

## Product datasheet for **RC214450**

### **BCLAF3 (NM\_198279) Human Tagged ORF Clone**

#### **Product data:**

Product Type:	Expression Plasmids
Product Name:	BCLAF3 (NM_198279) Human Tagged ORF Clone
Tag:	Myc-DDK
Symbol:	BCLAF3
Synonyms:	CXorf23
Mammalian Cell Selection:	Neomycin
Vector:	pCMV6-Entry (PS100001)
E. coli Selection:	Kanamycin (25 ug/mL)



[View online »](#)

ORF Nucleotide  
Sequence:

>RC214450 representing NM\_198279  
Red=Cloning site Blue=ORF Green=Tags(s)

TTTTGTAATACGACTCACTATAGGGCGGCCGGAATTCGTCGACTGGATCCGGTACCGAGGAGATCTGCC  
GCCCGCATCGCC

ATGGCACGGTCACGATCTAGATCCCCAGGTGGAACACAGGTCTTTATCACCAGTACCTAGAAATGCTG  
AACACTACAAGCAAAGACATTCACACGGGCATTATGGCTGTGAATATAGGAAGGATCCAAAAAGACCCGT  
CGCGTGGAGAATGGACAGTGAGAAACATGGACAGAGTAAACCAAGGATTCCTCTCGTGGAAATATATAT  
TACCAGTCTTATGAACATAGATCACCTTCCCCTAACATAAGAACTCTTTAGAAAATGTTTATATGTATA  
AGCCTCACAGAGGATATTCGCTGGAAGAGGGGACAGTAAACAGGAGAGCTCAGTATATGCCCAAATACTC  
AGAGGGTATACCTACAAAGAGCATGAAAGGAATTCCTATCCCCAGAAAGTGAAGGAGGGCATAGTCTT  
GATGCCACAGAGTTAGAGGAAGTGGAAAAGGAGGAAACCACTCAGAGGTCAATAGCAGATCTTTTAA  
GATTTGAAGGAAAGTGGCATGAAGATGAGTTGAGGCACCAGAGGATACAAGAAGAAAAATACTCCCAGTC  
AACTAGAAGAGGCTCTGAAGACTTTGAGACAAGGAGCTCATTTCAGAAGAGGTATCTGAGGATCGTGAT  
TTCAGAAAATATGGACACACATCAAAAAGACCTAAAGACGTGGAGAGGTATGAAAGCAGAGAGCCTGCCA  
GGAACCCAAAGTGAAGCCTGAGCATTCCCTCCCACCTTACCAAGAGGACACAGACCAGTGAACCTTGG  
GCCCAAACCTTATCGACATGCTGAGAGGGAACCCAGAGACCAGTTCAGCAACCAAAGTATCCTATGAC  
TATCGTCACAAACGTCCTAAGCTCTTGGATGGGGACCAGGACTTTTCTGATGGGAGAAGTCAAGTACT  
GTAAGGAAGAAGATAGAAAATATAGTTTTCAAAAAGGCCCTCTAAATAGAGAGTTAGATTGTTTTAATC  
TGGAAGAGGGAGAGACTCAAGATGGACAAGTCAAAGAACCTTTTAAACCGTCTAAGAAAGACAGCATT  
GCCTGTACTTATCAAAATAAAAATGATGTTGATTTGCGATCTAGTAATGACAAATGGAAGGAAAAATAA  
AGAAAGAAGGGGATTGTAGAAAAGAGCAATTCTTCCAGTAAACCACTTGATAAAAGTCAAAAACCTTCC  
TGATGTGAAACCCCTCGCCTATCAATCTTAGGAAGAAATCACTTACAGTTAAAGTAGATGTGAAGAAAACA  
GTAGATACATTCAGGGTTGCTTCTAGCTATTCCACAGAGAGACAGATGTCACATGATTTGGTTGCTGTTG  
GCAGGAAAAGTGAAGACTTTCATCCAGTGTGTAACATCTTGACTCAACTCAGAATACTGAAAACAAACC  
TACAGGAGAATTTGCTCAGGAAATCATAACAATAATCCATCAAGTTAAAGCAAATTTTTCCATCACCT  
GGCATTACTTTACATGAGCGTTTCTCAACAATGCAAGATATACACAAGGCAGATGTAATGAAATCCAT  
TGAATTCAGATCCAGAAATACACAGGAGAATAGATATGTCTTTGGCCGAGCTTCAGAGTAAACAAGCTGT  
GATCTATGAATCGGAACAGACTCTGATCAAAATAATAGATCCAAATGACCTACGACATGACATTGAAAGA  
AGGCGAAAAGAACGGTTACAGAATGAAGATGAGCACATTTTTTACATAGCTAGTGCTGCAGAGAGGGATG  
ATCAGAATTCAGTTTTTCAAAGAATTACTACGCAGAGAAAAGACATAATTACTCACAAACCATTTGA  
GGTTGAGGGAAAACCCGAAACACAAGGTAAGACCTTTTAAAGCAACTTTAGAGGTGGCAGATGCCAG  
CCCAATTATAATCAGGCCTGGTACAGAAGAGCTTGACATTCAGGCTAAGTATCAGCGTTTACGGTTCA  
CTGGCCCAAGGGGATTTTCACTCATAAGTTTACAGAAAAGATTAATGAGAAAAAAGAAAGGAATATACAGA  
TGTTGCCACAGGAATC

ACGCGTACGCGGCCGCTCGAGCAGAACTCATCTCAGAAGAGGATCTGGCAGCAAATGATATCCTGGATT  
ACAAGGATGACGACGATAAGGTTTAA

**Protein Sequence:** >RC214450 representing NM\_198279  
 Red=Cloning site Green=Tags(s)

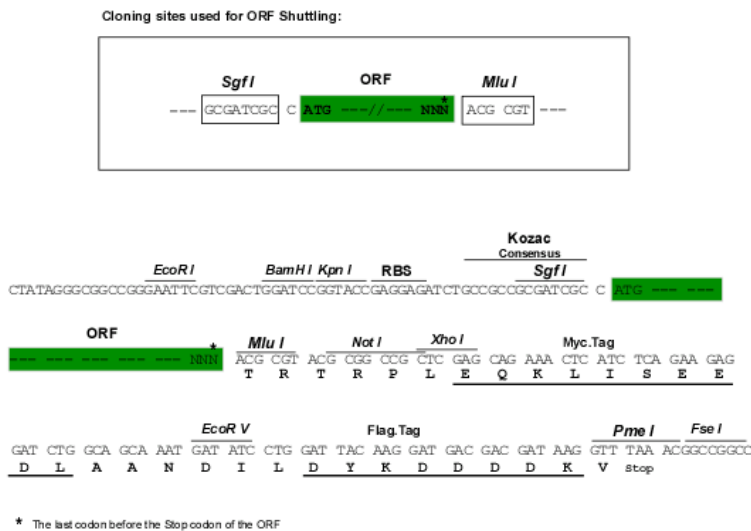
MARSRSRSPRWKHRSLSPVPRNAEHYKQRHSHGHYGCYRKPDPKRPVAWRMDSEKHGQSKPRIPSRGNIY  
 YQSYEHRSPSPNIRNSLENVYMYKPHRGYSPGRGDSNRAQYMPKYSEGIPYKEHERNSYPQKVQGGHSP  
 DDHRVRGSGKGGKPPQRSIADSFREFGKWHDELRLHQRIQEEKYSQSTRRGSEDFETRSSFQKRYPEDRD  
 FRKYGHTSKRPKDVRYESREPARNPWKPEHSLPPYQEDTDQWNLGPQTYRHAEREHPETSSATKVSYD  
 YRHKRPKLLDGDQDFSDGRTQKYCKEEDRKYSFQKGPLNRELD CFNTGRGRETQDGVKPEPKSKKDSI  
 ACTYSNKNDVLRSSNDKWKEKIKKEGDCRKESSSSNQLDKSQKLPDVKPPSPINLRKKSLTVKVDVKKT  
 VDTFRVASSYSTERQMSHDLVAVGRKSENFHPVFEHLDSTQNTENKPTGEFAQEIIITIIHQVKANYFPSP  
 GITLHERFSTMQDIHKADVNEIPLNSDPEIHRRIDMSLAELQSKQAVIYESEQTLIKIIDPNDLRHDIER  
 RRKERLQNEDEHIFHIAAAERDDQNSSFSKNYTTQRKDIITHKPFVEGHNHRNTRVRPFKSNFRGGRCQ  
 PNYKSLVQKSLYIQAQYQLRFTGPRGFI THKFRERLMRKKKEYTDVATGI

TRTRPLEQKLISEEDLAANDILDYKDDDDKV

**Chromatograms:** [https://cdn.origene.com/chromatograms/mk8030\\_h09.zip](https://cdn.origene.com/chromatograms/mk8030_h09.zip)

**Restriction Sites:** SgfI-MluI

**Cloning Scheme:**



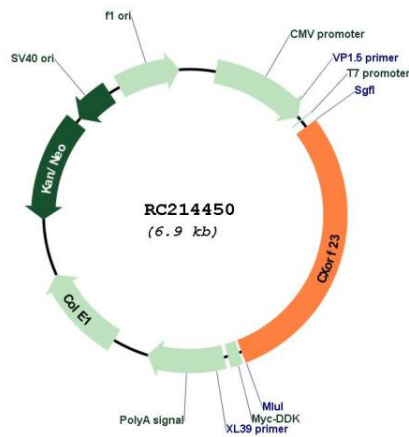
**ACCN:** NM\_198279

**ORF Size:** 2046 bp

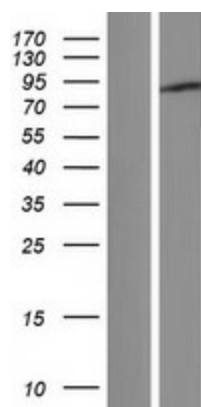
**OTI Disclaimer:** The molecular sequence of this clone aligns with the gene accession number as a point of reference only. However, individual transcript sequences of the same gene can differ through naturally occurring variations (e.g. polymorphisms), each with its own valid existence. This clone is substantially in agreement with the reference, but a complete review of all prevailing variants is recommended prior to use. [More info](#)

**OTI Annotation:** This clone was engineered to express the complete ORF with an expression tag. Expression varies depending on the nature of the gene.

<b>Components:</b>	The ORF clone is ion-exchange column purified and shipped in a 2D barcoded Matrix tube containing 10ug of transfection-ready, dried plasmid DNA (reconstitute with 100 ul of water).
<b>Reconstitution Method:</b>	<ol style="list-style-type: none"> <li>1. Centrifuge at 5,000xg for 5min.</li> <li>2. Carefully open the tube and add 100ul of sterile water to dissolve the DNA.</li> <li>3. Close the tube and incubate for 10 minutes at room temperature.</li> <li>4. Briefly vortex the tube and then do a quick spin (less than 5000xg) to concentrate the liquid at the bottom.</li> <li>5. Store the suspended plasmid at -20°C. The DNA is stable for at least one year from date of shipping when stored at -20°C.</li> </ol>
<b>RefSeq:</b>	<u><a href="#">NM_198279.3, NP_938020.2</a></u>
<b>RefSeq Size:</b>	3354 bp
<b>RefSeq ORF:</b>	2049 bp
<b>Locus ID:</b>	256643
<b>UniProt ID:</b>	<u><a href="#">A2AJT9</a></u>
<b>Cytogenetics:</b>	Xp22.12
<b>Protein Families:</b>	Druggable Genome
<b>MW:</b>	80.2 kDa

**Product images:**


Circular map for RC214450



Western blot validation of overexpression lysate (Cat# [LY405004]) using anti-DDK antibody (Cat# [TA50011-100]). Left: Cell lysates from untransfected HEK293T cells; Right: Cell lysates from HEK293T cells transfected with RC214450 using transfection reagent MegaTran 2.0 (Cat# [TT210002]).