

Product datasheet for **RC214444**

TMEM150A (NM_153342) Human Tagged ORF Clone

Product data:

Product Type:	Expression Plasmids
Product Name:	TMEM150A (NM_153342) Human Tagged ORF Clone
Tag:	Myc-DDK
Symbol:	TMEM150A
Synonyms:	TM6P1; TMEM150; TTN1
Mammalian Cell Selection:	Neomycin
Vector:	pCMV6-Entry (PS100001)
E. coli Selection:	Kanamycin (25 ug/mL)
ORF Nucleotide Sequence:	>RC214444 representing NM_153342 Red=Cloning site Blue=ORF Green=Tags(s)

TTTTGTAATACGACTCACTATAGGGCGGCCGGAATTCGTCGACTGGATCCGGTACCGAGGAGATCTGCC
GCC**CGATCGCC**

ATGTATGCCCTGTGGAGAACTGGTCTACAACGAGTCCTGCCCTCCTGACCCTGCTGAGCAAGGGGGTCC
CAAGACCTGCTGCACCCTGGACGATGTCCCCCTCATCAGTGGCCCTGATCTGCCTCCTGCGCTACGGGCA
GCTCCTGGAGCAGAGTCGGCACTCTTGGGTTAACACCACGGCACTCATCACAGGCTGCACCAACGCTGCC
GGCCTCTTGGTGGTTGGCACTTTAGGTGGATCATGCCAGGTCTCTGCACTACGTTGGAGCTGGCGTGG
CCTTCCCTGCGGGGCTGCTCTTTGTTTGCCTGCACTGTGCTCTCTCTACCAAGGGGCCACCGCCCGCT
GGACCTGGCTGTGGCCTATCTGCGAAGTGTGCTGGCTGTGCATCGCCTTTATCACCCCTGGTCTCAGTGGA
GTCTTCTTTGTCCATGAGAGTTCTCAGCTGCAACATGGGGCAGCCCTGTGTGAGTGGGTGTGTGTCATCG
ATATCCCATTTTCTATGGCACCTTCAGCTACGAGTTTGGGGCAGTCTCCTCAGACACACTGGTGGCTGC
ACTGCAGCCTACCCCTGGCCGGCCTGCAAGTCTCCGGGAGCAGCAGCACCTCCACCCACCTCAACTGT
GCCCCGAGAGCATCGCTATGATC

ACGCGTACGCGGGCCGCTCGAGCAGAACTCATCTCAGAAGAGGATCTGGCAGCAAATGATATCCTGGATT
ACAAGGATGACGACGATAAGGTTTAA



[View online »](#)

Protein Sequence: >RC214444 representing NM_153342
Red=Cloning site Green=Tags(s)

MYALWRTGPTTSPALLTLLSKGVPRPAAPWTMSPSSVALICLLRYGQLLEQSRHSWVNTTALITGCTNAA
 GLLVVGNFQVDHARSLHYVGAGVAFAPAGLLFVCLHCALSYQGATAPL DLAVAYLRSVLAVIAFITLVL SG
 VFFVHESSQLQHGAALCEWVCVIDIPIFYGTF SYEFGAVSSDTLVAALQPTPGRACKSSGSSSTSTHLNC
 APESIAM I

TRTRPLEQKLISEEDLAANDILDYKDDDDKV

Chromatograms: https://cdn.origene.com/chromatograms/ja1440_h04.zip

Restriction Sites: SgfI-MluI

Cloning Scheme:

Cloning sites used for ORF Shuttling:



* The last codon before the Stop codon of the ORF

ACCN: NM_153342

ORF Size: 654 bp

OTI Disclaimer: The molecular sequence of this clone aligns with the gene accession number as a point of reference only. However, individual transcript sequences of the same gene can differ through naturally occurring variations (e.g. polymorphisms), each with its own valid existence. This clone is substantially in agreement with the reference, but a complete review of all prevailing variants is recommended prior to use. [More info](#)

OTI Annotation: This clone was engineered to express the complete ORF with an expression tag. Expression varies depending on the nature of the gene.

Components: The ORF clone is ion-exchange column purified and shipped in a 2D barcoded Matrix tube containing 10ug of transfection-ready, dried plasmid DNA (reconstitute with 100 ul of water).

Reconstitution Method:

1. Centrifuge at 5,000xg for 5min.
2. Carefully open the tube and add 100ul of sterile water to dissolve the DNA.
3. Close the tube and incubate for 10 minutes at room temperature.
4. Briefly vortex the tube and then do a quick spin (less than 5000xg) to concentrate the liquid at the bottom.
5. Store the suspended plasmid at -20°C. The DNA is stable for at least one year from date of shipping when stored at -20°C.

RefSeq: [NM_153342.2](#)

RefSeq Size: 1486 bp

RefSeq ORF: 657 bp

Locus ID: 129303

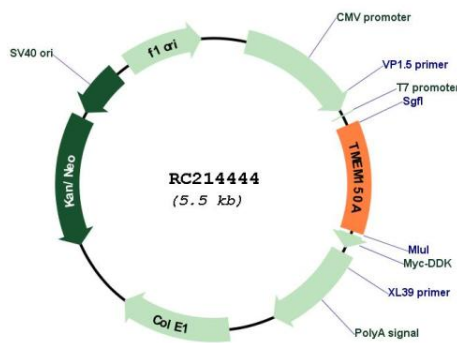
Cytogenetics: 2p11.2

Protein Families: Transmembrane

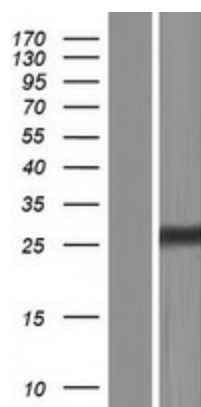
MW: 23.5 kDa

Gene Summary: Regulates localization of phosphatidylinositol 4-kinase (PI4K) to the plasma membrane, possibly by reducing the association of TTC7 (TTC7A or TTC7B) with the PI4K complex (PubMed:25608530). Acts as a regulator of phosphatidylinositol 4-phosphate (PtdIns(4)P) synthesis (PubMed:25608530). May also play a role in fasting-induced catabolism (By similarity).[UniProtKB/Swiss-Prot Function]

Product images:



Circular map for RC214444



Western blot validation of overexpression lysate (Cat# [LY407060]) using anti-DDK antibody (Cat# [TA50011-100]). Left: Cell lysates from untransfected HEK293T cells; Right: Cell lysates from HEK293T cells transfected with RC214444 using transfection reagent MegaTran 2.0 (Cat# [TT210002]).