

## Product datasheet for RC214437

### PRY (PRY2) (NM\_001002758) Human Tagged ORF Clone

#### Product data:

**Product Type:** Expression Plasmids  
**Product Name:** PRY (PRY2) (NM\_001002758) Human Tagged ORF Clone  
**Tag:** Myc-DDK  
**Symbol:** PRY  
**Synonyms:** PTPN13LY2  
**Mammalian Cell Selection:** Neomycin  
**Vector:** pCMV6-Entry (PS100001)  
**E. coli Selection:** Kanamycin (25 ug/mL)  
**ORF Nucleotide Sequence:** >RC214437 ORF sequence  
 Red=Cloning site Blue=ORF Green=Tags(s)

TTTTGTAATACGACTCACTATAGGGCGGCCGGAATTCGTCGACTGGATCCGGTACCGAGGAGATCTGCC  
 GCC**CGATCGCC**

ATGGGAGCCACTGGGCTTGGCTTCTACTTTCCTGGAGACAAGACAATTTGAATGGCACTGACTGCCAGG  
 GATGCAATATTTTACTTCTCTGAGACTACGGGGAGCATGTGTTCTGAACCTTTCCTTGAACAGAGGTCT  
 TGAGGCCAGAAGGAAGGATCTTAAAGACTCATTTCTCTGGAGATATGGGAAGTTGGCTGTATCTCA  
 CTTCCACTTCGTGAGATGACCGCTGGATTAACCCACCCAAATTCAGAGATTTTCCAAGGCTACCACC  
 AGAGGGTGCACGGAGCTGATGCACTGAGCCTGCAAACCAACTCTCTGAGAAGCAGGTTATCTTCACAGTG  
 CCTCGGACAGAGCTTCTTCTCAGGACACTCGAGAGAGGCCGTGGTTTCAGGGCACTTGGGACATCTGT  
 GGCCACGTTTCATGAAGAAGAC

**ACGCGT**ACGCGGCCGCTCGAGCAGAACTCATCTCAGAAGAGGATCTGGCAGCAAATGATATCCTGGATT  
 ACAAGGATGACGACGATAAGGTTTAA

**Protein Sequence:** >RC214437 protein sequence  
 Red=Cloning site Green=Tags(s)

MGATGLGFLLSWRQDNLNGTDCQGCNILYFSETTGSMCSELSLNRGLEARRKKDLKDSFLWRYGKVGCS  
 LPLREMTAWINPPQISEIFQGYHQRVHGADALSLQTNSLRSRLSSQCLGQSFLRLTLERGRFRALGDIC  
 GHVHEED

**TR**TRPLEQKLISEEDLAANDILDYKDDDDKV

**Chromatograms:** [https://cdn.origene.com/chromatograms/mk6461\\_c08.zip](https://cdn.origene.com/chromatograms/mk6461_c08.zip)



[View online »](#)

Restriction Sites: SgfI-MluI

Cloning Scheme:



ACCN: NM\_001002758

ORF Size: 441 bp

OTI Disclaimer: The molecular sequence of this clone aligns with the gene accession number as a point of reference only. However, individual transcript sequences of the same gene can differ through naturally occurring variations (e.g. polymorphisms), each with its own valid existence. This clone is substantially in agreement with the reference, but a complete review of all prevailing variants is recommended prior to use. [More info](#)

OTI Annotation: This clone was engineered to express the complete ORF with an expression tag. Expression varies depending on the nature of the gene.

Components: The ORF clone is ion-exchange column purified and shipped in a 2D barcoded Matrix tube containing 10ug of transfection-ready, dried plasmid DNA (reconstitute with 100 ul of water).

Reconstitution Method:

1. Centrifuge at 5,000xg for 5min.
2. Carefully open the tube and add 100ul of sterile water to dissolve the DNA.
3. Close the tube and incubate for 10 minutes at room temperature.
4. Briefly vortex the tube and then do a quick spin (less than 5000xg) to concentrate the liquid at the bottom.
5. Store the suspended plasmid at -20°C. The DNA is stable for at least one year from date of shipping when stored at -20°C.

RefSeq: [NM\\_001002758.1](#), [NP\\_001002758.1](#)

RefSeq Size: 1238 bp

RefSeq ORF: 444 bp

Locus ID: 442862

UniProt ID: [O14603](#)

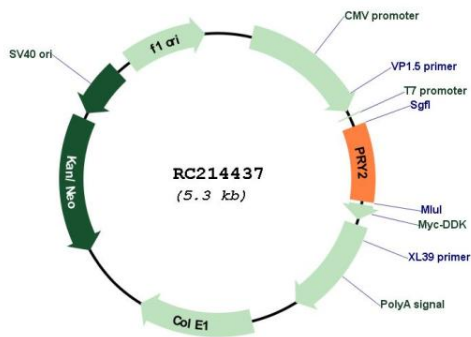
Cytogenetics: Yq11.223

Protein Families: Phosphatase

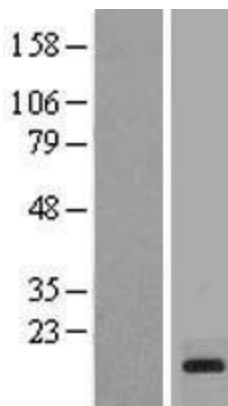
MW: 16.5 kDa

**Gene Summary:** This gene is located in the nonrecombining portion of the Y chromosome, and expressed specifically in testis. It encodes a protein which has a low degree of similarity to protein tyrosine phosphatase, non-receptor type 13. Two nearly identical copies of this gene exist within a palindromic region. This record represents the more centromeric copy. [provided by RefSeq, Jul 2008]

**Product images:**



Circular map for RC214437



Western blot validation of overexpression lysate (Cat# [LY424151]) using anti-DDK antibody (Cat# [TA50011-100]). Left: Cell lysates from untransfected HEK293T cells; Right: Cell lysates from HEK293T cells transfected with RC214437 using transfection reagent MegaTran 2.0 (Cat# [TT210002]).