

## Product datasheet for RC214436

### SLAP2 (SLA2) (NM\_175077) Human Tagged ORF Clone

#### Product data:

**Product Type:** Expression Plasmids  
**Product Name:** SLAP2 (SLA2) (NM\_175077) Human Tagged ORF Clone  
**Tag:** Myc-DDK  
**Symbol:** SLAP2  
**Synonyms:** C20orf156; MARS; SLAP-2; SLAP2  
**Mammalian Cell Selection:** Neomycin  
**Vector:** pCMV6-Entry (PS100001)  
**E. coli Selection:** Kanamycin (25 ug/mL)  
**ORF Nucleotide Sequence:** >RC214436 representing NM\_175077  
 Red=Cloning site Blue=ORF Green=Tags(s)

TTTTGTAATACGACTCACTATAGGGCGGCCGGAATTCGTCGACTGGATCCGGTACCGAGGAGATCTGCC  
 GCCCGCATCGCC

ATGGGAAGTCTGCCAGCAGAAGAAAATCTCTGCCAAGCCCAAGCTTGAGTTCTCTGTCCAAGGCCAGG  
 GACCTGTGACCATGGAAGCAGAGAGAAGCAAGGCCACAGCCGTGGCCCTGGGCAGTTTCCCGGCAGGTGG  
 CCCGGCCGAGCTGTCGCTGAGACTCGGGGAGCCATTGACCATCGTCTCTGAGGATGGAGACTGGTGGACG  
 GTGCTGTCTGAAGTCTCAGGCAGAGAGTATAACATCCCCAGCGTCCACGTGGCCAAAGTCTCCCATGGT  
 GGCTGTATGAGGGCCTGAGCAGGGAGAAAGCAGAGGAAGTCTGTGTTACCTGGGAACCTGGAGGGGC  
 TTCTCTCATCCGGGAGAGCCAGACCAGGAGAGGCTCTTACTCTCTGTGAGTCCGCTCAGCCGCCCTGCA  
 TCTGGGACCGGATCAGACACTACAGGATCCACTGCCTTGACAATGGCTGGCTGTACATCTACCCGCC  
 TCACCTTCCCCTCACTCCAGGCCCTGGTGGACCATTACTCTGAGGGCTGGCCCGCTCCCTGGCAAGGATA  
 TACCCCTACCTGTGACTGTGCAGAGGACACCCTCAACTGGAAAGAGCTGGACAGCTCCCTCCTGTTTTTC

ACGCGTACGCGGCCGCTCGAGCAGAACTCATCTCAGAAGAGGATCTGGCAGCAATGATATCCTGGATT  
 ACAAGGATGACGACGATAAGGTTTAA

**Protein Sequence:** >RC214436 representing NM\_175077  
 Red=Cloning site Green=Tags(s)

MGSLPSRRKSLPSPSLSSSVQGGPVTMEAERSKATAVALGSFPAGGPAELSLRLGEPLTIVSEDGDWWT  
 VLSEVSGREYNIPSVHVAKVSHGWLIEGLSREKAEELLLPGNPGGAFLIRESQTRRGSYLSVRLSRPA  
 SWDIRIRHYRIHCLDNGWLYISPRLTFPSLQALVDHYSEGWPAPWQGYTPTCDCAEDTTQLERAGQLPPVF

TRTRPLEQKLISEEDLAANDILDYKDDDDKV



[View online »](#)

**Chromatograms:** [https://cdn.origene.com/chromatograms/mk6496\\_d08.zip](https://cdn.origene.com/chromatograms/mk6496_d08.zip)

**Restriction Sites:** SgfI-MluI

**Cloning Scheme:**



**ACCN:** NM\_175077

**ORF Size:** 630 bp

**OTI Disclaimer:** The molecular sequence of this clone aligns with the gene accession number as a point of reference only. However, individual transcript sequences of the same gene can differ through naturally occurring variations (e.g. polymorphisms), each with its own valid existence. This clone is substantially in agreement with the reference, but a complete review of all prevailing variants is recommended prior to use. [More info](#)

**OTI Annotation:** This clone was engineered to express the complete ORF with an expression tag. Expression varies depending on the nature of the gene.

**Components:** The ORF clone is ion-exchange column purified and shipped in a 2D barcoded Matrix tube containing 10ug of transfection-ready, dried plasmid DNA (reconstitute with 100 ul of water).

**Reconstitution Method:**

1. Centrifuge at 5,000xg for 5min.
2. Carefully open the tube and add 100ul of sterile water to dissolve the DNA.
3. Close the tube and incubate for 10 minutes at room temperature.
4. Briefly vortex the tube and then do a quick spin (less than 5000xg) to concentrate the liquid at the bottom.
5. Store the suspended plasmid at -20°C. The DNA is stable for at least one year from date of shipping when stored at -20°C.

**RefSeq:** [NM\\_175077.3](#)

**RefSeq Size:** 2447 bp

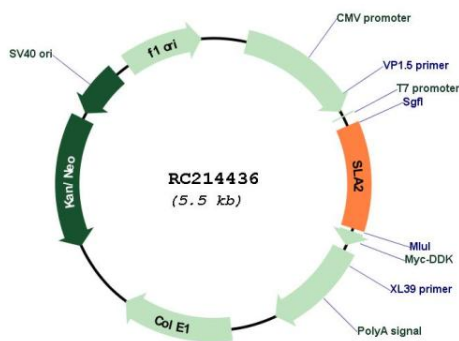
**RefSeq ORF:** 633 bp

**Locus ID:** 84174

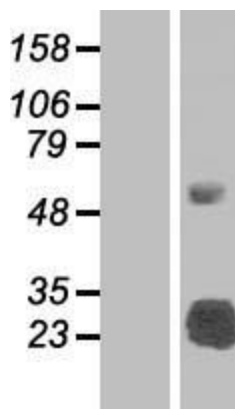
**UniProt ID:** [Q9H6Q3](#)  
**Cytogenetics:** 20q11.23  
**Protein Families:** Druggable Genome, Transcription Factors  
**MW:** 22.9 kDa

**Gene Summary:** This gene encodes a member of the SLAP family of adapter proteins. The encoded protein may play an important receptor-proximal role in downregulating T and B cell-mediated responses and inhibits antigen receptor-induced calcium mobilization. This protein interacts with Cas-Br-M (murine) ecotropic retroviral transforming sequence c. Two transcript variants encoding distinct isoforms have been identified for this gene. [provided by RefSeq, Jul 2008]

### Product images:



Circular map for RC214436



Western blot validation of overexpression lysate (Cat# [LY406314]) using anti-DDK antibody (Cat# [TA50011-100]). Left: Cell lysates from untransfected HEK293T cells; Right: Cell lysates from HEK293T cells transfected with RC214436 using transfection reagent MegaTran 2.0 (Cat# [TT210002]).