

Product datasheet for **RC214434**

PHOSPHO1 (NM_178500) Human Tagged ORF Clone

Product data:

Product Type:	Expression Plasmids
Product Name:	PHOSPHO1 (NM_178500) Human Tagged ORF Clone
Tag:	Myc-DDK
Symbol:	PHOSPHO1
Mammalian Cell Selection:	Neomycin
Vector:	pCMV6-Entry (PS100001)
E. coli Selection:	Kanamycin (25 ug/mL)
ORF Nucleotide Sequence:	>RC214434 ORF sequence Red=Cloning site Blue=ORF Green=Tags(s)

TTTTGTAATACGACTCACTATAGGGCGGCCGGAATTCGTCGACTGGATCCGGTACCGAGGAGATCTGCC
GCC**CGATCGCC**

ATGAGTGGCTGTTTTCCAGTTTCTGGCCTCCGCTGCCTATCTAGGGACGGCAGGATGGCCGCGCAGGGCG
CGCCGCGCTTCTCCTGACCTTCGACTTCGACGAGACTATCGTGGACGAAAACAGCGACGATTCGATCGT
GCGCGCCGCGCCGGGCCAGCGGCTCCCGGAGAGCCTGCGAGCCACCTACCGCGAGGGCTTCTACAACGAG
TACATGCAGCGCGTCTTCAAGTACCTGGGCGAGCAGGGCGTGGCGCCGCGGGACCTGAGCGCCATCTACG
AAGCCATCCCTTTGTGCGCCAGGCATGAGCGACCTGCTGCAGTTTGTGGCAAACAGGGCGCCTGCTTCGA
GGTGATTCTCATCTCCGATGCCAACACCTTTGGCGTGGAGAGCTCGCTGCGCGCCGCGGCCACACAGC
CTGTTCCGCCGATCCTCAGCAACCCGTCGGGGCCGGATGCGCGGGACTGCTGGCTCTGCGGCCGTTCC
ACACACACAGCTGCGCGCGCTGCCCGCCAACATGTGCAAGCACAAAGGTGCTCAGCGACTACCTGCGCGA
GCGGGCCACGACGGCGTCACTTCGAGCGCCTTCTACGTGGGCGACGGCGCCAACGACTTCTGCCCC
ATGGGGCTGCTGGCGGGCGGCGAGCTGGCCTTCCCGCGCCGCGGTACCCATGCACCGCCTCATTGAG
AGGCCAGAAGGCCGAGCCAGCTCGTCCGCGCCAGCGTGGTCCCTGGGAAACGGCTGCAGATGTGCG
CCTCCACCTGCAACAGGTGCTGAAGTCGTGC

ACGCGTACGCGGCCGCTCGAGCAGAAACTCATCTCAGAAGAGGATCTGGCAGCAAATGATATCCTGGATT
ACAAGGATGACGACGATAAGGTTTAA



[View online »](#)

Protein Sequence: >RC214434 protein sequence
Red=Cloning site Green=Tags(s)

MSGCFVSVGLRCLSRDGRMAAQGAPRFLLTFFDFDETIVDENSDDSIIVRAAPGQRLPESLRATYREGFYNE
 YMQRVFKYLGEQGVPRDL SAIYEAIPLSPGMSDLLQFVAKQGACFEVILISDANTFGVSSLRAAGHHS
 LFRRILSNPSGPDARGLLALRPFHTHSCARCPANMCKHKVLSDYLRERAHGCVHFERLFYVGDGANDFCP
 MGLLAGGDVAFPRRGYPMHRLIQEAQKAEPSSFRASVVPWETAADVRLHLQQVLKSC

TRTRPLEQKLISEEDLAANDILDYKDDDDKV

Chromatograms: https://cdn.origene.com/chromatograms/mk6463_a03.zip

Restriction Sites: SgfI-MluI

Cloning Scheme:



ACCN: NM_178500

ORF Size: 801 bp

OTI Disclaimer: The molecular sequence of this clone aligns with the gene accession number as a point of reference only. However, individual transcript sequences of the same gene can differ through naturally occurring variations (e.g. polymorphisms), each with its own valid existence. This clone is substantially in agreement with the reference, but a complete review of all prevailing variants is recommended prior to use. [More info](#)

OTI Annotation: This clone was engineered to express the complete ORF with an expression tag. Expression varies depending on the nature of the gene.

Components: The ORF clone is ion-exchange column purified and shipped in a 2D barcoded Matrix tube containing 10ug of transfection-ready, dried plasmid DNA (reconstitute with 100 ul of water).

Reconstitution Method:

1. Centrifuge at 5,000xg for 5min.
2. Carefully open the tube and add 100ul of sterile water to dissolve the DNA.
3. Close the tube and incubate for 10 minutes at room temperature.
4. Briefly vortex the tube and then do a quick spin (less than 5000xg) to concentrate the liquid at the bottom.
5. Store the suspended plasmid at -20°C. The DNA is stable for at least one year from date of shipping when stored at -20°C.

RefSeq: [NM_178500.4](#)

RefSeq Size: 2046 bp

RefSeq ORF: 804 bp

Locus ID: 162466

UniProt ID: [Q8TCT1](#)

Cytogenetics: 17q21.32

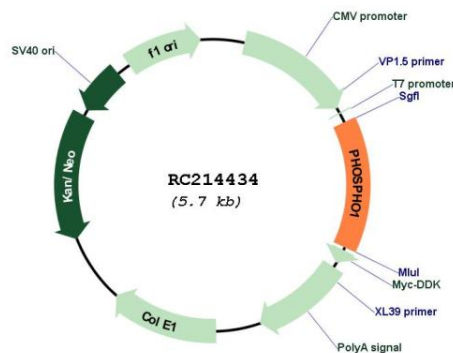
Protein Families: Druggable Genome

Protein Pathways: Glycerophospholipid metabolism

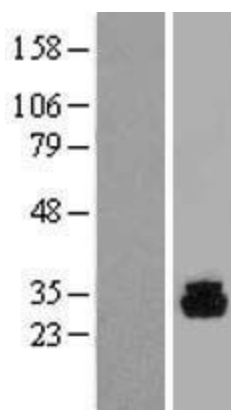
MW: 29.7 kDa

Gene Summary: Phosphatase that has a high activity toward phosphoethanolamine (PEA) and phosphocholine (PCho). Involved in the generation of inorganic phosphate for bone mineralization. [UniProtKB/Swiss-Prot Function]

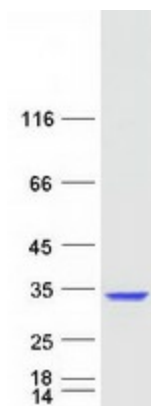
Product images:



Circular map for RC214434



Western blot validation of overexpression lysate (Cat# [LY405893]) using anti-DDK antibody (Cat# [TA50011-100]). Left: Cell lysates from untransfected HEK293T cells; Right: Cell lysates from HEK293T cells transfected with RC214434 using transfection reagent MegaTran 2.0 (Cat# [TT210002]).



Coomassie blue staining of purified PHOSPHO1 protein (Cat# [TP314434]). The protein was produced from HEK293T cells transfected with PHOSPHO1 cDNA clone (Cat# RC214434) using MegaTran 2.0 (Cat# [TT210002]).