

Product datasheet for RC214433

GPR158 (NM_020752) Human Tagged ORF Clone

Product data:

Product Type:	Expression Plasmids
Product Name:	GPR158 (NM_020752) Human Tagged ORF Clone
Tag:	Myc-DDK
Symbol:	GPR158
Mammalian Cell Selection:	Neomycin
Vector:	pCMV6-Entry (PS100001)
E. coli Selection:	Kanamycin (25 ug/mL)
ORF Nucleotide Sequence:	>RC214433 representing NM_020752 Red=Cloning site Blue=ORF Green=Tags(s)

TTTTGTAATACGACTCACTATAGGGCGGCCGGAATTCGTCGACTGGATCCGGTACCGAGGAGATCTGCC
GCC**CGATCGCC**

ATGGGAGCCATGGCTTACCCCTTACTCCTCTGCCTCCTGCTTGTCTCAGCTGGGATTGGGAGCTGTTGGCG
CCAGCCGCGACCCCAAGGACGGCCGGATCCCCTCGAGAGAGGACCCGAAGGGGAAGCCGCACGCCCA
GCAGCCGGGTCGAGCCTCTGCCTCGGACTCCTCGGCTCCCTGGAGCCGCTCCACCGATGGACCATCTTG
GCGCAGAACTCGCCGAGGAGGTGCCATGGACGTGGCCTTTACCTCTACACCGGGGACTCCCACCAGC
TGAAGCGAGCCAAGTCTCCGGCCGCTACGAGTTGGCGGGCTGCCGGGAAGTGGCCAGCCCTGGCCAG
CGCGCACCCCTCCTTGCACCGGGCGCTGGACACTGACACACGCGCACTCACTCAACGTGATGCTG
CAGAGCAATAAGTCGCGGAGCAGAATTGACAGGACGACCTGGATTGGTACCAGGCGCTGGTGTGGAGCC
TTCTGGAGGGCGAGCCAGCATCTCCCGGGCGCCATCACCTTACGACCGATTGCTGTCCGACCCGGC
CCCACAGGTCTTCTCCAGGCCACGCGGAGGAGAGCCGCATCTGCTCCAAGACCTGCTCCTCCGCA
CCCCACTGGCCAACGCCACTCTGGAGACCGAGTGGTTCCACGGCTCCGGCGCAAGTGGAGGCCCACT
TACACCGCCGCGCCCAATCAGGGGCCCGGGCTGGCCACAGCTGGCGGCGCAAGGACGGGCTCGG
CGGGACAAGAGCCACTCAAGTGTCTCCGCTTATCTGGAGTGCAGAACGGGAGTTACAAGCCCGG
TGGCTGGTACTCTTCTCTGCCATCTACGGTTGCAGCCTAACCTGGTCCCGAATTCAGGGGTGTCA
TGAAAGTTGACATAAATCTCAGAAAGTGGACATTGACCAATGCTCAAGTATGATGGCTGGTTTTAGGAAC
TCATAAATGCCACCTCAACAATTCAGAGTGTATGCCAATTAAGGCCCTAGGATTCGTTCTTGGAGCCTAT
GAGTGCATTTGCAAAGCAGGATTCTATCATCTGGAGTCTTACCAGTGAACAACCTTTCGGAGAAGGGGTC
CGGATCAGCATATTTAGGAAGTACAAAAGATGTGTCAGAAGAAGCCTATGTCTGCCTACCTTGCAGGGA
GGGCTGCCCTTCTGTGCTGATGACAGCCATGCTTCGTCAGGAAGATAAGTATTTACGACTTGCATC
ATCTCCTTCCAAGCCCTGTGATGCTGCTGACTTCGTTAGCATGCTGGTGGTCTACCACCTTTCGAAAG
CAAAGAGCATCCGGGCATCGGGCCTTATCTGTTGAAACGATCCTTTTTGGATCTCTGCCTATACTT
TCCAGTTGTTATTTGACTTTGAGCCAAGCACATTTGCTGTATTCTCCTAAGATGGGCTCGCTTCTC
GGTTTTGCTACTGTTTACGGAAGTGTCACTCTCAAACCTTACAGGTTTTGAAAGTGTCTTTCACGAA
CGGCTCAACGAATTCATATATGACTGGCGGACGGGTCATGAGGATGCTGGCAGTAATACTCTTGGTAGT



View online »

GTTTTGGTTTCTCATTGGCTGGACTTCATCTGTGTGCCAGAATTTGGAGAAACAGATTTCACTTATTGGC
CAGGGGAAAACATCCGATCACCTCATCTTCAATATGTGCCTCATTGACCGCTGGGACTACATGACAGCAG
TTGCTGAATTTTTATTCTCTTGTGGGGTGTATCTCTGCTATGCAGTGCAGCAGTCCCATCGGCATT
CCATGAGCCCCGTATATGGCTGTTGCAGTTACAATGAGCTCATCATCTCTGCTATATCCATAACAATT
AGATTTGTTCTTGCCTCAAGACTTCAGTCTGATTGGATGTTGATGCTGTATTTTGACATACTCATTTGA
CTGTGACAGTACCATTGGGTTGCTTTTGATTCCAAAGTTTTACATTCAAGCAATAACCCACGAGATGA
TATTGCTACAGAAGCATATGAGGATGAGCTAGACATGGGCCGATCTGGATCCTACCTGAACAGCAGTATC
AATTCAGCCTGGAGTGAGCACAGCTTGGATCCAGAGGACATTCGGGACGAGCTGAAAAAACTCTATGCC
AACTGGAATATATAAAAGAAAGAGATGATCACAACAACCCCCACCTCCAGAAAAAGCGGTGCTCGAA
GAAGGGCTAGGTCGTTCCATCATGAGACGCATTACGGAGATCCCAGAGACAGTCAAGCCGAGTCTCT
AAAGAGGACAAGGAGGGCGCCGACCATGGCACAGCCAAAGGCACTGCCCTCATCAGGAAGAACCCCCAG
AGTCTTCAGGGAACACAGGAAAATCCAAGGAGGAGCCCTGAAAAACCGAGTCTTCTCACTCAAGAAATC
CCACAGCACTTATGACCACGTGAGAGACCAACGGAAGAGTCCAGTAGCCTACCCACAGAAAGCCAAGAG
GAGGAGACAACAGAAAATCCACACTGGAATCCCTGTCCGGTAAAAAACTAACACAAAACTAAAAGAAG
ACAGCGAGGCTGAGTCCACGGAGTCCGTGCCGTTGGTGTGCAAGTCAAGCAAGCGCTCACAACTCAGCTC
AGAGAAGAAAACCTGGGCACCCACGAACATCGATGTTACAGAAGTCTCTCAGTGTATAGCAAGCGCCAAG
GAGAAGACTCTTGGATTAGCTGGGAAAACCCAAACAGCAGGTGTGGAAGAACGCACTAAATCCCAGAAAAC
CTTTGCCAAAAGATAAAGAGACAAAACAGAAATCACTCAAATTTCTGATAACACAGAGACTAAAGATCCTGC
CCCCAAAACCTCAAATCCTGCGGAGGAGCCAAGAAAGCCTCAGAAATCTGGGATTATGAAACAACAAGG
GTCAACCCCACTGCCAATTTGACCTGAACCCAGGCACCACCCAGATGAAGGACAACCTTTGACATTG
GGGAGGTGTGCTTGGGAGTTTATGACCTGACCCCTGGTCTGTGCCTCAGAATCAAAGTTCAAAA
GCACGTATCTATTGTGGCTTCTGAAATGGAGAAAAACCCACTTTTTCTTAAAGGAGAAATCTCACCAC
AAGCCTAAGGCAGCTGAGGTTTGTGAGCAATCCAATCAGAAGCGCATAGATAAGGCTGAAGTATGCCTTT
GGGAGAGCCAAGGCCAGTCCATTTTGAAGATGAGAAGCTTTTGATTTCCAAGACTCCAGTCTCCAGAG
GAGGGCAAAGAGGAGAACGGAGGTGAGCCTCGTGCAGCCAATGTGTGCTGGGACAGCGAAGAACTG
CCCCCAAAGCTGTAGCATCAAAAACAGAGAATGAAAATCTCAACCAAATAGGACACCAGGAAAAAAGA
CATCTTCTTCTGAGGAGAATGTGCGTGGCTCCTATAACTCAAGTAATAACTTCCAGCAACCTTTAACATC
ACGAGCAGAGGTTTGTCTTGGGAGTTTGTGACCCAGCTCAACCAAATGCTGGAAGAAGTGTAGCTTTA
CCTGCCTCTTCTGCTCTAAGTCAAATAAGATAGCAGGGCCTAGGAAAGAAGAGATCTGGGATAGTTTTA
AAGTG

ACGCGTACGCGGCCGCTCGAGCAGAAACTCATCTCAGAAGAGGATCTGGCAGCAAATGATATCCTGGATT
ACAAGGATGACGACGATAAGGTTTAA

Protein Sequence: >RC214433 representing NM_020752
 Red=Cloning site Green=Tags(s)

```

MGAMAYPLLLCLLLAQLGLGAVGASRDPQGRPDSPRERTPKGKPHAQQPGRASASDSSAPWSRSTDGTIL
AQKLAEEVPMDEVASYLYTGDShQLKRANCSGRYELAGLPGKWPALASAHPSLHRALDTLTHATNFLNVML
QSNKSREQNLQDDLWDYQALVWSLLEGEPSISRAAITFSTDSLAPAPQVFLQATREESRILLQDLSSSA
PHLANATLETEWFHGLRRKWRPHLHRRGPNQGRGLGHSWRRKDGGLGGDKSHFKWSPPLYECENGYSYKPG
WLVTLSSAIYGLQPNLVPEFRGMKVDINLQKVDIDQCSSDGFSGTHKCHLNSECMPKGLGFVLGAY
ECICKAGFYHPGVLVNNFRRRQPDQHISGSTKDVSEEAYVCLPCREGCPFCADDSPCFVQEDKYLRRLAI
ISFQALCMLLDFVSMVVYHFRKAKSIRASGLILLELILFGLSLLLYFPVVILYFEPSTFCILLRWARLL
GFATVYGTVTLLKLRVVKVFLSRTAQRIPYMTGGRVMMRLAVILLVFWFLIGWTSSVCNLEKQISLIG
QGKTSDDLIFNMCLIDRWDMYTAFAEFLFLLWGVYLCYAVRTVPSAFHEPRYMAVAVHNELIISAIFHTI
RFVLASRLQSDWMLMLYFAHTLTVTVTIGLLLIPKFSHSSNNPRDDIATEAYEDELDMGRSGSYLNSSI
NSAWSEHSLDPEDIRDELKLYAQLEIYKRKKMITNPHLQKKRCSKKGGRSIRRRITEIPETVSRQCS
KEDKEGADHGTAKGTALIRKNPPESSGNTGKSKEETLKNRVFLSKKSHSTYDHRDQTEESSLPTESSQE
EETTENSTLESLSGKKLQKLKEDSEAESTESVPLVCKSASAHLNLSSEKKTGHPRTSMLQKSLSVIASAK
EKTLGLAGKTQTAGVEERTKSQKPLPKDKETNRNHSNSDNTETKDPAPQNSNPAEEPRKPKQSGIMKQQR
VNPTTANSDLNPGTTQMKDNFDIGEVCPWEVYDLTPGPVPSSESKVQKHVSIVASEMEKNPTFSLKEKSHH
KPKAAEVCQQSNQKRIDKAEVCLWESQGSILEDEKLLISKTPVLPERAKEENGGQPRAANVCAGQSEEL
PPKAVASKTENENLNQIGHQEKTSSEENVRGSYNSSNNFQQPLTSRAEVCPEFETPAQPNAGRVAL
PASSALSANKIAGPRKEEIWDSFKV
    
```

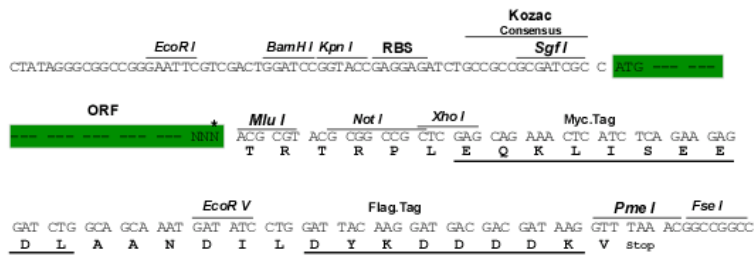
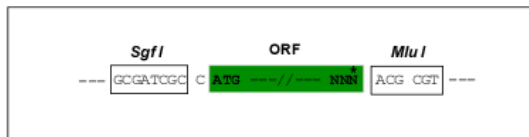
TRTRPLEQKLISEEDLAANDILDYKDDDDKV

Chromatograms: https://cdn.origene.com/chromatograms/mk8010_d06.zip

Restriction Sites: SgfI-MluI

Cloning Scheme:

Cloning sites used for ORF Shuttling:



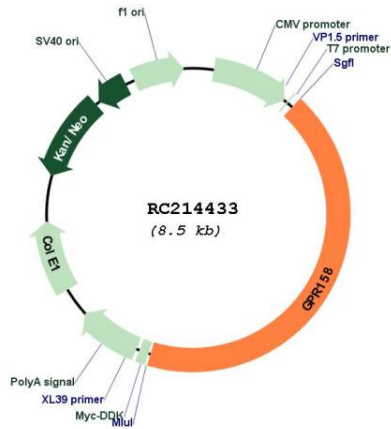
* The last codon before the Stop codon of the ORF

ACCN: NM_020752

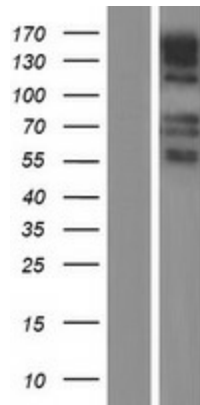
ORF Size: 3645 bp

OTI Disclaimer:	The molecular sequence of this clone aligns with the gene accession number as a point of reference only. However, individual transcript sequences of the same gene can differ through naturally occurring variations (e.g. polymorphisms), each with its own valid existence. This clone is substantially in agreement with the reference, but a complete review of all prevailing variants is recommended prior to use. More info
OTI Annotation:	This clone was engineered to express the complete ORF with an expression tag. Expression varies depending on the nature of the gene.
Components:	The ORF clone is ion-exchange column purified and shipped in a 2D barcoded Matrix tube containing 10ug of transfection-ready, dried plasmid DNA (reconstitute with 100 ul of water).
Reconstitution Method:	<ol style="list-style-type: none">1. Centrifuge at 5,000xg for 5min.2. Carefully open the tube and add 100ul of sterile water to dissolve the DNA.3. Close the tube and incubate for 10 minutes at room temperature.4. Briefly vortex the tube and then do a quick spin (less than 5000xg) to concentrate the liquid at the bottom.5. Store the suspended plasmid at -20°C. The DNA is stable for at least one year from date of shipping when stored at -20°C.
RefSeq:	NM_020752.3
RefSeq Size:	6663 bp
RefSeq ORF:	3648 bp
Locus ID:	57512
UniProt ID:	Q5T848
Cytogenetics:	10p12.1
Protein Families:	Druggable Genome, Transmembrane
MW:	135.3 kDa
Gene Summary:	Orphan receptor.[UniProtKB/Swiss-Prot Function]

Product images:



Circular map for RC214433



Western blot validation of overexpression lysate (Cat# [LY412376]) using anti-DDK antibody (Cat# [TA50011-100]). Left: Cell lysates from untransfected HEK293T cells; Right: Cell lysates from HEK293T cells transfected with RC214433 using transfection reagent MegaTran 2.0 (Cat# [TT210002]).