

Product datasheet for **RC214431**

CLEC18C (NM_173619) Human Tagged ORF Clone

Product data:

Product Type:	Expression Plasmids
Product Name:	CLEC18C (NM_173619) Human Tagged ORF Clone
Tag:	Myc-DDK
Symbol:	CLEC18C
Synonyms:	MRCL; MRCL3
Mammalian Cell Selection:	Neomycin
Vector:	pCMV6-Entry (PS100001)
E. coli Selection:	Kanamycin (25 ug/mL)



[View online »](#)

ORF Nucleotide Sequence:

>RC214431 ORF sequence
 Red=Cloning site Blue=ORF Green=Tags(s)

TTTTGTAATACGACTCACTATAGGGCGGCCGGGAATTCGTCGACTGGATCCGGTACCGAGGAGATCTGCC
 GCC**CGGATCGCC**

ATGCTGCATCCAGAGACCTCCCCTGGCCGGGGGCATCTCCTGGCTGTGCTCCTGGCCCTCCTTGGCACCC
 CCTGGGCAGAGGTGTGGCCACCCAGCTGCAGGAGCAGGCTCCGATGGCCGGAGCCCTGAACAGGAAGGA
 GAGTTTCTTGCTCCTCTCCCTGCACAACCCGCTGCGCAGCTGGGTCCAGCCCCCTGCGGCTGACATGCGG
 AGGCTGGACTGGAGTGACAGCCTGGCCAGCTGGCTCAAGCCAGGGCAGCCCTCTGTGGAACCCCAACCC
 CGAGCCTGGCGTCCGGCCTGTGGCGCACCTGCAAGTGGGCTGGAACATGCAGCTGCTACCCGCGGGCTT
 GGTGTCTTTGTGAAGTGGTCAGCCTATGTTTGCAGAGGGGCAGCGGTACAGCCACGCGGCAGGAGAG
 TGTGCTCGCAACGCCACCTGCACCCACTACACGCAGCTCGTGTGGCCACCTCAAGCCAGCTGGGCTGTG
 GCGGCACCTGTGCTCTGCAGGCCAGGCAGCGATAGAAGCCTTTGTCTGTGCCTACTCCCCAGAGGCAA
 CTGGGAGGTCAACGGGAAGACAATCGTCCCCTATAAGAAGGGTGCCTGGTGTTCGCTCTGCACAGCCAGT
 GTCTCAGGCTGCTTCAAAGCCTGGGACCATGCAGGGGGGCTCTGTGAGGTCCCCAGGAATCCTTGTGCGA
 TGAGCTGCCAGAACCATGGACGTCTCAACATCAGCACCTGCCACTGCCACTGTCCCCCTGGCTACACGGG
 CAGATACTGCCAAGTGAGGTGCAGCCTGCAGTGTGTGCACGGCCGGCTCCGGGAGGAGGAGTGTCTGTG
 GTCTGTGACATCGGCTACGGGGGAGCCAGTGTGCCACCAAGGTGCATTTTCCCTTCCACACCTGTGACC
 TGAGGATCGACGGAGACTGTTCATGGTGTCTTCAGAGGCAGACACCTATTACAGAGCCAGGATGAAATG
 TCAGAGGAAAGGCGGGTGTGGCCAGATCAAGAGCCAGAAAGTGCAGGACATCCTCGCCTTCTATCTG
 GGCCGCTGGAGACCACCAACGAGGTGATTGACAGTGACTTCGAGACCAGAACTTCTGGATCGGGCTCA
 CCTACAAGACCGCAAGGACTCCTTCCGCTGGCCACAGGGGAGCACAGGCCTTACCAGTTTTCGCTT
 TGGGCAGCCTGACAACCCAGGGTTTGGCAACTGCGTGGAGCTGCAGGCTTCAGCTGCCTTCAACTGGAAC
 AACCCAGCCTGCAAAACCCGAAACCGTTACATCTGCCAGTTTGCCAGGAGCACATCTCCGGTGGGGCC
 CAGGGTCC

ACGCGTACGCGGCCGCTCGAGCAGAAACTCATCTCAGAAGAGGATCTGGCAGCAAATGATATCCTGGATT
 ACAAGGATGACGACGATAAGGTTTAA

Protein Sequence:

>RC214431 protein sequence
 Red=Cloning site Green=Tags(s)

MLHPETSPGRGHLLAVLLALLGTAWAEVWPPQLQEAPMAGALNRKESFLLL SLHNRLRSWVQPPAADMR
 RLDWSDSLAQLAARAALCGTPTPSLASGLWRTLQVGNMQLLPAGLVSFVEVSLWFAEQRYSHAAGE
 CARNATCTHYTQLVWATSSQLGCGRHLCSAGQAAIEAFVCAYSRGNWEVNGKTI VPKKGAWSLCTAS
 VSGCFKAWDHAGGLCEVPRNPCRMSQNHGRLNISTCHCHCPPGYTGRYCQVRCSLQCVHGRLREEECSC
 VCDIGYGAQCATKVHFPFHTCDLRIDGDCFVMSSEADTYRARMKCQRKGGVLAQIKSQKVDILAFYL
 GRLETTNEVIDSDFETRNFWIGLTYKTAKDSFRWATGEHQAFTSFAFGQPDNHGFGNCVELQASAAFNWN
 NQRCKTRNRYICQFAQEHI SRWGP GS

TRTRPLEQKLISEEDLAANDILDYKDDDDKV

Chromatograms:

https://cdn.origene.com/chromatograms/mk6363_d01.zip

Restriction Sites:

Sgfl-Mlul

Cloning Scheme:


ACCN: NM_173619

ORF Size: 1338 bp

OTI Disclaimer: The molecular sequence of this clone aligns with the gene accession number as a point of reference only. However, individual transcript sequences of the same gene can differ through naturally occurring variations (e.g. polymorphisms), each with its own valid existence. This clone is substantially in agreement with the reference, but a complete review of all prevailing variants is recommended prior to use. [More info](#)

OTI Annotation: This clone was engineered to express the complete ORF with an expression tag. Expression varies depending on the nature of the gene.

Components: The ORF clone is ion-exchange column purified and shipped in a 2D barcoded Matrix tube containing 10ug of transfection-ready, dried plasmid DNA (reconstitute with 100 ul of water).

Reconstitution Method:

1. Centrifuge at 5,000xg for 5min.
2. Carefully open the tube and add 100ul of sterile water to dissolve the DNA.
3. Close the tube and incubate for 10 minutes at room temperature.
4. Briefly vortex the tube and then do a quick spin (less than 5000xg) to concentrate the liquid at the bottom.
5. Store the suspended plasmid at -20°C. The DNA is stable for at least one year from date of shipping when stored at -20°C.

RefSeq: [NM_173619.4](#)

RefSeq Size: 2100 bp

RefSeq ORF: 1341 bp

Locus ID: 283971

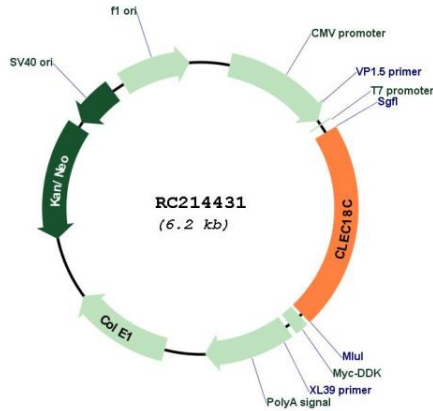
UniProt ID: [Q8NCF0](#)

Cytogenetics: 16q22.1

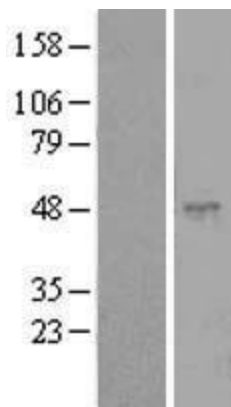
MW: 49.6 kDa

Gene Summary: Binds polysaccharides in a Ca²⁺-independent manner with a preferential binding to fucoidan, beta-glucans and galactans. [UniProtKB/Swiss-Prot Function]

Product images:



Circular map for RC214431



Western blot validation of overexpression lysate (Cat# [LY406509]) using anti-DDK antibody (Cat# [TA50011-100]). Left: Cell lysates from untransfected HEK293T cells; Right: Cell lysates from HEK293T cells transfected with RC214431 using transfection reagent MegaTran 2.0 (Cat# [TT210002]).