

Product datasheet for **RC214422**

ENTPD4 (NM_004901) Human Tagged ORF Clone

Product data:

Product Type:	Expression Plasmids
Product Name:	ENTPD4 (NM_004901) Human Tagged ORF Clone
Tag:	Myc-DDK
Symbol:	ENTPD4
Synonyms:	LALP70; LAP70; LYSAL1; NTPDase-4; UDPase
Mammalian Cell Selection:	Neomycin
Vector:	pCMV6-Entry (PS100001)
E. coli Selection:	Kanamycin (25 ug/mL)



[View online »](#)

ORF Nucleotide Sequence:

>RC214422 representing NM_004901
 Red=Cloning site Blue=ORF Green=Tags(s)

TTTTGTAATACGACTCACTATAGGGCGGCCGGAATTCGTCGACTGGATCCGGTACCGAGGAGATCTGCC
 GCC**CGCATCGCC**

ATGGGGAGGATTGGCATCTCCTGTCTTTTTCTGCTTCTTGGCATTITAGCATATCTCCAGTAGGGTGTCT
 CTGAATTCTGAATACCAATTTACGCCAAATTATGGTCATTAGTGTCTGGCTGCTGCTGTTTCACTTTT
 ATATTTTTCTGTTGTCATAATCCGAAATAAGTATGGGCGACTAACCAGAGACAAGAAATTTCAAAGGTAC
 CTGGCAGGAGTTACCGACATTGAAGCTACAGACACCAATAACCCCAATGTGAAGTATGGGATCGTGGTGG
 ACTGTGGTAGCAGTGGTCTCGAGTATTTGTTTACTGCTGGCAAGGCATAATGGCAATCCACATGATCT
 GTTGGATATCAGGCAATGAGGGATAAAAACCGAAAGCCAGTGGTCATGAAAATAAAACCGGGCATTTC
 GAATTTGCTACCTCTCCAGAGAAAGTCACTGATTACATTTCTCCACTTTTGAATTTGCTGCAGAGCATG
 TGCCACGGGCAAAACACAAGAGACACCTCTACATTCTGACGGCTGGAATGAGAATCCTCCCGGA
 AAGCCAGCAGAAAGCTATTCTGGAAGACCTTCTGACCGATATCCCGTGCCTTTGACTTTCTGTTTCT
 GACTCTCATGCAGAAGTAATTTCTGGGAAACAGGAAGGTGTATGCTTGGATTGGCATTATTTTGTCC
 TTGGACGATTTGAGCATATTGAAGATGATGATGAGGCCGTTGTGGAAGTTAACATTCCTGGAAGTGAAG
 CAGCGAAGCCATTGTCCGTAAGGACAGCGGGCATTCTCGACATGGGCGGCGTGTGACTCAGATAGCG
 TACGAAGTCCCCAAAAGTGAAGCTTTGCGTCTCACAGCAGGAAGAAGTAGTAAAACTTGTTAGCTG
 AATTTAAGTTGGGATGTGATGTTACCAAACTGAGCATGTGTATCGAGTCTATGTGGCCACGTTTCTTGG
 GTTTGGTGGCAATGCTGCTCGACAGAGATACGAAGACAGAATATTTGCCAACACCATTCAAAGAACAGG
 CTCCTGGGTAACAGACTGGTCTGACTCCTGATATGCCGACTTGGACCCCTGCCTACCCCTAGACATTA
 AAGTGAATCCAGCAAAATGGACAACCATATACCTACGAGGGACTGGAGACTTTGACTGTGTCGAGA
 GACTATCCAGCCTTTTATGAATAAAACAACAGACCCAGACTTCCCTCAATGGGGTCTACCGCCCA
 ATTCACTTCCAGAACAGTGAATTCATGGCTTCTCCGAATTCTACTACTGCACCGAGGATGTGTTACGAA
 TGGGGGGAGACTACAATGCTGCTAAATTTACTAAAGCTGCAAAGGATTATTGTGCAACAAAGTGGTCCAT
 TTTGCGGGAACGCTTTGACCGAGGACTGTACGCTCTCATGCTGACCTCCACAGGCTAAGTATCAGTGC
 TTCAAATCGCCTGGATGTTTGGAGTGTTCATAGGGGCTTTTCGTTTCTGTCAACTATAAAAGCTTAA
 AGACTGCCTTGAAGTTTACGACAAGGAGTTCAGTGGACCTTGGAGCCATCCTCTACAGGACCCGCTT
 TCTACCGTTAAGAGACATCCAGCAGGAGCCTTCCGAGCCAGTCACCCACTGGCGGGGCGTTTCTTT
 GTCTACAACCACTACCTGTTCTCTGGCTGCTTCTGGTGGTGTCTGCTGGCCATCCTGCTGTACCTGCTG
 GGCTGCGGCGCATCCACAGGCGCACTCCCGGAGCAGCTCGGCCCGCCCTCTGGATGGAGGAGGCGCT
 TCCCGCCCAAGTATGCCCCGGGGACCTTG

ACGCGTACGCGGCCGCTCGAGCAGAAACTCATCTCAGAAGAGGATCTGGCAGCAATGATATCCTGGATT
 ACAAGGATGACGACGATAAGGTTTAA

Protein Sequence:

>RC214422 representing NM_004901
 Red=Cloning site Green=Tags(s)

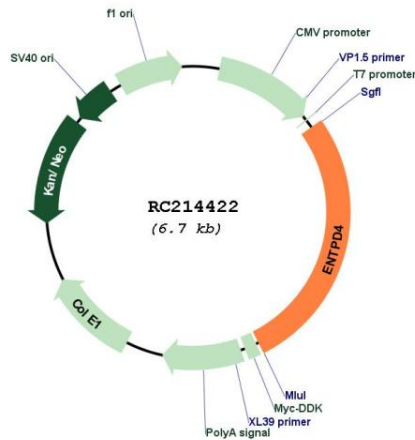
MGRIGISCLFPASWHFISISVPGCPRI LNTNLRQIMVISVLAAAVSLLYFSVVIIRNKYGR LTRDKKFQRY
 LARVTDIEATDTNPNVNYGIVVDCGSSGSRV FVYCWRPHNGNPHDLLDIRQMRDKNRKPVVMKIKPGIS
 EFATSPEKVS DYISPLLNF AAEHVPRAKH KETPLYILCTAGMRILPESQKAILEDLLTDIPVHDFLFS
 DSHAEVISGKQEGVYAWIGINFVLGRFEHIEDDDEAVVEVNIPGESSEAIVRKRTAGILDMGGVSTQIA
 YEVPKTVSFASSQEEVAKNLLAEFNLGCDVHQTEHVYRVYVATFLGFGGNAARQRYEDRIFANTI QKNR
 LLGKQTGLTPDMPYLDPCPLDIKDEIQNGQTIYLRGTGDFDLCRETIQPFMNKTNETQTS LNGVYQPP
 IHFQNSEFYGFSEFYCTEDVLRMGDYNAAKF TKAADYCATKWSILRERFRDGLYASHADLHRLKYQC
 FKSAWMFEV FHRGFSFPVNYKSLKTALQVYDKEVQWTLGAILYRTRFLPLRDIQQEAFRASHTHWRGVSF
 VYNHYLFSGCFLVLLAILLYLLRLRRIHRRTPRSSSAAALWMEEGLPAQNPAGTL

TRTRPLEQKLISEEDLAANDILDYKDDDDKV

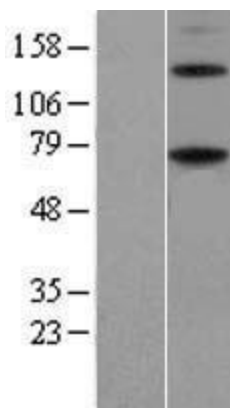
Cytogenetics: 8p21.3
Domains: GDA1_CD39
Protein Families: Transmembrane
Protein Pathways: Lysosome, Purine metabolism, Pyrimidine metabolism
MW: 70.1 kDa

Gene Summary: This gene encodes a member of the apyrase protein family. Apyrases are enzymes that catalyze the hydrolysis of nucleotide diphosphates and triphosphates in a calcium or magnesium-dependent manner. The encoded protein is an endo-apyrase and may play a role in salvaging nucleotides from lysosomes. Alternatively spliced transcript variants encoding multiple isoforms have been observed for this gene, and these isoforms may differ in divalent cation dependence and substrate specificity. [provided by RefSeq, Sep 2011]

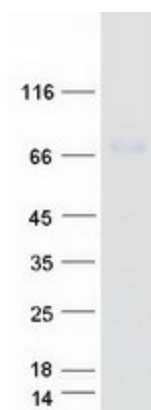
Product images:



Circular map for RC214422



Western blot validation of overexpression lysate (Cat# [LY417671]) using anti-DDK antibody (Cat# [TA50011-100]). Left: Cell lysates from untransfected HEK293T cells; Right: Cell lysates from HEK293T cells transfected with RC214422 using transfection reagent MegaTran 2.0 (Cat# [TT210002]).



Coomassie blue staining of purified ENTPD4 protein (Cat# [TP314422]). The protein was produced from HEK293T cells transfected with ENTPD4 cDNA clone (Cat# RC214422) using MegaTran 2.0 (Cat# [TT210002]).