

Product datasheet for **RC214418**

SLC5A3 (NM_006933) Human Tagged ORF Clone

Product data:

Product Type:	Expression Plasmids
Product Name:	SLC5A3 (NM_006933) Human Tagged ORF Clone
Tag:	Myc-DDK
Symbol:	SLC5A3
Synonyms:	BCW2; SMIT; SMIT1; SMIT2
Mammalian Cell Selection:	Puromycin
Vector:	pLenti-C-mGFP-P2A-Puro (PS100093)
E. coli Selection:	Chloramphenicol (34 ug/mL)



[View online »](#)

ORF Nucleotide
Sequence:

>NM_006933 ORF sequence, RC214418 may differ due to SNPs.
Blue=ORF Red=Cloning site Green=Tag(s)

```
GCTCGTTTAGTGAACCGTCAGAATTTTGTAAACGACTCACTATAGGGCGGCCGGGAATTCGTGCACTG
GATCCGGTACCGAGGAGATCTGCCGCCCGCATCGCC
ATGAGAGCTGTACTGGACACAGCAGACATTGCCATAGTGGCCCTGTATTTTATCCTGGTCATGTGCATT
GGTTTTTTTGGCCATGTGGAAATCTAATAGAAGCACCGTGGTGGATACTCCTGGCGGGGCGCTCTATG
ACCTGGGTAGCAATTGGTGCCTCTCTGTTTGTGAGCAATATTGGGAGTGAGCACTTCATTGGGCTGGCA
GGATCTGGAGCTGCAAGTGGATTTCAGTGGGCGCATGGGAATCAATGCCTTACTGCTTTTACAACCTT
CTGGGATGGGTTTTTCATCCCAATTTACATCCGGTCAGGGGTATATACCATGCCTGAATACTTGTCCAAG
CGATTTGGTGGCCATAGGATTCAAGTCTATTTGCAGCCTTGTCTCTGATTCTCTATATTTTACCAAG
CTCTCGGTGGATCTGTATTCGGGTGCCCTTTTTATCCAGGAGTCTTTGGGTTGGAATCTTTATGTGTCT
GTCATCCTGCTCATTGGCATGACTGCTTTGCTGACTGTCACCGGAGGCCCTGTTGCAGTGATCTACACA
GACTCTGCAGGCTCTGCTCATGATCATTGGGCACTTACACTTATGATTATTAGCATAATGGAGATT
GGCGGGTTTGGAGAAAGTTAAGAGAAGGTACATGTTGGCCTCACCCGATGCACTTCCATCTTATTGACA
TACAACCTTTCCAACACAAATCTTGAATGTCTCCCCTAAGAAAGAAGCCCTGAAAATGCTGCGGAAT
CCAACAGATGAAGATGTTCCCTTGGCCTGGATTCTTCTGGGCAGACCCAGCTTCAGTATGGTACTGG
TGTGCTGACCAAGTCATCGTGCAGAGGGTCTTGCAGCCAAAAACATTGCTCATGCCAAAGGCTCTACT
CTTATGGCTGGCTTCTTAAAGCTCCTGCCAATGTTTATCATAGTTGTCCCAGGAATGATTCCAGGATA
CTGTTTACTGATGATATAGCTTGCATCAACCCAGAGCACTGCATGCTGGTGTGTGGAAGCAGAGCTGGT
TGCTCCAATATTGCTTACCCACGCTGGTGTGAAGCTGGTTCCTGTGGGCTTCGGGGTTAATGATG
GCAGTGATGATTGCAGCTCTGATGAGTACTTACTCTATCTTTAACAGTGCAGTACCATATTCACC
CTCGATGTGTACAACTTATCCGCAAGAGCGCAAGCTCCCGGGAGTTAATGATTGTGGGAGGATATTT
GTGGCATTATGGTGGTGTGATCAGCATAGCATGGGTGCCAATCATCGTGGAGATGCAAGGAGCCAGATG
TACCTTTACATTCAGGAGGTAGCAGATTACCTGACACCCCAAGTGGCAGCCTTGTTCCTGCTGGCAATT
TTCTGGAAGCGCTGCAATGAACAAGGGGCTTTCTATGGTGAATGGCTGGCTTTGTTCTTGGAGCAGTC
CGTTTGATACTGGCCTTTGCCTACCGTGCCCGAGAATGTGACCAACCTGATAATAGGCCGGGCTTCATC
AAAGACATCCATTATATGTATGTGGCCACAGGATTGTTTTGGGTCACGGGACTCATTACTGTAATTGTG
AGCCTTCTCACACCCTCCACAAAGGAACAGATTCGAACCACCACCTTTTGGTCTAAGAAGAACCTG
GTGGTGAAGGAGAACTGCTCCCCAAAAGAGGAACCATAAAAAATGCAAGAAAAGAGCATTCTGAGATGC
AGTGAGAATAATGAGACCATCAACCACATCATTCCAACGGGAAATCTGAAGACAGCATTAAAGGCCTT
CAGCCTGAAGATGTTAATCTGTTGGTAACTGCAGAGAGGAGGGCAACCCAGTGGCATCCTTAGGTCAT
TCAGAGGCAGAAAACACAGTTGACGCTTACTCCAATGGGCAAGCAGCTCTCATGGGTGAGAAAGAGAGA
AAGAAAGAAACGGATGATGGAGGTCCGTAAGTTCATAGACTGGTTTTGTGGCTTTAAAAGTAAG
AGCCTCAGCAAGAGGAGTCTCAGAGACCTGATGGAAGAGGAGGCTGTTTGTTTACAGATGCTAGAAGAG
ACTCGGCAAGTTAAAGTAATACTAAATATTGGACTTTTTGCTGTGTGTTCACTTGGAAATTTTCATGTTT
GTTTATTTCTCCTTA
ACGCGTACGCGGCCGCTCGAGCAGAACTCATCTCAGAAGAGGATCTGGCAGCAATGATATCCTGGAT
TACAAGGATGACGACGATAAGGTTTAAACGGCCGGC
```

Protein Sequence: >Peptide sequence encoded by RC214418
 Blue=ORF Red=Cloning site Green=Tag(s)

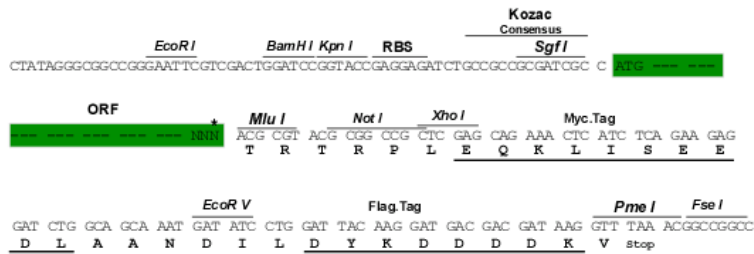
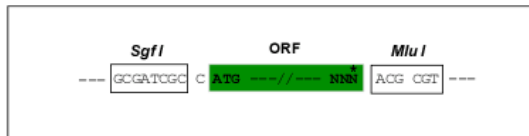
MRAVLDTADIAIVALYFILVMCIGFFAMWKSNRSTVSGYFLAGRSMTWVAIGASLFVSNIGSEHFIGLA
 GSGAASGFVAGAWEFNALLLLQLLGWVFIPIYIRSGVYTMPEYL SKRFGGHRIQVYFAALSLILYIFTK
 LSVDLYSGALFIQESLGNLYVSVILLIGMTALLTVTGGLVAVIYDRTLQALLMIIGALTLMIISIMEI
 GGFEEVKRRYMLASPDVTSILLTYNLSNTNSCNVSPKKEALKMLRNPTDEDVWPWPGFILGQTPASVWYW
 CADQVIVQVRVLAAKNIAHAKGSTLMAGFLKLLPMFIIIVVPGMISRILFTDDIACINPEHCMLVCGSRAG
 CSNIAYPRLVMKLVVGLRGLMMAVMIAALMSDLDSIFNSASTIFTLDVYKLRKSASSRELMIVGRIF
 VAFMVVISIAWVPIIVEMQGGQMYLYIQEVADYLTPPVAALFLLAIFWKRCNEQGAFYGGMAGFVLGAV
 RLILAFAYRAPECDQPDNRPGFIKDIHYMYVATGLFWVTGLITIVISLLTPPPTKEQIRTTTTFWSKKNL
 VVKENCSPKEEPYKMQEKSILRCSENNETINHIIPNGKSEDSIKGLQPEDVNLLVTCREEGPNVASLGH
 SEAETPVDAYSNGQAALMGEKERKKETDDGGRYWKFIDWFCGFKSKLSKRSLRDLMEEEAVCLQMLEE
 TRQVKVILNIGLFAVCSLGI MFVYFSL
 TRTRPLEQKLI SEEDLAANDILDYKDDDDKV

Chromatograms: https://cdn.origene.com/chromatograms/mk6676_d04.zip

Restriction Sites: SgfI-MluI

Cloning Scheme:

Cloning sites used for ORF Shuttling:



* The last codon before the Stop codon of the ORF

ACCN: NM_006933

ORF Size: 2154 bp

OTI Disclaimer: Due to the inherent nature of this plasmid, standard methods to replicate additional amounts of DNA in E. coli are highly likely to result in mutations and/or rearrangements. Therefore, OriGene does not guarantee the capability to replicate this plasmid DNA. Additional amounts of DNA can be purchased from OriGene with batch-specific, full-sequence verification at a reduced cost. Please contact our customer care team at custsupport@origene.com or by calling 301.340.3188 option 3 for pricing and delivery.

The molecular sequence of this clone aligns with the gene accession number as a point of reference only. However, individual transcript sequences of the same gene can differ through naturally occurring variations (e.g. polymorphisms), each with its own valid existence. This clone is substantially in agreement with the reference, but a complete review of all prevailing variants is recommended prior to use. [More info](#)

OTI Annotation: This clone was engineered to express the complete ORF with an expression tag. Expression varies depending on the nature of the gene.

Components: The ORF clone is ion-exchange column purified and shipped in a 2D barcoded Matrix tube containing 10ug of transfection-ready, dried plasmid DNA (reconstitute with 100 ul of water).

Reconstitution Method:

1. Centrifuge at 5,000xg for 5min.
2. Carefully open the tube and add 100ul of sterile water to dissolve the DNA.
3. Close the tube and incubate for 10 minutes at room temperature.
4. Briefly vortex the tube and then do a quick spin (less than 5000xg) to concentrate the liquid at the bottom.
5. Store the suspended plasmid at -20°C. The DNA is stable for at least one year from date of shipping when stored at -20°C.

Note: Plasmids are not sterile. For experiments where strict sterility is required, filtration with 0.22um filter is required.

RefSeq: [NM_006933.7](#)

RefSeq Size: 11566 bp

RefSeq ORF: 2157 bp

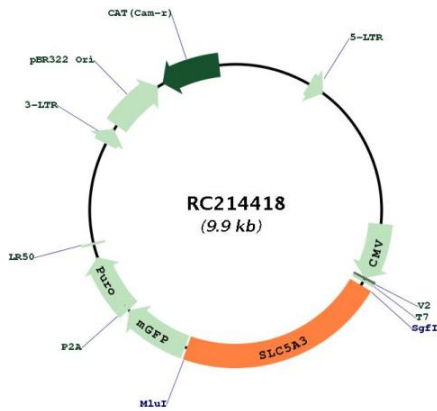
Locus ID: 6526

Cytogenetics: 21q22.11

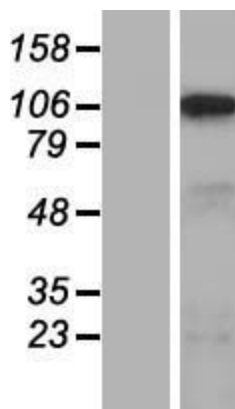
Protein Families: Transmembrane

MW: 79.7 kDa

Product images:



Circular map for RC214418



Western blot validation of overexpression lysate (Cat# [LY416312]) using anti-DDK antibody (Cat# [TA50011-100]). Left: Cell lysates from untransfected HEK293T cells; Right: Cell lysates from HEK293T cells transfected with RC214418 using transfection reagent MegaTran 2.0 (Cat# [TT210002]).