

## Product datasheet for **RC214415**

### **DBNDD2 (NM\_001048226) Human Tagged ORF Clone**

#### Product data:

**Product Type:** Expression Plasmids  
**Product Name:** DBNDD2 (NM\_001048226) Human Tagged ORF Clone  
**Tag:** Myc-DDK  
**Symbol:** DBNDD2  
**Synonyms:** C20orf35; CK1BP; HSMNP1  
**Vector:** pCMV6-Entry (PS100001)  
**E. coli Selection:** Kanamycin (25 ug/mL)  
**Cell Selection:** Neomycin  
**ORF Nucleotide Sequence:** >RC214415 representing NM\_001048226  
**Red=Cloning site Blue=ORF Green=Tags(s)**

TTTTGTAATACGACTCACTATAGGGCGGCCGGAATTCGTCGACTGGATCCGGTACCGAGGAGATCTGCC  
GCC**CGGATCGCC**

ATGGAGAGTTGGGCATTGGCTGTGTTCCCTGAATACAGAGTATCTCTTGTGGTGCCTGGAAGTGGCAT  
CCCCTTTGTGGAGCTTAGGGCAAGCCCCGCTCTGCATGAGACTTGGTTTGTGGGACACACTTGGTTTCA  
GGGAAGGGGAAAGAGGTCACCAAGGGCAGAGGTGTCCAGGCCGGAGCCAGGGGCCCACTGTTGGGATGC  
TGGCTGCAGTGGGGCGCCCAAGCCAGGTCCCTCTGTCTTCTCTTTGACTTTGCAGCTGTACTTGTT  
TTGCTCCTCTACCCGAGGAGCTGACATGGACCAAAATCCTCGGGCCGCCCTGGAGCGCCAGCAGCTCCG  
CCTTCGGGAGCGGCAAAAATTCTTCGAGGACATTTTACAGCCAGAGACAGAGTTTGTCTTCTCTGTCC  
CATCTGCATCTCGAGTCGAGAGACCCCCATAGGTAGTATCTCATCCATGGAAGTGAATGTGGACACAC  
TGGAGCAAGTAGAACTTATTGACCTTGGGGACCCGGATGCAGCAGATGTGTTCTTGCCTTGCAGATCC  
TCCACCAACCCCGAGTCGTCTGGTATGCCCTCTGCTTGGGGACTTCAGTGCCAGTCAGCCAGAGCCG  
GATGTCAGGCTC

**ACGCGT**ACGCGGCCGCTCGAGCAGAACTCATCTCAGAAGAGGATCTGGCAGCAAATGATATCCTGGATT  
ACAAGGATGACGACGATAAGGTTTAA



[View online »](#)

**Protein Sequence:** >RC214415 representing NM\_001048226  
Red=Cloning site Green=Tags(s)

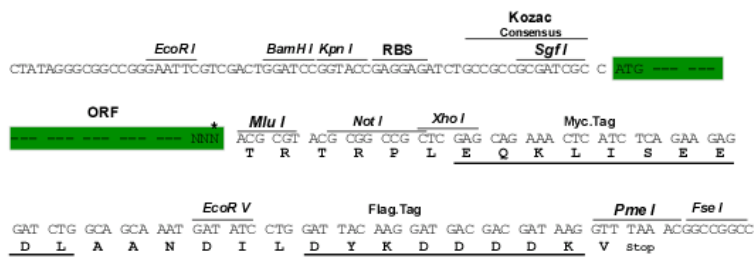
MESWALAVFPEYRVSLWLCELEASPLWSLQAPPLHETWFGHTWFQGRGKRSPRAEVS RPEPGAPLLGC  
 WLQWGAPSPGPLCLLFR LCSCTCFAPLPAGADMDPNPRAALERQQLRLRERQKFFEDILQPETEFVPLS  
 HLHLESQRPPIGS ISSMEVNVDTLEQVELIDLGPDAADVFLPCEDPPPTPQSSGMPLCFGDFSASQPEP  
 DVRL

TRTRPLEQKLISEEDLAANDILDYKDDDDKV

**Restriction Sites:** Sgfl-MluI

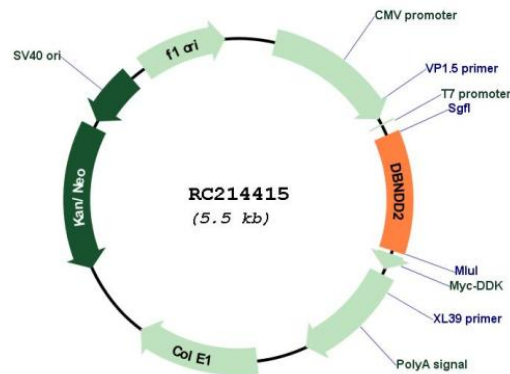
**Cloning Scheme:**

Cloning sites used for ORF Shuttling:



\* The last codon before the Stop codon of the ORF

**Plasmid Map:**



**ACCN:** NM\_001048226

**ORF Size:** 642 bp

<b>OTI Disclaimer:</b>	The molecular sequence of this clone aligns with the gene accession number as a point of reference only. However, individual transcript sequences of the same gene can differ through naturally occurring variations (e.g. polymorphisms), each with its own valid existence. This clone is substantially in agreement with the reference, but a complete review of all prevailing variants is recommended prior to use. <a href="#">More info</a>
<b>OTI Annotation:</b>	This clone was engineered to express the complete ORF with an expression tag. Expression varies depending on the nature of the gene.
<b>Components:</b>	The ORF clone is ion-exchange column purified and shipped in a 2D barcoded Matrix tube containing 10ug of transfection-ready, dried plasmid DNA (reconstitute with 100 ul of water).
<b>Reconstitution Method:</b>	<ol style="list-style-type: none"><li>1. Centrifuge at 5,000xg for 5min.</li><li>2. Carefully open the tube and add 100ul of sterile water to dissolve the DNA.</li><li>3. Close the tube and incubate for 10 minutes at room temperature.</li><li>4. Briefly vortex the tube and then do a quick spin (less than 5000xg) to concentrate the liquid at the bottom.</li><li>5. Store the suspended plasmid at -20°C. The DNA is stable for at least one year from date of shipping when stored at -20°C.</li></ol>
<b>RefSeq:</b>	<a href="#">NM_001048226.2</a> , <a href="#">NP_001041691.2</a>
<b>RefSeq Size:</b>	1538 bp
<b>RefSeq ORF:</b>	339 bp
<b>Locus ID:</b>	55861
<b>Cytogenetics:</b>	20q13.12
<b>MW:</b>	23.9 kDa
<b>Gene Summary:</b>	May modulate the activity of casein kinase-1. Inhibits CSNK1D autophosphorylation (in vitro). [UniProtKB/Swiss-Prot Function]