

Product datasheet for RC214413

DAB2IP (NM_032552) Human Tagged ORF Clone

Product data:

Product Type:	Expression Plasmids
Product Name:	DAB2IP (NM_032552) Human Tagged ORF Clone
Tag:	Myc-DDK
Symbol:	DAB2IP
Synonyms:	AF9Q34; AIP-1; AIP1; DIP1/2
Mammalian Cell Selection:	Neomycin
Vector:	pCMV6-Entry (PS100001)
E. coli Selection:	Kanamycin (25 ug/mL)
ORF Nucleotide Sequence:	>RC214413 representing NM_032552 Red=Cloning site Blue=ORF Green=Tags(s)

TTTTGTAATACGACTCACTATAGGGCGGCCGGAATTCGTCGACTGGATCCGGTACCGAGGAGATCTGCC
GCC**CGATCGC**C

ATGGAGCCCGACTCCCTTCTGGACCAAGACGACTCCTACGAGTCGCCTCAAGAAAGGCCGGGCTCTCGGC
GCAGCCTGCCTGGCAGCCTTCCGAGAAGAGCCCCAGCATGGAGCCCTCGGCCGCCACGCCGTTCCGGGT
CACGGGCTTCTCAGCCGCCCTCAAGGGCTCCATCAAGCGCACCAAGAGCCAGCCAAGCTGGACCGC
AACCACAGCTTCCGCCACATCCTGCCGGGGTCCGGAGCGCCGCCGCCGCCGCGGACAATGAGAGGT
CCCATCTGATGCCGAGGCTGAAGGAGTCTCGCTCCACGAGTCCCTGCTCAGCCCCAGCAGTGCAGTGGG
GGCGCTGGACCTCAGCATGGAGGAAGAGGTGGTCAAGCCCCGTCACAGCAGCATCCTTGCCAGGAC
TACTGCTTCGAGGTGACGACGTATCAGGAAGCAAGTGTCTTCTGCCGGTCTGACGCTGAGCGGGATA
AGTGGATGGAGAACCTCCGGCGAGCGGTGCATCCCAACAAGGACAACAGCCGGCGTGTGGAGCACATCCT
GAAGCTGTGGGTGATCGAGGCCAAGGACCTGCCAGCCAAGAAGAAGTACCTGTGCGAGCTGTGCCTGGAC
GATGTGCTCTATGCCCGCACACGGGCAAGCTCAAGACGGACAATGTTTTCTGGGGCGAGCACTTCGAGT
TCCACAACCTGCCGCTCTGCGCACGGTCACTGTCCACCTGTACCGGGAGACCGACAAGAAGAAGAAGAA
GGAGCGCAACAGTTACCTGGGCCTGGTGAAGCCTACCTGCTGCCTCGGTGGCCGGCGCAGTTCGTGGAG
AAGTGGTACCCGGTGGTGAAGCCCAACCCCAAGGGCGGCAAGGGCCCTGGACCAATGATCCGCATCAAG
CGCGTACCAAACCATCACCATCCTGCCATGGAGATGTACAAAGAGTTGCTGAGCACATCACCAACCA
CTACCTGGGGCTGTGTGACGCCCTCGAGCCCATCCTCAGTGCCAAGACCAAGGAGGAGATGGCATCTGCC
CTGGTGCACATCCTGCAGAGCACGGGCAAGGTGAAGGACTTCTGACAGACCTGATGATGTGAGAGTGG
ACCGCTGCGGGGACAACGAGCACCTCATCTCCGGGAGAACAACACTGGCCACCAAGGCCATTGAGGAGTA
CCTCAAGTAGTGGGCCAGAAGTACCTGCAGGACGCCCTAGGTGAGTTCATCAAAGCGCTGTATGAGTCA
GATGAGAACTGCGAAGTGGATCCAGCAAGTGCTCGGCCGCTGACCTCCAGAGCACCAGGGCAACCTCA
AGATGTGCTGCGAGCTGGCCTTCTGCAAGATCATCAACTCCTACTGTGTCTTCCACGGGAGTTGAAAGA
GGTGTTCCTCGTGAGGCAGGAGTGCAGCAGTCGCGGCCGCCCGGACATCAGTGAGCGGCTCATCAGC



[View online »](#)

GCCTCCCTCTTCCTGCGCTTCCTCTGCCAGCCATCATGTGCGCCCTCACTCTTCAACCTGCTGCAGGAGT
ACCCTGATGACCGCACTGCCCGCACCTCACCTCATCGCCAAGGTCACCCAGAACCTGGCCAACTTTGC
CAAATTTGGCAGCAAGGAGGAATACATGTCCTTATGAACCAGTTCTAGAGCATGAGTGGACCAACATG
CAGCGCTTCTGCTGGAGATCTCCAACCCCGAGACCCTCTCCAATACAGCCGGCTTCGAGGGCTACATCG
ACCTGGGCCGCGAGCTCTCCAGCCTGCACTCACTGCTCTGGGAGGCCGTCCAGCCAGCTGGAGCAGAGCAT
AGTATCCAAACTGGGACCCTGCCTCGGATCCTGAGGGACGTCCACACAGCACTGAGCACCCAGGTAGC
GGCAGCTCCCAGGGACCAATGACCTGGCCTCCACACCGGGCTCTGGCAGCAGCAGCATCTCAGCTGGC
TGCAGAAGATGGTGATTGAGAACGATCTTCCGGTCTGATAGATTTACCCGGTTACCGTCTCCAACCC
CGAAAACAAGGACTTGTTTTTGTCAAAAGTCTCCGGGTCCAGCCCTCACCTGCCCGCAGCTCGAGT
TACTCGGAAGCCAACGAGCCTGATCTTCAGATGGCCAACGGTGGCAAGAGCCTCTCCATGGTGGACCTCC
AGGACGCCCGCAGCTGGATGGGAGGCAGGCTCCCCGGCGGGCCCCGACGTCTCCCCACAGATGGGCA
GGCCGCTGCAGCTCAGCTGGTGGCCGGTGGCCGGCCCCGGCAACCCAGTGAACCTGGCAGGGCTGGCC
ACGGTGCGGCGGGCAGGCCAGACACCAACCACACCAGGCACCTCCGAGGGCGGCCAGGCCGGCCCCAGC
TGTTGGCACCGCTCTCCTCCAGAACCCTGTGTACCAGATGGCGGCTGGCCTGCCGTGTACCCCGTGG
CCTTGGCGACTCAGGCTCTGAGGGCCACAGCTCCCTGAGCTCACACAGCAACAGCGAGGAGTTGGCGGT
GCTGCCAAGCTGGGAAGTTTCAGCACTGCCGCGGAGGAGCTGGCTCGGGCGCCCGGTGAGCTGGCACGGC
GACAGATGTCAGTACTGACTGAAAAAGGCGGGCAGCCACGGTGCACGGCAGAACAGTGTGGCCCCAGAG
GAGGATCGACCAGCCTCCGCCCCACCCCGCCGCCACCTCTGCCCCCCGCGGCCGGACGCCCCCAAC
CTGCTGAGCACCTGCAGTACCCAAGACCTCAAGCGAACCTGGCGTCGGCCTCACCTGATTGGGTGG
GCCCCAGTACCCGCTGAGGCAGCAGTCTTCTTCCAAAGGGGACAGCCAGAAGTGAAGCCACGGGC
AGTGCACAAGCAGGGCCCTTACCTGTGAGCCCAATGCCCTGGACCGCACAGCCGCTTGGCTCTTGACC
ATGAACCGCAGTTGTTAGAAGACGAGGGCCTGGGCCAGACCCCCCCACAGGGATAGGCTAAGGAGTA
AGGACGAGCTCAGCCAAGCAGAAAAGACCTGGCGGTGCTGCAGGACAAGCTGCGAATCTCCACCAAGAA
GCTGGAGGAGTATGAGACCCTGTTCAAGTGCCAGGAGGACGACGACAGAAAGCTGGTGTGAGTACCAG
GCACGGCTGGAGGAGGGCAGGAGCGGCTGCGGGCAGCAGGAGGACAAGGACATCCAGATGAAGGGCA
TCATCAGCAGTTGATGTCCGTGGAGGAAGAACTGAAGAAGGACCACGCAGAGATGCAAGCGGCTGTGGA
CTCCAAACAGAAGATCATTGATGCCAGGAGAAGCGCATTGCCTCGTTGGATGCCCCAATGCCCGCCTC
ATGAGTGCCCTGACCCAGCTGAAAGAGAGTATGCAT

ACGGTACGCGGCCGCTCGAGCAGAACTCATCTCAGAAGAGGATCTGGCAGCAATGATATCCTGGATT
ACAAGGATGACGACGATAAGGTTTAA

Protein Sequence: >RC214413 representing NM_032552
Red=Cloning site Green=Tags(s)

```
MEPDSLDDQDDSYESPQERPGSRRSLPGSLSEKSPSMEPSAATPFRVTGFLSRRLKGSIKRTKSQPKLDR
NHSFRHILPGFRSAAAAAADNERSHLMRPLKESRSHELLSPSSAVEALDLSMEEVVVVKPVHSSILGQD
YCFEVTSSSGSKCFSCRSAAERDKWMENLRRAVHPNKNDSRRVEHILKLWVIEAKDLPKAKKYLCELC
DVL YARTTGK LKTDNVFWGEHFEFHNLPPLRTVTVHL YRETDKKKKKERN SYLGLVSLPAASVAGRQFVE
KWYPVVT PNP KGGKPGPMIRIKARYQTIILPMEYKEFAEHITNH YLGLCAALEPILSAKTKEEMASA
LVHILQSTGKVKDFLTDLMMSEVDRCGDNEHLIFRENTLATKAIEEYLKLVGQKYLQDALGEFIKALYES
DENCEVDPSKCSAADLPEHQNLKMCCELAFCKIINSYCVFRELKEVFASWRQECSSRGRPDISERLIS
ASLFLRFLCPAIMSPSLFNLLQEYPDDRTARTLTLIAKVTQNLANFAKFGSKEEYMSFMNQFLEHEWTNM
QRFLLEISNPETLSNTAGFEGYIDLGRESSLHSLLEAVSQLEQSI VSKLGPLPRILRDVHTALSTPGS
GQLPGTNDLASTPGSGSSISAGLQKVIENDLSGLIDFTRLPSPTPENKDLFFVTRSSGVQPSPARSSS
YSEANEPDLQMANGGKSLSMVDLQDARTLDGEAGSPAGPDVLP TDGQAAAAQLVAGWPARATPVNLAGLA
TVRRAGQTPPTPGTSEGAPGRPQLLAPLSFQNPVYQMAAGLPLSPRGLGDSGSEGHSSLSHNSNSEELAA
AAKLGSFSTAAEELARRPGELARRQMSLTEKGGQPTVPRQNSAGPQRRIDQPPPPPPPPPPAPRGRTPPN
LLSTLQYPRPSSGTLASAPDWVGPSTRLRQSSSSKGDSPELKPRAVHKQGPSVPSPNALDRTAAWLLT
MNAQLLEDEGLGPDPPHRDLRLSKDELQA EKDLAVLQDKLRISTKKLEEYETLFKCQEETTQKLVLEYQ
ARLEEGEERLRRQQEDKDIQMKGIISRLMSVEEELKKDHAEMQAAVDSKQKIIDAQEKRIASLDAANARL
MSALTQLKESMH
```

TRTRPLEQKLISEEDLAANDILDYKDDDDKV

Chromatograms: https://cdn.origene.com/chromatograms/mk8031_a05.zip

Restriction Sites: SgfI-MluI

Cloning Scheme:

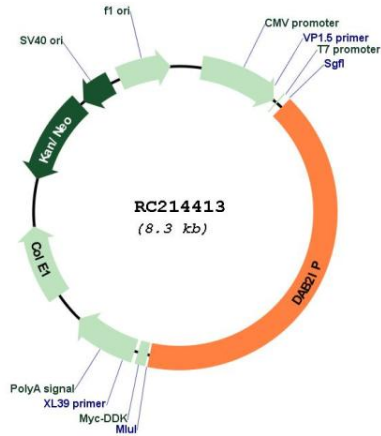


ACCN: NM_032552

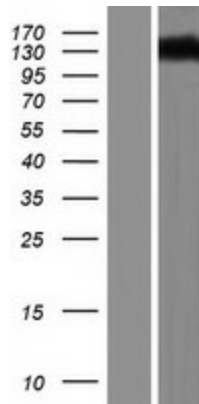
ORF Size: 3396 bp

OTI Disclaimer:	<p>Due to the inherent nature of this plasmid, standard methods to replicate additional amounts of DNA in E. coli are highly likely to result in mutations and/or rearrangements. Therefore, OriGene does not guarantee the capability to replicate this plasmid DNA. Additional amounts of DNA can be purchased from OriGene with batch-specific, full-sequence verification at a reduced cost. Please contact our customer care team at custsupport@origene.com or by calling 301.340.3188 option 3 for pricing and delivery.</p> <p>The molecular sequence of this clone aligns with the gene accession number as a point of reference only. However, individual transcript sequences of the same gene can differ through naturally occurring variations (e.g. polymorphisms), each with its own valid existence. This clone is substantially in agreement with the reference, but a complete review of all prevailing variants is recommended prior to use. More info</p>
OTI Annotation:	This clone was engineered to express the complete ORF with an expression tag. Expression varies depending on the nature of the gene.
Components:	The ORF clone is ion-exchange column purified and shipped in a 2D barcoded Matrix tube containing 10ug of transfection-ready, dried plasmid DNA (reconstitute with 100 ul of water).
Reconstitution Method:	<ol style="list-style-type: none"> 1. Centrifuge at 5,000xg for 5min. 2. Carefully open the tube and add 100ul of sterile water to dissolve the DNA. 3. Close the tube and incubate for 10 minutes at room temperature. 4. Briefly vortex the tube and then do a quick spin (less than 5000xg) to concentrate the liquid at the bottom. 5. Store the suspended plasmid at -20°C. The DNA is stable for at least one year from date of shipping when stored at -20°C.
RefSeq:	<u>NM_032552.3, NP_115941.2</u>
RefSeq Size:	5472 bp
RefSeq ORF:	3399 bp
Locus ID:	153090
UniProt ID:	<u>Q5VWQ8</u>
Cytogenetics:	9q33.2
MW:	124.9 kDa
Gene Summary:	DAB2IP is a Ras (MIM 190020) GTPase-activating protein (GAP) that acts as a tumor suppressor. The DAB2IP gene is inactivated by methylation in prostate and breast cancers (Yano et al., 2005 [PubMed 15386433]).[supplied by OMIM, May 2010]

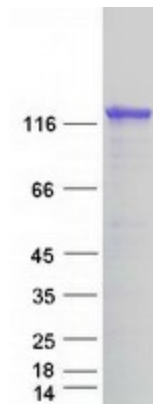
Product images:



Circular map for RC214413



Western blot validation of overexpression lysate (Cat# [LY410041]) using anti-DDK antibody (Cat# [TA50011-100]). Left: Cell lysates from untransfected HEK293T cells; Right: Cell lysates from HEK293T cells transfected with RC214413 using transfection reagent MegaTran 2.0 (Cat# [TT210002]).



Coomassie blue staining of purified DAB2IP protein (Cat# [TP314413]). The protein was produced from HEK293T cells transfected with DAB2IP cDNA clone (Cat# RC214413) using MegaTran 2.0 (Cat# [TT210002]).