

Product datasheet for **RC214411**

Rho GTPase activating protein 24 (ARHGAP24) (NM_031305) Human Tagged ORF Clone

Product data:

Product Type:	Expression Plasmids
Product Name:	Rho GTPase activating protein 24 (ARHGAP24) (NM_031305) Human Tagged ORF Clone
Tag:	Myc-DDK
Symbol:	Rho GTPase activating protein 24
Synonyms:	FILGAP; p73; p73RhoGAP; RC-GAP72; RCGAP72
Mammalian Cell Selection:	Neomycin
Vector:	pCMV6-Entry (PS100001)
E. coli Selection:	Kanamycin (25 ug/mL)



[View online »](#)

ORF Nucleotide
Sequence:

>RC214411 representing NM_031305
Red=Cloning site Blue=ORF Green=Tags(s)

TTTTGTAATACGACTCACTATAGGGCGGCCGGAATTCGTCGACTGGATCCGGTACCGAGGAGATCTGCC
GCCGCGATCGCC

ATGCCTGAAGACCGGAATCTGGGGGTGCCCGCTGGTGCCTTAGCCTCAACTCCTTTCATCCCTAAAA
CTACATACAGAAGAATCAAACGGTGTTTTAGTTTTCGGAAAGGCATTTTTGGACAGAACTGGAGGATAC
TGTTCTGTATGAGAAGAGATATGGGAACCGTCTGGCTCCGATGTTGGTGGAGCAGTGCCTGGACTTTATC
CGACAAAGGGGGCTGAAAGAAGAGGGTCTCTTTCGACTGCCAGGCCAGGCTAATCTTGTAAAGGAGCTCC
AAGATGCCTTTGACTGTGGGGAGAAGCCATCATTTGACAGCAACACAGATGTACACACGGTGGCCTCACT
TCTTAAGCTGTACCTCCGAGAATTCCAGAACCAGTTATTCCTTATGCGAAGTATGAAGATTTTTGTCA
TGTGCCAACTGCTCAGCAAGGAAGAGGAAGCAGGTGTTAAGGAATTAGCAAAGCAGGTGAAGAGTTTGC
CAGTGGTAAATTACAACCTCCTCAAGTATATTTGCAGATTCCTGGATGAAGTACAGTCTACTCGGGAGT
TAACAAAATGAGTGTGCAGAACTGGCAACGGTCTTTGGTCTAATATCCTGCGCCCCAAAGTGGAAAGT
CCTTTGACTATCATGGAGGGCACTGTGGTGGTCCAGCAGTTGATGTCAGTGATGATTAGCAAACATGATT
GCCTCTTTCCTAAAGATGCAGAACTACAAGCAAGCCCCAAGATGGAGTGAAGCAACAACATGAAATTC
GAAGAAAGCCACCATGGGGCAGTTACAGAAACAGGAGAACAATAACACCAAGGACAGCCCTAGTAGGCAG
TGCTCCTGGGACAAGTCTGAGTACCCAGAGAGCAGCATGAACAATGGATCCCCACAGCTCTATCAG
GCAGCAAAACCAACAGCCCAAAGAACAGTGTTCACAAGCTAGATGTGTCTAGAAGCCCCCTCTCATGGT
CAAAAAGAACCAGCCTTAATAAGGGTAGTGGGATAGTTACCAATGGTCTTCAGCAGCAGTAATGCA
GAAGGTCTTGAGAAAACCAACCAACCCCAATGGGAGCCTACAGGCCAGAAGGAGCTTCTACTGAAGG
TATCTGGTACAAAATGGGCACGCACAGTGTACAGAATGGAACGGTGCAGTGGGCATTTTGAACAGCGA
CACACTCGGGAACCCACAAATGTTGAAACATGAGCTGGCTGCCAAATGGCTATGTGACCCTGAGGGAT
AACAAAGCAGAAAGAACAAGCTGGAGAGTTAGGCCAGCACAAACAGACTGTCCACCTATGATAATGTCCATC
AACAGTTCTCCATGATGAACCTTGTGACAAGCAGAGCATTGACAGTGTACCTGGTCCACTTCTCCTCTG
TGAAATCTCCCTCCCTGAGAACTCCAACCTGTGCTCTTCTACCACCCTGCCAGAGCAAGACTTT
TTTGGGGGAACTTTGAGGACCCTGTTTTGGATGGGCCCCCGCAGGACGACCTTTCCACCCAGGGACT
ATGAAAGCAAAAGTGACCACAGGAGTGTGGGAGTCAAGTAGTCGTGCCACCAGTAGCAGTGACAACAG
TGAGACATTTGTGGCAACAGCAGCAGCAACCACAGTGCCTGCACAGTTTGTGTTCCAGCCTGAAACAG
GAAATGACCAAAACAGAAGATAGAGTATGAGTCCAGGATAAAGAGCTTAGAACAGCGAAACTTGACTTTGG
AAACAGAAATGATGAGCCTCCATGATGAACTGGATCAGGAGAGGAAAAAGTTCACAATGATAGAAATAAA
AATGCGAAATGCCGAGGAGCAAAAAGAGATGCCGAGAAAAAGAAATGACATGCTACAGAAAAGAAATGGAG
CAGTTTTTTTCCAGTGGGAGAACTGACAGTGGAAACCCAGGAGAACCGAGAGAGGAAACACAATATGGA
TTCAG

ACGCGTACGCGGCCGCTCGAGCAGAACTCATCTCAGAAGAGGATCTGGCAGCAATGATATCCTGGATT
ACAAGGATGACGACGATAAGGTTTAA

Protein Sequence: >RC214411 representing NM_031305
 Red=Cloning site Green=Tags(s)

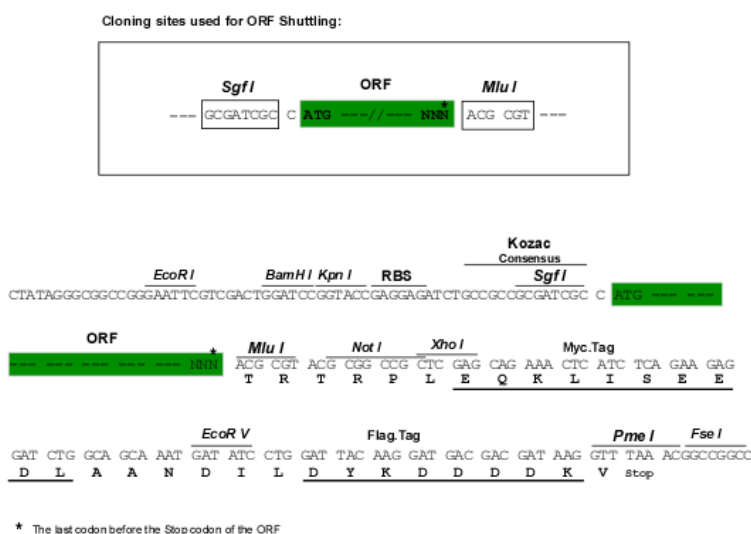
```
MPEDRNSGGCPAGALASTPFIPKTTYRRIKRCFSFRKGI FGQKLEDTVREYKRYGNRLAPMLVEQCVDIFI
RQRGLKEEGLFRLPGQANLVKELQDAFDCGKPSFDSNTDVHTVASLLKLYLRELPEPVIPIYAKYEDFLS
CAKLLSKEEEAGVKELAKQVKS LPPVNNL LKYICRFLDE VQSYSGVNKMSVQNLATVFGPNILRPKVED
PLTIMEGTVVVQQLMSVMI SKHDCLFPKDAELQSKPQDGVSNNNEIQK KATMGQLQNKENNNTKDSPSRQ
CSWDKSESPQRSSMNGSPTALSGSKTNSPKNSVHKLDVSRSPPLMVKKNPAFNKSGSIVTNGSFSSSNA
EGLEKTQTTPNGSLQARRSSSLK VSGTKMGTHSVQNGTVR MGILNSDTLGNPTNVRNMSWLPNGYVTLRD
NKQKEQAGELGQHNRLSTYDNVHQQFSMMNLDDKQSIDSATWSTSSCEISLPENSNSCRSSTTTTCEQDF
FGGNFEDPVL D GPPQDDL SHPRDY EKSDHR SVGGRSSRATSSSDNSETFVGNSSSNHSALHSLVSSLKQ
EMTKQKIEYESRIKSLEQRNL TLETEMMSLHDEL DQERKKFTMIEIKMRNAERAKEDA EKRNDMLQKEME
QFFSTFGELTVEPRRTERGNTIWIQ
```

TRTRPLEQKLI SEEDLAANDILDYKDDDDKV

Chromatograms: https://cdn.origene.com/chromatograms/mk8071_f08.zip

Restriction Sites: SgfI-MluI

Cloning Scheme:



ACCN: NM_031305

ORF Size: 1965 bp

OTI Disclaimer: The molecular sequence of this clone aligns with the gene accession number as a point of reference only. However, individual transcript sequences of the same gene can differ through naturally occurring variations (e.g. polymorphisms), each with its own valid existence. This clone is substantially in agreement with the reference, but a complete review of all prevailing variants is recommended prior to use. [More info](#)

OTI Annotation: This clone was engineered to express the complete ORF with an expression tag. Expression varies depending on the nature of the gene.

Components: The ORF clone is ion-exchange column purified and shipped in a 2D barcoded Matrix tube containing 10ug of transfection-ready, dried plasmid DNA (reconstitute with 100 ul of water).

Reconstitution Method:

1. Centrifuge at 5,000xg for 5min.
2. Carefully open the tube and add 100ul of sterile water to dissolve the DNA.
3. Close the tube and incubate for 10 minutes at room temperature.
4. Briefly vortex the tube and then do a quick spin (less than 5000xg) to concentrate the liquid at the bottom.
5. Store the suspended plasmid at -20°C. The DNA is stable for at least one year from date of shipping when stored at -20°C.

RefSeq: [NM_031305.3](#)

RefSeq Size: 4593 bp

RefSeq ORF: 1968 bp

Locus ID: 83478

UniProt ID: [Q8N264](#)

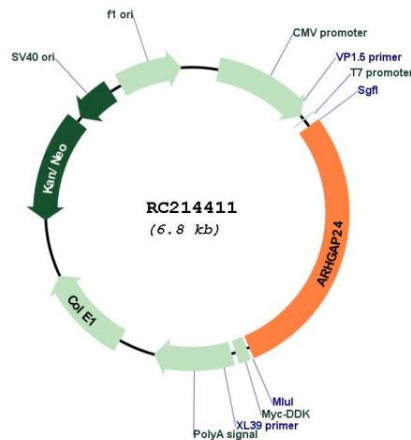
Cytogenetics: 4q21.23-q21.3

Domains: RhoGAP

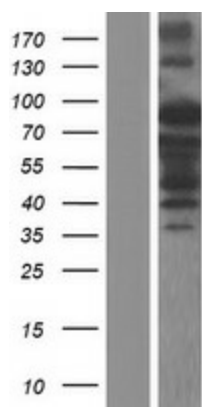
MW: 73.2 kDa

Gene Summary: This gene encodes a Rho-GTPase activating protein, which is specific for the small GTPase family member Rac. Binding of the encoded protein by filamin A targets it to sites of membrane protrusion, where it antagonizes Rac. This results in suppression of lamellae formation and promotion of retraction to regulate cell polarity. Alternative splicing results in multiple transcript variants. [provided by RefSeq, Sep 2016]

Product images:



Circular map for RC214411



Western blot validation of overexpression lysate (Cat# [LY410555]) using anti-DDK antibody (Cat# [TA50011-100]). Left: Cell lysates from untransfected HEK293T cells; Right: Cell lysates from HEK293T cells transfected with RC214411 using transfection reagent MegaTran 2.0 (Cat# [TT210002]).