

Product datasheet for **RC214409**

MIRO1 (RHOT1) (NM_001033568) Human Tagged ORF Clone

Product data:

Product Type:	Expression Plasmids
Product Name:	MIRO1 (RHOT1) (NM_001033568) Human Tagged ORF Clone
Tag:	Myc-DDK
Symbol:	MIRO1
Synonyms:	ARHT1; MIRO-1; MIRO1
Mammalian Cell Selection:	Neomycin
Vector:	pCMV6-Entry (PS100001)
E. coli Selection:	Kanamycin (25 ug/mL)



[View online »](#)

ORF Nucleotide Sequence:

>RC214409 representing NM_001033568
 Red=Cloning site Blue=ORF Green=Tags(s)

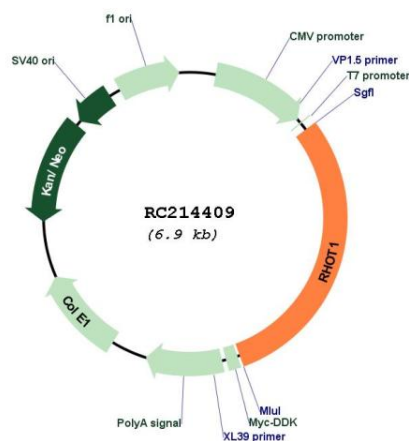
TTTTGTAATACGACTCACTATAGGGCGGCCGGAATTCGTGACTGGATCCGGTACCGAGGAGATCTGCC
 GCC**CGCATCGCC**

ATGAAGAAAGACGTGCGGATCCTGCTGGTGGGAGAACCTAGAGTTGGGAAGACATCACTGATTATGTCTC
 TGGTCAGTGAAGAATTTCCAGAAGAGGTTCTCCCGGGCAGAAGAAATCACCATTCCAGCTGATGTCAC
 CCCAGAGAGAGTTCCAACACACATTGTAGATTACTCAGAAGCAGAACAGAGTGATGAACAACTTCATCAA
 GAAATATCTCAGGCTAATGTCATCTGTATAGTGTATGCCGTTAACAAACAGCATTCTATTGATAAGGTAA
 CAAGTCGATGGATTCTCTCATAAATGAAAGAACAGACAAAGACAGCAGGCTGCCTTAATATTGGTTGG
 GAACAAATCTGATCTGGTGAATATAGTAGTATGGAGACCATCCTTCTATTATGAACAGTATACAGAA
 ATAGAAACCTGTGTGGAGTGTTCAGCGAAAAACCTGAAGAACATATCAGAGCTCTTTTATTACGCACAGA
 AAGCTGTTCTTCATCCTACAGGGCCCTGTACTGCCAGAGGAGAAGGAGATGAAACCAGCTTGATAAA
 AGCCCTTACTCGTATATTTAAAAATCTGATCAAGATAATGATGGTACTCTCAATGATGCTGAACCTAAC
 TTCTTTACAGAGGATTTGTTTCAACACTCCATTAGCTCCTCAAGCTCTGGAGGATGTCAAGAATGTAGTCA
 GAAAACATATAAGTGATGGTGTGGCTGACAGTGGGTTGACCCTGAAAGGTTTTCTTTTTACACACACT
 TTTTATCCAGAGAGGGAGACACGAACTACTTGGACTGTGCTTCGACGATTTGGTTATGATGATGACCTG
 GATTTGACACCTGAATATTTGTTCCCTCTGCTGAAAATACCTCCTGATTGCACTACTGAATTAATCATC
 ATGCATATTTATTTCTCCAAAGCACCTTGACAAGCATGATTTGGATAGAGACTGTGCTTTGTCACCTGA
 TGAGCTTAAAGATTTATTTAAAGTTTTCCCTTACATACCTTGGGGCCAGATGTGAATAACACAGTTTGT
 ACCAATGAAAGAGGCTGGATAACCTACCAGGGATTCTTTCCAGTGGACGCTCAGCACTATTTAGATG
 TACAGCGGTGCCGGAATATTTGGGCTATCTAGGCTATTCATATTGACTGAGCAAGAGTCTCAAGCTTC
 AGCTGTTACAGTGACAAGAGATAAAAAAGATAGACCTGCAGAAAAACAACTCAAAGAAATGTGTTTCA
 TGTAAATGTAATTGGAGTGAAAACTGTGGGAAAAGTGGAGTTCCTCAGGCTCTTCTTGAAGAACTTAA
 TGAGGCAGAAGAAAATTCGTGAAGATCATAAATCCTACTATGCGATTAACACTGTTTATGTATATGGACA
 AGAGAAATACTTGTGTTGCATGATATCTCAGAATCGGAATTTCTAACTGAAGCTGAAATCATTGTGAT
 GTTGTATGCCTGGTATATGATGTCAGCAATCCCAAATCCTTTGAATACTGTGCCAGGATTTTAAAGCAAC
 ACTTTATGGACAGCAGAATACCTTGCTTAATCGTAGCTGCAAAGTCAGACCTGCATGAAGTTAAACAAGA
 ATACAGTATTTACCTACTGATTTCTGCAGGAAACACAAAATGCCTCCACCACAAGCCTTCACTTGCAAT
 ACTGCTGATGCCCCAGTAAGGATATCTTTGTTAAATTGACAACAATGGCCATGTATCCAGAGGATCATT
 ACAGAGACAGACTCTCCGAGACATGGGCCACACTGATAGAATAGAGAATTTGAGAAAAATCTGGGTCTT
 TCTAAAACTGCTTTCCATGCCCGTTACGCTGTATGTGCACCTGCAACAGGTGTACATTTTGCATCTGT
 CAGAACTTCTCAACTCAGACTTGCTGCAATCTGTAAAGAACAAAATCTTCACTGCAGTTCTTAAACAGGC
 ACGTGACACAAGCTGACCTCAAGAGCTCCACGTTTTGGCTTCGAGCAAGTTTTGGTGCTACTGTTTTTG
 AGTTTTGGGCTTTGCTATGTACAAAGCATTATTGAAACAGCGA

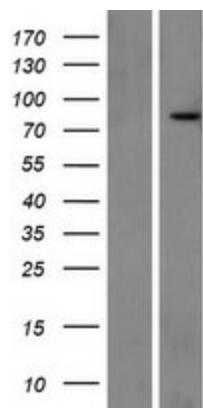
ACGCGTACGCGGGCGCTCGAGCAGAACTCATCTCAGAAGAGGATCTGGCAGCAATGATATCCTGGATT
 ACAAGGATGACGACGATAAGGTTTAA

Components:	The ORF clone is ion-exchange column purified and shipped in a 2D barcoded Matrix tube containing 10ug of transfection-ready, dried plasmid DNA (reconstitute with 100 ul of water).
Reconstitution Method:	<ol style="list-style-type: none"> 1. Centrifuge at 5,000xg for 5min. 2. Carefully open the tube and add 100ul of sterile water to dissolve the DNA. 3. Close the tube and incubate for 10 minutes at room temperature. 4. Briefly vortex the tube and then do a quick spin (less than 5000xg) to concentrate the liquid at the bottom. 5. Store the suspended plasmid at -20°C. The DNA is stable for at least one year from date of shipping when stored at -20°C.
Note:	Plasmids are not sterile. For experiments where strict sterility is required, filtration with 0.22um filter is required.
RefSeq:	<u>NM_001033568.2, NP_001028740.1</u>
RefSeq Size:	3309 bp
RefSeq ORF:	2076 bp
Locus ID:	55288
UniProt ID:	<u>Q8IXI2</u>
Cytogenetics:	17q11.2
Protein Families:	Transmembrane
MW:	79.4 kDa
Gene Summary:	Mitochondrial GTPase involved in mitochondrial trafficking. Probably involved in control of anterograde transport of mitochondria and their subcellular distribution.[UniProtKB/Swiss-Prot Function]

Product images:



Circular map for RC214409



Western blot validation of overexpression lysate (Cat# [LY422394]) using anti-DDK antibody (Cat# [TA50011-100]). Left: Cell lysates from untransfected HEK293T cells; Right: Cell lysates from HEK293T cells transfected with RC214409 using transfection reagent MegaTran 2.0 (Cat# [TT210002]).