

Product datasheet for **RC214404**

PPIL2 (NM_148176) Human Tagged ORF Clone

Product data:

Product Type:	Expression Plasmids
Product Name:	PPIL2 (NM_148176) Human Tagged ORF Clone
Tag:	Myc-DDK
Symbol:	PPIL2
Synonyms:	CYC4; Cyp-60; CYP60; hCyP-60; UBOX7
Mammalian Cell Selection:	Neomycin
Vector:	pCMV6-Entry (PS100001)
E. coli Selection:	Kanamycin (25 ug/mL)



[View online »](#)

ORF Nucleotide Sequence:

>RC214404 representing NM_148176
 Red=Cloning site Blue=ORF Green=Tags(s)

TTTTGTAATACGACTCACTATAGGGCGGCCGGAATTCGTCGACTGGATCCGGTACCGAGGAGATCTGCC
 GCC**CGCATCGCC**

ATGGGGAAGCGACAGCACCAAAGGACAAAATGTACATTACCTGTGCTGAATACACTCACTTTTATGGTG
 GCAAGAAGCCAGATCTCCACAAACAAATTTTCGTCGTTTACCTTTTGACCACTGCACTCTCTCTGCA
 GCCCTTTGTCTACCCAGTCTGCACTCCCGATGGCATCGTCTTTGACTTACTGAACATTGTTCCATGGCTT
 AAGAAGTACGGGACCAACCCAGCAATGGAGAGAAGCTGGACGGGAGTCCCTGATCAAGCTGAACCTTTT
 CCAAGAACAGTGAAGGGAAGTACCCTGCCAGTGTGTTACCGTGTTCACCAACAACCCACATCGT
 GGCTGTGAGGACGACCGGCAACGTCTACGCCTATGAGGCAGTGGAAACAGCTAAATATCAAGGCCAAGAAC
 TTCGGGACCTGTGACCGACGAGCCCTTCTCCCGGCAGGACATCATACCCTCCAGGACCCCACTAAT
 TGGACAAGTTCAATGTCTCTAATTCTATCATGTGAAGAATAACATGAAAATAATAGACCCAGATGAAGA
 GAAGGCCAAACAGGACCCGTCTTATTATCTGAAAATAACAAATGCCGAGACCCGAGAGACCTGCAGGAG
 CTCTACAAGGAGTTCAAAGGGGACGAGATTCTGGCAGCCACCATGAAGGCCCCGGAGAAGAAGAAAGTGG
 ACAAGCTGAACGCTGCCACTATTCCACAGGGAAGGTCAGCGCTTCTTACCTCCACCGCGATGGTCCC
 GGAGACCACACATGAAGCAGTGCATCGACGAGGATGTGCTGCGCTACCACTTTGTGAAGAAGAAGGGC
 TACGTGCGGTGCACACCAACAAGGGCGACCTCAACCTGGAGTGCCTGCGACCTGACACCAAAAACCT
 GCGAAAACCTCATCAGGCTTTGCAAGAAGCATTATTACGATGGCACCATCTTCCACAGATCCATCCGGAA
 CTTTGTGATCAAAGGGGGCAGCCACAGGCACAGGCACGGGTGGGAGTCACTGGGGGAAGCCCTTC
 AAAGACGAGTCCGGCCCAACCTCTCGCACAGGGCCCGGCATCCTCAGCATGGCCAACCTCCGGGCCA
 ACAGCAACAGGTCTCAATTCTTTCATCAGTTCCTGCTCCTGTGCTACCTGGACAAGAAGCATACTCTT
 TGGACGGGTTGTTGGGGCTTTGACGTACTGACGCCATGGAGAATGTGGAGAGTGACCCCAAAACTGAC
 CGCCCTAAGGAGGAGATCCGCATTGATGCCACTACAGTGTTCGTGGACCCCTATGAGGAGCCGATGCC
 AGATTGCGCAGGAGCGGAAGACACAGCTCAAGGTAGCCCGGAGACCAAAGTGAAGAGCAGCCAGCCCA
 GGCAGGGAGCCAGGGCCCCAGACCTTCCGCCAGGGCGTGGCAAGTACATCAACCCAGCAGCCACCGAG
 CAGCAGAGGAAGGCCCTCAACCACTGCCACTGTCCCATGTCCAAGAAGAAGCCAGTCCGGGTTTTGG
 GGACTTCAGCTCCTGGTAGCAGCAGGCTGCCTGATGACCAC

ACGCGTACGCGGCCGCTCGAGCAGAAACTCATCTCAGAAGAGGATCTGGCAGCAAATGATATCCTGGATT
 ACAAGGATGACGACGATAAGGTTTAA

Protein Sequence:

>RC214404 representing NM_148176
 Red=Cloning site Green=Tags(s)

MGKRQHQQDKMYITCAEYTHFYGGKKPDLPQTNFRRLPFDHCSLSLQPFVYVPCVTPDGI VFDLLNIVPWL
 KKYGTNPSNGEKLDGRSLIKLNF SKNSEGKYHCPVLFVFTNNTNTHIVAVRTTGNVYAYEAVEQLNIKAKN
 FRDLLTDEPFSRQDIITLQDPTNLDFNVSNFYHVKNMNIIDPDEEKAKQDPSYLLKNTNAETRETLQE
 LYKEFKGDEILAAATMKAPEKKKVDKLNAAHYSTGKVSASFSTAMVPETTHEAAAIDEDVLR YQFVKKKG
 YVRLHTNKGDNLNLELHCDLTPKTCENFIRLCKKHYYDGTIFHRSIRNFVIQGGDPTGTGTGGESYWGKPF
 KDEF RPNLSHTGRGILSMANSGPNSNRSQFFITFRSCAYLDKKHTIFGRVVGGFDVLTAMENVESDPKTD
 RPKEEIRIDATTVFVDPYEEADAQIAQERKTQLKVAPETKVKSSQPQAGSQGPQTFRQGVGKYINPAATE
 QQRKSPQPVPLSPCRRSPVGLGTSAPGSSRLPDDH

TRTRPLEQKLISEEDLAANDILDYKDDDDKV

Chromatograms:

https://cdn.origene.com/chromatograms/mk8103_b10.zip

Restriction Sites:

Sgfl-Mlul

Cloning Scheme:


ACCN: NM_148176

ORF Size: 1581 bp

OTI Disclaimer: The molecular sequence of this clone aligns with the gene accession number as a point of reference only. However, individual transcript sequences of the same gene can differ through naturally occurring variations (e.g. polymorphisms), each with its own valid existence. This clone is substantially in agreement with the reference, but a complete review of all prevailing variants is recommended prior to use. [More info](#)

OTI Annotation: This clone was engineered to express the complete ORF with an expression tag. Expression varies depending on the nature of the gene.

Components: The ORF clone is ion-exchange column purified and shipped in a 2D barcoded Matrix tube containing 10ug of transfection-ready, dried plasmid DNA (reconstitute with 100 ul of water).

- Reconstitution Method:**
1. Centrifuge at 5,000xg for 5min.
 2. Carefully open the tube and add 100ul of sterile water to dissolve the DNA.
 3. Close the tube and incubate for 10 minutes at room temperature.
 4. Briefly vortex the tube and then do a quick spin (less than 5000xg) to concentrate the liquid at the bottom.
 5. Store the suspended plasmid at -20°C. The DNA is stable for at least one year from date of shipping when stored at -20°C.

RefSeq: [NM_148176.2](#), [NP_680481.1](#)

RefSeq Size: 2736 bp

RefSeq ORF: 1584 bp

Locus ID: 23759

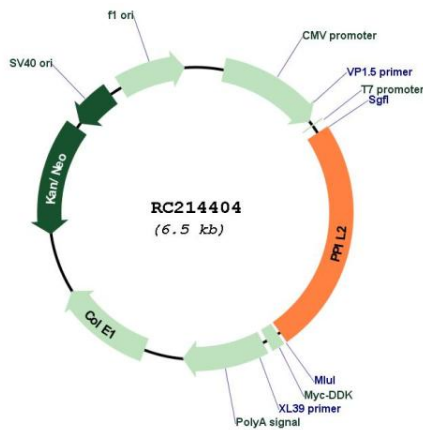
UniProt ID: [Q13356](#)

Cytogenetics: 22q11.21

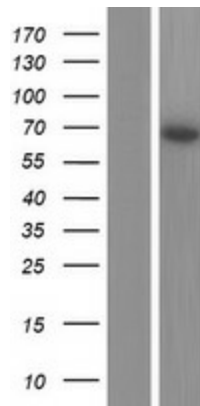
Domains: pro_isomerase
Protein Families: Druggable Genome
Protein Pathways: Ubiquitin mediated proteolysis
MW: 59.5 kDa

Gene Summary: This gene is a member of the cyclophilin family of peptidylprolyl isomerases. The cyclophilins are a highly conserved ubiquitous family, members of which play an important role in protein folding, immunosuppression by cyclosporin A, and infection of HIV-1 virions. This protein interacts with the proteinase inhibitor eglin c and is localized in the nucleus. Alternatively spliced transcript variants have been found for this gene. [provided by RefSeq, Dec 2015]

Product images:



Circular map for RC214404



Western blot validation of overexpression lysate (Cat# [LY407773]) using anti-DDK antibody (Cat# [TA50011-100]). Left: Cell lysates from untransfected HEK293T cells; Right: Cell lysates from HEK293T cells transfected with RC214404 using transfection reagent MegaTran 2.0 (Cat# [TT210002]).