

Product datasheet for RC214391

Motilin receptor (MLNR) (NM_001507) Human Tagged ORF Clone

Product data:

Product Type:	Expression Plasmids
Product Name:	Motilin receptor (MLNR) (NM_001507) Human Tagged ORF Clone
Tag:	Myc-DDK
Symbol:	Motilin receptor
Synonyms:	GPR38; MTLR1
Mammalian Cell Selection:	Neomycin
Vector:	pCMV6-Entry (PS100001)
E. coli Selection:	Kanamycin (25 ug/mL)
ORF Nucleotide Sequence:	>RC214391 representing NM_001507 Red=Cloning site Blue=ORF Green=Tags(s)

TTTTGTAATACGACTCACTATAGGGCGGCCGGAATTCGTCGACTGGATCCGGTACCGAGGAGATCTGCC
GCC**CGATCGCC**

ATGGGCAGCCCCTGGAACGGCAGCGACGGCCCCGAGGGGGCGGGGAGCCGCCGTGGCCCGCTGCCGC
CTTGCGACGAGCGCCGCTGCTCGCCCTTCCCTGGGGCGCTGGTGCCGGTGACCGCTGTGTGCCTGTG
CCTGTTTCGTCGTCGGGTGAGCGCAACGTGGTGACCGTGATGCTGATCGGGCGCTACCGGGACATGCGG
ACCACCACCAACTGTACCTGGCAGCATGGCCGTGTCGACCTACTCATCTGCTGGGCTGCCGTTCC
ACCTGTACCGCCTCTGGCGCTCGCGCCCTGGGTGTTCCGGCCGCTGCTCTGCCGCTGTCCCTCTACGT
GGCGGAGGGCTGCACCTACGCCACGCTGCTGCACATGACCGCGCTCAGCGTCGAGCGCTACCTGGCCATC
TGCCGCCCGCTCCGCGCCCGCTTTGGTCAACCGCGCCGCGTCCGCGCGCTCATCGCTGTGCTCTGGG
CCGTGGCGCTGCTCTCTGCCGTCCTTCTTGTTCCTGGTGGCGCTCGAGCAGGACCCCGGCATCTCCGT
AGTCCCGGGCCTCAATGGCACCGCGCGGATCGCCTCCTCGCCTCTCGCCTCGTCCGCGCCTCTGGCTC
TCGCGGGCGCCACCGCGTCCCCGCGTCGGGGCCGAGACCGCGGAGGCCCGCGGCGCTGTTACGCCGCG
AATGCCGCGGAGCCCCGCGCAGCTGGGCGCGTGGTGTGATGCTGTGGGTACCACCGCCTACTTCTT
CCTGCCCTTCTGTGCCTCAGCATCCTCTACGGGCTCATCGGGCGGGAGCTGTGGAGCAGCCGGCGGCC
CTGCGAGGCCCGCCGCTCGGGCGGGAGAGAGGCCACCGCGAGACCGTCCGCTCCTGCTGGTGGTGG
TTCTGGCATTATAATTTGCTGGTTGCCCTTCCAGTTGGCAGAATCATTACATAAACACGGAAGATTTC
GCGGATGATGACTTCTCTCAGTACTTTAACATCGTCGCTCTGCAACTTTTCTATCTGAGCGCATCTATC
AACCCAATCCTCTACAACCTCATTTCAAAGAAGTACAGAGCGCGGCCCTTAAACTGCTGCTCGAAAGGA
AGTCCAGGCCGAGAGGCTTCCACAGAAGCAGGGACTGCGGGGGAAGTTGCAGGGGACTGGAGGAGA
CACGGTGGGCTACACCGAGACAAGCGCTAACGTGAAGACGATGGGA

ACGCGTACGCGGCCGCTCGAGCAGAACTCATCTCAGAAGAGGATCTGGCAGCAATGATATCCTGGATT
ACAAGGATGACGACGATAAGGTTTAA



[View online »](#)

Protein Sequence: >RC214391 representing NM_001507
Red=Cloning site Green=Tags(s)

MGSPWNGSDGPEGAREPPWPALPPCDERCSPPFLGALVPVTAVCLCLFVVGVSQNVVTMLIGRYRDMR
 TTTNLYLGSMAVSDLLILLGLPFDLYRLWRSRPWFVGPLLCRLSLYVGEGETYATLLHMTALSVERYLAI
 CRPLRARLVTRRRVRALIAVLWAVALLSAGPFLFLVGVEQDGI SVVPGLNGTARIASSPLASSPPLWL
 SRAPPPSPSPGETAEEAALFSRECRPSPAQLGALRVMLWTTAYFFLPFLCLSLIYGLIGRELWSSRRP
 LRGPAAASGRERGRQTVRVLLVVVLAFLIICWLPFHVGRIIYINTEDSRMMYFSQYFNIVALQLFYLSASI
 NPILYNLISKKYRAAAFKLLLLARKSRPRGFHRSRDTAGEVAGDTGGDTVGYTETSANVKTMG

TRTRPLEQKLISEEDLAANDILDYKDDDDKV

Chromatograms: https://cdn.origene.com/chromatograms/mk6097_h12.zip

Restriction Sites: SgfI-MluI

Cloning Scheme:



* The last codon before the Stop codon of the ORF

ACCN: NM_001507

ORF Size: 1236 bp

OTI Disclaimer: The molecular sequence of this clone aligns with the gene accession number as a point of reference only. However, individual transcript sequences of the same gene can differ through naturally occurring variations (e.g. polymorphisms), each with its own valid existence. This clone is substantially in agreement with the reference, but a complete review of all prevailing variants is recommended prior to use. [More info](#)

OTI Annotation: This clone was engineered to express the complete ORF with an expression tag. Expression varies depending on the nature of the gene.

Components: The ORF clone is ion-exchange column purified and shipped in a 2D barcoded Matrix tube containing 10ug of transfection-ready, dried plasmid DNA (reconstitute with 100 ul of water).

Reconstitution Method:

1. Centrifuge at 5,000xg for 5min.
2. Carefully open the tube and add 100ul of sterile water to dissolve the DNA.
3. Close the tube and incubate for 10 minutes at room temperature.
4. Briefly vortex the tube and then do a quick spin (less than 5000xg) to concentrate the liquid at the bottom.
5. Store the suspended plasmid at -20°C. The DNA is stable for at least one year from date of shipping when stored at -20°C.

RefSeq: [NM_001507.1](#), [NP_001498.1](#)

RefSeq Size: 1239 bp

RefSeq ORF: 1239 bp

Locus ID: 2862

UniProt ID: [O43193](#)

Cytogenetics: 13q14.2

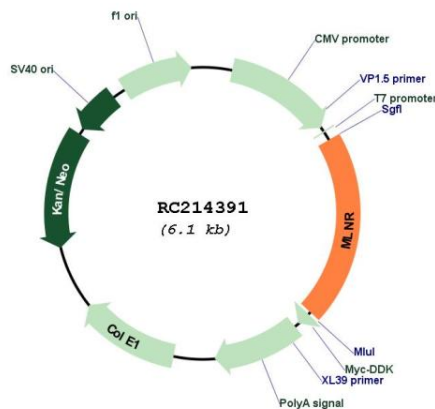
Protein Families: Druggable Genome, Transmembrane

Protein Pathways: Neuroactive ligand-receptor interaction

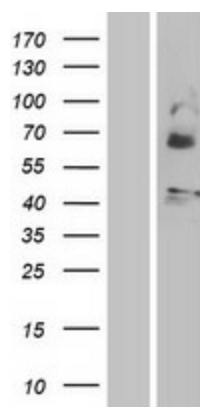
MW: 45.2 kDa

Gene Summary: Motilin is a 22 amino acid peptide hormone expressed throughout the gastrointestinal (GI) tract. The protein encoded by this gene is a motilin receptor which is a member of the G-protein coupled receptor 1 family. This member is a multi-pass transmembrane protein, and is an important therapeutic target for the treatment of hypomotility disorders. [provided by RefSeq, Aug 2011]

Product images:



Circular map for RC214391



Western blot validation of overexpression lysate (Cat# [LY400580]) using anti-DDK antibody (Cat# [TA50011-100]). Left: Cell lysates from untransfected HEK293T cells; Right: Cell lysates from HEK293T cells transfected with RC214391 using transfection reagent MegaTran 2.0 (Cat# [TT210002]).