

Product datasheet for RC214390

CCN4 (NM_080838) Human Tagged ORF Clone

Product data:

Product Type:	Expression Plasmids
Product Name:	CCN4 (NM_080838) Human Tagged ORF Clone
Tag:	Myc-DDK
Symbol:	CCN4
Synonyms:	WISP1; WISP1-OT1; WISP1-UT1; WISP1c; WISP1j; WISP1tc
Mammalian Cell Selection:	Neomycin
Vector:	pCMV6-Entry (PS100001)
E. coli Selection:	Kanamycin (25 ug/mL)
ORF Nucleotide Sequence:	>RC214390 representing NM_080838 Red=Cloning site Blue=ORF Green=Tags(s)

TTTTGTAATACGACTCACTATAGGGCGGCCGGAATTCGTCGACTGGATCCGGTACCGAGGAGATCTGCC
GCC**CGATCGCC**

ATGAGGTGGTTCCTGCCCTGGACGCTGGCAGCAGTGACAGCAGCAGCCGCCAGCACCGTCTGGCCACGG
CCCTCTCTCCAGCCCCTACGACCATGGACTTTACCCAGCTCCACTGGAGGACACCTCCTCACGCCCCCA
ATTCTGCAAGTGGCCATGTGAGTGCCCGCCATCCCACCCCGTGCCTGGGGTGCAGCCTCATCACA
GATGGCTGTGAGTGTGTAAGATGTGCGCTCAGCAGCTTGGGGACAACGACGGAGGCTGCCATCTGTG
ACCCACCGGGCCTCTACTGTGACTACAGCGGGACC GCCCGAGGTACGCAATAGGAGTGTGTGCACA
TGCTGTGGGTGAGGTGGAGGCATGGCACAGGAAGTGCATAGCCTACACAAGCCCTGGAGCCCTTGCTCC
ACCAGCTGCGGCCTGGGGTCTCCACTCGGATCTCCAATGTTAACGCCAGTGTGGCCTGAGCAAGAGA
GCCGCCTTGCAACTTGGGCCATGCGATGTGGACATCCATACACTCATTAAAGGCAGGGAAGAAGTGTCT
GGCTGTGTACCAGCCAGAGGCATCCATGAACCTCACACTTGGGGCTGCATCAGCACACGCTCCTATCAA
CCCAAGTACTGTGGAGTTTGCATGGACAACAGGTGCTGCATCCCCTACAAGTCTAAGACTATCGACGTGT
CCTTCCAGTGTCTGATGGGCTTGGCTTCTCCGCCAGGTCTATGGATTAATGCCTGCTTCTGTAACCT
GAGCTGTAGGAATCCCAATGACATCTTTGCTGACTTGAATCCTACCTGACTTCTCAGAAATTGCCAAC

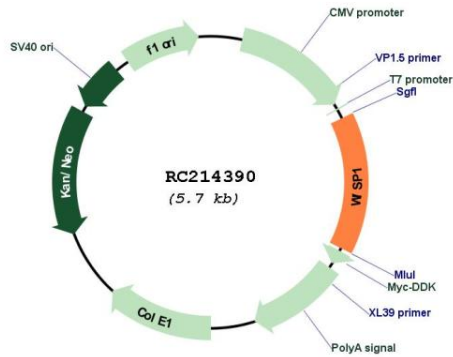
ACGCGTACGCGGCCGCTCGAGCAGAAACTCATCTCAGAAGAGGATCTGGCAGCAAATGATATCCTGGATT
ACAAGGATGACGACGATAAGGTTTAA



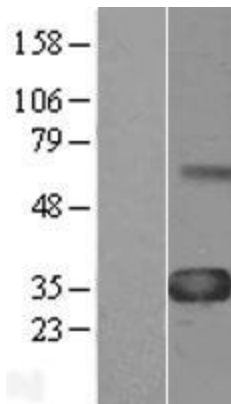
[View online »](#)

Reconstitution Method:	<ol style="list-style-type: none">1. Centrifuge at 5,000xg for 5min.2. Carefully open the tube and add 100ul of sterile water to dissolve the DNA.3. Close the tube and incubate for 10 minutes at room temperature.4. Briefly vortex the tube and then do a quick spin (less than 5000xg) to concentrate the liquid at the bottom.5. Store the suspended plasmid at -20°C. The DNA is stable for at least one year from date of shipping when stored at -20°C.
RefSeq:	NM_080838.3
RefSeq Size:	1035 bp
RefSeq ORF:	843 bp
Locus ID:	8840
UniProt ID:	O95388
Cytogenetics:	8q24.22
Protein Families:	Adult stem cells, Druggable Genome, Embryonic stem cells, ES Cell Differentiation/IPS, Secreted Protein, Stem cell relevant signaling - DSL/Notch pathway, Stem cell relevant signaling - Wnt Signaling pathway
MW:	28.3 kDa
Gene Summary:	<p>This gene encodes a member of the WNT1 inducible signaling pathway (WISP) protein subfamily, which belongs to the connective tissue growth factor (CTGF) family. WNT1 is a member of a family of cysteine-rich, glycosylated signaling proteins that mediate diverse developmental processes. The CTGF family members are characterized by four conserved cysteine-rich domains: insulin-like growth factor-binding domain, von Willebrand factor type C module, thrombospondin domain and C-terminal cystine knot-like domain. This gene may be downstream in the WNT1 signaling pathway that is relevant to malignant transformation. It is expressed at a high level in fibroblast cells, and overexpressed in colon tumors. The encoded protein binds to decorin and biglycan, two members of a family of small leucine-rich proteoglycans present in the extracellular matrix of connective tissue, and possibly prevents the inhibitory activity of decorin and biglycan in tumor cell proliferation. It also attenuates p53-mediated apoptosis in response to DNA damage through activation of the Akt kinase. It is 83% identical to the mouse protein at the amino acid level. Multiple alternatively spliced transcript variants have been identified. [provided by RefSeq, Mar 2011]</p>

Product images:



Circular map for RC214390



Western blot validation of overexpression lysate (Cat# [LY403320]) using anti-DDK antibody (Cat# [TA50011-100]). Left: Cell lysates from untransfected HEK293T cells; Right: Cell lysates from HEK293T cells transfected with RC214390 using transfection reagent MegaTran 2.0 (Cat# [TT210002]).