

Product datasheet for RC214372L3

PRSS21 (NM_144956) Human Tagged Lenti ORF Clone

Product data:

Product Type:	Expression Plasmids
Product Name:	PRSS21 (NM_144956) Human Tagged Lenti ORF Clone
Tag:	Myc-DDK
Symbol:	PRSS21
Synonyms:	ESP-1; ESP1; TEST1; TESTISIN
Mammalian Cell Selection:	Puromycin
Vector:	pLenti-C-Myc-DDK-P2A-Puro (PS100092)
E. coli Selection:	Chloramphenicol (34 ug/mL)
ORF Nucleotide Sequence:	The ORF insert of this clone is exactly the same as(RC214372).
Restriction Sites:	SgfI-MluI
Cloning Scheme:	

Cloning sites used for ORF Shuttling:



* The last codon before the Stop codon of the ORF.

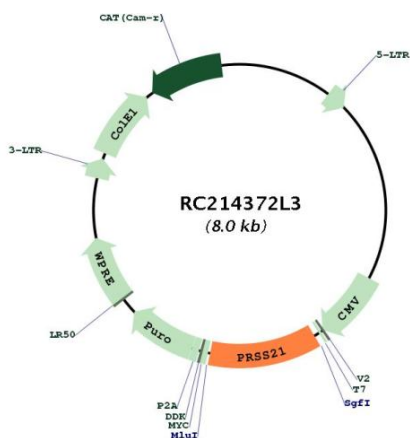
ACCN:	NM_144956
ORF Size:	942 bp



[View online »](#)

OTI Disclaimer:	The molecular sequence of this clone aligns with the gene accession number as a point of reference only. However, individual transcript sequences of the same gene can differ through naturally occurring variations (e.g. polymorphisms), each with its own valid existence. This clone is substantially in agreement with the reference, but a complete review of all prevailing variants is recommended prior to use. More info
OTI Annotation:	This clone was engineered to express the complete ORF with an expression tag. Expression varies depending on the nature of the gene.
Components:	The ORF clone is ion-exchange column purified and shipped in a 2D barcoded Matrix tube containing 10ug of transfection-ready, dried plasmid DNA (reconstitute with 100 ul of water).
Reconstitution Method:	<ol style="list-style-type: none">1. Centrifuge at 5,000xg for 5min.2. Carefully open the tube and add 100ul of sterile water to dissolve the DNA.3. Close the tube and incubate for 10 minutes at room temperature.4. Briefly vortex the tube and then do a quick spin (less than 5000xg) to concentrate the liquid at the bottom.5. Store the suspended plasmid at -20°C. The DNA is stable for at least one year from date of shipping when stored at -20°C.
RefSeq:	NM_144956.1
RefSeq Size:	1162 bp
RefSeq ORF:	939 bp
Locus ID:	10942
UniProt ID:	Q9Y6M0
Cytogenetics:	16p13.3
Protein Families:	Druggable Genome
MW:	34.9 kDa
Gene Summary:	This gene encodes a cell-surface anchored serine protease, which is a member of the trypsin family of serine proteases. The encoded protein is predicted to be active on peptide linkages involving the carboxyl group of lysine or arginine. The encoded protein localizes to the cytoplasm and the plasma membrane of premeiotic testicular germ cells and may be involved in progression of testicular tumors of germ cell origin. Alternatively spliced transcript variants encoding multiple isoforms have been observed for this gene. [provided by RefSeq, Jul 2012]

Product images:



Circular map for RC214372L3