

Product datasheet for **RC214371**

GBP6 (NM_198460) Human Tagged ORF Clone

Product data:

Product Type:	Expression Plasmids
Product Name:	GBP6 (NM_198460) Human Tagged ORF Clone
Tag:	Myc-DDK
Symbol:	GBP6
Mammalian Cell Selection:	Neomycin
Vector:	pCMV6-Entry (PS100001)
E. coli Selection:	Kanamycin (25 ug/mL)



[View online »](#)

ORF Nucleotide
Sequence:

>RC214371 ORF sequence
Red=Cloning site Blue=ORF Green=Tags(s)

TTTTGTAATACGACTCACTATAGGGCGGCCGGGAATTCGTCGACTGGATCCGGTACCGAGGAGATCTGCC
GCC**CGGATCGCC**

ATGGAATCTGACCCAAAATGTTGGCCCCGTTTGCCTGGTGAAAATAACAATGAGCAGCTATTGGTGA
ACCAGCAAGCTATACAGATTCTTGAAAAGATTTCTCAGCCAGTGGTGGTGGCCATTGTAGACTGTA
CCGTACAGGGAAATCCTACTTGTATGAACCATCTGGCAGGACAGAATCATGGCTTCCCTCTGGGCTCCACG
GTGCAGTCTGAAACCAAGGGCATCTGGATGTGGTGCCTGCCACCCATCCAAGCCAAACCACACCTGG
TCCTTCTGGACACCGAAGGTCTGGGCGATGTGAAAAGGGTGACCCTAAGAATGACTCCTGGATCTTTGC
CCTGGCTGTGCTCCTGTGCAGCACCTTTGTCTACAACAGCATGAGCACCATCAACCACAGGCCCTGGAG
CAGCTGCATTATGTGACGGAGCTCACAGAATAATTAAGGCAAAGTCTCCCAAGGCCCTGATGGAGTAG
AAGATTCCACAGAGTTTGTGAGTTTCTCCAGACTTTCTTTGGACAGTACGGGATTTCACTCTGGAGCT
GAAGTTGAACGGTCACCCTATCACAGAAGATGAATACCTGGAGAATGCCTTGAAGCTGATTCAAGGCAAT
AATCCCAGAGTTCAAACATCCAATTTTCCAGGGAGTGCATCAGGCGTTTCTTTCCAAAACGGAAGTGTT
TCGTCTTTGACCGGCCAAACAAATGACAAAAGACCTTCTAGCCAATATTGAGAAGGTGTGAGAAAAGCAACT
GGATCCAAAATCCAGGAACAAACAAACATTTTCTGTTCTTACATCTTCACTCATGCAAGAACCAAGACC
CTCAGGGAGGGAATCACAGTCACTGGGAATCGTCTGGAACTCTGGCAGTGACTTATGTAGAGGCCATCA
ACAGTGGAGCAGTGCCTTGTCTGGAGAATGCAGTGATAACTCTGGCCAGCGTGAGAAGTCCACAGACAGCTCCAG
GAGCTGCTGGACGTGCATGCGGCCTGTGAGAGGGAAGCCATTGCAATCTCATGGAGCACTCCTTCAAGG
ATGAAAATCAGGAATCCAGAAGAAGTTCATGGAACCACAATGAATAAGAAGGGGATTTCTTGTGTCGA
GAATGAAGAGTCATCTGTTCAATACTGCCAGGCTAAACTCAATGAGCTCTCAAAGGGACTAATGGAAAGT
ATCTCAGCAGGAAGTTTCTGTTCTGAGGGCACAAGCTCTACATGGAACAAAGGAAAGGATTGAAC
AGGACTATTGGCAAGTCCAGGAAAGGAGTAAAGGCAAAGAGGTCTTCCAGAGGTTCTGGAGTCACA
GATGGTGATAGAGGAATCCATCTTGCAGTCAGATAAAGCCCTCACTGATAGAGAGAAGGCAGTAGCAGTG
GATCGGGCCAAGAAGGAGGCAGCTGAGAAGGAACAGGAACTTTTAAAACAGAAATTACAGGAGCAGCAGC
AACAGATGGAGGCTCAAGTTAAGAGTCGCAAGGAAAACATAGCCCACTGAAGGAGAAGCTGCAGATGGA
GAGAGAACACCTACTGAGAGAGCAGATTATGATGTTGGAGCACACGCAGAAGTCCAAAATGATTGGCTT
CATGAAGGATTTAAGAAGAAGTATGAGGAGATGAATGCAGAGATAAGTCAATTTAAACGTATGATTGATA
CTACAAAAAATGATGATACTCCCTGGATTGCACGAACCTTGGACAACCTTGCCGATGAGCTAACTGCAAT
ATTGTCTGCTCCTGCTAAATTAATTGGTCATGGTGCAAAGGTGTGAGCTCACTTTAAAAAGCATAAG
CTCCCTTT

ACGCGTACGCGGCCGCTCGAGCAGAAACTCATCTCAGAAGAGGATCTGGCAGCAATGATATCCTGGATT
ACAAGGATGACGACGATAAGGTTTAA

Protein Sequence: >RC214371 protein sequence
Red=Cloning site Green=Tags(s)

MESGPKMLAPVCLVENNNEQLLVNQQAIIQILEKISQPVVVVAIVGLYRTGKSYLMNHLAQNHGFPPLGST
 VQSETKGIWMCVPHPSKPNHTLVLLDTEGLDVEKGDPKNDSWIFALAVLLCSTFVYNSMSTINHQALE
 QLHYVTELTTELKAKSSPRPDGVEDSTEFVSFFPDFLWTVRDFTELEKLNHPI TEDEYLENALKLIQGN
 NPRVQTSNFPRECIRRF FPKRCKFVDFRPTNDKDLLANIEKVSEKQLDPKFQEQTNIFCSYIFTHARTKT
 LREGITVTGNRLGTLAVTYVEAINSGAVPCLENAVITLAQRENSAAVQRASDYYSQQAQRVKFPTDTLQ
 ELLDVHAACEREAIAIFMEHSFKDENQEFQKFMETTMNKKGDFLLQNEESSVQYQAKLNELSKGLMES
 ISAGSFSVPGGHKLYMETKERIEQDYWQVPRKGVKAKEVFQRFLESQMVIEESILQSDKALTDREKAVAV
 DRAKKEAAEKEQELLKQKLQEQQQMEAQVKSARKENIAQLKEKLMEREHLLREQIMMLEHTQKVQNDWL
 HEGFKKYEEMNAEISQFKRMIDTTKNDDTPWIARTLDNLADEL TAIL SAPAKLIGHGVKGVSSLFKKHK
 LPF

TRTRPLEQKLISEEDLAANDILDYKDDDDKV

Chromatograms: https://cdn.origene.com/chromatograms/mk6670_e06.zip

Restriction Sites: SgfI-MluI

Cloning Scheme:



ACCN: NM_198460

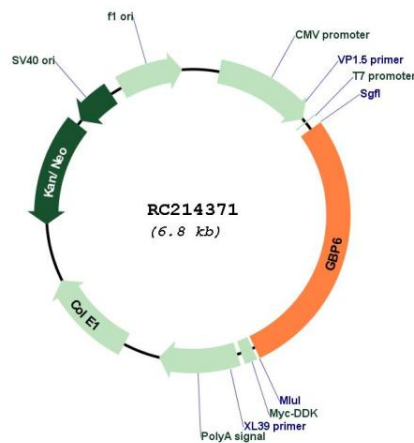
ORF Size: 1899 bp

OTI Disclaimer: The molecular sequence of this clone aligns with the gene accession number as a point of reference only. However, individual transcript sequences of the same gene can differ through naturally occurring variations (e.g. polymorphisms), each with its own valid existence. This clone is substantially in agreement with the reference, but a complete review of all prevailing variants is recommended prior to use. [More info](#)

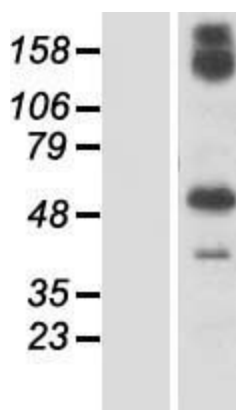
OTI Annotation: This clone was engineered to express the complete ORF with an expression tag. Expression varies depending on the nature of the gene.

Components:	The ORF clone is ion-exchange column purified and shipped in a 2D barcoded Matrix tube containing 10ug of transfection-ready, dried plasmid DNA (reconstitute with 100 ul of water).
Reconstitution Method:	<ol style="list-style-type: none"> 1. Centrifuge at 5,000xg for 5min. 2. Carefully open the tube and add 100ul of sterile water to dissolve the DNA. 3. Close the tube and incubate for 10 minutes at room temperature. 4. Briefly vortex the tube and then do a quick spin (less than 5000xg) to concentrate the liquid at the bottom. 5. Store the suspended plasmid at -20°C. The DNA is stable for at least one year from date of shipping when stored at -20°C.
RefSeq:	<u>NM_198460.3</u>
RefSeq Size:	4867 bp
RefSeq ORF:	1902 bp
Locus ID:	163351
UniProt ID:	<u>Q6ZN66</u>
Cytogenetics:	1p22.2
MW:	72.4 kDa
Gene Summary:	Guanylate-binding proteins, such as GBP6, are induced by interferon and hydrolyze GTP to both GDP and GMP (Olszewski et al., 2006 [PubMed 16689661]).[supplied by OMIM, Dec 2008]

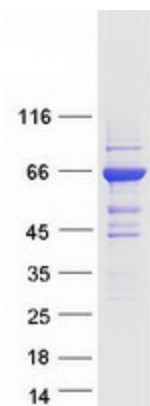
Product images:



Circular map for RC214371



Western blot validation of overexpression lysate (Cat# [LY404942]) using anti-DDK antibody (Cat# [TA50011-100]). Left: Cell lysates from untransfected HEK293T cells; Right: Cell lysates from HEK293T cells transfected with RC214371 using transfection reagent MegaTran 2.0 (Cat# [TT210002]).



Coomassie blue staining of purified GBP6 protein (Cat# [TP314371]). The protein was produced from HEK293T cells transfected with GBP6 cDNA clone (Cat# RC214371) using MegaTran 2.0 (Cat# [TT210002]).