

Product datasheet for **RC214368**

CHES1 (FOXN3) (NM_001085471) Human Tagged ORF Clone

Product data:

Product Type:	Expression Plasmids
Product Name:	CHES1 (FOXN3) (NM_001085471) Human Tagged ORF Clone
Tag:	Myc-DDK
Symbol:	CHES1
Synonyms:	C14orf116; CHES1; PRO1635
Mammalian Cell Selection:	Neomycin
Vector:	pCMV6-Entry (PS100001)
E. coli Selection:	Kanamycin (25 ug/mL)



[View online »](#)

ORF Nucleotide Sequence:

>RC214368 representing NM_001085471
 Red=Cloning site Blue=ORF Green=Tags(s)

TTTTGTAATACGACTCACTATAGGGCGGCCGGAATTCGTCGACTGGATCCGGTACCGAGGAGATCTGCC
 GCC**CGCATCGCC**

ATGGGTCCAGTCATGCCTCCCAGTAAGAAGCCAGAAAGCTCAGGAATTAGTGTCTCCAGTGGACTGAGTC
 AGTGTTACGGGGCAGCGTTTTCTCCAAGGCCCTTCAGGAAGACGATGACCTCGACTTTTCTCTGCCTGA
 CATCCGATTAGAAGAGGGGGCCATGGAAGATGAAGAGCTGACCAACCTGAACTGGCTGCACGAGAGCAAG
 AACTTGCTGAAGAGCTTTGGGGAGTCGGTCTCAGGAGTGTACGCCCCGTCAGGACCTGGACGATGACA
 CCCCCCATCCCCTGCCACTCTGACATGCCCTACGATGCCAGGCAGAACCCCAACTGCAAACCCCCTA
 CTCCTTCAGTGCCTCATATTTATGGCCATCGAGGACTCTCCAACCAAGCGCCTGCCAGTGAAGGATATC
 TACAACTGGATCTTGAACATTTTCCGTATTTGCAAATGCACCTACTGGGTGGAAAACTCAGTGAAGAC
 ACAATTTATCATTGAATAAGTGTTTAAGAAAGTGACAAAGAGAGGAGTCAAGTATTGGGAAAGGGTC
 GTTGTGGTGCATAGACCCAGAGTATAGACAAAATCTAATTCAGGCTTTGAAAAAGACACCTTATCAGGCA
 CACCCACACGTGTTCAATACACCTCCCACCTGTCTCAGGCATATCAAAGCACATCAGGTCACCCATCT
 GGCCGGGCGAGTACCTTCTCAAGAGAAATGGAGCCCTTCTCAAGATCCTGACATTGATGCTGCCAGTGC
 CATGATGCTTTTGAATACTCCCCCTGAGATACAAGCAGTTTTCTCCAGGAGTATCAAAAATGGAGCG
 CGGGTCTGAGCCGAGGGCTGTTTCTGGCGTGCAGGCGCTGCCAATCACTCCCATTGGGGTGACAGCGG
 CCATGAGGAATGGCATCACACGTCGCCGATGCCGACTGAGAGTGAAGTCCATCTTGTGGCTCCCCAGTGGT
 CAGCGGAGACCCCAAGGAGGATCACAACACAGCAGTCCCAAGTCTCCAACGCCGAGCACCTCGCCC
 ACCAGCGACTCCATCTCCTCCTCCTCCTCAGCCGACGACCACTATGAGTTTGCCACCAAGGGGAGCC
 AGGAGGGCAGCGAGGGCAGCGAGGGGAGCTTCCGGAGCCACGAGAGCCCCAGCAGACCGGAAGAGGACGA
 CAGGAAGCACAGCCAGAAGGAGCCCAAGGATTCTCTGGGGGACAGCGGGTACGCATCCCAGCACAAGAAG
 CGCCAGCACTTCGCCAAGGCCAGGAAGTCCCCAGCGACACACTGCCCTCAAAAAGAGAGCGACCCGAAA
 AGCCCCCGAGAGCGATGATGAGGAGTAAAAGAGCGGCAGGGTCCCTCCTGCACTTAGCAGGGATCCG
 GTCCTGTTGAATAACATCACCAATCGGACGGCAAAGGGGAGCAAAGAGCAAAGGAAACCAAAAAAT

ACGCGTACGCGGCCGCTCGAGCAGAAACTCATCTCAGAAGAGGATCTGGCAGCAAATGATATCTGGATT
 ACAAGGATGACGACGATAAGGTTTAA

Protein Sequence:

>RC214368 representing NM_001085471
 Red=Cloning site Green=Tags(s)

MGPVMPSSKPPSSGISVSSGLSQCYGSGFSKALQEDDDLDFSLPDIRLEEGAMEDEELTNLNLHESK
 NLLKSFGEVLSVSPVQDLDDTTPSPAHSMPYDARQNPNCPPYFSCLIFMAIEDSPTKRLPVKDI
 YNWILEHFYPYFANAPTGWKNSVRHNLNLKCFKVKERSQSIGKSLWCIDPEYRQNLIQALKKTPYHP
 HPHVFNTPPTCPQAYQSTSGPPIWPGSTFFKRNALLQDPDIDAASAMMLLNTPEIQAGFPPGVIQNGA
 RVLNRGLFPGVRLPITPIGVTAAMRNIGITSCMRTESEPSGSPVVSVDPKEDHNYSSAKSSNARSTSP
 TSDSISSSSSADHYEFATKGSQEGSEGSFRSHESPSDTEEDDRKHSQKEPKDSLGDSSGYASQHKK
 RQHFARKRVPSDTLPLKKRTEKPPESDDEEMKEAAGSLLHLAGIRSLNITNRTAKGQKEQKETTAN

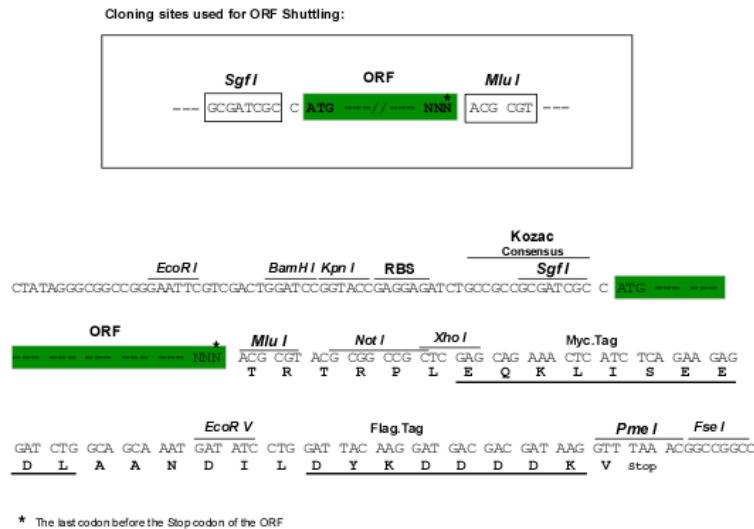
TRTRPLEQKLISEEDLAANDILDYKDDDDKV

Chromatograms:

https://cdn.origene.com/chromatograms/mk8063_a06.zip

Restriction Sites:

Sgfl-Mlul

Cloning Scheme:


ACCN: NM_001085471

ORF Size: 1470 bp

OTI Disclaimer: The molecular sequence of this clone aligns with the gene accession number as a point of reference only. However, individual transcript sequences of the same gene can differ through naturally occurring variations (e.g. polymorphisms), each with its own valid existence. This clone is substantially in agreement with the reference, but a complete review of all prevailing variants is recommended prior to use. [More info](#)

OTI Annotation: This clone was engineered to express the complete ORF with an expression tag. Expression varies depending on the nature of the gene.

Components: The ORF clone is ion-exchange column purified and shipped in a 2D barcoded Matrix tube containing 10ug of transfection-ready, dried plasmid DNA (reconstitute with 100 ul of water).

Reconstitution Method:

1. Centrifuge at 5,000xg for 5min.
2. Carefully open the tube and add 100ul of sterile water to dissolve the DNA.
3. Close the tube and incubate for 10 minutes at room temperature.
4. Briefly vortex the tube and then do a quick spin (less than 5000xg) to concentrate the liquid at the bottom.
5. Store the suspended plasmid at -20°C. The DNA is stable for at least one year from date of shipping when stored at -20°C.

RefSeq: [NM_001085471.2](#)

RefSeq Size: 7856 bp

RefSeq ORF: 1473 bp

Locus ID: 1112

UniProt ID: [O00409](#)

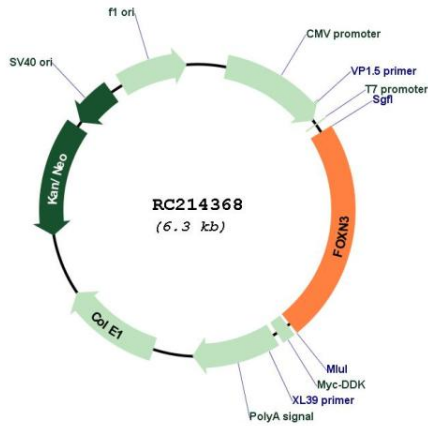
Cytogenetics: 14q31.3-q32.11

Protein Families: Druggable Genome, Transcription Factors

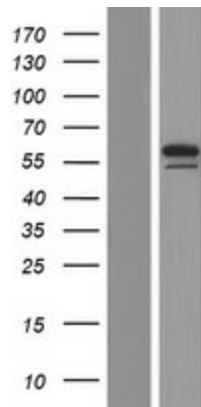
MW: 53.7 kDa

Gene Summary: This gene is a member of the forkhead/winged helix transcription factor family. Checkpoints are eukaryotic DNA damage-inducible cell cycle arrests at G1 and G2. Checkpoint suppressor 1 suppresses multiple yeast checkpoint mutations including *mec1*, *rad9*, *rad53* and *dun1* by activating a MEC1-independent checkpoint pathway. Alternative splicing is observed at the locus, resulting in distinct isoforms. [provided by RefSeq, Jul 2008]

Product images:



Circular map for RC214368



Western blot validation of overexpression lysate (Cat# [LY421319]) using anti-DDK antibody (Cat# [TA50011-100]). Left: Cell lysates from untransfected HEK293T cells; Right: Cell lysates from HEK293T cells transfected with RC214368 using transfection reagent MegaTran 2.0 (Cat# [TT210002]).