

Product datasheet for RC214366

TLL2 (NM_012465) Human Tagged ORF Clone

Product data:

Product Type:	Expression Plasmids
Product Name:	TLL2 (NM_012465) Human Tagged ORF Clone
Tag:	Myc-DDK
Symbol:	TLL2
Mammalian Cell Selection:	Neomycin
Vector:	pCMV6-Entry (PS100001)
E. coli Selection:	Kanamycin (25 ug/mL)
ORF Nucleotide Sequence:	>RC214366 representing NM_012465 Red=Cloning site Blue=ORF Green=Tags(s)

TTTTGTAATACGACTCACTATAGGGCGGCCGGGAATTCGTCGACTGGATCCGGTACCGAGGAGATCTGCC
GCC**CGATCGCC**

ATGCCCGGGCGACTGCACTTGGGGCCCTGGTGTCACTGCTGCTGCTGCTGCCGCTGCCTCGCGGCCCG
GGGACTCGGGGAGCGCCCGGACGCCACCAGACTACTCAGAGCTGGACGGCGAGGAGGGCACGGAGCA
GCAGCTGGAGCATTACCACGACCCTTGCAAAGCCGCTGTCTTTGGGGAGACATTGCCTTAGATGAAGAT
GACTTGAAGCTGTTTACATTGACAAAGCCAGAGACTGGACCAAGCAGACAGTGGGGCAACAGGACACA
GCACAGTGGGCTTGAAGAGCAGGCATCTGAGAGCAGCCAGACACCACAGCCATGGACTGGCACCAA
GGAAGCTGGAAAGGATGGCCGGGAGAATACCACACTCCTGCACAGCCCTGGGACCTTGCATGCCGACGCC
AAGACCTTCTCTCCCGGGTCCGAAGAGCCACAACCTCAAGGACAGAGAGGATATGGCCTGGAGGAGTCA
TCCCTACGTCATTGGAGGAACTTCACTGGGAGCCAGAGGGCCATTTTAAAGCAGGCCATGAGACTG
GGAGAAGCACACCTGTGTGACCTTCATAGAAAGGACGGATGAGGAAAGCTTTATTGTATTAGATTACAGA
ACCTGTGGCTGTTGCTCCTATGTTGGGCGCCGAGGAGGAGGCCACAGGCCATATCCATTGGGAAGAACT
GTGACAAGTTTGGCATTGTGGCTCACGAGCTGGGCCATGTGGTTGGGTTTTGGCATGAACACACCCGGCC
AGACAGAGACCAACATGCACCATCATCAGGGAAAACATCCAGCCAGGTCAGGAGTATAATTTCTTAAAA
ATGGAAGCTGGGAAGTGAGCTCTCTGGGAGAGACATACGACTTTGACAGCATCATGCACTACGCCCGGA
ACACCTTCTCAAGAGGAGTTTTCTTAGACACCATCCTTCCCGTCAAGATGACAATGGCGTCAGGCCAAC
CATTGGCCAGCGCTGCCGCTCAGTCAGGGAGACATAGCTCAAGCCCGGAAGCTGTACAAATGCCACGG
TGTGGGGAGACCCTGCAGGACACAACGGGAAACTTTTCTGCACCTGGTTTCCCAAATGGGTACCCATCTT
ACTCCCCTGCGTCTGGAGGATCTCGGTCACCCAGGGGAAAAGATCGTATTAACCTTACATCCATGGA
TTTGTAAAAGCCGACTGTGCTGGTATGATTACGTGGAGGTCCGGGATGGTTACTGGAGAAAAGCCCC
CTTTTGGCAGTTTTTGTGGCGATAAGATCCCGGAGCCCTCGTCTCCACGGACAGCCGGCTCTGGGTGG
AGTTCGCAGCAGCAGCAACATCTTGGCAAGGGCTTCTTTCAGCGTACGAAGTACCTCGGGGGGAGA
CATGAACAAAGATGCCGGTCAGATTCATCTCCCAACTATCCGGATGACTACAGACCTTCCAAGGAATGT
GTCTGGAGGATTACGGTTTCAGAGGGTTTTACGTGGGACTTACCTTCCAAGCTTTTGGATTGAAAGGC
ACGACAGCTGTGCATATGACTACCTGGAAGTCCGGGATGGCCCCACGGAAGAGAGTGCCCTGATCGGCCA



[View online »](#)

CTTTTGTGGCTATGAGAAGCCGGAGGATGTGAAATCGAGCTCCAACAGACTGTGGATGAAGTTTGTGTCC
 GATGGCTCTATCAATAAAGCGGGCTTTGCAGCCAATTTTTTCAAGGAGGTGGATGAGTGTTCCTGGCCAG
 ATCACGGCGGGTGCAGCATCGCTGTGTGAACACGCTGGGCAGCTACAAGTGTGCCTGTGACCCTGGCTA
 CGAGCTGGCCCGCGATAAGAAGATGTGTGAAGTGGCCTGTGGCGGTTTCATTACCAAGCTGAATGGAACC
 ATCACCAGCCCTGGTGGCCGAAGGAGTATCCACAAAACAAAACCTGTGTCTGGCAGGTGGTGGCCCCCG
 CTCAGTACCGGATCTCCCTTCAGTTTGAAGTGTTTGAACTGGAAGGCAATGACGTCTGTAAGTACGACTT
 TGTAGAGGTGCGCAGCGGCTGTCCCCGACGCCAAGCTGCACGGCAGGTTCTGCGGCTGTGAGACGCGG
 GAGGTATCACCTCGCAGAGCAACAACATGCGCGTGGAGTTCAAGTCCGACAACACCGTCTCCAAGCGCG
 GCTTCAGGGCCCACTTCTCTCAGATAAGGACGAGTGTGCCAAGGACAACGGCGGGTGTGAGCATGAGTG
 CGTCAACACCTTCGGGAGCTACCTGTGCAGGTGCAGAAACGGCTACTGGCTCCACGAGAATGGGCATGAC
 TGCAAAGAGGCTGGCTGTGCACACAAGATCAGCAGTGTGGAGGGGACCCTGGCGAGCCCCAACTGGCCTG
 ACAAATACCCAGCCGGAGGGAGTGTACCTGGAACATCTCTCGACTGCAGGCCACAGAGTGAAACTCAC
 CTTTAATGAGTTTGTGATCGAGCAGCACCAGGAATGTGCCTATGACCACCTGGAATGTATGACGGGCCG
 GACAGCCTGGCCCCATTCTGGCCGTTTCTGCGGCAGCAAGAAACCAGACCCACGGTGGCTTCCGGCA
 GCAGTATGTTTCTCAGGTTTTATTCGGATGCCTCAGTGCAGAGGAAAGGCTTCCAGCAGTGCACAGCAC
 AGAGTGCAGGGGAGGCTGAAGGCTGAAGTGCAGACCAAGAGCTCTATTCACCGCCAGTTTGGGGAC
 AACAACTACCCGAGCGAGGCCCGCTGTGACTGGGTGATCGTGGCAGAGGACGGCTACGGCGTGGAGCTGA
 CATTCCGGACCTTTGAGGTTGAGGAGGAGGCCGACTGCGGCTACGACTACATGGAAGCCTACGACGGCTA
 CGACAGCTCAGCGCCAGGCTCGGCCGCTTCTGTGGCTCTGGCCATTAGAAGAAATCTACTCTGCAGGT
 GATTCCCTGATGATTGATTCCGCACAGATGACACCATCAACAAGAAAGGCTTTCATGCCCGATACACCA
 GCACCAAGTTCAGGATGCCCTGCATGAAGAAA

ACGCGTACGCGGCGGCTCGAGCAGAAACTCATCTCAGAAGAGGATCTGGCAGCAAATGATATCCTGGATT
 ACAAGGATGACGACGATAAGGTTTAA

Protein Sequence:

>RC214366 representing NM_012465
 Red=Cloning site Green=Tags(s)

MPRATALGALVSLLLLPLPRGAGGLGERPDATADYSELDEEGTEQQLEHYHDPCKAAVFWGDIALDED
 DLKLFHIDKARDWTKQTVGATGHSTGGLEEQASESSPDTTAMDTGTKEAGKDGRENTTLLHSPGTLHAAA
 KTFSPRVRRTTSRTERIWPGGVIPPYVIGNFTGSQRAIFKQAMRHWEKHTCVTFIERTDEESFIVFSYR
 TCGCCSYVGRGGGPQAIISGKNCDFGIVAHELGHVVGFWHEHTRPDRDQHVTTIIRENIQPGQEYNFLK
 MEAGEVSSLGETYDFDSIMHYARNTFSRGVFLDTILPRQDDNGVRPTIGQRVRLSQGDIAQARKLYKCPA
 CGETLQDTTGNFSAPGFPNGYPSYSHCVWRISVTPGKEIVLNFTSMDLFSRLCWYDYVEVRDGYWRKAP
 LLGRFCGDKIPEPLVSTDSRLWVEFRSSNILGKGFFAAYEATCGGDMNKDAGQIQSPNYPDDYRPSKEC
 VWRITVSEGFHVGLTFQAFEIERHDSYDYLEVRDGPTEESALIGHFCGYEKPEDVKSSNRLWMKFVS
 DGSINKAGFAANFFKEVDECSWPDHGGCEHRCVNTLGSYKACDPGYELAADKKMCEVACGGFITKLNGT
 ITSPGWPKYPTNKNCVWQVVAQAQYRISLQFEVFELEGNDVCKYDFVEVRSGLSPDAKLHGRFCGSETP
 EVITSQSNMRVEFKSDNTVSKRGFRAHFFSDKDECAKDNGGCQHECVNTFGSYLCRCRNGYWLHENGHD
 CKEAGCAHKISSVEGTLASPNWPKYPSRRECTWNISSTAGHRVKLTFNEFEIEQHQECAYDHLEMYDGP
 DSLAPILGRFCGSKKPDPTVASGSSMFLRFYSASVQRKGFQAVHSTECGRLKAQVQTKELYSHAQFGD
 NNPSEARCDWVIVAEDGYGVELTFRTFEVEEEADCGYDYMEAYDGYDSSAPRLGRFCGSGPLEEISYAS
 DSLMIRFRTDDTINKKGFHARYSTKFDALHMKK

TRTRPLEQKLISEEDLAANDILDYKDDDDKV

Chromatograms:

https://cdn.origene.com/chromatograms/mk6168_h10.zip

Restriction Sites:

Sgfl-MluI

Cloning Scheme:


ACCN: NM_012465

ORF Size: 3045 bp

OTI Disclaimer: The molecular sequence of this clone aligns with the gene accession number as a point of reference only. However, individual transcript sequences of the same gene can differ through naturally occurring variations (e.g. polymorphisms), each with its own valid existence. This clone is substantially in agreement with the reference, but a complete review of all prevailing variants is recommended prior to use. [More info](#)

OTI Annotation: This clone was engineered to express the complete ORF with an expression tag. Expression varies depending on the nature of the gene.

Components: The ORF clone is ion-exchange column purified and shipped in a 2D barcoded Matrix tube containing 10ug of transfection-ready, dried plasmid DNA (reconstitute with 100 ul of water).

Reconstitution Method:

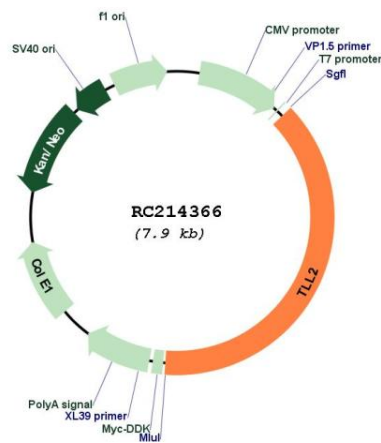
1. Centrifuge at 5,000xg for 5min.
2. Carefully open the tube and add 100ul of sterile water to dissolve the DNA.
3. Close the tube and incubate for 10 minutes at room temperature.
4. Briefly vortex the tube and then do a quick spin (less than 5000xg) to concentrate the liquid at the bottom.
5. Store the suspended plasmid at -20°C. The DNA is stable for at least one year from date of shipping when stored at -20°C.

RefSeq: [NM_012465.4](#)

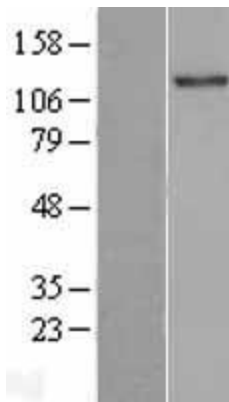
RefSeq Size: 6753 bp

RefSeq ORF: 3048 bp

Locus ID: 7093
UniProt ID: [Q9Y6L7](#)
Cytogenetics: 10q24.1
Domains: CUB, Astacin, EGF_CA, ZnMc, EGF, EGF
Protein Families: Druggable Genome, Secreted Protein
MW: 113.4 kDa
Gene Summary: This gene encodes an astacin-like zinc-dependent metalloprotease and is a subfamily member of the metzincin family. Unlike other family members, a similar protein in mice does not cleave procollagen C-propeptides or chordin. [provided by RefSeq, Jul 2008]

Product images:


Circular map for RC214366



Western blot validation of overexpression lysate (Cat# [LY402218]) using anti-DDK antibody (Cat# [TA50011-100]). Left: Cell lysates from untransfected HEK293T cells; Right: Cell lysates from HEK293T cells transfected with RC214366 using transfection reagent MegaTran 2.0 (Cat# [TT210002]).