

Product datasheet for **RC214365**

BSX (NM_001098169) Human Tagged ORF Clone

Product data:

Product Type:	Expression Plasmids
Product Name:	BSX (NM_001098169) Human Tagged ORF Clone
Tag:	Myc-DDK
Symbol:	BSX
Synonyms:	BSX1
Mammalian Cell Selection:	Neomycin
Vector:	pCMV6-Entry (PS100001)
E. coli Selection:	Kanamycin (25 ug/mL)
ORF Nucleotide Sequence:	>RC214365 representing NM_001098169 Red=Cloning site Blue=ORF Green=Tags(s)

TTTTGTAATACGACTCACTATAGGGCGGCCGGAATTCGTCGACTGGATCCGGTACCGAGGAGATCTGCC
GCC**CGATCGCC**

ATGAATCTCAACTTCACCTCTCCTCTACACCCGGCGTCTTCTCAGAGGCCACATCCTTCTTCATCGAGG
ACATCCTGCTGCACAAGCCCAAGCCGCTGAGAGAGGTGGCCCCAGACCATTTCGCCAGCTCTCTGGCCTC
TCGGGTGCCTCTGCTAGACTATGGCTACCCCTCATGCCACACCCACCCTTTGGCTCCTCAGCCCAT
CACCTCTGCATAAGGGAGACCACCATCATCCTTATTTCTCACCACCTCGGGGATGCCAGTCCCAGCGC
TGTTCCCGCACCCGACGACGCGGAGCTGCCGGGAAGCACTGCCGCCGCCGAAAGCCCGCACGGTTTT
CTCTGACTCGCAGCTCTCGGGCTTGGAGAAGAGGTTTCGAGATCCAGCGCTACCTGTCCACGCCAGAACGA
GTGGAGCTGGCCACGGCCCTCAGCCTGTCCGAGACGCAGGTGAAAACGTGGTTCCAGAACCGCGGATGA
AGCATAAAAAGCAACTGCGGAAAAGCAAGACGAACCCAAAGCACCAGACGGGCCAGAAAGCCCCGAGGG
CAGCCCCCGCGGTTTCAGAGGCCGCCACCGCCCGGAGGCTCGGCTGAGCCTGCCCGCGGTCCCTTCGTG
CTGACCGAGCCAGAGGACGAGGTGGACATTGGAGACGAGGGGAGCTGGGCTCAGGGCCGCACGTGCTC

ACGCGTACGCGGCCGCTCGAGCAGAACTCATCTCAGAAGAGGATCTGGCAGCAAATGATATCCTGGATT
ACAAGGATGACGACGATAAGGTTTAA



[View online »](#)

Protein Sequence: >RC214365 representing NM_001098169
 Red=Cloning site Green=Tags(s)

MNLNFTSPLHPASSQRPTSFFIEDILLHKPKPLREVAPDHFASSLASRVPLLDYGYPLMPTPTLLAPHAH
 HPLHKGDHHPYFLTTSMPVPALFPHQHAELPGKHCRRRKARTVFSDSLGLLEKRFIEIQRYLSTPER
 VELATALSLSETQVKTWFQNRMRKHKQLRKSQDEPKAPDGPESPEGSPRGSEATAAEARLSLPAGPFV
 LTEPEDEVDIGDEGELGSGPHVL

TRTRPLEQKLISEEDLAANDILDYKDDDDKV

Chromatograms: https://cdn.origene.com/chromatograms/mk8030_e10.zip

Restriction Sites: SgfI-MluI

Cloning Scheme:



ACCN: NM_001098169

ORF Size: 699 bp

OTI Disclaimer: The molecular sequence of this clone aligns with the gene accession number as a point of reference only. However, individual transcript sequences of the same gene can differ through naturally occurring variations (e.g. polymorphisms), each with its own valid existence. This clone is substantially in agreement with the reference, but a complete review of all prevailing variants is recommended prior to use. [More info](#)

OTI Annotation: This clone was engineered to express the complete ORF with an expression tag. Expression varies depending on the nature of the gene.

Components: The ORF clone is ion-exchange column purified and shipped in a 2D barcoded Matrix tube containing 10ug of transfection-ready, dried plasmid DNA (reconstitute with 100 ul of water).

Reconstitution Method:

1. Centrifuge at 5,000xg for 5min.
2. Carefully open the tube and add 100ul of sterile water to dissolve the DNA.
3. Close the tube and incubate for 10 minutes at room temperature.
4. Briefly vortex the tube and then do a quick spin (less than 5000xg) to concentrate the liquid at the bottom.
5. Store the suspended plasmid at -20°C. The DNA is stable for at least one year from date of shipping when stored at -20°C.

Note: Plasmids are not sterile. For experiments where strict sterility is required, filtration with 0.22um filter is required.

RefSeq: NM_001098169.2

RefSeq Size: 702 bp

RefSeq ORF: 702 bp

Locus ID: 390259

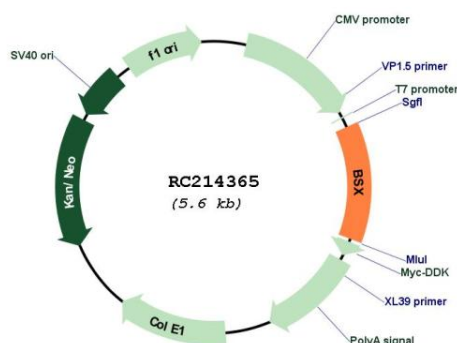
UniProt ID: Q3C1V8

Cytogenetics: 11q24.1

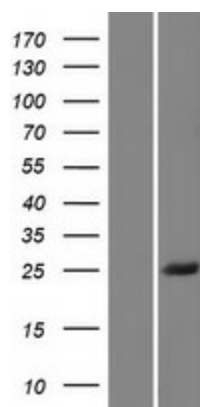
MW: 25.8 kDa

Gene Summary: DNA binding protein that function as transcriptional activator. Is essential for normal postnatal growth and nursing. Is an essential factor for neuronal neuropeptide Y and agouti-related peptide function and locomotory behavior in the control of energy balance (By similarity).[UniProtKB/Swiss-Prot Function]

Product images:



Circular map for RC214365



Western blot validation of overexpression lysate (Cat# [LY420545]) using anti-DDK antibody (Cat# [TA50011-100]). Left: Cell lysates from untransfected HEK293T cells; Right: Cell lysates from HEK293T cells transfected with RC214365 using transfection reagent MegaTran 2.0 (Cat# [TT210002]).