


Product datasheet for **RC214358L2**

MEKK1 (MAP3K1) (NM_005921) Human Tagged Lenti ORF Clone

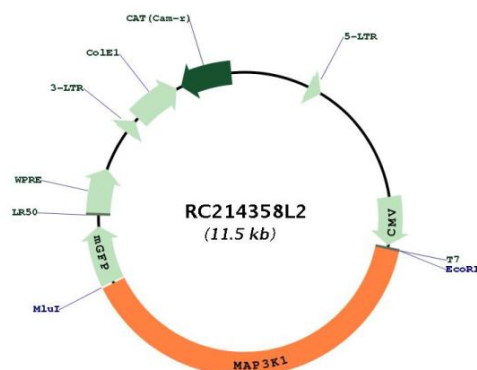
Product data:

Product Type:	Expression Plasmids
Product Name:	MEKK1 (MAP3K1) (NM_005921) Human Tagged Lenti ORF Clone
Tag:	mGFP
Symbol:	MEKK1
Synonyms:	MAPKKK1; MEKK; MEKK 1; MEKK1; SRXY6
Mammalian Cell Selection:	None
Vector:	pLenti-C-mGFP (PS100071)
E. coli Selection:	Chloramphenicol (34 ug/mL)
ORF Nucleotide Sequence:	The ORF insert of this clone is exactly the same as(RC214358).
Restriction Sites:	EcoRI-MluI
Cloning Scheme:	
ACCN:	NM_005921
ORF Size:	4536 bp
OTI Disclaimer:	The molecular sequence of this clone aligns with the gene accession number as a point of reference only. However, individual transcript sequences of the same gene can differ through naturally occurring variations (e.g. polymorphisms), each with its own valid existence. This clone is substantially in agreement with the reference, but a complete review of all prevailing variants is recommended prior to use. More info
OTI Annotation:	This clone was engineered to express the complete ORF with an expression tag. Expression varies depending on the nature of the gene.
Components:	The ORF clone is ion-exchange column purified and shipped in a 2D barcoded Matrix tube containing 10ug of transfection-ready, dried plasmid DNA (reconstitute with 100 ul of water).

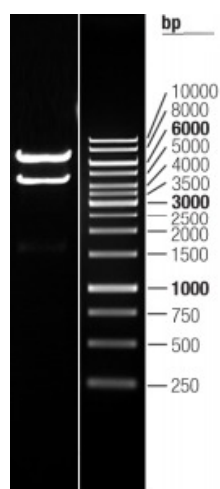

[View online »](#)

Reconstitution Method:	<ol style="list-style-type: none"> 1. Centrifuge at 5,000xg for 5min. 2. Carefully open the tube and add 100ul of sterile water to dissolve the DNA. 3. Close the tube and incubate for 10 minutes at room temperature. 4. Briefly vortex the tube and then do a quick spin (less than 5000xg) to concentrate the liquid at the bottom. 5. Store the suspended plasmid at -20°C. The DNA is stable for at least one year from date of shipping when stored at -20°C.
Note:	Plasmids are not sterile. For experiments where strict sterility is required, filtration with 0.22um filter is required.
RefSeq:	<u>NM_005921.1</u>
RefSeq Size:	7522 bp
RefSeq ORF:	4539 bp
Locus ID:	4214
UniProt ID:	<u>Q13233</u>
Cytogenetics:	5q11.2
Protein Families:	Druggable Genome, Protein Kinase
Protein Pathways:	GnRH signaling pathway, MAPK signaling pathway, Neurotrophin signaling pathway, RIG-I-like receptor signaling pathway, Ubiquitin mediated proteolysis
MW:	164.3 kDa
Gene Summary:	The protein encoded by this gene is a serine/threonine kinase and is part of some signal transduction cascades, including the ERK and JNK kinase pathways as well as the NF-kappa-B pathway. The encoded protein is activated by autophosphorylation and requires magnesium as a cofactor in phosphorylating other proteins. This protein has E3 ligase activity conferred by a plant homeodomain (PHD) in its N-terminus and phospho-kinase activity conferred by a kinase domain in its C-terminus. [provided by RefSeq, Mar 2012]

Product images:



Circular map for RC214358L2



Double digestion of RC214358L2 using SgfI and MluI