

## Product datasheet for **RC214345**

### **TUBB4Q (TUBB7P) (NM\_020040) Human Tagged ORF Clone**

#### **Product data:**

|                           |  |
|---------------------------|--|
| Product Type:             | Expression Plasmids                                |
| Product Name:             | TUBB4Q (TUBB7P) (NM_020040) Human Tagged ORF Clone |
| Tag:                      | Myc-DDK  |
| Symbol:                   | TUBB4Q   |
| Synonyms:                 | TUBB4Q   |
| Mammalian Cell Selection: | Neomycin   |
| Vector:                   | pCMV6-Entry (PS100001)                             |
| E. coli Selection:        | Kanamycin (25 ug/mL)                               |



[View online »](#)

**ORF Nucleotide Sequence:**

>RC214345 representing NM\_020040  
 Red=Cloning site Blue=ORF Green=Tags(s)

TTTTGTAATACGACTCACTATAGGGCGGCCGGAATTCGTCGACTGGATCCGGTACCGAGGAGATCTGCC  
 GCC**GCGATCGCC**

ATGAGGGAGCTTGTGCTCACGCAGACCGGGCAGTGC GGGAACCAGATCGGCGCCAAGTTCTGGGAGGTGA  
 TCTCTGATGAACATGCCATCGACTCCGCTGGCACCTACCACGGGGACAGCCACCTGCAGCTGGAGCGCAT  
 CAACGTGCACCACCACGAGGCCAGCGGTGGCAGGTACGTGTCCC GCGCTGTGCTCGTGGATCTGGAGCCG  
 GGCACCATGGACTCTGTGCGCTCGGGGCCCTTCGGGCAGGTCTTCAGGCCAGACA ACTTCAATTTCCCGTC  
 AGTGTGGGGCCGAAACA ACTGGGCCAAGGGACGCTACACCGAAGGCGCGGAGCTGACGGAGTCA GTGAT  
 GGACGTTGT CAGAAAGGAGGCTGAGAGCTGTGACTGCCTGCAGGGTTTCCAGCTGACCCACTCCCTGGGT  
 GGGGGGACTGGTCTGGGATGGTACCCTTCTCATTAGTAAGATCTGGGAGGAGTACCCAGACAGGATTA  
 TAAACACATTGAGCATCCTGCTTGTGCCAAGGTGTCAGACACCGTGGTGGAGCCCTACAACGCCACCT  
 CTCAGTCCACCAGCTCATAGAAAACGCAGATGAGACCTTCTGCATAGATAACGAAGCGCTATATGACATA  
 TGTTCAGGACCCTAAA ACTGCCACACCCACCTATGGTGACCTGAACCACCTGGTGTCTGCTACCATGA  
 GTGGGGTCAACACGTGCCTGTGCTTCCCCGACCAGCTGAATGCTGACCTGCGGAAGCTGGCCATGAACAT  
 GGTCCC GTTTCCCGGCTGCATTTCTTCATGCCCGGCTTTGCCCACTGACCAGCCGGGGCAGCCAGCAG  
 TACCGGGCCTTGACTGTGGCTGAGCTCACCCAGCAGATGTTTGATGCTAAGAACATGATGGCTGCCCGTG  
 ACCCCCGTCACGGCCGCTACCTAACGGCGGCTGCCATTTTCCAGGGTCCGATGCCCATGAGGGAGGTGGA  
 TGAACAGATGTTCAACATTCAAGATAAGAACAGCAGCTACTTTGCTGACTGGTCCCAACAACGTA AAA  
 ACAGCCGCTCTGTGACATCCCACCTGGGGGCTAAAAATGTCAGTACCTTCACTGGGAACAACACAGCCG  
 TCCAGGAACTCAAGCGGGTCTCAGAGCAGTTTACAGCAACGTTT CAGGCGCAAGGCCTTCTCCACTGGTA  
 CACGGGGCAGGGCATGGATGAGATGGAATTCACCTGAGGCCGAGAGCAACATGAACGACTTGGTGTCTGAA  
 TATCAGCAATATCAGGATGCCACGGCCAGGGAGGAGGAGTA

**ACGCGT**ACGCGGCCGCTCGAGCAGAAACTCATCTCAGAAGAGGATCTGGCAGCAAATGATATCCTGGATT  
 ACAAGGATGACGACGATAAGGTTTAA

**Protein Sequence:**

>RC214345 representing NM\_020040  
 Red=Cloning site Green=Tags(s)

MRELVL TQTGQCGNQIGAKFWEVISDEHAIDSAGTYHGDSLQLERINVHHHEASGGRYVSR AVLVDLEP  
 GTMDSVRS GPFQVFRPDNFI SRQCGAGNNWAKGRYTEGAELTESVMDVVRKEAESCDCLQGFQLTHSLG  
 GGTGSGMGTLLISKIWE EYPDRINTLSILLLPKVS DTVVEPYNATLSVHQLIENADETFCIDNEALYDI  
 CSRTLKLPPTYGDLNHLV SATMSGVTTCLCFPDQLNADLRK LAMNMVFPRLHFFMPGFAPLTSRGSQQ  
 YRALTVAELTQQMFD AKNMMAARDPRHGRYL TAAAI FQGRMPMREVDEQMFNIQDKNSSYFADWFPNNVK  
 TAVCDIPPWGLKMSVTF TGNNTAVQELKRVSEQF TATFRRKAF LHWYTGEGMDEMEFTEAESNMNDLVSE  
 YQYQDATAEGGGV

**TR**TRPLEQKLISEEDLAANDILDYKDDDDKV

**Chromatograms:**

[https://cdn.origene.com/chromatograms/mk8030\\_f02.zip](https://cdn.origene.com/chromatograms/mk8030_f02.zip)

**Restriction Sites:**

SgfI-MluI

**Cloning Scheme:**


**ACCN:** NM\_020040

**ORF Size:** 1302 bp

**OTI Disclaimer:** The molecular sequence of this clone aligns with the gene accession number as a point of reference only. However, individual transcript sequences of the same gene can differ through naturally occurring variations (e.g. polymorphisms), each with its own valid existence. This clone is substantially in agreement with the reference, but a complete review of all prevailing variants is recommended prior to use. [More info](#)

**OTI Annotation:** This clone was engineered to express the complete ORF with an expression tag. Expression varies depending on the nature of the gene.

**Components:** The ORF clone is ion-exchange column purified and shipped in a 2D barcoded Matrix tube containing 10ug of transfection-ready, dried plasmid DNA (reconstitute with 100 ul of water).

**Reconstitution Method:**

1. Centrifuge at 5,000xg for 5min.
2. Carefully open the tube and add 100ul of sterile water to dissolve the DNA.
3. Close the tube and incubate for 10 minutes at room temperature.
4. Briefly vortex the tube and then do a quick spin (less than 5000xg) to concentrate the liquid at the bottom.
5. Store the suspended plasmid at -20°C. The DNA is stable for at least one year from date of shipping when stored at -20°C.

**RefSeq:** [NM\\_020040.3](#), [NP\\_064424.3](#)

**RefSeq Size:** 1305 bp

**RefSeq ORF:** 1304 bp

**Locus ID:** 56604

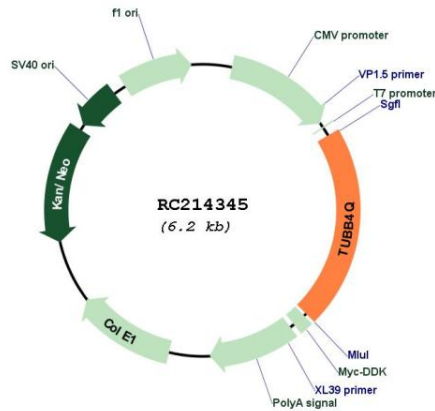
**Cytogenetics:** 4q35.2

**Protein Families:** Druggable Genome

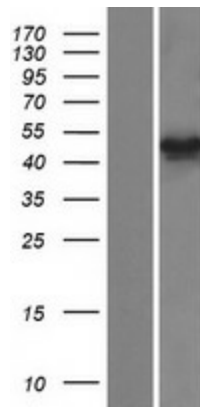
**Protein Pathways:** Gap junction, Pathogenic Escherichia coli infection

**MW:** 48.3 kDa

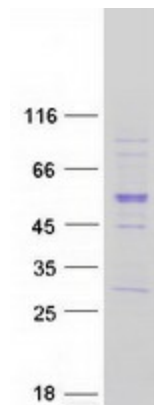
**Product images:**



Circular map for RC214345



Western blot validation of overexpression lysate (Cat# [LY412671]) using anti-DDK antibody (Cat# [TA50011-100]). Left: Cell lysates from untransfected HEK293T cells; Right: Cell lysates from HEK293T cells transfected with RC214345 using transfection reagent MegaTran 2.0 (Cat# [TT210002]).



Coomassie blue staining of purified TUBB4Q protein (Cat# [TP314345]). The protein was produced from HEK293T cells transfected with TUBB4Q cDNA clone (Cat# RC214345) using MegaTran 2.0 (Cat# [TT210002]).