

## Product datasheet for **RC214339**

### BTG4 (NM\_017589) Human Tagged ORF Clone

#### Product data:

Product Type:	Expression Plasmids
Product Name:	BTG4 (NM_017589) Human Tagged ORF Clone
Tag:	Myc-DDK
Symbol:	BTG4
Synonyms:	APRO3; OOMD8; PC3B
Mammalian Cell Selection:	Neomycin
Vector:	pCMV6-Entry (PS100001)
E. coli Selection:	Kanamycin (25 ug/mL)
ORF Nucleotide Sequence:	>RC214339 representing NM_017589 Red=Cloning site Blue=ORF Green=Tags(s)

TTTTGTAATACGACTCACTATAGGGCGGCCGGAATTCGTCGACTGGATCCGGTACCGAGGAGATCTGCC  
GCC**CGATCGCC**

ATGAGAGATGAAATTGCAACAACAGTTTTCTTTGTCACAAGATTGGTGAAAAACATGATAAACTAAGTA  
AACAGCAAATAGAAGACTTTGCAGAAAAGCTGATGACGATCTTGTGGAAACATACAGAAGTCACCTGGCA  
CTCTGATTGCCCTTCTAAAGGGCAAGCCTTCAGGTGCATCAGGATAAACAACAATCAGAATAAAGATCCC  
ATTCTAGAAAGGGCATGTGTGAAAGTAATGTAGATTTTTCTCACCTGGGACTTCCGAAGGAGATGACCA  
TATGGGTAGATCCCTTTGAAGTATGCTGTAGGTATGGTGAGAAAAACCATCCATTTACAGTTGCTTCTTT  
TAAAGGCAGATGGGAGGAATGGGAATATCAACAAATCAGTTATGCCGTTAGTAGAGCCTCATCAGAC  
GTTTCCTCTGGCACTTCCCTGCGATGAAGAAAGTTGATGCAAGGAACCTCGTGTCATTCTAAAGTCAGCA  
ATCCGAAGAGTATTTATCAGGTTGAAAACCTTGAACAGCCCTTTCAATCTTGGTTACAAATCCCCCGCAA  
AAAGAATGTGGTGGACGGCCGTGTTGGCCTCCTGGGAAACACTTACCATGGCTCGCAGAAGCATCTTAAG  
TGTTACAGGCCTGCTATGCACCGGCTGGACAGAATTTTA

**ACGCGT**ACGCGGCGCTCGAGCAGAACTCATCTCAGAAGAGGATCTGGCAGCAAATGATATCCTGGATT  
ACAAGGATGACGACGATAAGGTTTAA



[View online »](#)



**Reconstitution Method:**

1. Centrifuge at 5,000xg for 5min.
2. Carefully open the tube and add 100ul of sterile water to dissolve the DNA.
3. Close the tube and incubate for 10 minutes at room temperature.
4. Briefly vortex the tube and then do a quick spin (less than 5000xg) to concentrate the liquid at the bottom.
5. Store the suspended plasmid at -20°C. The DNA is stable for at least one year from date of shipping when stored at -20°C.

**RefSeq:** [NM\\_017589.4](#)

**RefSeq Size:** 1000 bp

**RefSeq ORF:** 672 bp

**Locus ID:** 54766

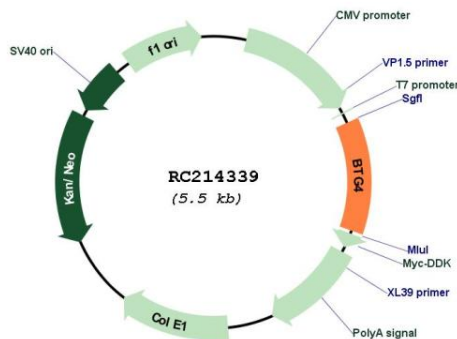
**UniProt ID:** [Q9NY30](#)

**Cytogenetics:** 11q23.1

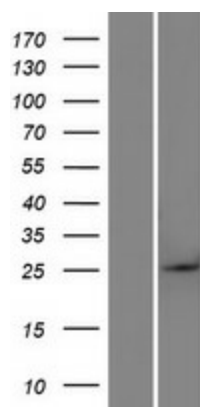
**MW:** 25.8 kDa

**Gene Summary:** The protein encoded by this gene is a member of the BTG/Tob family. This family has structurally related proteins that appear to have antiproliferative properties. This encoded protein can induce G1 arrest in the cell cycle. [provided by RefSeq, Jul 2008]

**Product images:**



Circular map for RC214339



Western blot validation of overexpression lysate (Cat# [LY413680]) using anti-DDK antibody (Cat# [TA50011-100]). Left: Cell lysates from untransfected HEK293T cells; Right: Cell lysates from HEK293T cells transfected with RC214339 using transfection reagent MegaTran 2.0 (Cat# [TT210002]).