

Product datasheet for RC214323

BCCIP (NM_078469) Human Tagged ORF Clone

Product data:

Product Type:	Expression Plasmids
Product Name:	BCCIP (NM_078469) Human Tagged ORF Clone
Tag:	Myc-DDK
Symbol:	BCCIP
Synonyms:	TOK-1; TOK1
Mammalian Cell Selection:	Neomycin
Vector:	pCMV6-Entry (PS100001)
E. coli Selection:	Kanamycin (25 ug/mL)
ORF Nucleotide Sequence:	>RC214323 representing NM_078469 Red=Cloning site Blue=ORF Green=Tags(s)

TTTTGTAATACGACTCACTATAGGGCGGCCGGAATTCGTCGACTGGATCCGGTACCGAGGAGATCTGCC
GCC**CGATCGCC**

ATGGCGTCCAGGTCTAAGCGGCGTGCCGTGAAAGTGGGGTCCGCAGCCCGGATCCCCAGTCCAGC
GCGACGAGGAAGAGGAAAAAGAAGTCGAAAATGAGGATGAAGACGATGATGACAGTGACAAGAAAAAGGA
TGAAGAGGACGAGGTCATTGACGAGGAAGTGAATATTGAATTTGAAGCTTATCCCTATCAGATAATGAT
TATGACGGAATTAAGAAATTACTGCAGCAGCTTTTTCTAAAGGCTCCTGTGAACACTGCAGAACTAACAG
ATCTCTTAATTCACAGAACCATTGGGAGTGTGATTAAGCAAACGGATGTTTCAGAAGACAGCAATGA
TGATATGGATGAAGATGAGGTTTTGGTTTCATAAGCCTTTTAAATTTAACTGAAAGAAAGGATACCCAG
TGTGTTGAACAAATTCAGAGTTGGTTCTACGCTTCTGTGAGAAGAACTGTGAAAAGAGCATGGTTGAAC
AGCTGGACAAGTTTTTAAATGACACCACCAAGCCTGTGGGCTTCTCCTAAGTAAAAGATTCATTAATGT
CCCTCCACAGATCGCTCTGCCCATGTACCAGCAGCTTCAGAAAGAACTGGCGGGGCACACAGAACCAAT
AAGCCATGTGGGAAGTACTTTTACCTTCTGATTAGTAAGACATTTGTGGAAGCAGGAAAAACAATT
CCAAAAAGAAACCTAGCAACAAAAAGAAAGCTGCGTTAATGTTTGCAAAATGCAGAGGAAGAATTTTCTA
TGAGGAGCAGGGAAAACCTGAGGTGCTTGAGGTCCAGACACAAGAAGAGGATTGGAACCAAGTCCGATA
CAGCACAATGGTTGGTCTGTTCCCCAGTATTAGAA

ACGCGTACGCGGCGCTCGAGCAGAAACTCATCTCAGAAGAGGATCTGGCAGCAAATGATATCCTGGATT
ACAAGGATGACGACGATAAGGTTTAA



[View online »](#)

Protein Sequence: >RC214323 representing NM_078469
Red=Cloning site Green=Tags(s)

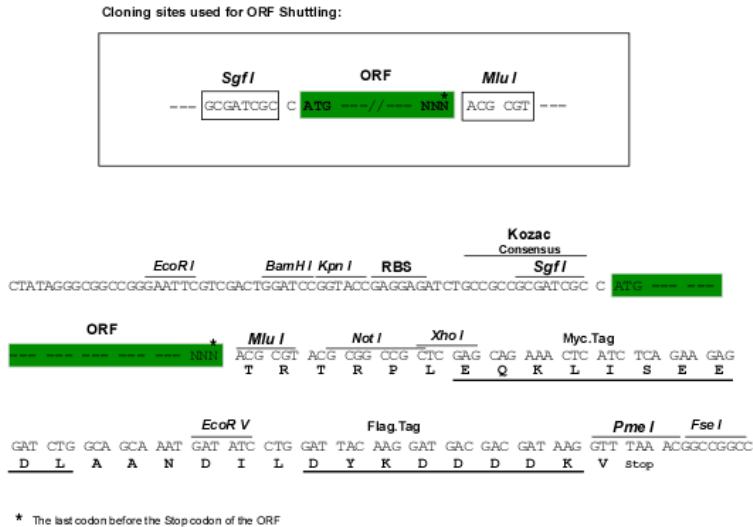
MASRSKRRAVESGVPQPPDPPVQRDEEEKEVENEDDDSDKEKDEEVIDEEVNIEFEAYSLSNDND
 YDGIKLLQLFLKAPVNTAELTDLLIQNHIGSVIKQTDVSEDSNDMDDEVEVGFISLLNLTERKGTQ
 CVEQIQELVLRFCENCKEKSMEVQLDKFLNDTTKPVGLLLSERFINVPPQIALPMYQQLQKELAGAHRTN
 KPCGKCYFYLLISKTFVEAGKNNKSKKPSNKKKAALMFANAEEFFYEEQKPEVLGGPDTRRGLEPVPI
 QHNGWSVPPVLE

TRTRPLEQKLISEEDLAANDILDYKDDDDKV

Chromatograms: https://cdn.origene.com/chromatograms/ja1479_f05.zip

Restriction Sites: SgfI-MluI

Cloning Scheme:



ACCN: NM_078469

ORF Size: 876 bp

OTI Disclaimer: The molecular sequence of this clone aligns with the gene accession number as a point of reference only. However, individual transcript sequences of the same gene can differ through naturally occurring variations (e.g. polymorphisms), each with its own valid existence. This clone is substantially in agreement with the reference, but a complete review of all prevailing variants is recommended prior to use. [More info](#)

OTI Annotation: This clone was engineered to express the complete ORF with an expression tag. Expression varies depending on the nature of the gene.

Components: The ORF clone is ion-exchange column purified and shipped in a 2D barcoded Matrix tube containing 10ug of transfection-ready, dried plasmid DNA (reconstitute with 100 ul of water).

Reconstitution Method:

1. Centrifuge at 5,000xg for 5min.
2. Carefully open the tube and add 100ul of sterile water to dissolve the DNA.
3. Close the tube and incubate for 10 minutes at room temperature.
4. Briefly vortex the tube and then do a quick spin (less than 5000xg) to concentrate the liquid at the bottom.
5. Store the suspended plasmid at -20°C. The DNA is stable for at least one year from date of shipping when stored at -20°C.

RefSeq: [NM_078469.3](#)

RefSeq Size: 2338 bp

RefSeq ORF: 879 bp

Locus ID: 56647

UniProt ID: [Q9P287](#)

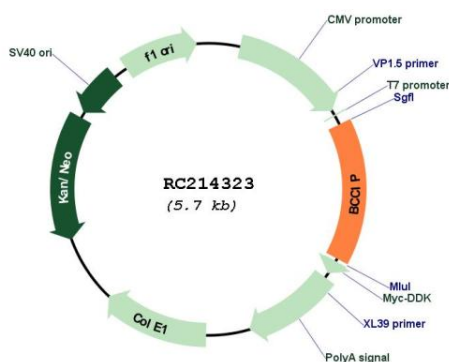
Cytogenetics: 10q26.2

Protein Families: Druggable Genome, Stem cell - Pluripotency

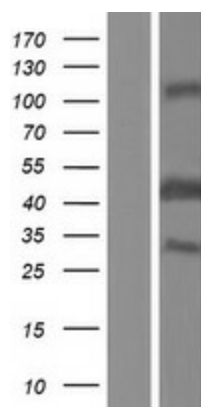
MW: 33.1 kDa

Gene Summary: This gene product was isolated on the basis of its interaction with BRCA2 and p21 proteins. It is an evolutionarily conserved nuclear protein with multiple interacting domains. The N-terminal half shares moderate homology with regions of calmodulin and M-calpain, suggesting that it may also bind calcium. Functional studies indicate that this protein may be an important cofactor for BRCA2 in tumor suppression, and a modulator of CDK2 kinase activity via p21. This protein has also been implicated in the regulation of BRCA2 and RAD51 nuclear focus formation, double-strand break-induced homologous recombination, and cell cycle progression. Multiple transcript variants encoding different isoforms have been described for this gene. [provided by RefSeq, Jul 2008]

Product images:



Circular map for RC214323



Western blot validation of overexpression lysate (Cat# [LY409215]) using anti-DDK antibody (Cat# [TA50011-100]). Left: Cell lysates from untransfected HEK293T cells; Right: Cell lysates from HEK293T cells transfected with RC214323 using transfection reagent MegaTran 2.0 (Cat# [TT210002]).