

Product datasheet for RC214320L1

hnRNP U (HNRNPU) (NM_031844) Human Tagged Lenti ORF Clone

Product data:

Product Type:	Expression Plasmids
Product Name:	hnRNP U (HNRNPU) (NM_031844) Human Tagged Lenti ORF Clone
Tag:	Myc-DDK
Symbol:	hnRNP U
Synonyms:	DEE54; EIEE54; GRIP120; hnRNP U; HNRNPU-AS1; HNRPU; pp120; SAF-A; SAFA; U21.1
Mammalian Cell Selection:	None
Vector:	pLenti-C-Myc-DDK (PS100064)
E. coli Selection:	Chloramphenicol (34 ug/mL)
ORF Nucleotide Sequence:	The ORF insert of this clone is exactly the same as(RC214320).
Restriction Sites:	SgfI-MluI
Cloning Scheme:	

Cloning sites used for ORF Shuttling:



* The last codon before the Stop codon of the ORF.

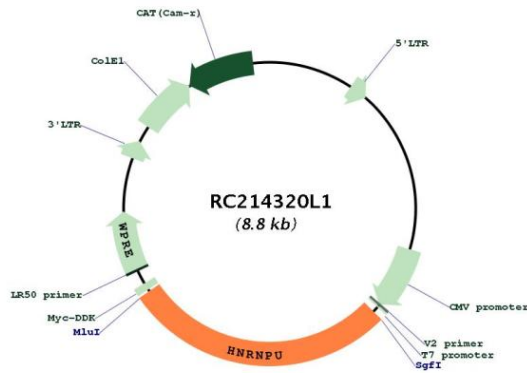
ACCN:	NM_031844
ORF Size:	2475 bp



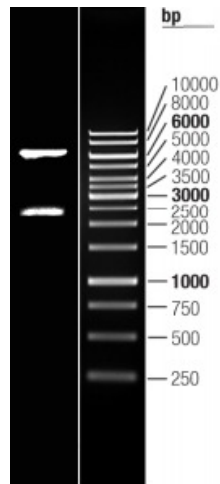
[View online »](#)

OTI Disclaimer:	The molecular sequence of this clone aligns with the gene accession number as a point of reference only. However, individual transcript sequences of the same gene can differ through naturally occurring variations (e.g. polymorphisms), each with its own valid existence. This clone is substantially in agreement with the reference, but a complete review of all prevailing variants is recommended prior to use. More info
OTI Annotation:	This clone was engineered to express the complete ORF with an expression tag. Expression varies depending on the nature of the gene.
Components:	The ORF clone is ion-exchange column purified and shipped in a 2D barcoded Matrix tube containing 10ug of transfection-ready, dried plasmid DNA (reconstitute with 100 ul of water).
Reconstitution Method:	<ol style="list-style-type: none">1. Centrifuge at 5,000xg for 5min.2. Carefully open the tube and add 100ul of sterile water to dissolve the DNA.3. Close the tube and incubate for 10 minutes at room temperature.4. Briefly vortex the tube and then do a quick spin (less than 5000xg) to concentrate the liquid at the bottom.5. Store the suspended plasmid at -20°C. The DNA is stable for at least one year from date of shipping when stored at -20°C.
RefSeq:	NM_031844.2
RefSeq Size:	6846 bp
RefSeq ORF:	2478 bp
Locus ID:	3192
UniProt ID:	Q00839
Cytogenetics:	1q44
Domains:	SAP, SPRY
Protein Families:	Druggable Genome
Protein Pathways:	Spliceosome
MW:	90.4 kDa
Gene Summary:	This gene encodes a member of a family of proteins that bind nucleic acids and function in the formation of ribonucleoprotein complexes in the nucleus with heterogeneous nuclear RNA (hnRNA). The encoded protein has affinity for both RNA and DNA, and binds scaffold-attached region (SAR) DNA. Mutations in this gene have been associated with epileptic encephalopathy, early infantile, 54. A pseudogene of this gene has been identified on chromosome 14. [provided by RefSeq, Jun 2017]

Product images:



Circular map for RC214320L1



Double digestion of RC214320L1 using SgfI and MluI