

Product datasheet for RC214311

HOMER2 (NM_199331) Human Tagged ORF Clone

Product data:

Product Type:	Expression Plasmids
Product Name:	HOMER2 (NM_199331) Human Tagged ORF Clone
Tag:	Myc-DDK
Symbol:	HOMER2
Synonyms:	ACPD; CPD; HOMER-2; HOMER2A; HOMER2B; Vesl-2
Mammalian Cell Selection:	Neomycin
Vector:	pCMV6-Entry (PS100001)
E. coli Selection:	Kanamycin (25 ug/mL)
ORF Nucleotide Sequence:	>RC214311 representing NM_199331 Red=Cloning site Blue=ORF Green=Tags(s)

TTTTGTAATACGACTCACTATAGGGCGGCCGGAATTCGTCGACTGGATCCGGTACCGAGGAGATCTGCC
GCC**CGGATCGCC**

ATGGGAGAACAGCCCATCTTCACCACCCGAGCGCATGTCTTCCAGATTGACCCCAACACCAAGAAGAACT
GGATGCCTGCGAGCAAGCAGGCGGTACCCTTTCTACTTCTATGATGTCACAAGGAACAGCTATCGGAT
CATCAGTGTGGACGGAGCCAAGGTGATCATAAACAGCACAATCACACCGAATATGACCTTACCAAAAACG
TCACAGAAAGTTGGGCAGTGGGCCGACAGCAGAGCCAACACAGTGTGGTTGGGGTTTCTCTGAGC
AGCAGCTGACAAAGTTTGCAGAGAAATCCAGGAGGTGAAAGAAGCTGCCAAGATAGCCAAGACAAGAC
GCAGGAGAAAATCGAGACCTCAAGTAATCATTCCAAGCATCCAGTGTCAACGGGACGGACGATGAAAAG
GCCTCTCACGCCGTCCAGCCAACACACCTGAAGTCTGAGAATGACAAGCTGAAGATTGCCTTGACGC
AGAGCGCAGCCAACGTGAAGATGAGATCAACAGAGAGAAGGAGAAGAACACGCAGCTGAAGAGGAGGAT
CGAGGAGCTGGAGGCAGAGCTCCGAGAAAAGGAGACAGAGCTGAAAGATCTCCGAAAACAAAGTGAATC
ATACCTCAGCTCATGTGAGAGTGCGAATATGTCTCTGAGAAGCTAGAGGGCGCAGAGAGAGACAATCAA
ACCTGGAAGACAAAGTGCCTTAAAGACAGACATTGAGGAGAGCAAATACCGACAGCGCCACCTGAA
GGTGGAGTTGAAGAGCTTCTGGAGGTGCTGGACGGGAAGATTGACGACCTGCATGACTTCCGCCGAGGG
CTCTCCAAGCTGGGCACCGATAAC

ACGCGTACGCGGCCGCTCGAGCAGAAACTCATCTCAGAAGAGGATCTGGCAGCAAATGATATCCTGGATT
ACAAGGATGACGACGATAAGGTTTAA



[View online »](#)

Protein Sequence: >RC214311 representing NM_199331
Red=Cloning site Green=Tags(s)

MGEQPIFTTRAHVFDIDPNTKKNWMPASKQAVTVSYFYDVTRNSYRIISVDGAKVIINSTITPNMTFTKT
 SQKFGQWADSRANTVFGGLFSSEQQLTKFAEKFEVKEAAKIAKDKTQEKIETSSNHSQASSVNGTDDEK
 ASHAGPANTHLKSENDKLIKIALTQSAANVKNEINREKEKNTQLKRRRIEELAELEKREKTELKDLRKQSEI
 IPQLMSECEYVSEKLEAAERDNQNLNLEDKVRSKTDIEESKYRQRHLKVELKSFLEVLGDKIDDLHDFRRG
 LSKLGTDN

TRTRPLEQKLISEEDLAANDILDYKDDDDKV

Chromatograms: https://cdn.origene.com/chromatograms/mk8049_f07.zip

Restriction Sites: SgfI-MluI

Cloning Scheme:



ACCN: NM_199331

ORF Size: 864 bp

OTI Disclaimer: The molecular sequence of this clone aligns with the gene accession number as a point of reference only. However, individual transcript sequences of the same gene can differ through naturally occurring variations (e.g. polymorphisms), each with its own valid existence. This clone is substantially in agreement with the reference, but a complete review of all prevailing variants is recommended prior to use. [More info](#)

OTI Annotation: This clone was engineered to express the complete ORF with an expression tag. Expression varies depending on the nature of the gene.

Components: The ORF clone is ion-exchange column purified and shipped in a 2D barcoded Matrix tube containing 10ug of transfection-ready, dried plasmid DNA (reconstitute with 100 ul of water).

Reconstitution Method:

1. Centrifuge at 5,000xg for 5min.
2. Carefully open the tube and add 100ul of sterile water to dissolve the DNA.
3. Close the tube and incubate for 10 minutes at room temperature.
4. Briefly vortex the tube and then do a quick spin (less than 5000xg) to concentrate the liquid at the bottom.
5. Store the suspended plasmid at -20°C. The DNA is stable for at least one year from date of shipping when stored at -20°C.

RefSeq: [NM_199331.2](#), [NP_955363.2](#)

RefSeq Size: 1807 bp

RefSeq ORF: 866 bp

Locus ID: 9455

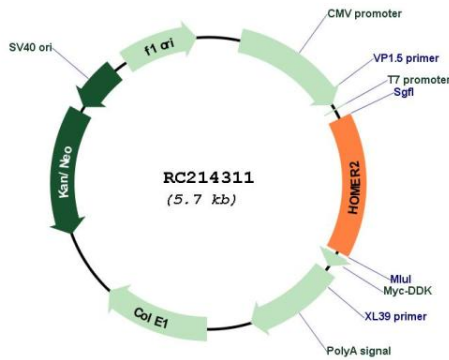
Cytogenetics: 15q25.2

Protein Families: Druggable Genome

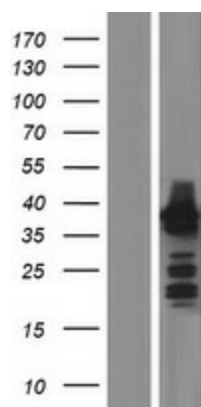
MW: 32.7 kDa

Gene Summary: This gene encodes a member of the homer family of dendritic proteins. Members of this family regulate group 1 metabotropic glutamate receptor function. The encoded protein is a postsynaptic density scaffolding protein. Alternative splicing results in multiple transcript variants. Two related pseudogenes have been identified on chromosome 14. [provided by RefSeq, Jun 2011]

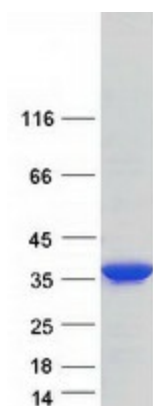
Product images:



Circular map for RC214311



Western blot validation of overexpression lysate (Cat# [LY404626]) using anti-DDK antibody (Cat# [TA50011-100]). Left: Cell lysates from untransfected HEK293T cells; Right: Cell lysates from HEK293T cells transfected with RC214311 using transfection reagent MegaTran 2.0 (Cat# [TT210002]).



Coomassie blue staining of purified HOMER2 protein (Cat# [TP314311]). The protein was produced from HEK293T cells transfected with HOMER2 cDNA clone (Cat# RC214311) using MegaTran 2.0 (Cat# [TT210002]).