

## Product datasheet for RC214292

### ADA2 (NM\_177405) Human Tagged ORF Clone

#### Product data:

**Product Type:** Expression Plasmids  
**Product Name:** ADA2 (NM\_177405) Human Tagged ORF Clone  
**Tag:** Myc-DDK  
**Symbol:** ADA2  
**Synonyms:** ADGF; CECR1; IDGFL; PAN; SNEDS; VAIHS  
**Mammalian Cell Selection:** Neomycin  
**Vector:** pCMV6-Entry (PS100001)  
**E. coli Selection:** Kanamycin (25 ug/mL)  
**ORF Nucleotide Sequence:** >RC214292 representing NM\_177405  
Red=Cloning site Blue=ORF Green=Tags(s)

TTTTGTAATACGACTCACTATAGGGCGGCCGGAATTCGTCGACTGGATCCGGTACCGAGGAGATCTGCC  
GCC**CGATCGCC**

ATGGATCCCTGGAATGGAAGTGGGCTCTGGTGTATGAGCTCAGTGGAGAGCACCATGACGAAGAGTGGT  
CAGTGAAGACTTACCAGGAAGTAGCTCAGAAGTTTGTGGAACTCACCTGAGTTTATTGGAATCAAAT  
CATTTATTCGGATCACAGATCCAAAGATGTGGCTGTATCGCAGAATCCATCCGAATGGCCATGGGGCTC  
CGAATCAAGTTCCCCACGGTGGTGGCAGGGTTTGACCTGGTGGGGCATGAGGACTGGCCACTCCTTGC  
ATGACTACAAGGAAGCTCTGATGATCCCGCCAAGGATGGCGTTAAGCTGCCTTACTTCTCCACGCCGG  
AGAAACAGACTGGCAGGGTACTTCCATAGACAGGAACATTCTGGATGCTCTGATGCTGAACACTACCAGA  
ATCGGCCATGGATTTGCTTTGAGCAAACACCCCGCAGTCAGGACTTACTCCTGAAAAAGGACATCCCCA  
TAGAAGTCTGTCCATCTCTAACCAGGTGCTGAACTGGTGTCTGACTTGAGGAACCACCCTGTAGCCAC  
TCTGATGGCCACTGGCACCCCATGGTATCAGCTCTGATGACCCAGCTATGTTTGGTGCCAAAGGCTTG  
TCCTATGATTTCTATGAGGTCTTCATGGGCATTGGGGGATGAAGGCTGACCTGAGGACCCTCAAACAGC  
TGGCCATGAACTCTATCAAGTACAGTACCCTGTTGGAGAGTGAGAAAAATACTTTTCATGAAATCTGGAA  
GAAGAGATGGGATAAGTTCATAGCAGATGTGGCTACAAAG

**ACGCGT**ACGCGGCCGCTCGAGCAGAACTCATCTCAGAAGAGGATCTGGCAGCAAATGATATCCTGGATT  
ACAAGGATGACGACGATAAGGTTTAA

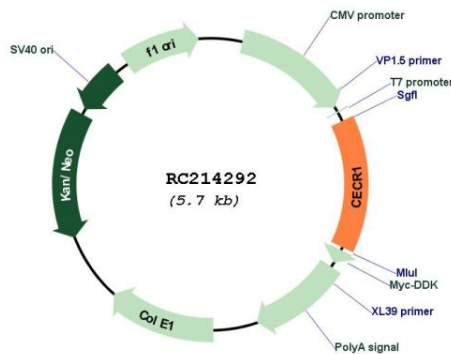


[View online »](#)

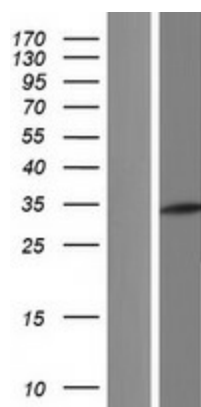


<b>Components:</b>	The ORF clone is ion-exchange column purified and shipped in a 2D barcoded Matrix tube containing 10ug of transfection-ready, dried plasmid DNA (reconstitute with 100 ul of water).
<b>Reconstitution Method:</b>	<ol style="list-style-type: none"> <li>1. Centrifuge at 5,000xg for 5min.</li> <li>2. Carefully open the tube and add 100ul of sterile water to dissolve the DNA.</li> <li>3. Close the tube and incubate for 10 minutes at room temperature.</li> <li>4. Briefly vortex the tube and then do a quick spin (less than 5000xg) to concentrate the liquid at the bottom.</li> <li>5. Store the suspended plasmid at -20°C. The DNA is stable for at least one year from date of shipping when stored at -20°C.</li> </ol>
<b>RefSeq:</b>	<u><a href="#">NM_177405.3</a></u>
<b>RefSeq Size:</b>	3071 bp
<b>RefSeq ORF:</b>	813 bp
<b>Locus ID:</b>	51816
<b>UniProt ID:</b>	<u><a href="#">Q9NZK5</a></u>
<b>Cytogenetics:</b>	22q11.1
<b>Protein Families:</b>	Druggable Genome, Secreted Protein, Transmembrane
<b>MW:</b>	30.5 kDa
<b>Gene Summary:</b>	This gene encodes a member of a subfamily of the adenosine deaminase protein family. The encoded protein is one of two adenosine deaminases found in humans, which regulate levels of the signaling molecule, adenosine. The encoded protein is secreted from monocytes undergoing differentiation and may regulate cell proliferation and differentiation. This gene may be responsible for some of the phenotypic features associated with cat eye syndrome. Alternative splicing results in multiple transcript variants. [provided by RefSeq, Aug 2013]

**Product images:**



Circular map for RC214292



Western blot validation of overexpression lysate (Cat# [LY406155]) using anti-DDK antibody (Cat# [TA50011-100]). Left: Cell lysates from untransfected HEK293T cells; Right: Cell lysates from HEK293T cells transfected with RC214292 using transfection reagent MegaTran 2.0 (Cat# [TT210002]).