

Product datasheet for RC214288

SRGAP3 (NM_014850) Human Tagged ORF Clone

Product data:

Product Type:	Expression Plasmids
Product Name:	SRGAP3 (NM_014850) Human Tagged ORF Clone
Tag:	Myc-DDK
Symbol:	SRGAP3
Synonyms:	ARHGAP14; MEGAP; SRGAP2; WRP
Mammalian Cell Selection:	Neomycin
Vector:	pCMV6-Entry (PS100001)
E. coli Selection:	Kanamycin (25 ug/mL)
ORF Nucleotide Sequence:	>RC214288 representing NM_014850 Red=Cloning site Blue=ORF Green=Tags(s)

TTTTGTAATACGACTCACTATAGGGCGGCCGGAATTCGTCGACTGGATCCGGTACCGAGGAGATCTGCC
GCC**CGATCGCC**

ATGTCATCTCAAACAAAGTTCAAGAAAGACAAAGAGATCATTGCTGAATATGAAGCCAAATAAAAGAGA
TCCGCACGCAGCTGGTGGAGCAGTTCAAATGTCTGGAGCAGCAATCAGAGTCGCGACTGCAGCTGCTTCA
AGACCTCCAGGAGTTTTCCGCCGGAAGCTGAGATTGAGCTCGAGTACTCCCGCAGCCTGGAGAAGCTG
GCTGAGCGCTTCTCTCCAAAATCCGCAGCTCCCGGGAGCACCAGTTCAAGAAGGACCAGTACCTCTCT
CGCCTGTGAAGTGTGGTATCTGGTTCTGCATCAGACCCGGCGGAGAGCCGAGACCATGCCACCCTCAA
TGACATCTTCATGAACAATGTCATCGTCCGCTCTCCAGATCAGTGAGGATGTCATCAGACTCTTCAA
AAGAGCAAGGAGATTGGCTGCAGATGCACGAGGAGCTCCTGAAGGTGACCAATGAGCTCTACACAGTCA
TGAAAACCTACCACATGTACCATGCAGAGAGCATCAGTGCAGAAAGCAAGCTGAAGGAGGCTGAGAAGCA
GGAGGAGAAGCAGTTCAATAAGTCAGGAGACCTCAGCATGAACCTGCTCCGGCAGCAGGACCCGCCAG
CGCCGCAGCTCTGTGAAGAAGATTGAGAAGATGAAGGAGAAGAGGAGGCAAGTACTCTGAGAACAAGC
TGAAATGCACAAAGGCCGGAATGACTACTTGTCAATCTGGCAGCCACCAACGCAGCTATAAGCAAATA
CTACATCCATGATGTCTCTGATCTGATCGATTGCTGTGATTTGGGCTTCCATGCCAGCCTGGCCCCCACC
TTCCGGACCTATCTCAGCTGAATAACAACCTGGAGACCTCTGCCACGAAGGGCTGGATGTCATTGAGA
ATGCAGTGGACAACCTGGATTCGCCGAAGTGACAAGCACACAGTCATGGACATGTGCAATCAAGTCTTCTG
CCCTCCACTCAAGTTCGAGTTCAGCCCCACATGGGGGATGAGGTCTGCCAGGTACGCGCTCAGCAGCCC
GTCCAGACAGAAGTCTCATGCGTTATCACCAGCTGCAGTCCAGACTGGCCACCCTCAAGATAGAGAATG
AGGAGGTTAGGAAAACCTGGATGCCACCATGCAGACATTACAGGACATGCTGACTGTGGAGGACTTTGA
TGTCTCCGATGCCTTCCAACACAGTCGATCGACAGAGTCCGTCAAGTCCGCTGCCTCTGAGACCTACATG
AGCAAGATCAACATTGCCAAGAGGAGAGCAACCAGCAGGAAACAGAAATGTTTTATTTTACAAAATTTA
AAGAGTATGTGAATGGCAGTAACCTCATACCAAGCTGCAGGCCAAGCACGATTTACTCAAGCAGACCT
GGCGAAGGGGAAAGAGCAGAATGCGGCACCACCAGGCCCCCTGTCTTCCCCTAAACCACAGAAAATG



[View online »](#)

AGGAGACCTAGGCCTCTCTCAGTGTATAGCCATAAACTCTTTAACGGCAGTATGGAAGCATTCAATTAAGG
 ATTCAGGACAAGCTATACCGCTTGTAGTCGAGAGCTGCATCCGTTACATCAATTTATATGGACTCCAGCA
 GCAGGGGATCTTCAGAGTGCCAGGATCTCAGGTGGAAGTCAATGCATCAAAAATTCCTTTGAGAGAGGT
 GAAGACCCCTTGTGGACGATCAAAATGAACGAGATATCAATTCAGTCGCTGGTGTTTTAAACTGTATT
 TCCGAGGACTGAAAAACCACTCTTCTAAGGAAAGTTTCAAGATTTGATATCTACTATTAACCTGGA
 GAACCCAGCCGAGAGGGTGCACCAGATCCAACAAATCCTCGTACCCTTCCCCCGTGGTCAATTGGTGC
 ATGAGATACCTCTTCGCTTTCCTCAACCACTCTCCAGTATAGCAGCAGAGAACATGATGGATCCCTACA
 ACCTGGCCATCTGCTTCGGGCTACCCCTATGCACATCCCTGATGGGCAGGACCCTGTGTCTGCCAGGC
 ACACATCAATGAAGTCATCAAAACCATCATCATCCATCATGAAGCCATCTTCCCCAGCCCCGGGAGCTA
 GAGGGACCTGTGTATAAAAATGCATGGCTGGAGGGGAAGAATATTGTGACAGCCACACAGCGAGCCAG
 GGGCCATCGATGAAGTTGACCATGACAATGGCACTGAGCCTCATACCAGCGATGAAGAAGTGAGCAGAT
 CGAGGCTATTGCCAAGTTTACTACATGGGGCGTCCCCGCTGAGCTATCCTTCAAGAAGGGGGCTCG
 CTGCTCTGTACCACCGCCTCGGAGGACTGGTGGGAGGGCCGGCACACGGCGTGGATGGACTCATCC
 CCCATCAGTACATAGTTGTACAGGACATGGATGATGCCTTCTCCGACAGCCTGAGCCAGAAGGCTGACAG
 CGAGGCCAGCAGTGGGCCATTGTGGATGACAAGGCCTTCCAAAAACGACCTCCAGTCCCCACGGAG
 CACATCTCGGATTACGGCTTTGGGGGGTGTGGGCCGAGTGCCTTACGATCTGATGGAGCAGCCATCC
 CCAGACGCCGAAGCGGGGGCAGACACACAGCCCGCCCGGGGCTGGGCCCCAGCATAGACACACCACC
 CCGGGTCTGCCTGCCAGCAGCCCCACAAAATCCCCTCACCCGGGGAGGATCGAGAGCCCTGAG
 AAGCGGAGGATGGCGACGTTTCGGGAGCGCTGGCAGCATCAACTACCCTGACAAGAAGGCGCTCTCCGAAG
 GGCACCTCGATGAGGTGACCTGCGGTTCCACCAGGCACAGCAGCCTAGGGGACCACAAGTCCCTGGAGGC
 CGAGGCCCTGGCAGAAGACATCGAGAAGACCATGAGCAGCGCTCTGCACGAGTTGCGGAACTCGAGAGG
 CAGAACACGGTCAAGCAGCGCCAGATGTGGTCTGGACACCTTGAGGCCCTGAAGAACCCGCCAGGCC
 CCGTCAGCTCGGAGCCCGCAGTCCCCTCACACCATCGTCATCCGCGACCCCGATGCCCATGGCCGCG
 CAGCAGCAGTCTCTCCACCGAGATGATGACCCTTCAAGCAGCCCTGTCCGCCCGCTGGCTGGCGCC
 CAGCTCCGCCCGCCCCATGCGGCCGTGCGGCCGTGGTCCAGCACCGGTCCAGCAGCAGCAGCAGCT
 CGGGCGTGGCAGCCCGCCGTGACGCCACCGAGAAGATGTTCCCAACAGCTCAGCGACAAGTCGGG
 CACCATG

ACGCGTACGCGGCCGCTCGAGCAGAACTCATCTCAGAAGAGGATCTGGCAGCAATGATATCCTGGATT
 ACAAGGATGACGACGATAAGGTTTAA

Protein Sequence:

>RC214288 representing NM_014850
 Red=Cloning site Green=Tags(s)

MSSQTKFKKDKKEIIAEYEAQIKEIRTQLVEQFKLEQQSESRLQLLQDLQEFFRRKAEIELEYSRSLEKL
 AERFSSKIRSSREHQFKDQYLLSPVNCWYLVLHQTRRESRDHATLNDIFMNNVIVRLSQISEDVIRLQFK
 KSKEIGLQMHHEELLKVTNELYVMKTYHMYHAESI SAESKLKEAEQEEKQFNKSGDLSMNLRRHEDRPQ
 RRSSVKKIEKMKEKRQAKYSENKLCCTKARNDYLLNLAATNAAISKYYYIHDVSDLIDCCDLGFHASLART
 FRTYLSAEYNLETSRHEGLDVIENAVDNLDSRDKHTVMDMCNQVFCPPLKFEFQPHMGDEVQVSAQQP
 VQTELLMRYHQLQSRLATLKIENEEVRKTLDATMQLQDMLTVEFDVSDAFQHSRSTESVKSAASETYM
 SKINIARRANQQETEMFYFTKFKKEYVNGSNLITKLQAKHDLKQTLGEGERAECGTRRPPCLPPKPQKM
 RRPRPLSVYSHKLFNGSMEAFIKDSGQAIPLVVEESCIRYINLYGLQQQGI FRVPGSQVEVNDIKNSFERG
 EDPLVDDQNERDINSVAGVLKLYFRGLENPLFPKERFQDLISTIKLENPAERVHQIQQILVTLPRVVIVV
 MRYLFAFLNHL SQYSDENMMDPYNLAICFGPTLMHIPDGQDPVSCQAHINEVIKTI I IHHEAIFPSPREL
 EGPVYEKCMAGGEEYCDSPHSEPGAIDEVDHDNGTEPHTSDEEVEQIEAIAKFDYMGRSPREL SFKKGS
 LLLYHRASEDWEGRHNGVDGLIPHQYIVVQDMDDAFSDLSQKADSEASSGPLLDDKASSKNDLQSPTE
 HISDYGGVMGRVRLRSDGAAIPRRRSGGDTHSPPRGLGPSIDTPPRAAACPSPHKIPLTRGRIESPE
 KRRMATFGSAGSINYPDKKALSEGHSRSTCGSTRHSSLGDHKSLEAEALAEIEKTMSTALHELRELER
 QNTVKQAPDVVLDLLEPLKNPPGPVSSEPASPLHTIVIRDPDAAMRRSSSSSTEMMTTFKPALSARLAGA
 QLRPPMPRVPVQHRSSSSSSSGVGSAPVTPTEKMFNPSSADKSGTM

TRTRPLEQKLISEEDLAANDILDYKDDDDKV

Chromatograms: https://cdn.origene.com/chromatograms/mk8030_f10.zip
Restriction Sites: SgfI-MluI
Cloning Scheme:



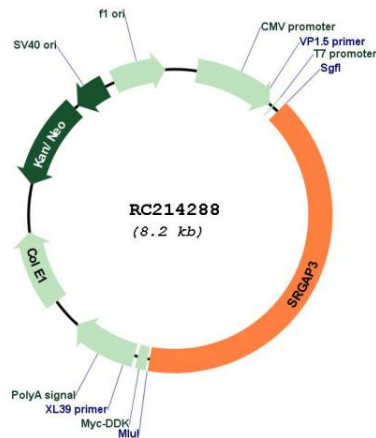
ACCN: NM_014850
ORF Size: 3297 bp
OTI Disclaimer: The molecular sequence of this clone aligns with the gene accession number as a point of reference only. However, individual transcript sequences of the same gene can differ through naturally occurring variations (e.g. polymorphisms), each with its own valid existence. This clone is substantially in agreement with the reference, but a complete review of all prevailing variants is recommended prior to use. [More info](#)
OTI Annotation: This clone was engineered to express the complete ORF with an expression tag. Expression varies depending on the nature of the gene.
Components: The ORF clone is ion-exchange column purified and shipped in a 2D barcoded Matrix tube containing 10ug of transfection-ready, dried plasmid DNA (reconstitute with 100 ul of water).
Reconstitution Method:

1. Centrifuge at 5,000xg for 5min.
2. Carefully open the tube and add 100ul of sterile water to dissolve the DNA.
3. Close the tube and incubate for 10 minutes at room temperature.
4. Briefly vortex the tube and then do a quick spin (less than 5000xg) to concentrate the liquid at the bottom.
5. Store the suspended plasmid at -20°C. The DNA is stable for at least one year from date of shipping when stored at -20°C.

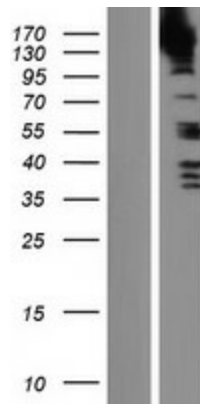
RefSeq: [NM_014850.4](#)
RefSeq Size: 8901 bp
RefSeq ORF: 3300 bp
Locus ID: 9901

UniProt ID: [O43295](#)
Cytogenetics: 3p25.3
Domains: RhoGAP, FCH, SH3
Protein Pathways: Axon guidance
MW: 124.3 kDa
Gene Summary: GTPase-activating protein for RAC1 and perhaps Cdc42, but not for RhoA small GTPase. May attenuate RAC1 signaling in neurons.[UniProtKB/Swiss-Prot Function]

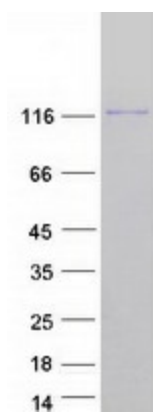
Product images:



Circular map for RC214288



Western blot validation of overexpression lysate (Cat# [LY414980]) using anti-DDK antibody (Cat# [TA50011-100]). Left: Cell lysates from untransfected HEK293T cells; Right: Cell lysates from HEK293T cells transfected with RC214288 using transfection reagent MegaTran 2.0 (Cat# [TT210002]).



Coomassie blue staining of purified SRGAP3 protein (Cat# [TP314288]). The protein was produced from HEK293T cells transfected with SRGAP3 cDNA clone (Cat# RC214288) using MegaTran 2.0 (Cat# [TT210002]).