

## Product datasheet for **RC214286**

### SMARCD2 (NM\_001098426) Human Tagged ORF Clone

#### Product data:

Product Type:	Expression Plasmids
Product Name:	SMARCD2 (NM_001098426) Human Tagged ORF Clone
Tag:	Myc-DDK
Symbol:	SMARCD2
Synonyms:	BAF60B; CRACD2; PRO2451; Rsc6p; SGD2
Mammalian Cell Selection:	Neomycin
Vector:	pCMV6-Entry (PS100001)
E. coli Selection:	Kanamycin (25 ug/mL)



[View online »](#)

**ORF Nucleotide Sequence:**

>RC214286 representing NM\_001098426  
 Red=Cloning site Blue=ORF Green=Tags(s)

TTTTGTAATACGACTCACTATAGGGCGGCCGGGAATTCGTCGACTGGATCCGGTACCGAGGAGATCTGCC  
 GCC**CGGATCGCC**

ATGTCGGGCCGAGGCGGGCGGGTCCCGCTGCCCCCGCTAAGCCCTGGCGGCGGCCGCTGGCTGCGG  
 CCCTGGGAGCGCCGCTCCCCCGGGGACCCGGCATGCTGCCCGGACCGCGCTCCGGGGACCGGGTCC  
 GGCAGGAGGCGTGGGGGCCCGGGGCCCGCCCTCCGCCCCATGGGCCCGGGGCCCGCGGCGCAG  
 TACCAGCGACCTGGCATGTCACCAGGGAACCGGATGCCCATGGCTGGCTTGCAGGTGGGACCCCTGCTG  
 GCTCCCCATTTGGTGCAGCAGCTCCGCTTCGACCTGGCATGCCACCCACCATGATGGATCCATTCGAAA  
 ACGCTGCTTGTGCCAGGCGCAGCCTCCCATGCCTGCCAGCGCCGGGGTTAAAGAGGAGGAAGATG  
 GCAGATAAGGTTCTACCTCAGCGAATCCGGGAGCTTGTCCAGAGTCTCAGGCGTACATGGATCTCTTG  
 CTTTTGAGCGGAAGCTGGACCAGACCATTGCTCGCAAGCGGATGGAGATCCAGGAGGCCATAAAAAGCC  
 TCTGACACAAAAGCGAAAGCTTCGGATCTACATTTCCAATACGTTTCAGTCCAGCAAGGCGGAAGGCGAT  
 AGTGCAGGAACTGCAGGGACCCCTGGGGGAACCCAGCAGGGGACAAGGTGGCTTCTGGGAACTCCGAG  
 TGGAAAGAAAAGTCTGGATGATCCTAGCAAACAGAAGAGGAAGTTTTCTTCATTCTTAAAGAGCCTCGT  
 CATTGAGCTGGACAAGGAGCTGTACGGGCTGACAATCACCTGGTGGAGTGGCACCCGGATGCCACCACC  
 CAGGAGACAGATGGCTTCCAAGTAAAACGGCCTGGAGACCTCAACGTCAAGTGCACCCTCCTGCTCATGC  
 TGGATCATCAGCCTCCCCAGTACAAATTGGACCCCGATTGGCAAGGCTGCTGGGAGTGCACACGCGAGC  
 GAGGGCCGCCATCATGCAGGCCCTGTGGCTTTACATCAAGCACACCAGTGCAGGATGGCAGCAGCGG  
 GAGTACATCAACTGCAACCGTTACTTCCGCCAGATCTTCAGTTGTGGCCGACTCCGTTTCTCCGAGATCC  
 CCATGAAGCTGGCAGGGTTGCTGCAGCATCCAGACCCCATTTGTCATCAACCATGTCATTAGTGTCCGACC  
 TAACGACCAAGAAGACAGCCTGTTACGACATCGATGTGGAGGTGGACGACCCACTGAAGGCCCAAATG  
 AGCAATTTTCTGCCTCTACCACCAATAGCAGGAGATCGCCTCCCTTGATGTAAGATCCATGAGACCA  
 TTGAGTCCATCAACCAGCTGAAGACCCAGAGAGATTTTCATGCTCAGTTTTAGCACCGACCCCCAGGACTT  
 CATCCAGGAATGGCTCCGTTCCAGCGCCGAGACCTCAAGATCATCACTGATGTGATTGGAATCCTGAG  
 GAGGAGAGACGAGCTGCTTTCTACCACAGCCCTGGGCCAGGAAGCAGTAGGCAGGCACATCTTTGCCA  
 AGGTGCAGCAGCGAAGGCAGGAAGTGAACAGGTGCTGGGAATTCGCCTGACC

**ACGCGT**ACGCGGCCGCTCGAGCAGAAACTCATCTCAGAAGAGGATCTGGCAGCAAATGATATCCTGGATT  
 ACAAGGATGACGACGATAAGGTTTAA

**Protein Sequence:**

>RC214286 representing NM\_001098426  
 Red=Cloning site Green=Tags(s)

MSGRGAGGFPLPPLSPGGGAVAAALGAPPPPAGPGMLPGPALRPGPAGGVGGPAAAFRPMGPAGPAAQ  
 YQRPMSPGNRMPMAGLQVGPAGSPFGAAAPLRPGMPPTMMDPFRKRLLPQAQPPMPAQRRLKRRKM  
 ADKVLPRQIRELVPESQAYMDLLAFERKLDQTIARKRMEIQEAIKKPLTQKRKLRIYISNTFSPSKAEGD  
 SAGTAGTPGGTPAGDKVASWELRVEGKLLDDPSKQKRKFSFFKSLVIELDKELYGPDNHLVEWHMPPT  
 QETDGFQVKRPGDLNVKCTLLMLDHQPPQYKLDPRLARLLGVHTQTRAAIMQALWLYIKHNQLQDGH  
 EYINCNRQYFRQIFSCGRLRFSEIPMKLAGLLQHPDPIVINHVISVDPNDQKKTACYDIDVEVDDPLKAQM  
 SNFLASTTNQQEIASLDVKIETHETIESINQLKTQRDFMLSFSTDPQDFIQEWLRSQRRDLKIITDVI  
 GNPEEERRAAFYHQPWAQEAAGRHIHFAKVQRRQEQLEQVLGIRLT

**TRTRPLEQKLI**SEEDLAANDILDYKDDDDKV

**Chromatograms:**

[https://cdn.origene.com/chromatograms/mk8065\\_g04.zip](https://cdn.origene.com/chromatograms/mk8065_g04.zip)

**Restriction Sites:**

Sgfl-MluI

**Cloning Scheme:**


**ACCN:** NM\_001098426

**ORF Size:** 1593 bp

**OTI Disclaimer:** The molecular sequence of this clone aligns with the gene accession number as a point of reference only. However, individual transcript sequences of the same gene can differ through naturally occurring variations (e.g. polymorphisms), each with its own valid existence. This clone is substantially in agreement with the reference, but a complete review of all prevailing variants is recommended prior to use. [More info](#)

**OTI Annotation:** This clone was engineered to express the complete ORF with an expression tag. Expression varies depending on the nature of the gene.

**Components:** The ORF clone is ion-exchange column purified and shipped in a 2D barcoded Matrix tube containing 10ug of transfection-ready, dried plasmid DNA (reconstitute with 100 ul of water).

- Reconstitution Method:**
1. Centrifuge at 5,000xg for 5min.
  2. Carefully open the tube and add 100ul of sterile water to dissolve the DNA.
  3. Close the tube and incubate for 10 minutes at room temperature.
  4. Briefly vortex the tube and then do a quick spin (less than 5000xg) to concentrate the liquid at the bottom.
  5. Store the suspended plasmid at -20°C. The DNA is stable for at least one year from date of shipping when stored at -20°C.

**RefSeq:** [NM\\_001098426.2](#)

**RefSeq Size:** 2770 bp

**RefSeq ORF:** 1596 bp

**Locus ID:** 6603

**UniProt ID:** [Q92925](#)

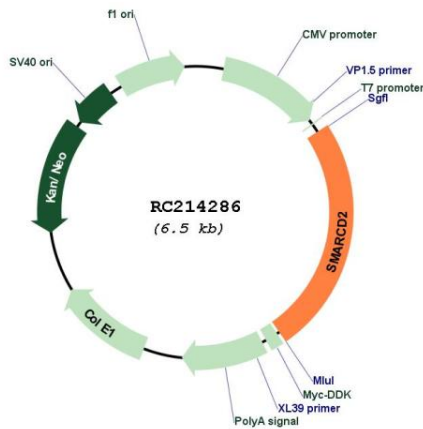
**Cytogenetics:** 17q23.3

**Protein Families:** Transcription Factors

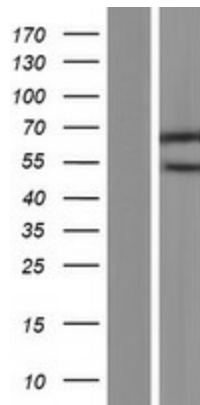
**MW:** 58.7 kDa

**Gene Summary:** The protein encoded by this gene is a member of the SWI/SNF family of proteins, whose members display helicase and ATPase activities and which are thought to regulate transcription of certain genes by altering the chromatin structure around those genes. The encoded protein is part of the large ATP-dependent chromatin remodeling complex SNF/SWI and has sequence similarity to the yeast Swp73 protein. Alternatively spliced transcript variants encoding different isoforms have been found for this gene. [provided by RefSeq, Jul 2008]

**Product images:**



Circular map for RC214286



Western blot validation of overexpression lysate (Cat# [LY420583]) using anti-DDK antibody (Cat# [TA50011-100]). Left: Cell lysates from untransfected HEK293T cells; Right: Cell lysates from HEK293T cells transfected with RC214286 using transfection reagent MegaTran 2.0 (Cat# [TT210002]).