

Product datasheet for RC214285

FLT4 (NM_182925) Human Tagged ORF Clone

Product data:

Product Type:	Expression Plasmids
Product Name:	FLT4 (NM_182925) Human Tagged ORF Clone
Tag:	Myc-DDK
Symbol:	FLT4
Synonyms:	CHTD7; FLT-4; FLT41; LMPH1A; LMPHM1; PCL; VEGFR-3; VEGFR3
Mammalian Cell Selection:	Neomycin
Vector:	pCMV6-Entry (PS100001)
E. coli Selection:	Kanamycin (25 ug/mL)
ORF Nucleotide Sequence:	>RC214285 representing NM_182925 Red=Cloning site Blue=ORF Green=Tags(s)

TTTTGTAATACGACTCACTATAGGGCGGCCGGAATTCGTCGACTGGATCCGGTACCGAGGAGATCTGCC
GCC**CGATCGCC**

ATGCAGCGGGGCGCCGCGCTGTGCCTGCGACTGTGGCTGCCTGGGACTCCTGGACGGCCTGGTGAAGT
GCTACTCCATGACCCCCCGACCTTGAACATCACGGAGGAGTACACGTCATCGACACCGGTGACAGCCT
GTCCATCTCTGCAGGGGACAGCACCCCTCGAGTGGGCTTGGCCAGGAGCTCAGGAGGCCAGCCACC
GGAGACAAGGACAGCGAGGACACGGGGTGGTGCAGACTGCGAGGGCACAGACGCCAGGCCCTACTGCA
AGGTGTTGCTGCTGCACGAGGTACATGCCAACGACACAGGAGCTACGTCTGCTACTACAAGTACATCAA
GGCAGCATCGAGGGCACACGGCCGAGCTCCTACGTGTTCTGAGAGACTTTGAGCAGCCATTCATC
AACAAAGCCTGACACGCTCTTGGTCAACAGGAAGGACGCCATGTGGGTGCCCTGTCTGGTGTCCATCCCCG
GCCTCAATGTCACGCTGCGCTCGCAAAGCTCGGTGCTGTGGCCAGACGGGAGGAGGTGGTGTGGGATGA
CCGGCGGGGATGCTCGTGTCCACGCCACTGCTGCACGATGCCCTGTACCTGCAGTGCAGAGACCCTGG
GGAGACCAGGACTTCTTTCCAACCCCTTCTGGTGCACATCACAGGCAACGAGCTCTATGACATCCAGC
TGTTGCCAGGAAGTCGCTGGAGCTGCTGGTAGGGGAGAAGCTGGTCTGAACTGCACCGTGTGGGCTGA
GTTAACTCAGGTGTACCTTTGACTGGGACTACCCAGGGAAGCAGGCAGAGCGGGGTAAGTGGGTGCC
GAGCGACGCTCCAGCAGACCCACAGAACTCTCCAGCATCTGACCATCCACAACGTCAGCCAGCAGCAG
ACCTGGGCTCGTATGTGTGCAAGGCCAACACGGCATCCAGGATTTCCGGAGAGCACCGAGGTCATTGT
GCATGAAAATCCCTTCATCAGCGTCGAGTGGCTCAAAGGACCCATCCTGGAGGCCACGGCAGGAGACGAG
CTGGTGAAGCTGCCGTGAAGCTGGCAGCGTACCCCCGCCCAGTTCAGTGGTACAAGGATGGAAGG
CACTGTCCGGGCGCCACAGTCCACATGCCCTGGTGTCAAGGAGGTGACAGAGGCCAGCACAGGCACCTA
CACCCCGCCCTGTGAACTCCGCTGCTGGCCTGAGGCGCAACATCAGCCTGGAGCTGGTGGTGAATGTG
CCCCCCAGATACATGAGAAGGAGGCTCCTCCCCAGCATCTACTCGCGTCACAGCCGCCAGGCCCTCA
CCTGCACGGCCTACGGGGTGGCCCTGCCTCAGCATCCAGTGGCACTGGCGGCCCTGGACACCCTGCAA
GATGTTTGGCCAGCGTAGTCTCCGGCGGGCAGCAGCAAGACCTCATGCCACAGTGCCGTGACTGGAGG



GCGGTGACCACGCAGGATGCCGTGAACCCCATCGAGAGCCTGGACACCTGGACCGAGTTTGTGGAGGGAA
AGAATAAGACTGTGAGCAAGCTGGTGATCCAGAATGCCAAGCTGTCTGCCATGTACAAGTGTGTGGTCTC
CAACAAGTGGGCCAGGATGAGCGGCTCATCTACTTCTATGTGACCACCATCCCCGACGGCTTACCATC
GAATCCAAGCCATCCGAGGAGCTACTAGAGGGCCAGCCGGTGCTCCTGAGCTGCCAAGCCGACAGCTACA
AGTACGAGCATCTGCGCTGGTACCGCTCAACCTGTCCACGCTGCACGATGCGCACGGGAACCCGCTTCT
GCTCGACTGCAAGAACGTGCATCTGTTCCGCCACCCCTCTGGCCGCCAGCCTGGAGGAGGTGGCACCTGGG
GCGGCCACGCCACGCTCAGCCTGAGTATCCCCCGCTGCGCCGAGCAGGAGGCCACTATGTGTGCG
AAGTGCAAGACCCGCGCAGCCATGACAAGCACTGCCACAAGAAGTACCTGTGCGTGCAGGCCCTGGAAGC
CCCTCGGCTCACGCAGAACTTGACCGACCTCCTGGTGAACGTGAGCGACTCGCTGGAGATGCAGTCTTG
GTGGCCGGAGCGCACGCGCCAGCATCGTGTGGTACAAAGACGAGAGGCTGCTGGAGAAAAGTCTGGAG
TCGACTTGGCGGACTCCAACCAGAAGCTGAGCATCCAGCGCGTGCAGGAGGATGCGGGACGCTATCT
GTGCAGCGTGTGCAACGCCAAGGGCTGCGTCAACTCCTCCGCCAGCGTGGCCGTGGAAGGCTCCGAGGAT
AAGGGCAGCATGGAGATCGTATCCTTGTGCGTACCGCGTCACTCGTGTCTTCTTCTGGGTCTCTCTC
TCCTCATCTTCTGTAACATGAGGAGGCCGCCCCACGCAGACATCAAGACGGGCTACCTGTCCATCATCAT
GGACCCCGGGGAGGTGCCTCTGGAGGAGCAATGCGAATACCTGTCTACGATGCCAGCCAGTGGGAATTC
CCCCGAGAGCGGCTGCACCTGGGAGAGTGTCTCGCTACGGCGCCTTCGGGAAGTGGTGGAAAGCCTCCG
CTTTCCGCATCCACAAGGGCAGCAGCTGTGACACCGTGGCCGTGAAAATGCTGAAAGAGGGGCCACGGC
CAGCGAGCACCGCGCTGATGTGCGAGCTCAAGATCCTCATTACATCGGAACCACTCAACGTGGTC
AACCTCCTCGGGCGTGCACCAAGCCGACGGGCCCTCATGGTATCGTGGAGTTCTGCAAGTACGGCA
ACCTCTCAACTTCTGCGCGCCAAGCGGGACGCTTACGCCCTGCGCGGAGAAGTCTCCCGAGCAGCG
CGGACGCTTCCGCGCCATGGTGGAGCTCGCCAGGCTGGATCGGAGGCGCCGGGGAGCAGCGACAGGGTC
CTCTTCCGCGGTTCTCGAAGACCGAGGGCGGAGCGAGGCGGGCTTCTCCAGACCAAGAAGCTGAGGACC
TGTGGCTGAGCCCGTACCATGGAAGATCTTGTCTGCTACAGCTTCCAGGTGGCCAGAGGGATGGAGTT
CCTGGCTTCCCGAAGTGCATCCACAGAGACTGGCTGCTCGGAACATTCTGCTGTGCGAAAGCGACGTG
GTGAAGATCTGTGACTTTGGCCTTCCCGGGACATCTACAAGACCCCTGACTACGTCCGCAAGGGCAGTG
CCCGGCTGCCCTGAAAGTGGATGGCCCCTGAAAGCATCTTCGACAAGGTGTACACCACGCAGAGTGACGT
GTGGTCTTTGGGGTCTTCTCTGGGAGATCTTCTCTCTGGGGCCTCCCGTACCCTGGGGTGCAGATC
AATGAGGAGTTCTGCCAGCGGCTGAGAGACGGCACAAGGATGAGGGCCCCGGAGCTGGCCACTCCCGCCA
TACGCCGATCATGCTGAACTGTGGTCCGGAGACCCCAAGGCGAGACCTGCATTCTCGGAGCTGGTGG
GATCCTGGGGACCTGCTCCAGGGCAGGGGCTGCAAGAGGAAGAGGAGGTCTGCATGGCCCCGCGCAGC
TCTCAGAGCTCAGAAGAGGGCAGCTTCTCGAGGTGTCCACCATGGCCCTACACATCGCCCAGGCTGACG
CTGAGGACAGCCCGCAAGCCTGCAGCGCCACAGCCTGGCCGCCAGGTATTACAACCTGGGTGTCTTTCC
CGGGTGCCTGGCCAGAGGGGCTGAGACCCGTGGTTCTCCAGGATGAAGACATTTGAGGAATTTCCCATG
ACCCCAACGACCTACAAAGGCTCTGTGGACAACCAGACAGACAGTGGGATGGTGTCTGGCCTCGGAGGAGT
TTGAGCAGATAGAGAGCAGGCATAGACAAGAAAGCGGCTTACGCTGTAAGGACCTGGCCAGAATGTGGC
TGTGACCAGGGCACACCTGACTCCAAGGGAGGCGGCGGCGCTGAGCGGGGGCCCGAGGAGGCCAG
GTGTTTTACAACAGCGAGTATGGGGAGCTGTGCGAGCCAAGCGAGGAGGACCCTGCTCCCCGTCTGCC
CGGTGACTTTCTCACAGACAACAGCTAC

ACGCGTACGCGGCCGCTCGAGCAGAACTCATCTCAGAAGAGGATCTGGCAGCAAATGATATCCTGGATT
ACAAGGATGACGACGAT AAGGTTTAA

Protein Sequence: >RC214285 representing NM_182925
Red=Cloning site Green=Tags(s)

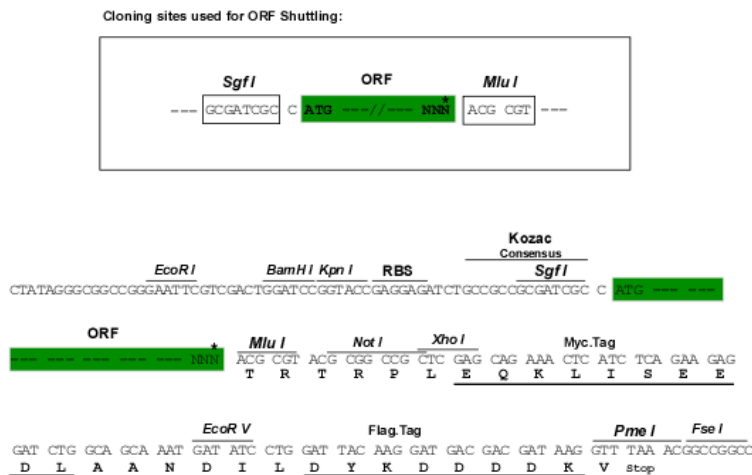
MQRGAALCLRLWLCGLLDGLVSGYSMTPTLNITEESHVIDTGDSLISICRGQHLEWAWPGAQEAPAT
 GDKDSEDGTVVRDCEGTDARPYCKVLLHEVHANDTGSYVCYKYIKARIEGTTAASSYFVRDFEQPFI
 NKPDTLLVNRKAMWVPLVSIPLNVTLSQS SVLWPDGQEVVWDDRRGMLVSTPLLHDALYLQCETTW
 GDQDFLSNPFLVHITGNELYDIQLLPRKSELLVGEKLVNCTVWAEFNSGVTFDWDYPGKQAERGKWVP
 ERRSQQTHTESSILTIHNVSQHDLSYVCKANNIGRFRSTEVIVHENPFISVWELKGPILEATAGDE
 LVKLPVKLAAYPPPEFQWYKDGKALSGRHSPHALVLKEVTEASTGTYTLALWNSAAGLRRNISLELVVNV
 PPQIHEKEASSPSIYSRHSRQAL TCTAYGVPLPLSIQWHWRPWPCKMFAQRSLRRRQQQLMPCRDWR
 AVTTQDAVNPIESLDTWTEFVEGKNKTVSKLVIQANVSAAMYKCVSNKVGQDERLIYFYVTTIPDGFTI
 ESKPSEELLEGGQPVLLSCQADSYKYEHLRWYRLNLSTLHDAHGNPLLLDCKNVHLFATPLAASLEEVAPG
 ARHATLSLSIPRVAPEHEGHYVCEVQDRRSHDKHCHKYL SVQALEAPRLTQNL TDLLVNVSDSLEMQCL
 VAGAHAPSIWVYKDERLLEEKSGVDLADSNQKLSIQRVREEDAGRYLCSVCNAKGCVNSSASVAVEGSED
 KGSMEIVILVGTGVIIVFWVLLLLIFCNMRRPAHADIKTGYLSIIMDPGEVPLEEQCEYLSYDASQWFEF
 PRERLHLGRVLGYGAFGKVVVEASAFGIHKGS SCDTVAVKMLKEGATASEHRALMSELKILIHIGNHLNVV
 NLLGACTKPQGPLMVIVEFCKYGNLSNFLRAKRD AFSPCAEKSPQGRFRAMVELARLDRRRPGSSDRV
 LFARFSKTEGGARRASPDQEAEDLWLSPLTMEDLVCYSFQVARGMEFLASRCKIHRDLAARNILLS ESDV
 VKICDFGLARDIYKDPDYVRKGSARLPLKWPAPESIFDKVYTTQSDVWSFGVLLWEIFSLGASPYGVQI
 NEEFCQRLRDGTRMAPELATPAIRRIMLNCWSDPKARPAFSELVEILGDLLQGRGLQEEEEVCMAPRS
 SQSSEEGSFSQVSTMALHIAQADAEDSPPSLQRHSLAARYYNWVSFPGCLARGAETRGS SRMKT FEEFPM
 TPTTYKGSVDNQTD SGMVLA SEEF EQIESRHRQESGF SCKGPGQNVAVTRAHPDSQGRRRRPERGARGGQ
 VFYNSEYGELSEPSEEDHCSP SARVTFFTDNSY

TRTRPLEQKLISEEDLAANDILDYKDDDDKV

Chromatograms: https://cdn.origene.com/chromatograms/mg2583_a04.zip

Restriction Sites: SgfI-MluI

Cloning Scheme:

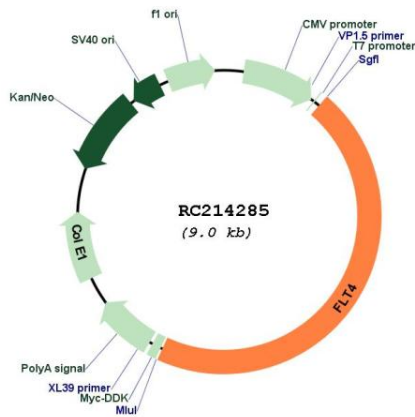


* The last codon before the Stop codon of the ORF

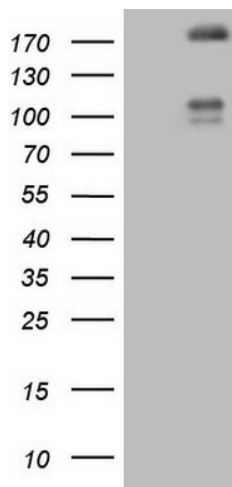
ACCN: NM_182925

ORF Size: 4089 bp

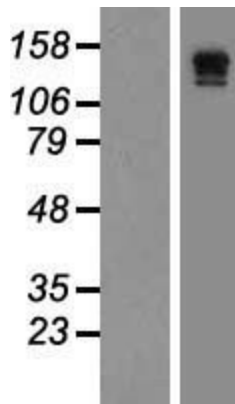
OTI Disclaimer:	<p>Due to the inherent nature of this plasmid, standard methods to replicate additional amounts of DNA in E. coli are highly likely to result in mutations and/or rearrangements. Therefore, OriGene does not guarantee the capability to replicate this plasmid DNA. Additional amounts of DNA can be purchased from OriGene with batch-specific, full-sequence verification at a reduced cost. Please contact our customer care team at custsupport@origene.com or by calling 301.340.3188 option 3 for pricing and delivery.</p> <p>The molecular sequence of this clone aligns with the gene accession number as a point of reference only. However, individual transcript sequences of the same gene can differ through naturally occurring variations (e.g. polymorphisms), each with its own valid existence. This clone is substantially in agreement with the reference, but a complete review of all prevailing variants is recommended prior to use. More info</p>
OTI Annotation:	<p>This clone was engineered to express the complete ORF with an expression tag. Expression varies depending on the nature of the gene.</p>
Components:	<p>The ORF clone is ion-exchange column purified and shipped in a 2D barcoded Matrix tube containing 10ug of transfection-ready, dried plasmid DNA (reconstitute with 100 ul of water).</p>
Reconstitution Method:	<ol style="list-style-type: none">1. Centrifuge at 5,000xg for 5min.2. Carefully open the tube and add 100ul of sterile water to dissolve the DNA.3. Close the tube and incubate for 10 minutes at room temperature.4. Briefly vortex the tube and then do a quick spin (less than 5000xg) to concentrate the liquid at the bottom.5. Store the suspended plasmid at -20°C. The DNA is stable for at least one year from date of shipping when stored at -20°C.
Note:	<p>Plasmids are not sterile. For experiments where strict sterility is required, filtration with 0.22um filter is required.</p>
RefSeq:	NM_182925.5
RefSeq Size:	4776 bp
RefSeq ORF:	4092 bp
Locus ID:	2324
UniProt ID:	P35916
Cytogenetics:	5q35.3
Protein Families:	Druggable Genome, Protein Kinase, Transmembrane
Protein Pathways:	Cytokine-cytokine receptor interaction, Focal adhesion
MW:	150.2 kDa
Gene Summary:	<p>This gene encodes a tyrosine kinase receptor for vascular endothelial growth factors C and D. The protein is thought to be involved in lymphangiogenesis and maintenance of the lymphatic endothelium. Mutations in this gene cause hereditary lymphedema type IA. [provided by RefSeq, Jul 2008]</p>

Product images:


Circular map for RC214285



HEK293T cells were transfected with the pCMV6-ENTRY control (Cat# [PS100001], Left lane) or pCMV6-ENTRY FLT4 (Cat# RC214285, Right lane) cDNA for 48 hrs and lysed. Equivalent amounts of cell lysates (5 ug per lane) were separated by SDS-PAGE and immunoblotted with anti-FLT4 (Cat# [TA806805]). Positive lysates [LY405313] (100ug) and [LC405313] (20ug) can be purchased separately from OriGene.



Western blot validation of overexpression lysate (Cat# [LY405313]) using anti-DDK antibody (Cat# [TA50011-100]). Left: Cell lysates from untransfected HEK293T cells; Right: Cell lysates from HEK293T cells transfected with RC214285 using transfection reagent MegaTran 2.0 (Cat# [TT210002]).