

Product datasheet for **RC214281**

Neurotrophin 3 (NTF3) (NM_001102654) Human Tagged ORF Clone

Product data:

Product Type:	Expression Plasmids
Product Name:	Neurotrophin 3 (NTF3) (NM_001102654) Human Tagged ORF Clone
Tag:	Myc-DDK
Symbol:	Neurotrophin 3
Synonyms:	HDNF; NGF-2; NGF2; NT-3; NT3
Mammalian Cell Selection:	Neomycin
Vector:	pCMV6-Entry (PS100001)
E. coli Selection:	Kanamycin (25 ug/mL)
ORF Nucleotide Sequence:	>RC214281 representing NM_001102654 Red=Cloning site Blue=ORF Green=Tags(s)

TTTTGTAATACGACTCACTATAGGGCGGCCGGAATTCGTCGACTGGATCCGGTACCGAGGAGATCTGCC
GCC**CGATCGCC**

ATGGTTACTTTTGCCACGATCTTACAGGTGAACAAGGTGATGTCCATCTTGTTTTATGTGATATTTCTCG
CTTATCTCCGTGGCATCCAAGGTAACAACATGGATCAAAGGAGTTTGCCAGAAGACTCGCTCAATCCCT
CATTATTAAGCTGATCCAGGCAGATATTTGAAAAACAAGCTCTCCAAGCAGATGGTGGACGTTAAGGAA
AATTACCAGAGCACCCCTGCCAAAGCTGAGGCTCCCCGAGAGCCGGAGCGGGGAGGGCCCGCAAGTCAG
CATTCCAGCCAGTGATTGCAATGGACACCGAAGTCTGCGACAACAGAGACGCTACAACCTACCGCGGGT
CCTGCTGAGCGACAGCACCCCTTGGAGCCCCGCTTGTATCTCATGGAGATTACGTGGGCAGCCCC
GTGGTGGCGAACAGAATCACGGCGAAACGGTACGCGGAGCATAAGAGTCACCGAGGGGAGTACTCGG
TATGTGACAGTGAGAGTCTGTGGGTGACCGACAAGTCAATCGGCCATCGACATTCGGGGACACCAGGTAC
GGTGTGGGGGAGATCAAAACGGGCAACTCTCCTGTCAAACAATATTTTATGAAACGGATGTAAGGAA
GCCAGGCCGGTCAAAACGGTTCAGGGGATTTGATGATAAACTGGAATCTCAGTGCAAAACATCCC
AACTACGTCCGAGCACTGACTTCAGAGAACAATAAACTCGTGGGTGGCGGTGGATACGGATAGACAC
GTCTGTGTGTGCCTGTGCGAAAAATCGGAAGAACA

ACGCGTACGCGGCCGCTCGAGCAGAACTCATCTCAGAAGAGGATCTGGCAGCAAATGATATCCTGGATT
ACAAGGATGACGACGATAAGGTTTAA



[View online »](#)

Protein Sequence: >RC214281 representing NM_001102654
 Red=Cloning site Green=Tags(s)

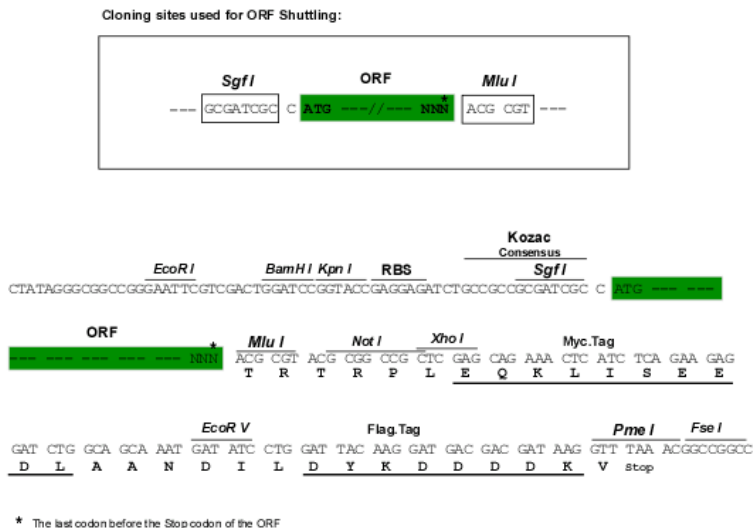
MVTFATILQVNVMSILFYVIFLAYLRGIQGNMQRSLPEDSLNSLIIKLIQADILKNKLSQMVDVKE
 NYQSTLPKAEAPREPERGGPAKSAFQPVIAMDTELLRQRRYNSPRVLLSDSTPLEPPPLYLMEDYVGSP
 VVANRTSRRKRYAEHKSHRGEYSVCDSESLWVTDKSSAIDIRGHQVTVLGEIKTGNSPVKQYFYETRCKE
 ARPVKNGCRGIDDKHWNSQCKTSQTYVRALTSENNKLVGWRWIRIDTSCVCALSRKIGRT

TRTRPLEQKLISEEDLAANDILDYKDDDDKV

Chromatograms: https://cdn.origene.com/chromatograms/mk6505_a11.zip

Restriction Sites: SgfI-MluI

Cloning Scheme:



ACCN: NM_001102654

ORF Size: 810 bp

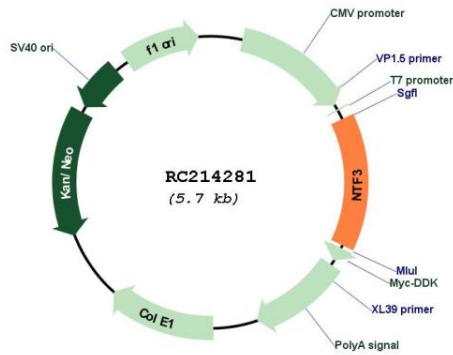
OTI Disclaimer: The molecular sequence of this clone aligns with the gene accession number as a point of reference only. However, individual transcript sequences of the same gene can differ through naturally occurring variations (e.g. polymorphisms), each with its own valid existence. This clone is substantially in agreement with the reference, but a complete review of all prevailing variants is recommended prior to use. [More info](#)

OTI Annotation: This clone was engineered to express the complete ORF with an expression tag. Expression varies depending on the nature of the gene.

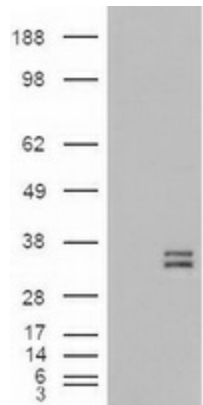
Components: The ORF clone is ion-exchange column purified and shipped in a 2D barcoded Matrix tube containing 10ug of transfection-ready, dried plasmid DNA (reconstitute with 100 ul of water).

Reconstitution Method:	<ol style="list-style-type: none">1. Centrifuge at 5,000xg for 5min.2. Carefully open the tube and add 100ul of sterile water to dissolve the DNA.3. Close the tube and incubate for 10 minutes at room temperature.4. Briefly vortex the tube and then do a quick spin (less than 5000xg) to concentrate the liquid at the bottom.5. Store the suspended plasmid at -20°C. The DNA is stable for at least one year from date of shipping when stored at -20°C.
RefSeq:	NM_001102654.1 , NP_001096124.1
RefSeq Size:	1349 bp
RefSeq ORF:	813 bp
Locus ID:	4908
UniProt ID:	P20783
Cytogenetics:	12p13.31
Protein Families:	Druggable Genome, Secreted Protein
Protein Pathways:	MAPK signaling pathway, Neurotrophin signaling pathway
MW:	30.8 kDa
Gene Summary:	<p>The protein encoded by this gene is a member of the neurotrophin family, that controls survival and differentiation of mammalian neurons. This protein is closely related to both nerve growth factor and brain-derived neurotrophic factor. It may be involved in the maintenance of the adult nervous system, and may affect development of neurons in the embryo when it is expressed in human placenta. NTF3-deficient mice generated by gene targeting display severe movement defects of the limbs. The mature peptide of this protein is identical in all mammals examined including human, pig, rat and mouse. [provided by RefSeq, Jul 2008]</p>

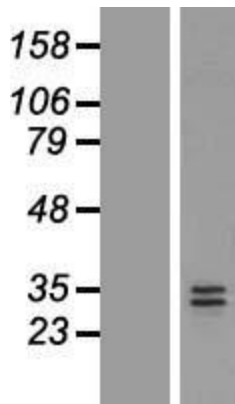
Product images:



Circular map for RC214281



HEK293T cells were transfected with the pCMV6-ENTRY control (Cat# [PS100001], Left lane) or pCMV6-ENTRY NTF3 (Cat# RC214281, Right lane) cDNA for 48 hrs and lysed. Equivalent amounts of cell lysates (5 ug per lane) were separated by SDS-PAGE and immunoblotted with anti-NTF3 (Cat# [TA500115]). Positive lysates [LY420181] (100ug) and [LC420181] (20ug) can be purchased separately from OriGene.



Western blot validation of overexpression lysate (Cat# [LY420181]) using anti-DDK antibody (Cat# [TA50011-100]). Left: Cell lysates from untransfected HEK293T cells; Right: Cell lysates from HEK293T cells transfected with RC214281 using transfection reagent MegaTran 2.0 (Cat# [TT210002]).