

Product datasheet for **RC214277**

BIN1 (NM_139346) Human Tagged ORF Clone

Product data:

Product Type:	Expression Plasmids
Product Name:	BIN1 (NM_139346) Human Tagged ORF Clone
Tag:	Myc-DDK
Symbol:	BIN1
Synonyms:	AMPH2; AMPHL; CNM2; SH3P9
Mammalian Cell Selection:	Neomycin
Vector:	pCMV6-Entry (PS100001)
E. coli Selection:	Kanamycin (25 ug/mL)



[View online »](#)

ORF Nucleotide Sequence:

>RC214277 representing NM_139346
 Red=Cloning site Blue=ORF Green=Tags(s)

TTTTGTAATACGACTCACTATAGGGCGGCCGGGAATTCGTCGACTGGATCCGGTACCGAGGAGATCTGCC
 GCC**CGGATCGCC**

ATGGCAGAGATGGGCAGTAAAGGGGTGACGGCGGAAAGATCGCCAGCAACGTGCAGAAGAAGCTCACCC
 GCGCGCAGGAGAAGTTCTCCAGAAGCTGGGGAAGGCAGATGAGACCAAGGATGAGCAGTTTGAGCAGTG
 CGTCCAGAATTTCAACAAGCAGCTGACGGAGGGCACCCGGCTGCAGAAGGATCTCCGGACCTACCTGGCC
 TCCGTCAAAGCCATGCACGAGGCTTCCAAGAAGCTGAATGAGTGTCTGCAGGAGGTGATGAGCCCGATT
 GGCCCGCAGGGATGAGGCAAACAAGATCGCAGAGAACAACGACCTGCTGTGGATGGATTACCACCAGAA
 GCTGGTGGACCAGGCGTGTGACCATGGACACGTACCTGGGCCAGTTCCCGGACATCAAGTCACGCATT
 GCCAAGCGGGGGCAAGCTGGTGGACTACGACAGTCCCGGCACCACTACGAGTCCCTTCAAAGTCCCA
 AAAAGAAGGATGAAGCCAAAATTGCCAAGGCCGAGGAGGAGCTCATCAAAGCCCAGAAGGTGTTGAGGA
 GATGAATGTGGATCTGCAGGAGGAGCTGCCGTCCCTGTGGAACAGCCGCTAGGTTTCTACGTCAACACG
 TTCCAGAGCATCGCGGGCTGGAGGAAAATTCCACAAGGAGATGAGCAAGCTCAACCAGAACCTCAATG
 ATGTGCTGGTCCGGCTGGAGAAGCAACCGGGAGCAACACCTTACGGTCAAGGCCACGCCAGAAAGAA
 AAGTAACTGTTTTCGCGGCTGCGCAGAAAAGAAGCAAGTGAACAACGCGCTGCAAAAAGGGAACAAGAGC
 CCTTCGCCTCCAGATGGCTCCCTGCGGCCACCCCGAGATCAGAGTCAACCACGAGCCAGAGCCGGCCG
 GCGGGGCCACGCCGGGGCCACCCTCCCAAGTCCCACTCAGCTCCGAAAGGCCACCAGTCCCTCC
 GCCTCCAAACACACCCCGTCCAAGGAAGTCAAGCAGGAGCAGATCCTCAGCCTGTTTGAGGACAGTGT
 GTCCCTGAGATCAGCGTGACCACCCCTCCAGCCAGCAGAGGCCCTCGGAGGTGGCGGTGGACCCAAC
 CTGCGGCTGGAGCCAGGAGCCAGGGGAGACGGCGCAAGTGAAGCAGCCTCCAGTCTCTTCTGCTGT
 CGTGGTGGAGACCTTCCAGCAACTGTGAATGGCACCGTGGAGGGCGGAGTGGGGCCGGGCGCTTGGAC
 CTGCCCCAGGTTTCATGTTCAAGGTACAGGCCAGCAGCACTACAGGCCACTGACACAGACGAGCTGC
 AGCTCAAGGCTGGTGTGTGGTGTGGTGTATCCCTTCCAGAACCCTGAAGAGCAGGATGAAGGCTGGCT
 CATGGGCGTGAAGGAGAGCGACTGGAACCAGCACAAGGAGCTGGAGAAGTCCCGTGGCGTCTTCCCGAG
 AACTTCACTGAGAGGGTCCCA

ACGCGTACGCGGCCGCTCGAGCAGAAACTCATCTCAGAAGAGGATCTGGCAGCAAATGATATCCTGGATT
 ACAAGGATGACGACGATAAGGTTTAA

Protein Sequence:

>RC214277 representing NM_139346
 Red=Cloning site Green=Tags(s)

MAEMSGKGVTAGKIASNVQKKLTRAQEKVLQKLGKADETKDEQFEQCVQNFNKQLTEGTRLQKDLRITYLA
 SVKAMHEASKKLNELQEVYEPDWPGRDEANKIAENNDLLWMDYHQKLVQALLTMDTYLGFDPDIKSRI
 AKRGRKLVYDSARHHYESLQTAKKKDEAKIAKAEELIKAQKVFEE MNVDLQEELPSLWNSRVGFYVNT
 FQSIAGLEENFHKEMSKLNQNLNDVLVGLEKQHGSNFTVKAQPRKSKLFSRLRRKNSDNAPAKGNKS
 PSPPDGSPAATPEIRVNHEPEPAGGATPGATLPKSPSQLRKPPVPPPKHTPSKEVKQEQLSLFEDTF
 VPEISVTTSPQPAEASEVAGGTQPAAGAEPGETAASEAASSSLPAVVVETFPATVNGTVEGGSGAGRLD
 LPPGFMFKVQAQHDYATDDELQLKAGDVVLVIPFQNPPEEQDEGWLMGVKESDWNQHKLEKCRGVFPE
 NFTERVP

TRTRPLEQKLISEEDLAANDILDYKDDDDKV

Chromatograms:

https://cdn.origene.com/chromatograms/mk8063_e03.zip

Restriction Sites:

Sgfl-Mlul

Cloning Scheme:

ACCN: NM_139346

ORF Size: 1491 bp

OTI Disclaimer: Due to the inherent nature of this plasmid, standard methods to replicate additional amounts of DNA in E. coli are highly likely to result in mutations and/or rearrangements. Therefore, OriGene does not guarantee the capability to replicate this plasmid DNA. Additional amounts of DNA can be purchased from OriGene with batch-specific, full-sequence verification at a reduced cost. Please contact our customer care team at custsupport@origene.com or by calling 301.340.3188 option 3 for pricing and delivery.

The molecular sequence of this clone aligns with the gene accession number as a point of reference only. However, individual transcript sequences of the same gene can differ through naturally occurring variations (e.g. polymorphisms), each with its own valid existence. This clone is substantially in agreement with the reference, but a complete review of all prevailing variants is recommended prior to use. [More info](#)

OTI Annotation: This clone was engineered to express the complete ORF with an expression tag. Expression varies depending on the nature of the gene.

Components: The ORF clone is ion-exchange column purified and shipped in a 2D barcoded Matrix tube containing 10ug of transfection-ready, dried plasmid DNA (reconstitute with 100 ul of water).

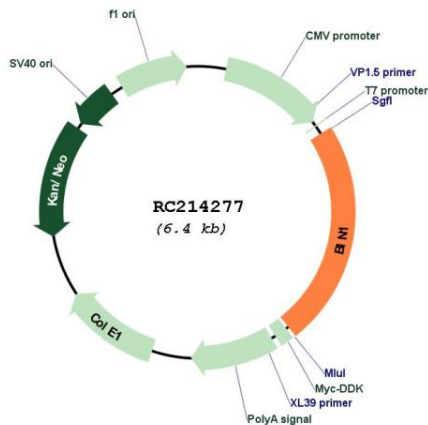
Reconstitution Method:

1. Centrifuge at 5,000xg for 5min.
2. Carefully open the tube and add 100ul of sterile water to dissolve the DNA.
3. Close the tube and incubate for 10 minutes at room temperature.
4. Briefly vortex the tube and then do a quick spin (less than 5000xg) to concentrate the liquid at the bottom.
5. Store the suspended plasmid at -20°C. The DNA is stable for at least one year from date of shipping when stored at -20°C.

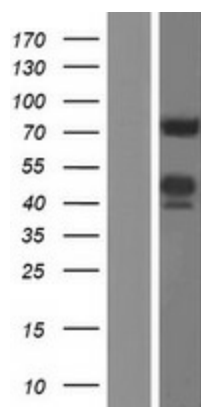
RefSeq: [NM_139346.3](#)
 RefSeq Size: 2333 bp
 RefSeq ORF: 1494 bp
 Locus ID: 274
 UniProt ID: [O00499](#)
 Cytogenetics: 2q14.3
 MW: 54.8 kDa

Gene Summary: This gene encodes several isoforms of a nucleocytoplasmic adaptor protein, one of which was initially identified as a MYC-interacting protein with features of a tumor suppressor. Isoforms that are expressed in the central nervous system may be involved in synaptic vesicle endocytosis and may interact with dynamin, synaptojanin, endophilin, and clathrin. Isoforms that are expressed in muscle and ubiquitously expressed isoforms localize to the cytoplasm and nucleus and activate a caspase-independent apoptotic process. Studies in mouse suggest that this gene plays an important role in cardiac muscle development. Alternate splicing of the gene results in several transcript variants encoding different isoforms. Aberrant splice variants expressed in tumor cell lines have also been described. [provided by RefSeq, Mar 2016]

Product images:



Circular map for RC214277



Western blot validation of overexpression lysate (Cat# [LY408305]) using anti-DDK antibody (Cat# [TA50011-100]). Left: Cell lysates from untransfected HEK293T cells; Right: Cell lysates from HEK293T cells transfected with RC214277 using transfection reagent MegaTran 2.0 (Cat# [TT210002]).