

Product datasheet for **RC214274**

PDE4C (NM_001098818) Human Tagged ORF Clone

Product data:

Product Type:	Expression Plasmids
Product Name:	PDE4C (NM_001098818) Human Tagged ORF Clone
Tag:	Myc-DDK
Symbol:	PDE4C
Synonyms:	DPDE1; PDE21
Mammalian Cell Selection:	Neomycin
Vector:	pCMV6-Entry (PS100001)
E. coli Selection:	Kanamycin (25 ug/mL)



[View online »](#)

ORF Nucleotide
Sequence:

>RC214274 representing NM_001098818
Red=Cloning site Blue=ORF Green=Tags(s)

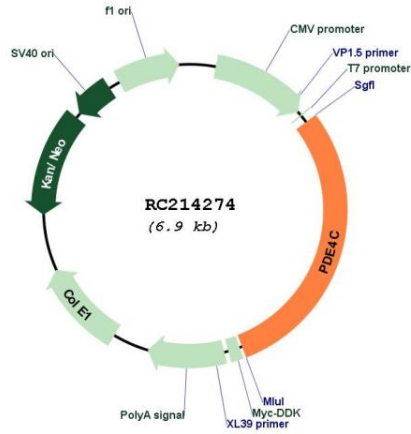
TTTTGTAATACGACTCACTATAGGGCGGCCGGGAATTCGTCGACTGGATCCGGTACCGAGGAGATCTGCC
GCCGCGATCGCC

ATGACAGGGCCCCCGCGCCCGCCCGGTCCCGGGCCCGGCTCCCTCGGGATCCCCGCGCGGCTCCC
CCGGGCTTTCAGGAAGCTTTTGGTGAATCAGAGCATCCGCTGCAGCGCGCTTACGGTGGCCATCC
GCTGTGCTTTGACCTGGAATGGGCTCTCGTGTGGGAGGAGGGCCCTGGACCCTCAGTCCAGCCCTGGC
CTGGGCGGATTATGACGGCTCCAGTCCCGCACAGCCAGCGCGGAGTCTTCTGTACCGCTCAGATA
GCGACTATGAACTCTCGCCAAGGCCATGTCTCGAACTCCTGTGGCCAGCGACCTACATGGAGAGGA
CATGATTGTGACGCCCTTTCAGGCTCTGGCCAGTCTGCGGACCGTTCGGAGCAACGTGGCGGCCCTT
GCCCGCCAGCAATGCCTAGGAGCAGCAAGCAGGGACCCGTCGGAACCCCTTCATCCAGCAATCAGTCC
CTCCTGCAGAGGACACGGGGCAGAAGCTGGCATTGGAGACGCTAGACGAGCTGGACTGGTGCCTGGATCA
GTTGGAGACGCTGCAGACCCGGCACTCGGTGGGGGAGATGGCCTCCAACAAGTTCAGCGGATCCTGAAC
CGGGAGTTGACCCACCTGTCCGAAACCAGCCGCTCCGGGAACCAGGTGTCCGAGTACATCTCCCGGACCT
TCTGGACCAGCAGACCGAGGTGGAGTGCCTAAGGTGACCGCTGAGGAGCCCCACAGCCCATGTCCCG
GATCAGTGGCCTACATGGGCTCTGCCACAGTGCACGCTCTCCTCAGCCACTGTCCACGCTTTGGGGTCC
CAGACTGACCAGGAGGCAACTGGCCAAGGAGCTAGAAGACCAACAAGTGGGGACTTGATGTGTTCA
AGGTGGCGGAGCTAAGTGGGAACCGGCCCTCACAGCTATCATATTCAGCATTTTTTCAGGAGCGGGACCT
GCTGAAGACATTCAGATCCCAGCAGACACTGGCCACTACCTGCTGATGCTGGAAGTCACTACCAC
GCCAATGTGGCTACCACAACAGCCTACATGCCCGCAGTGGCCAGTCCACGCATGTGCTGCTGGCTA
GCCTCCCTCGAGGCTGTGTTACAGACTTGGAAATCCTGGCTGCCCTTTTGAAGCGCCATCCACGA
CGTGGACCATCCTGGGGTCTCAACCAGTTTCTGATTAACACCAACTCAGAGCTGGCGCTTATGTACAAC
GACGCTCGGTGCTGGAGAACCATCACCTGGCTGTGGGCTTCAAGCTGCTGCAGGAGAGAACTGCGATA
TCTTCCAGAACCTCAGCGCCAAGCAGCGACTGAGTCTGCGCAGGATGGTCAATGACATGGTGTGGCCAC
AGACATGTCCAAACACATGAACCTCCTGGCCGACCTCAAGACCATGGTGGAGACCAAGAAGTGACAAGC
CTCGGTGTCTCCTCCTGGACAATTTCCGACCGAATCCAGGTCTTGCAGAACCTGGTGCCTGTGCTG
ATCTGAGCAACCCACCAAGCCGCTGCCCTGTACCGCCAGTGGACGACCGCATCATGGCCGAGTTCTT
CCAGCAGGAGACCGCGAGCGTGTGAGTGGGCTGGACATCAGTCCATGTGTGACAAGCATAACGGCCTCA
GTGGAGAAGTCCCAGGTGGGTTTCAATTGACTACATTGCTCACCCACTGTGGGAGACTTGGGCTGACCTGG
TCCACCCAGATGCACAGGACCTGCTGGACACGCTGGAGGACAATCGAGAGTGGTACCAGAGCAAGATCCC
CCGAAGTCCCTCAGACCTCACCAACCCCGAGCGGGACGGGCTGACAGATTCCAGTTTGAAGTACTCTG
GAGGAGGCAGAGGAAGAGGATGAGGAGGAAGAAGAGGAGGGGAAGAGACAGCTTTAGCCAAAGAGGCTT
TGGAGTTGCCTGACACTGAACTCCTGTCCCTGAAGCCGGCCAGACCCTGGGGACTTACCCCTCGACAA
CCAGAGGACT

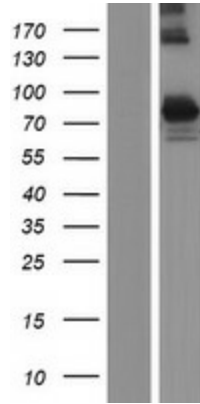
ACGCGTACGCGGCCGCTCGAGCAGAACTCATCTCAGAAGAGGATCTGGCAGCAATGATATCCTGGATT
ACAAGGATGACGACGATAAGGTTTAA

Components:	The ORF clone is ion-exchange column purified and shipped in a 2D barcoded Matrix tube containing 10ug of transfection-ready, dried plasmid DNA (reconstitute with 100 ul of water).
Reconstitution Method:	<ol style="list-style-type: none">1. Centrifuge at 5,000xg for 5min.2. Carefully open the tube and add 100ul of sterile water to dissolve the DNA.3. Close the tube and incubate for 10 minutes at room temperature.4. Briefly vortex the tube and then do a quick spin (less than 5000xg) to concentrate the liquid at the bottom.5. Store the suspended plasmid at -20°C. The DNA is stable for at least one year from date of shipping when stored at -20°C.
RefSeq:	NM_001098818.4
RefSeq Size:	5034 bp
RefSeq ORF:	2043 bp
Locus ID:	5143
UniProt ID:	Q08493
Cytogenetics:	19p13.11
Protein Families:	Druggable Genome
Protein Pathways:	Progesterone-mediated oocyte maturation, Purine metabolism
MW:	75.4 kDa
Gene Summary:	The protein encoded by this gene belongs to the cyclic nucleotide phosphodiesterase (PDE) family, and PDE4 subfamily. This PDE hydrolyzes the second messenger, cAMP, which is a regulator and mediator of a number of cellular responses to extracellular signals. Thus, by regulating the cellular concentration of cAMP, this protein plays a key role in many important physiological processes. Alternatively spliced transcript variants encoding different isoforms have been described for this gene.[provided by RefSeq, Jul 2011]

Product images:



Circular map for RC214274



Western blot validation of overexpression lysate (Cat# [LY420350]) using anti-DDK antibody (Cat# [TA50011-100]). Left: Cell lysates from untransfected HEK293T cells; Right: Cell lysates from HEK293T cells transfected with RC214274 using transfection reagent MegaTran 2.0 (Cat# [TT210002]).