

Product datasheet for RC214273

MEF2B (BORCS8-MEF2B) (NM_005919) Human Tagged ORF Clone

Product data:

Product Type:	Expression Plasmids
Product Name:	MEF2B (BORCS8-MEF2B) (NM_005919) Human Tagged ORF Clone
Tag:	Myc-DDK
Symbol:	MEF2B
Synonyms:	LOC729991-MEF2B; MEF2B; MEF2BNB-MEF2B; RSRFR2
Mammalian Cell Selection:	Neomycin
Vector:	pCMV6-Entry (PS100001)
E. coli Selection:	Kanamycin (25 ug/mL)
ORF Nucleotide Sequence:	>RC214273 representing NM_005919 Red=Cloning site Blue=ORF Green=Tags(s)

TTTTGTAATACGACTCACTATAGGGCGGCCGGAATTCGTCGACTGGATCCGGTACCGAGGAGATCTGCC
GCC**CGATCGCC**

ATGGGGAGGAAAAAATCCAGATCTCCCGCATCTGGACCAAAGGAATCGGCAGGTGACGTTACCAAGC
GGAAGTTCGGGCTGATGAAGAAGGCCTATGAGCTGAGCGTGCTCTGTGACTGTGAGATAGCCCTCATCAT
CTTCAACAGCGCCAACCGCCTCTCCAGTATGCCAGCACGGACATGGACCGTGTGCTGCTGAAGTACACA
GAGTACAGCGAGCCCCACGAGAGCCGACCAACTGACATCCTCGAGACGCTGAAGCGGAGGGCATTG
GCCTCGATGGGCCAGAGCTGGAGCCGGATGAAGGGCCTGAGGAGCCAGGAGAGAAGTTTCGGAGGCTGGC
AGGCGAAGGGGGTGATCCGGCCTTGCCCGACCCCGGCTGTATCCTGCAGCTCCTGCTATGCCAGCCCA
GATGTGGTATACGGGCCCTTACCGCCACCAAGGCTGTGACCCAGTGGGCTTGGGGAAGCACTGCCCGCC
AGAGCCGCCCATCTCCCTTCCGACCAGCAGCCCCAAAGCCGGGCCCCAGGCCTGGTGCACCCCTCTCT
CTCACCAAGCCACCTCACCAGCAAGACACCACCCCACTGTACCTGCCGACGGAAGGGCGGAGGTGACAG
CTGCCTGGTGGCCTGGCTGGGCCCGAGGGGACTAAACACCTCCAGAAGCCTCTACAGTGGCCTGCAGA
ACCCCTGCTCCACTGCAACTCCCGGACCCCACTGGGGAGCTTCCCTTCCCTCCCGGAGGCCCCCACTG
GGGGCCGAAGCCTGGGCGAGGAGGGTCCCCAACCCGCGGCCCTCCCGCCGACCCCACTGAGTACGCA
TCAAGTCTGAGCGCCTCTCTCCGGCCCCGGGGGCCCGGCGACTTTCCTAAGACCTTCCCCTATCCCTT
GCTCCTCGCCCGGTCCCTGGCAGAGCCTCTGCGGCCTGGGCCCGCCTGCGCCGGCTGCCCTTGGCCGAC
GGCTGGCCCCGGTAGGAGATCACCCGGTGGCACCAAGCCAGAGCGCTCGCCAGGTACGGCGAGGGCACGT
GGGACCCCACTCCCTCCAGGCCTCTTACAGAGAAGACCAACAG

ACGCGTACGCGGCCGCTCGAGCAGAAACTCATCTCAGAAGAGGATCTGGCAGCAAATGATATCCTGGATT
ACAAGGATGACGACGATAAGGTTAA



[View online »](#)

Protein Sequence: >RC214273 representing NM_005919
Red=Cloning site Green=Tags(s)

MGRKKIQISRILDQRNRQVTFTKRKFLMKKAYELSVLCDCEIALIIFNSANRLFQYASTMDRVLKKT
 EYSEPHESRTNTDILETLKRRGIGLDGPELEPDEGPEEPGEKFRRLAGEGGDPALPRRL YPAAPAMPSP
 DVVYGALPPPGLGALPAQSRSPFRPAAPKAGPPGLVHPLFSPSHLTSKTPPPL YLPTEGRRSD
 LPGGLAGPRGGLNTRSRLYSGLQNPCSTATPGPPLGSFPFLPGPPVGAEAWARRVPQPAAPRRPPQSA
 SSLASLRPPGAPATFLRPSPIPCSSPGPWQSLCGLGPCAGCPWPTAGPGRRRSPGGTSPERSPGTARAR
 GDPTSLQASSEKTQQ

TRTRPLEQKLISEEDLAANDILDYKDDDDKV

Chromatograms: https://cdn.origene.com/chromatograms/mg4069_h10.zip

Restriction Sites: SgfI-MluI

Cloning Scheme:



* The last codon before the Stop codon of the ORF

ACCN: NM_005919

ORF Size: 1095 bp

OTI Disclaimer: The molecular sequence of this clone aligns with the gene accession number as a point of reference only. However, individual transcript sequences of the same gene can differ through naturally occurring variations (e.g. polymorphisms), each with its own valid existence. This clone is substantially in agreement with the reference, but a complete review of all prevailing variants is recommended prior to use. [More info](#)

OTI Annotation: This clone was engineered to express the complete ORF with an expression tag. Expression varies depending on the nature of the gene.

Components: The ORF clone is ion-exchange column purified and shipped in a 2D barcoded Matrix tube containing 10ug of transfection-ready, dried plasmid DNA (reconstitute with 100 ul of water).

Reconstitution Method:

1. Centrifuge at 5,000xg for 5min.
2. Carefully open the tube and add 100ul of sterile water to dissolve the DNA.
3. Close the tube and incubate for 10 minutes at room temperature.
4. Briefly vortex the tube and then do a quick spin (less than 5000xg) to concentrate the liquid at the bottom.
5. Store the suspended plasmid at -20°C. The DNA is stable for at least one year from date of shipping when stored at -20°C.

RefSeq: [NM_005919.4](#)

RefSeq Size: 1671 bp

RefSeq ORF: 1098 bp

Locus ID: 4207

UniProt ID: [Q02080](#)

Cytogenetics: 19p13.11

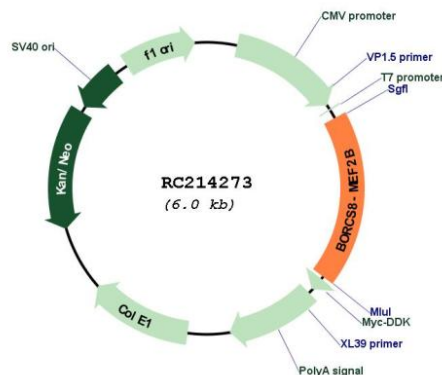
Domains: MADS

Protein Families: Transcription Factors

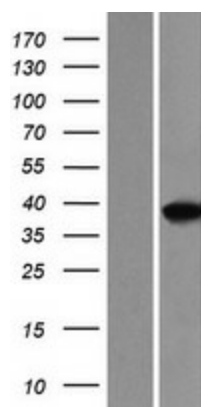
MW: 38.5 kDa

Gene Summary: This gene represents numerous read-through transcripts that span GeneID:729991 and 100271849. Many read-through transcripts are predicted to be nonsense-mediated decay (NMD) candidates, and are thought to be non-coding. Some transcripts are predicted to be capable of translation reinitiation at a downstream AUG, resulting in expression of at least one isoform of myocyte enhancer factor 2B (MEF2B) from this read-through locus. At least one additional MEF2B variant and isoform can be expressed from a downstream promoter, and is annotated on GeneID:100271849. [provided by RefSeq, Oct 2010]

Product images:



Circular map for RC214273



Western blot validation of overexpression lysate (Cat# [LY416983]) using anti-DDK antibody (Cat# [TA50011-100]). Left: Cell lysates from untransfected HEK293T cells; Right: Cell lysates from HEK293T cells transfected with RC214273 using transfection reagent MegaTran 2.0 (Cat# [TT210002]).