

Product datasheet for **RC214267**

RS1 (NM_000330) Human Tagged ORF Clone

Product data:

Product Type:	Expression Plasmids
Product Name:	RS1 (NM_000330) Human Tagged ORF Clone
Tag:	Myc-DDK
Symbol:	RS1
Synonyms:	RS; XLR51
Mammalian Cell Selection:	Neomycin
Vector:	pCMV6-Entry (PS100001)
E. coli Selection:	Kanamycin (25 ug/mL)
ORF Nucleotide Sequence:	>RC214267 representing NM_000330 Red=Cloning site Blue=ORF Green=Tags(s)

TTTTGTAATACGACTCACTATAGGGCGCCGGAATTCGTCGACTGGATCCGGTACCGAGGAGATCTGCC
GCC**CGATCGCC**

ATGTCACGCAAGATAGAAGGCTTTTTGTTACTTCTCTTTGGCTATGAAGCCACATTGGGATTATCGT
CTACCGAGGATGAAGGCGAGGACCCCTGGTACCAAAAAGCATGCAAGTGCATTGCCAAGGAGGACCCAA
TGCTCTGTGGTCTGCAGGTGCCACCTCCTGGACTGTATACCAGAATGCCATATCACAAGCCTCTGGT
TTCGAGTCAGGGGAGGTACACCGGACCAGATCACCTGCTCAACCCGGAGCAGTATGTGGGCTGGTATT
CTTCGTGGACTGCAACAAGGCCCGGCTCAACAGTCAAGGCTTTGGGTGTGCCTGGCTCTCAAGTTCCA
GGACAGTAGCCAGTGGTTACAGATAGATCTGAAGGAGATCAAAGTGATTTAGGGATCCTCACCCAGGGG
CGCTGTGACATCGATGAGTGGATGACCAAGTACAGCGTGACAGTACAGGACCGATGAGCGCCTGAAGTGA
TTACTACAAGGACCAGACTGGAACAACCGGGTCTTCTATGGCAACTCGGACCGCACCTCCACGGTTCA
GAACCTGCTGCGGCCCCCATCATCTCCCGCTTCCGCTCATCCCGCTGCGGCTGGCAGTCCGATT
GCCATCCGGATGGAGCTGCTGGAGTGGTCAGCAAGTGTGCC

ACGCGTACGCGGCCGCTCGAGCAGAACTCATCTCAGAAGAGGATCTGGCAGCAAATGATATCCTGGATT
ACAAGGATGACGACGATAAGGTTTAA



[View online »](#)

Protein Sequence: >RC214267 representing NM_000330
Red=Cloning site Green=Tags(s)

MSRKIEGFLLLLLFGYEATLGLSSTEDEGEDPWWYQKACKCDCQGGPNALWSAGATSLDCIPECPYHKPLG
 FESGEVTPDQITCSNPEQYVWYSSWTANKARLNSQGFCAWL SKFQDSSQWLQIDLKEIKVISGILTQG
 RCDIDEDWMTKYSVQYRTDERLNIYYKDQTGNRRVYFGNSDRSTVQNLRRPPIISRIFIRLIPLGWHVRI
 AIRMELLECVSKCA

TRTRPLEQKLISEEDLAANDILDYKDDDDKV

Chromatograms: https://cdn.origene.com/chromatograms/mk6268_g03.zip

Restriction Sites: SgfI-MluI

Cloning Scheme:



ACCN: NM_000330

ORF Size: 672 bp

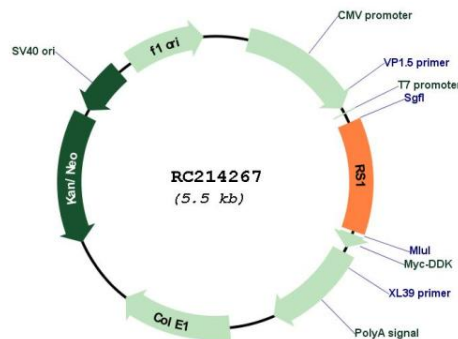
OTI Disclaimer: Due to the inherent nature of this plasmid, standard methods to replicate additional amounts of DNA in E. coli are highly likely to result in mutations and/or rearrangements. Therefore, OriGene does not guarantee the capability to replicate this plasmid DNA. Additional amounts of DNA can be purchased from OriGene with batch-specific, full-sequence verification at a reduced cost. Please contact our customer care team at custsupport@origene.com or by calling 301.340.3188 option 3 for pricing and delivery.

The molecular sequence of this clone aligns with the gene accession number as a point of reference only. However, individual transcript sequences of the same gene can differ through naturally occurring variations (e.g. polymorphisms), each with its own valid existence. This clone is substantially in agreement with the reference, but a complete review of all prevailing variants is recommended prior to use. [More info](#)

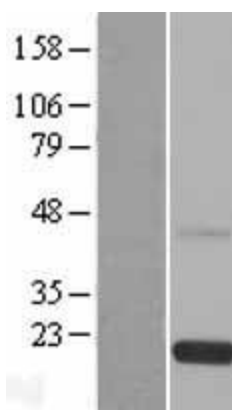
OTI Annotation: This clone was engineered to express the complete ORF with an expression tag. Expression varies depending on the nature of the gene.

Components:	The ORF clone is ion-exchange column purified and shipped in a 2D barcoded Matrix tube containing 10ug of transfection-ready, dried plasmid DNA (reconstitute with 100 ul of water).
Reconstitution Method:	<ol style="list-style-type: none"> 1. Centrifuge at 5,000xg for 5min. 2. Carefully open the tube and add 100ul of sterile water to dissolve the DNA. 3. Close the tube and incubate for 10 minutes at room temperature. 4. Briefly vortex the tube and then do a quick spin (less than 5000xg) to concentrate the liquid at the bottom. 5. Store the suspended plasmid at -20°C. The DNA is stable for at least one year from date of shipping when stored at -20°C.
RefSeq:	<u>NM_000330.4</u>
RefSeq Size:	3046 bp
RefSeq ORF:	675 bp
Locus ID:	6247
UniProt ID:	<u>O15537</u>
Cytogenetics:	Xp22.13
Protein Families:	Secreted Protein
MW:	25.59 kDa
Gene Summary:	This gene encodes an extracellular protein that plays a crucial role in the cellular organization of the retina. The encoded protein is assembled and secreted from photoreceptors and bipolar cells as a homo-oligomeric protein complex. Mutations in this gene are responsible for X-linked retinoschisis, a common, early-onset macular degeneration in males that results in a splitting of the inner layers of the retina and severe loss in vision. [provided by RefSeq, Oct 2008]

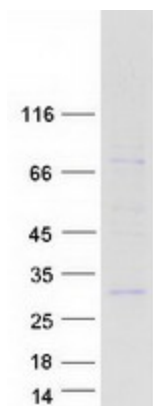
Product images:



Circular map for RC214267



Western blot validation of overexpression lysate (Cat# [LY424787]) using anti-DDK antibody (Cat# [TA50011-100]). Left: Cell lysates from untransfected HEK293T cells; Right: Cell lysates from HEK293T cells transfected with RC214267 using transfection reagent MegaTran 2.0 (Cat# [TT210002]).



Coomassie blue staining of purified RS1 protein (Cat# [TP314267]). The protein was produced from HEK293T cells transfected with RS1 cDNA clone (Cat# RC214267) using MegaTran 2.0 (Cat# [TT210002]).