

Product datasheet for RC214255

TTY8 (NR_001533) Human Tagged ORF Clone

Product data:

Product Type:	Expression Plasmids
Product Name:	TTY8 (NR_001533) Human Tagged ORF Clone
Tag:	Myc-DDK
Symbol:	TTY8
Synonyms:	LINC00130; NCRNA00130; TTY8
Mammalian Cell Selection:	Neomycin
Vector:	pCMV6-Entry (PS100001)
E. coli Selection:	Kanamycin (25 ug/mL)
ORF Nucleotide Sequence:	<p>>RC214255 representing NR_001533 Red=Cloning site Blue=ORF Green=Tags(s)</p> <p>TTTTGTAATACGACTCACTATAGGGCGGCCGGAATTCGTCGACTGGATCCGGTACCGAGGAGATCTGCCGCCGCGATCGCC</p> <p>ATGGTAGATGTGAGCCAGCCCGAAGGAACATCAAGGAGAGTTCAGGAATGAACCGTGAAATCCCTAAGGATCCAAAAGGATATGCAGAAAGAAGAGCAGCACGTCATACCCAAGACCAATCTCTCAGTGTTCACGC TAACCAAGGAGAGACACTAGCAGTCTTCTCTGCAGGACC</p> <p>ACGCGTACGCGGCCGCTCGAGCAGAAACTCATCTCAGAAGAGGATCTGGCAGCAAATGATATCCTGGATTACAAGGATGACGACGATAAGGTTTAA</p>
Protein Sequence:	<p>>RC214255 representing NR_001533 Red=Cloning site Green=Tags(s)</p> <p>MVDVVSQPEGTSRRVPGMNREIPKDPKGYAERRAARHTQDQHLVVFHANPRRDTSSLLCRT</p> <p>TRTRPLEQKLISEEDLAANDILDYKDDDDKV</p>
Chromatograms:	https://cdn.origene.com/chromatograms/mk6476_a07.zip
Restriction Sites:	Sgfl-MluI



View online »

Cloning Scheme:


ACCN: NR_001533

ORF Size: 180 bp

OTI Disclaimer: The molecular sequence of this clone aligns with the gene accession number as a point of reference only. However, individual transcript sequences of the same gene can differ through naturally occurring variations (e.g. polymorphisms), each with its own valid existence. This clone is substantially in agreement with the reference, but a complete review of all prevailing variants is recommended prior to use. [More info](#)

OTI Annotation: This clone was engineered to express the complete ORF with an expression tag. Expression varies depending on the nature of the gene.

Components: The ORF clone is ion-exchange column purified and shipped in a 2D barcoded Matrix tube containing 10ug of transfection-ready, dried plasmid DNA (reconstitute with 100 ul of water).

- Reconstitution Method:**
1. Centrifuge at 5,000xg for 5min.
 2. Carefully open the tube and add 100ul of sterile water to dissolve the DNA.
 3. Close the tube and incubate for 10 minutes at room temperature.
 4. Briefly vortex the tube and then do a quick spin (less than 5000xg) to concentrate the liquid at the bottom.
 5. Store the suspended plasmid at -20°C. The DNA is stable for at least one year from date of shipping when stored at -20°C.

RefSeq: [NR_001533.1](#)

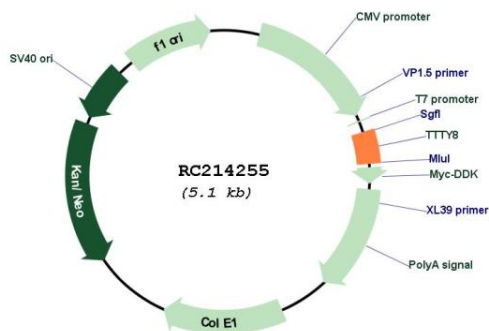
RefSeq Size: 542 bp

RefSeq ORF: 542 bp

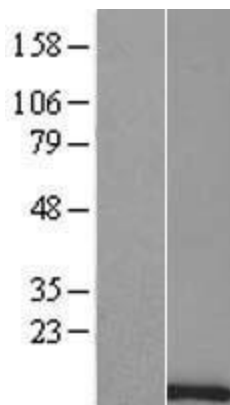
Locus ID: 84673

Cytogenetics: Yp11.2

Product images:



Circular map for RC214255



Western blot validation of overexpression lysate (Cat# [LY403760]) using anti-DDK antibody (Cat# [TA50011-100]). Left: Cell lysates from untransfected HEK293T cells; Right: Cell lysates from HEK293T cells transfected with RC214255 using transfection reagent MegaTran 2.0 (Cat# [TT210002]).