

## Product datasheet for RC214249

### CCRK (CDK20) (NM\_001039803) Human Tagged ORF Clone

#### Product data:

Product Type:	Expression Plasmids
Product Name:	CCRK (CDK20) (NM_001039803) Human Tagged ORF Clone
Tag:	Myc-DDK
Symbol:	CCRK
Synonyms:	CCRK; CDCH; P42; PNQALRE
Mammalian Cell Selection:	Neomycin
Vector:	pCMV6-Entry (PS100001)
E. coli Selection:	Kanamycin (25 ug/mL)
ORF Nucleotide Sequence:	>RC214249 representing NM_001039803 Red=Cloning site Blue=ORF Green=Tags(s)

TTTTGTAATACGACTCACTATAGGGCGGCCGGAATTCGTCGACTGGATCCGGTACCGAGGAGATCTGCC  
GCC**CGATCGCC**

ATGGACCACTACTGCATCCTGGGCCGATCGGGGAGGGCGCCACGGCATCGTCTTCAAGGCCAAGCAG  
TGGAGACTGGCGAGATAGTTGCCCTCAAGAAGGTGGCCCTAAGGCGTTGGAGGACGGCTCCCTAACCA  
GGCCCTGCGGGAGATTAAGGCTCTGCAGGAGATGGAGGACAATCAGTATGTGGTACAACGAAGGCTGTG  
TCCCACACGGTGGAGGCTTTGTGCTGGCCTTTGAGTTTCATGCTGTCGGATCTGGCCGAGGTGGTGC  
ATGCCAGAGGCCACTAGCCAGGCACAGTCAAGAGCTACCTGCAGATGCTGCTCAAGGTTGTCGCCTT  
CTGCCATGCCAACACATTGTACATCGGGACCTGAAACCTGCCAACCTGCTCATCAGCGCCTCAGGCCAG  
CTCAAGATAGCGGACTTTGGCCTGGCTCGAGTCTTTTCCCAGACGGCAGCCGCCTTACACACACCAGG  
TGGCCACCAGGTGGTACCGAGCCCCGAGCTCCTGTATGGTGCCCGCCAGTATGACCAGGGCGTCGATCT  
GTGGTCTGTGGGCTGCATCATGGGGAGCTGTTGAATGGGTCCCCCTTTTCCGGGCAAGAACGATATT  
GAACAGCTTTGCTATGTGCTTCGCATCTTGGGCACCCAAACCTCAAGTCTGGCCGGAGCTCACTGAGC  
TGCCGGACTACAACAAGATCTCCTTTAAGGAGCAGGTGCCATGCCCTGGAGGAGGTGCTGCCTGACGT  
CTCTCCCAGGCATTGGATCTGCTGGGTCAATTCCTTCTCTACCTCCTCACCAGCGCATCGCAGCTTCC  
AAGGCTCCTCCATCAGTACTTCTTACAGCTCCCCTGCCATCCATCTGAGCTGCCGATTCCCTC  
AGCGTCTAGGGGACCTGCCCCAAAGGCCATCCAGGGCCCCCACATCCATGACTTCCACGTGGACCG  
GCCTTTGAGGAGTCGCTGTTGAACCCAGAGCTGATTCGGCCCTTCATCCTGGAGGGG

**ACGCGT**ACGCGGCCGCTCGAGCAGAACTCATCTCAGAAGAGGATCTGGCAGCAAATGATATCCTGGATT  
ACAAGGATGACGACGATAAGGTTTAA



[View online »](#)

**Protein Sequence:** >RC214249 representing NM\_001039803  
Red=Cloning site Green=Tags(s)

MDQYCILGRIGEGAHGIVFKAKHVETGEIVALKKVALRRLEDGFPNQALREIKALQEMEDNQYVVQLKAV  
 FPHGGGFVLAFAEFMLSDLAEVVRHAQRPLAQAQVKSYLQMLLKGVAFCANNIVHRDLKPANLLISASGQ  
 LKIAADFLARVFSPDGSRLYTHQVATRWYRAPELLYGARQYDQGVDLWSVGCIMGELLNGSPLFPGKNDI  
 EQLCYVLRILGTPNPQVWPELTELDPYNKISFKEQVPMPLLEEVLDPVSPQALDLLGQFLLYPPHQRIAAS  
 KALLHQYFFTAPLPAHPSELPIPQRLGGPAPKAHPGPPHIDHFHVDRPLEESLLNPELIRPFILEG

TRTRPLEQKLISEEDLAANDILDYKDDDDKV

**Chromatograms:** [https://cdn.origene.com/chromatograms/mk8005\\_a12.zip](https://cdn.origene.com/chromatograms/mk8005_a12.zip)

**Restriction Sites:** SgfI-MluI

**Cloning Scheme:**

Cloning sites used for ORF Shuttling:



\* The last codon before the Stop codon of the ORF

**ACCN:** NM\_001039803

**ORF Size:** 1038 bp

**OTI Disclaimer:** The molecular sequence of this clone aligns with the gene accession number as a point of reference only. However, individual transcript sequences of the same gene can differ through naturally occurring variations (e.g. polymorphisms), each with its own valid existence. This clone is substantially in agreement with the reference, but a complete review of all prevailing variants is recommended prior to use. [More info](#)

**OTI Annotation:** This clone was engineered to express the complete ORF with an expression tag. Expression varies depending on the nature of the gene.

**Components:** The ORF clone is ion-exchange column purified and shipped in a 2D barcoded Matrix tube containing 10ug of transfection-ready, dried plasmid DNA (reconstitute with 100 ul of water).

**Reconstitution Method:**

1. Centrifuge at 5,000xg for 5min.
2. Carefully open the tube and add 100ul of sterile water to dissolve the DNA.
3. Close the tube and incubate for 10 minutes at room temperature.
4. Briefly vortex the tube and then do a quick spin (less than 5000xg) to concentrate the liquid at the bottom.
5. Store the suspended plasmid at -20°C. The DNA is stable for at least one year from date of shipping when stored at -20°C.

**RefSeq:** [NM\\_001039803.3](#)

**RefSeq Size:** 2368 bp

**RefSeq ORF:** 1041 bp

**Locus ID:** 23552

**UniProt ID:** [Q8IZL9](#)

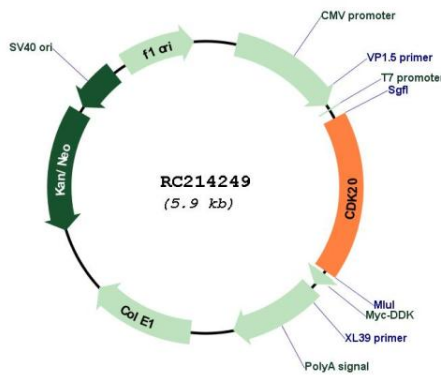
**Cytogenetics:** 9q22.1

**Protein Families:** Druggable Genome, Protein Kinase

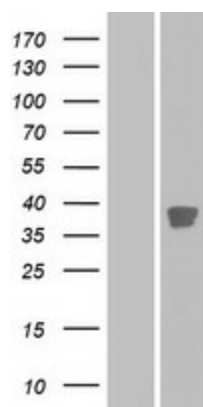
**MW:** 38.5 kDa

**Gene Summary:** The protein encoded by this gene contains a kinase domain most closely related to the cyclin-dependent protein kinases. The encoded kinase may activate cyclin-dependent kinase 2 and is involved in cell growth. Alternatively spliced transcript variants encoding distinct isoforms have been reported. [provided by RefSeq, Dec 2009]

**Product images:**



Circular map for RC214249



Western blot validation of overexpression lysate (Cat# [LY421833]) using anti-DDK antibody (Cat# [TA50011-100]). Left: Cell lysates from untransfected HEK293T cells; Right: Cell lysates from HEK293T cells transfected with RC214249 using transfection reagent MegaTran 2.0 (Cat# [TT210002]).