

## Product datasheet for **RC214244**

### **RASSF10 (NM\_001080521) Human Tagged ORF Clone**

#### **Product data:**

Product Type:	Expression Plasmids
Product Name:	RASSF10 (NM_001080521) Human Tagged ORF Clone
Tag:	Myc-DDK
Symbol:	RASSF10
Mammalian Cell Selection:	Neomycin
Vector:	pCMV6-Entry (PS100001)
E. coli Selection:	Kanamycin (25 ug/mL)



[View online »](#)

**ORF Nucleotide Sequence:**

>RC214244 representing NM\_001080521  
 Red=Cloning site Blue=ORF Green=Tags(s)

TTTTGTAATACGACTCACTATAGGGCGGCCGGAATTCGTCGACTGGATCCGGTACCGAGGAGATCTGCC  
 GCC**CGCATCGCC**

ATGGATCCTTCGAAAAGAAGATATCGGTGTGGATCTGCCAGGAAGAGAAGCTGGTGTCCGGCCTCTCCC  
 GCCGCACCACTTCTCCGACGTTGTGCGAGTGCTTTGGAGGACGGCTGCCGGCGCGACGGAGACAGCG  
 GCGGAGCCGCGCGCTGGGGTCCGGCCGGCACCAGCCATGGCCCGGAGAGCTGCCGAACCCCGAACGAG  
 GACGACGAGGACGACGACGAGGGCTGCCGAGGGCATGCTGTGCGGGCCCCGAGTGCTATTGCATCG  
 TGGAGAAGTGGCGCGCTTTGAGCGCATCTCCCAACAAGACGCGCATCTTGCCTCTGGGCTGCCTG  
 GGGCGAAGAGCAAGAGAATGTGCGCTTCGTGCTAGTGCAGGAGGATCGCTGCCTAACCGCGCCCC  
 CGCAGCGCCGAGGCGCGTGTGCTGAGCCGAGAGCGCCCTGTCCGGCCCGGGGGCCCCGGCGCGGC  
 CCAGCCTGGCCATGACCCAGGAGAAACAGCGGCGAGTGGTGCAGGCTTTTCGAAACTGGCCAAAGT  
 CAACCGCGCGCCAGCAGCAGACACCGTCTGCTGTTTCTGCTCCACTTCGTCGCTCCACTGCCTCGTCTGC  
 TCTTCGTGCGCCGGACCCAGGAGCGCGTGGTGGAGCGCATGGAGACGCTGGTGCATCTGGTGCCTT  
 CCCAGGACCACAAATTCGCCAGCAGGTGCAGCGGCTCCACGAGCTGGACCGCGAGATCGATCACTACGA  
 GGCCAAGTGCACCTGGACCGCATGCGGCGTACGCGGTTCAACTACGTGCAGGACTTACTTGGTTGGG  
 GCAGGCATCGAGCTCGACGGTCCAGACCGGGAGAGGAGCCAGAAGAGGTGGCGCGGAGGCGGAGGAGG  
 CGGCGCGCGGCCCTCTAGCCGGCGAGGCGCAGGCGCGCGCTGGAGGAGCTGGCCCGCGCTGCGA  
 CGACTTGTGCGGCTTCAGGAGCAACGGTTTACAGGAGGAGTGTGGAGCGCCTTTCAGCCGAGATT  
 CAGGAGAACTCAACCAGAGTGGATGCGACGGCCAGGAGGAGCTGGCGCGCGGGAGGAGCCCTGG  
 AGCCCGACGGTGGCCCCGACGGCGAGCTGCTGCTGGAGCAGGAACGGGTGAGGACGAGTCCAGTACCAG  
 CCTTTACATTGGGCTGCGGCTCAACACGGACTAGAGGCCGTCAAGTCGGAATTGGATTACAGCCAGCAG  
 CAATGGGACAGCAAGAAGCGGAGCTACAGGGCTTCTGCAAACTTTGCACACTTTGGAGCTGACGGTGG  
 CACCGGATGGGGCTCTGGCTCTGGCAGTCCCTCGCGGAACTGGGCTCAAGCCTGCGCCGACATGTG  
 GGTGGACCAGGCCGTGGACTGGCAAGAGCGTCTGGCAACGACGAAGACTCGGATACGGGACTGAGC  
 TCTATGCATAGCCAAGACTCGGACTCCTTGCCCATGTGCGAATCCCTTGTG

**ACGCGT**ACGCGGCCGCTCGAGCAGAACTCATCTCAGAAGAGGATCTGGCAGCAAATGATATCCTGGATT  
 ACAAGGATGACGACGATAAGGTTTAA

**Protein Sequence:**

>RC214244 representing NM\_001080521  
 Red=Cloning site Green=Tags(s)

MDPSEKKISVWICQEEKLVSGLSRRTTCSDVVRVLLLEDGCRRRRRQRRSRRLGSAGDPHGPPELPEPPNE  
 DDEDDDEALPQGMLCGPPQCYCIVEKWRGFERILPNKTRILRLWAAWGEEQENVRVLRSEASLPNAGP  
 RSAEARVVLRSRERPCARGAPARPSLAMTQEQRRVVRKAFRKLAKLNRRRRQQQTPSSCSSTSSSTASSC  
 SSSPRTHESASVERMETLVHLVLSQDHTIRQQVQRLHELDREIDHYEAKVHLDRMRRHGVNYVQDITYLVG  
 AGIELDGSRPGEEPVEVAEAEAAAAPPLAGEAQAALAEELARRCDDLRLQEQRVQVEELLERLSAEI  
 QEELNQRWRRRQEELAAREEPLEPDGGPDGELLLEQERVRTQLSTSLYIGLRLNTDLEAVKSDLDYSQQ  
 QWDSKKRELQGLLQTLHTLELTVAPDGPAGSGSPSREPGPQACADMWVDQARGLAKSGPGNDESDTGLS  
 SMHSQSDSLPMCESLV

**TR**TRPLEQKLISEEDLAANDILDYKDDDDKV

**Chromatograms:**

[https://cdn.origene.com/chromatograms/mk8030\\_g02.zip](https://cdn.origene.com/chromatograms/mk8030_g02.zip)

**Restriction Sites:**

Sgfl-MluI

**Cloning Scheme:**


**ACCN:** NM\_001080521

**ORF Size:** 1521 bp

**OTI Disclaimer:** The molecular sequence of this clone aligns with the gene accession number as a point of reference only. However, individual transcript sequences of the same gene can differ through naturally occurring variations (e.g. polymorphisms), each with its own valid existence. This clone is substantially in agreement with the reference, but a complete review of all prevailing variants is recommended prior to use. [More info](#)

**OTI Annotation:** This clone was engineered to express the complete ORF with an expression tag. Expression varies depending on the nature of the gene.

**Components:** The ORF clone is ion-exchange column purified and shipped in a 2D barcoded Matrix tube containing 10ug of transfection-ready, dried plasmid DNA (reconstitute with 100 ul of water).

**Reconstitution Method:**

1. Centrifuge at 5,000xg for 5min.
2. Carefully open the tube and add 100ul of sterile water to dissolve the DNA.
3. Close the tube and incubate for 10 minutes at room temperature.
4. Briefly vortex the tube and then do a quick spin (less than 5000xg) to concentrate the liquid at the bottom.
5. Store the suspended plasmid at -20°C. The DNA is stable for at least one year from date of shipping when stored at -20°C.

**RefSeq:** [NM\\_001080521.3](#)

**RefSeq Size:** 2698 bp

**RefSeq ORF:** 1524 bp

**Locus ID:** 644943

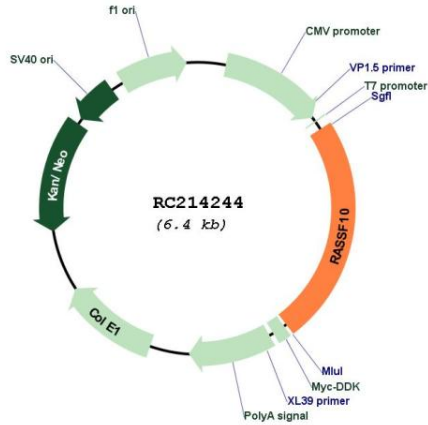
**UniProt ID:** [A6NK89](#)

**Cytogenetics:** 11p15.3

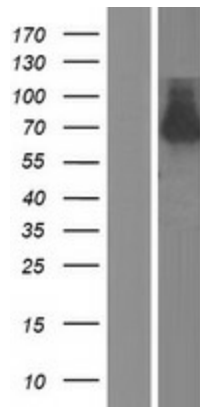
**MW:** 57.3 kDa

**Gene Summary:** Plays an important role in regulating embryonic neurogenesis.[UniProtKB/Swiss-Prot Function]

**Product images:**



Circular map for RC214244



Western blot validation of overexpression lysate (Cat# [LY421076]) using anti-DDK antibody (Cat# [TA50011-100]). Left: Cell lysates from untransfected HEK293T cells; Right: Cell lysates from HEK293T cells transfected with RC214244 using transfection reagent MegaTran 2.0 (Cat# [TT210002]).