

Product datasheet for **RC214243**

PRAME (NM_006115) Human Tagged ORF Clone

Product data:

Product Type:	Expression Plasmids
Product Name:	PRAME (NM_006115) Human Tagged ORF Clone
Tag:	Myc-DDK
Symbol:	PRAME
Synonyms:	CT130; MAPE; OIP-4; OIP4
Mammalian Cell Selection:	Neomycin
Vector:	pCMV6-Entry (PS100001)
E. coli Selection:	Kanamycin (25 ug/mL)



[View online »](#)

ORF Nucleotide Sequence:

>RC214243 representing NM_006115
 Red=Cloning site Blue=ORF Green=Tags(s)

TTTTGTAATACGACTCACTATAGGGCGGCCGGAATTCGTCGACTGGATCCGGTACCGAGGAGATCTGCC
 GCC**GCGATCGCC**

ATGGAACGAAGGCGTTTGTGGGTTCCATTAGAGCCGATACATCAGCATGAGTGTGTGGACAAGCCAC
 GGAGACTTGTGGAGCTGGCAGGGCAGAGCCTGCTGAAGGATGAGGCCCTGGCCATTGCCGCCCTGGAGTT
 GCTGCCAGGGAGCTCTCCCGCACTCTTCATGGCAGCCTTTGACGGGAGACACAGCCAGACCCCTGAAG
 GCAATGGTGCAGGCTGGCCCTCACCTGCCTCCCTCTGGGAGTCTGATGAAGGGACAACATCTTCACC
 TGGAGACCTTCAAAGCTGTGCTTGTGACTTGTGTCTCTTGGCCAGGAGGTTGCCCCAGGAGGTG
 GAACTTCAAGTCTGGATTTACGGAAGAACTCTCATCAGGACTTCTGGACTGTATGGTCTGAAACAGG
 GCCAGTCTGTACTATTTCCAGAGCCAGAAGCAGCTCAGCCCATGACAAAGAAGCGAAAAGTAGATGGTT
 TGAGCACAGAGGCAGAGCAGCCCTTTCATCCAGTAGAGGTCTCGTAGACCTGTTCTCAAGGAAGTGC
 CTGTGATGAATTGTTCTCTACCTCATTGAGAAAGTGAAGCGAAAGAAAATGTACTACGCCTGTGCTGT
 AAGAAGCTGAAGATTTTTCGAATGCCCATGCAGGATATCAAGATGATCCTGAAAAATGGTGCAGCTGGACT
 CTATTGAAGATTTGGAAGTGACTTGTACCTGGAAGCTACCCACCTTGGCGAAATTTCTCCTTACCTGGG
 CCAGATGATTAATCTGCGTAGACTCCTCCTCTCCACATCCATGCATCTTCTACATTTCCCGGAGAAG
 GAAGAGCAGTATATCGCCAGTTCACCTCTCAGTTCCTCAGTCTGCAGTGCCTGCAGGCTCTATGTGG
 ACTCTTTATTTTCTTAGAGGCCGCTGGATCAGTTCCTCAGTCTGCAGTGCCTGCAGGCTCTATGTGG
 CTCAATAACTAACTGCCGGCTTCGGAAGGGATGTGATGCATCTGTCCAGAGTCCCAGCGTCACTCAG
 CTAAGTCTCCTGAGTCTAAGTGGGTCTGCTGACCGATGAAGTCCCGAGCCCTCAAGCTCTGCTGG
 AGAGAGCCTCTGCCACCCTCCAGGACTTGTCTTTGATGAGTGTGGGATCAGGATGATCAGCTCCTTGC
 CCTCCTGCCTTCCCTGAGCCACTGCTCCAGCTTACAACCTTAAGCTTCTACGGGAATTCATCTCCATA
 TCTGCCTTGCAGAGTCTCCTGCAGCACCTCATCGGGCTGAGCAATCTGACCCACGTGCTGTATCCTGTCC
 CCCTGGAGAGTTATGAGGACATCCATGGTACCCTCCACCTGGAGAGGCTTGCCTATCTGCATGCCAGGCT
 CAGGGAGTTGCTGTGAGTTGGGGCGGCCAGCATGGTCTGGCTTAGTGCCAACCCCTGTCTCACTGT
 GGGGACAGAACCTTCTATGACCCGGAGCCATCCTGTGCCCTGTTTCATGCCTAAC

ACGCGTACGCGGCCGCTCGAGCAGAACTCATCTCAGAAGAGGATCTGGCAGCAAATGATATCCTGGATT
 ACAAGGATGACGACGATAAGGTTTAA

Protein Sequence:

>RC214243 representing NM_006115
 Red=Cloning site Green=Tags(s)

MERRRLWGSIQSRYISMSVWTSPPRRLVELAGQSLKDEALIAALELLPRELFPPLFMAAFDGRHSQTLK
 AMVQAWPFTCLPLGVLMKGQHLHLETFKAVLDGLDVLQAQEVRRRWKLQVLDLRKNSHQDFWTVVSGNR
 ASLYSFPEPEAAQPMTKRKRVDGLSTEAEPFIPVEVLVDLFLKEGACDELFSYLIEKVKRKNVLRRLCC
 KKLKIFAMPMDIKMILKMQVLDSDIEDLEVTCTWKLPTLAKFSPYLGQMINLRRLLLSHIHASSYISPEK
 EEQYIAQFTSQFLSLQCLQALYVDSLFFLRGRDQLLRHVMNPLETLSITNCRLESEGDMHLSQSPVSQ
 LSVLSLQVMLTDVSPEPLQALLERASATLQDLVFDECGITDDQLLALLPSLSHCSQLTTLQSFYGNISIS
 SALQSLQLHIGLSNLTHVLYVPLESYEDIHGTLHLERLAYLHARRELLCELGRPSMVWLSANPCPHC
 GDRTFYDPEPILCPCFMPN

TRTRPLEQKLISEEDLAANDILDYKDDDDKV

Chromatograms:

https://cdn.origene.com/chromatograms/mk6159_d10.zip

Restriction Sites:

Sgfl-Mlul

Cloning Scheme:


ACCN: NM_006115

ORF Size: 1527 bp

OTI Disclaimer: The molecular sequence of this clone aligns with the gene accession number as a point of reference only. However, individual transcript sequences of the same gene can differ through naturally occurring variations (e.g. polymorphisms), each with its own valid existence. This clone is substantially in agreement with the reference, but a complete review of all prevailing variants is recommended prior to use. [More info](#)

OTI Annotation: This clone was engineered to express the complete ORF with an expression tag. Expression varies depending on the nature of the gene.

Components: The ORF clone is ion-exchange column purified and shipped in a 2D barcoded Matrix tube containing 10ug of transfection-ready, dried plasmid DNA (reconstitute with 100 ul of water).

Reconstitution Method:

1. Centrifuge at 5,000xg for 5min.
2. Carefully open the tube and add 100ul of sterile water to dissolve the DNA.
3. Close the tube and incubate for 10 minutes at room temperature.
4. Briefly vortex the tube and then do a quick spin (less than 5000xg) to concentrate the liquid at the bottom.
5. Store the suspended plasmid at -20°C. The DNA is stable for at least one year from date of shipping when stored at -20°C.

RefSeq: [NM_006115.3](#), [NP_006106.1](#)

RefSeq Size: 2162 bp

RefSeq ORF: 1530 bp

Locus ID: 23532

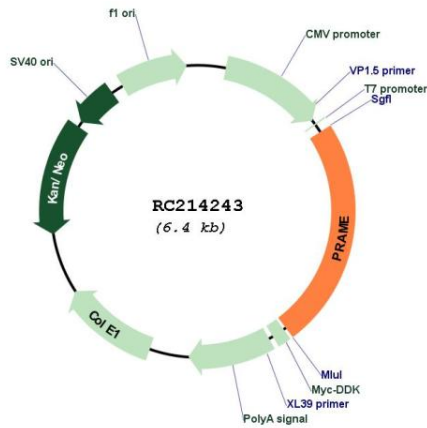
UniProt ID: [P78395](#)

Cytogenetics: 22q11.22

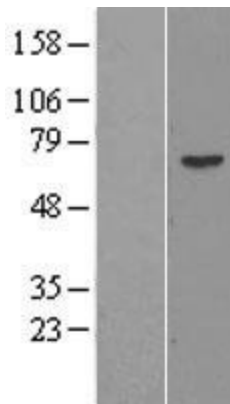
MW: 57.7 kDa

Gene Summary: This gene encodes an antigen that is preferentially expressed in human melanomas and that is recognized by cytolytic T lymphocytes. It is not expressed in normal tissues, except testis. The encoded protein acts as a repressor of retinoic acid receptor, and likely confers a growth advantage to cancer cells via this function. Alternative splicing results in multiple transcript variants. [provided by RefSeq, Apr 2014]

Product images:



Circular map for RC214243



Western blot validation of overexpression lysate (Cat# [LY401847]) using anti-DDK antibody (Cat# [TA50011-100]). Left: Cell lysates from untransfected HEK293T cells; Right: Cell lysates from HEK293T cells transfected with RC214243 using transfection reagent MegaTran 2.0 (Cat# [TT210002]).