

## Product datasheet for RC214239

### Dehydrodolichyl Diphosphate Synthase (DHDDS) (NM\_205861) Human Tagged ORF Clone

#### Product data:

Product Type:	Expression Plasmids
Product Name:	Dehydrodolichyl Diphosphate Synthase (DHDDS) (NM_205861) Human Tagged ORF Clone
Tag:	Myc-DDK
Symbol:	Dehydrodolichyl Diphosphate Synthase
Synonyms:	CIT; CPT; DEDSM; DS; hCIT; HDS; RP59
Mammalian Cell Selection:	Neomycin
Vector:	pCMV6-Entry (PS100001)
E. coli Selection:	Kanamycin (25 ug/mL)
ORF Nucleotide Sequence:	>RC214239 representing NM_205861 Red=Cloning site Blue=ORF Green=Tags(s)

TTTTGTAATACGACTCACTATAGGGCGGCCGGAATTCGTCGACTGGATCCGGTACCGAGGAGATCTGCC  
GCC**CGATCGC**C

ATGTCATGGATCAAGGAAGGAGAGCTGTCACTTTGGGAGCGGTTCTGTGCCAACATCATAAAGGCAGGCC  
CAATGCCGAAACACATTGCATTCATAATGGACGGGAACCGTCGCTATGCCAAGAAGTGCCAGGTGGAGCG  
GCAGGAAGGCCACTCACAGGGCTTCAACAAGCTAGCTGAGACTCTGCGGTGGTGTGAACTGGGCATC  
CTAGAGGTGACAGTCTACGCATTAGCATTGAGAACTTCAAACGCTCCAAGAGTGAGGTAGACGGGCTTA  
TGGATCTGGCCCGCAGAAAGTTCAGCCGCTTGATGGAAGAAAAGGAGAACTGCAGAAGCATGGGGTGTG  
TATCCGGGTCTGGGCGATCTGCACTTGTGGCCCTGGATCTCCAGGAGCTGATTGCACAAGCTGTACAG  
GCCACGAAGAACTACAACAAGTGTTCCTGAATGTCTGTTTTGCATACACATCCCGTCATGAGATCAGCA  
ATGCTGTGAGAGAGATGGCCTGGGGGTGGAGCAAGGCCTGTTGGATCCCAGTGATATCTCTGAGTCTCT  
GCTTGATAAGTGCCTCTATACCAACCGCTCTCCTCATCTGACATCTTGATACGGACTTCTGGAGAAGTG  
CGGCTGAGTGACTTCTTGCTATGGCAGACCTCTCACTCCTGCCTGGTGTTCACCCGTTCTGTGGCCAG  
AGTATACATTTTGAACCTCTTCGAGGCCATCCTGCAGTTCAGATGAACCATAGCATGCTTCAGAAGGC  
CCGAGACATGTATGCAGAGGAGCGGAAGAGGCAGCAGCTGGAGAGGGACCAGGCTACAGTGACAGAGCAG  
CTGCTGCGAGAGGGGCTCCAAGCCAGTGGGGACGCCAGCTCCGAAGGACACGCTTGACAAAACCTCGG  
CCAGACGGGAAGAGCGAGTCCAAGGCTTCTGCAGGCCTTGAAGTCAAGCGAGCTGACTGGCTGGCCCG  
TCTGGGCACTGCATCAGCC

**ACGCGT**ACGCGGCCGCTCGAGCAGAAACTCATCTCAGAAGAGGATCTGGCAGCAAATGATATCCTGGATT  
ACAAGGATGACGACGATAAGGTTTAA



[View online »](#)

**Protein Sequence:** >RC214239 representing NM\_205861  
Red=Cloning site Green=Tags(s)

MSWIKEGELSLWERFCANI I KAGPMPKHIAFIMDGNRRYAKKCQVERQEGHSQGFNKL AETLRWCLNLGI  
 LEVTVYAFS IENFKRSKSEVDGLMDLARQKFSRLMEEKEKLQKHGVCIRVLGDLHLLPLDLQELIAQAVQ  
 ATKNYNKCFLNVCFAYTSRHEISNAVREMAWGEVQGLLDP S D I S E S L L D K C L Y T N R S P H P D I L I R T S G E V  
 R L S D F L L W Q T S H S C L V F Q P V L W P E Y T F W N L F E A I L Q F Q M N H S M L Q K A R D M Y A E E R K R Q Q L E R D Q A T V T E Q  
 L L R E G L Q A S G D A Q L R R T R L H K L S A R R E E R V Q G F L Q A L E L K R A D W L A R L G T A S A

TRTRPLEQKLISEEDLAANDILDYKDDDDKV

**Chromatograms:** [https://cdn.origene.com/chromatograms/ja1477\\_f11.zip](https://cdn.origene.com/chromatograms/ja1477_f11.zip)

**Restriction Sites:** SgfI-MluI

**Cloning Scheme:**



**ACCN:** NM\_205861

**ORF Size:** 999 bp

**OTI Disclaimer:** The molecular sequence of this clone aligns with the gene accession number as a point of reference only. However, individual transcript sequences of the same gene can differ through naturally occurring variations (e.g. polymorphisms), each with its own valid existence. This clone is substantially in agreement with the reference, but a complete review of all prevailing variants is recommended prior to use. [More info](#)

**OTI Annotation:** This clone was engineered to express the complete ORF with an expression tag. Expression varies depending on the nature of the gene.

**Components:** The ORF clone is ion-exchange column purified and shipped in a 2D barcoded Matrix tube containing 10ug of transfection-ready, dried plasmid DNA (reconstitute with 100 ul of water).

**Reconstitution Method:**

1. Centrifuge at 5,000xg for 5min.
2. Carefully open the tube and add 100ul of sterile water to dissolve the DNA.
3. Close the tube and incubate for 10 minutes at room temperature.
4. Briefly vortex the tube and then do a quick spin (less than 5000xg) to concentrate the liquid at the bottom.
5. Store the suspended plasmid at -20°C. The DNA is stable for at least one year from date of shipping when stored at -20°C.

**RefSeq:** [NM\\_205861.3](#)

**RefSeq Size:** 3312 bp

**RefSeq ORF:** 1002 bp

**Locus ID:** 79947

**UniProt ID:** [Q86SQ9](#)

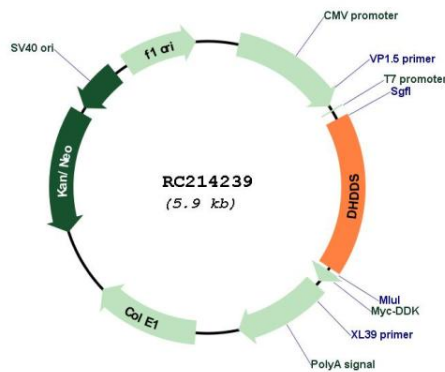
**Cytogenetics:** 1p36.11

**Protein Pathways:** Terpenoid backbone biosynthesis

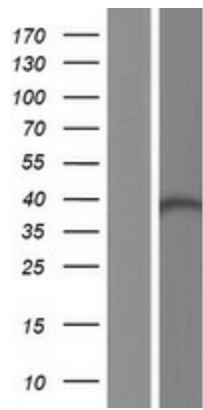
**MW:** 38.5 kDa

**Gene Summary:** The protein encoded by this gene catalyzes cis-prenyl chain elongation to produce the polyprenyl backbone of dolichol, a glycosyl carrier lipid required for the biosynthesis of several classes of glycoproteins. Mutations in this gene are associated with retinitis pigmentosa type 59. Alternatively spliced transcript variants encoding different isoforms have been described for this gene. [provided by RefSeq, Aug 2011]

**Product images:**



Circular map for RC214239



Western blot validation of overexpression lysate (Cat# [LY404209]) using anti-DDK antibody (Cat# [TA50011-100]). Left: Cell lysates from untransfected HEK293T cells; Right: Cell lysates from HEK293T cells transfected with RC214239 using transfection reagent MegaTran 2.0 (Cat# [TT210002]).