

Product datasheet for **RC214236**

LONRF3 (NM_001031855) Human Tagged ORF Clone

Product data:

Product Type:	Expression Plasmids
Product Name:	LONRF3 (NM_001031855) Human Tagged ORF Clone
Tag:	Myc-DDK
Symbol:	LONRF3
Synonyms:	RNF127
Mammalian Cell Selection:	Neomycin
Vector:	pCMV6-Entry (PS100001)
E. coli Selection:	Kanamycin (25 ug/mL)



[View online »](#)

ORF Nucleotide Sequence:

>RC214236 representing NM_001031855
 Red=Cloning site Blue=ORF Green=Tags(s)

TTTTGTAATACGACTCACTATAGGGCGGCCGGAATTCGTCGACTGGATCCGGTACCGAGGAGATCTGCC
 GCC**CGGATCGCC**

ATGGAGTCAGTACGGATCGAACAGATGCTGAGCTTGCCCGCCGAGGTCAGCAGCGACAACCTGGAGTCGG
 CGGAGCGAGGGGCATCAGCGGCCCAAGTAGACATGGGCCCCACCCAAAGGTGGCTGCAGAGGGCCCGC
 ACCTCTACCGACGCGGGAGCCAGAGCAAGAGCAGTCTCCGGGGACCTCAACGCCGGAGAGCAAAGTCCTG
 CTCACGCAGGCAGACGCCTTGGCGTCCCGGGGGCGAATCCGTGAAGCCCTCGAGGTGTATAGACAGCTCT
 CCGAGCGGCAGCAGCTGGTGGCTGAGCAGCTGGAGCAGCTGGTGCCTGCTGGCGGAGAAAGTCCCGCA
 AGGCGAGGCGCTGGCGCCGGCGCCCGGACGAGGGTAGCACTGCAAGCGGCACCGTGGCGGCGAAAGAG
 ACGGGGGCCCGCGGCTGCGGCGGCCACCGAGGTGTGGACGGCTTTAAGTGCCGAAATGTCATGGGT
 TTCTATCAGACCCCGTGTCTTGTGTGTGGCCACACCTTTTGTAACTGTGCCTGGAACGTGGCGGGC
 CGCCGACCGCGCTGTGCCTGTGCGGGTCAAGCTCTCCGCCTTGATGGTGGCCACTGGCGGGCGCGT
 GGAGCCCGGGGCTGGGCAGCAGCCGCGCCGCGCTGCGAGTCAACGTGGTGCCTCAGCGCCCTCCTCG
 GCAAGTTGTTCCAGGCCAGCGCGAGCGTCCGCAACTCCGGCACGAGGGCAACCGACTGTACCGCGAGCG
 CCAGGTGGAGGGGCACTGCTCAAGTACAACGAGGCAGTTAAGTTGGCTCCAAATGACCCTTGCTTTAT
 AGCAATCGGTCTCAGATTTATTTACCTTGGAGTCTCATGAGAATGCACTGCATGATGCAGAAATAGCAT
 GTAAGTCCGCGCGATGGGTTTTAAGGCACATTTAGAAAAGCCCAAGCCTTAGCCACCTTAGGCAAGGT
 GGAGGAGCCTAAGGGAGTTTCTACTGTGTATCCCTTGATGGAAAGAACAAGAGAGCAAGATGTGAA
 GCCCAAAGAGACAATCTGGAGCTCCACATTTGTCTAGTCAGGAGGAAGCAGCAGCCAGGGGAGATGGCA
 GCAGTCTGATGGACCCAGCTAAAGTGAAGGGGGATGGTCAAGCAGCACCATGAAAGACCAGGAAGAAGA
 GGAGGAGAAGTGGGATGCTACCTCTCCAAAAGCTGCTTCCAGCAAGACTGGAATAATGCCAGGAAAAGAAA
 AGGAAACATTGCCAGATTGAATCCCAAGAAGAAACGGGGATGCCTAATAAAGCCTCCAAGCAAGATCCTC
 CCACTGATCAGGGGGACAAACCTGCTCTCAGTTTACCCTTGCATCTTTTCGACGCATCTGACCTTGAATG
 CGCTCTATGTATGAGATTATTCTATGAGCCAGTCAACACCTTGGCGGCATACTTTTTGCTTAAATGC
 CTAGAAAGATGCCTAGATCACAACGCAAAGTGTCCATTGTCAAAGACGGTCTTTCACAGTGCTTGGCAT
 CAAGAAAATACAGCAAAAATGTAATAATGGAGGAGCTCATAGCTAAATTCCTTCCAGAAGAACTGAAGGA
 ACGAAGGAAGCTTTATGAAGAGGAAATGGAAGAACTTTCTAACCTTAATAAGAATGTGCCTATTTTCGTG
 TGTACTATGGCCTATCCACCGTTCCTTGTCCCCTGCACATCTTTGAGCCTTGTTACCGCCTGATGATTC
 GTAGATGCATTGAGACAGGCACGAGACAGTTTGGCATGTGCCTTGGAGATCCTGTCAAAGGGTTTGCAGA
 ATATGGCTGCATCCTAGAGATCAGAAATGTTCAATTCCTTGTGTATGGCCGCTCAGTGGTTGACAGCATA
 GGCAAGAGGGCGTTCAGGGTGTCCATCAGAGCCAGCGGGATGGCTACAACACAGCCGACATTGAATACA
 TTGAAGACCAAAGGTTCAAGGAGAGGATTGTGCTGAGCTCATGGGATTACATAACTGTGTCTATCAGCA
 AGCATCATTGTGGTTTCATTGCTCAAATATCCCTAAAGAATCGGATACTCAATCACTTTGGTCCCATG
 CCGGAGAAAGACCGCGATCCTCAGATGAACCCGAATGGCCAGCCTGGTGTGGTGGATGTTAGCAGTTC
 TTCCCTTGGAAAGCCGAGCTCAGCTCCCCTTCTAGCAATGAGGTCTTAAGGACAGACTGAATGGTAT
 TCGACGAGTCTGGCCTTCATATCCCGAAACCAAAC

ACGCGTACGCGGGCGCTCGAGCAGAAACTCATCTCAGAAGAGGATCTGGCAGCAAATGATATCCTGGATT
 ACAAGGATGACGACGATAAGGTTTAA

Protein Sequence: >RC214236 representing NM_001031855
Red=Cloning site Green=Tags(s)

```
MESVRIEQMLSLPAEVSSDNLESAERGASAAQVDMGPHPKVAAEGPAPLPTREPEQEQSPGTSTPESKVL
LTQADALASRGRIREALEVYRQLSERQQLVAEQLEQLVRCLAEKVPOGEALAPAPPDEGSTASGTVAEE
TGAAAAAATEVWDGFKCRKCHGFLSDPVSLSCGHTFCKLCLERGRAADRRCALCGVKLSALMVATGRAR
GARRAGQPPPLRVNVVLSGLLGLKLPFGPARASQLRHEGNRLYRERQVEAALLKYNEAVKLAPNDHLLY
SNRSQIYFTLESHENALHDAEIAACKLRPMGFKAHFRKAQALATLGKVEEALREFLYCVSLDGNKRARCE
AQRDNLLEPHCSSQEEAAARGDGSLSMDPAKVKGDGQQHMKDQEEEEKWDATSPKAASSKTGKCQEKK
RKHCQIESQEETGMPNKASKQDPPTDQGDKPALSLPLASFDAADLECALCMRLFYEPVTTPCGHTFCLKC
LERCLDHNAKCLCKDGLSQCLASRKYSKNVIMEELIAKFLPEELKERRKLYEEEMEELSNLNKNVPIFV
CTMAYPTVPCPLHIFPCYRLMIRRCIETGTRQFGMCLGDPVKGFAEYGCILEIRNVQFLADGRSVVDSI
GKRRFVRLHQSQRDGYNTADIEYIEDQKVQGEDCAELMGLHNCVYQOASLWFHSLKLSLKNRILNHFQPM
PEKDADPQMNPNGPAWCWWMLAVLPLESRAQLPFLAMRSLKDRLNGIRRVLAFISRNQN
```

TRTRPLEQKLISEEDLAANDILDYKDDDDKV

Chromatograms: https://cdn.origene.com/chromatograms/mk6164_e11.zip

Restriction Sites: SgfI-MluI

Cloning Scheme:

Cloning sites used for ORF Shuttling:



* The last codon before the Stop codon of the ORF

ACCN: NM_001031855

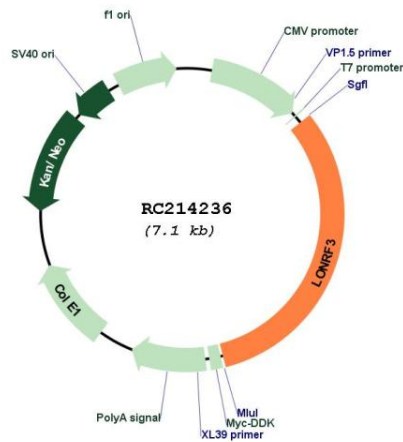
ORF Size: 2277 bp

OTI Disclaimer: The molecular sequence of this clone aligns with the gene accession number as a point of reference only. However, individual transcript sequences of the same gene can differ through naturally occurring variations (e.g. polymorphisms), each with its own valid existence. This clone is substantially in agreement with the reference, but a complete review of all prevailing variants is recommended prior to use. [More info](#)

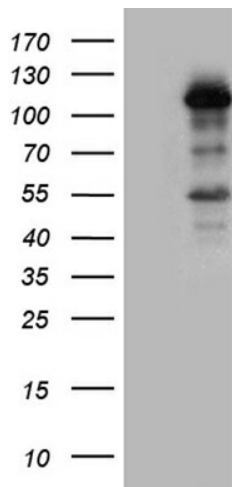
OTI Annotation: This clone was engineered to express the complete ORF with an expression tag. Expression varies depending on the nature of the gene.

Components:	The ORF clone is ion-exchange column purified and shipped in a 2D barcoded Matrix tube containing 10ug of transfection-ready, dried plasmid DNA (reconstitute with 100 ul of water).
Reconstitution Method:	<ol style="list-style-type: none"> 1. Centrifuge at 5,000xg for 5min. 2. Carefully open the tube and add 100ul of sterile water to dissolve the DNA. 3. Close the tube and incubate for 10 minutes at room temperature. 4. Briefly vortex the tube and then do a quick spin (less than 5000xg) to concentrate the liquid at the bottom. 5. Store the suspended plasmid at -20°C. The DNA is stable for at least one year from date of shipping when stored at -20°C.
RefSeq:	<u>NM_001031855.3</u>
RefSeq Size:	2625 bp
RefSeq ORF:	2280 bp
Locus ID:	79836
UniProt ID:	<u>Q496Y0</u>
Cytogenetics:	Xq24
Protein Families:	Druggable Genome, Protease
MW:	84.3 kDa
Gene Summary:	The protein encoded by this gene contains a RING finger domain, a motif present in a variety of functionally distinct proteins and known to be involved in protein-protein and protein-DNA interactions. Multiple alternatively spliced transcript variants have been suggested, but their full length natures are not clear. [provided by RefSeq, Jul 2008]

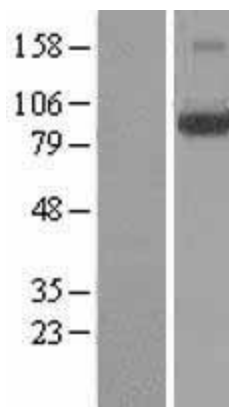
Product images:



Circular map for RC214236



HEK293T cells were transfected with the pCMV6-ENTRY control (Cat# [PS100001], Left lane) or pCMV6-ENTRY LONRF3 (Cat# RC214236, Right lane) cDNA for 48 hrs and lysed. Equivalent amounts of cell lysates (5 ug per lane) were separated by SDS-PAGE and immunoblotted with anti-LONRF3 (Cat# [TA809475])(1:500). Positive lysates [LY400406] (100ug) and [LC400406] (20ug) can be purchased separately from OriGene.



Western blot validation of overexpression lysate (Cat# [LY400406]) using anti-DDK antibody (Cat# [TA50011-100]). Left: Cell lysates from untransfected HEK293T cells; Right: Cell lysates from HEK293T cells transfected with RC214236 using transfection reagent MegaTran 2.0 (Cat# [TT210002]).