

## Product datasheet for RC214235

### SEMA6D (NM\_153618) Human Tagged ORF Clone

#### Product data:

Product Type:	Expression Plasmids
Product Name:	SEMA6D (NM_153618) Human Tagged ORF Clone
Tag:	Myc-DDK
Symbol:	SEMA6D
Mammalian Cell Selection:	Neomycin
Vector:	pCMV6-Entry (PS100001)
E. coli Selection:	Kanamycin (25 ug/mL)
ORF Nucleotide Sequence:	>RC214235 representing NM_153618 Red=Cloning site Blue=ORF Green=Tags(s)

TTTTGTAATACGACTCACTATAGGGCGGCCGGAATTCGTCGACTGGATCCGGTACCGAGGAGATCTGCCGCCGCGATCGCC

ATGAGGGTCTTCCTGCTTTGTGCCTACATACTGCTGCTGATGGTTTCCCAGTTGAGGGCAGTCAGCTTTC  
CTGAAGATGATGAACCCCTTAATACTGTGCGACTATCACTATTCAAGGCAATATCCGGTTTTAGAGGACG  
CCCTTCAGGCAATGAATCGCAGCACAGGCTGGACTTTCAGCTGATGTTGAAAATTCGAGACACACTTTAT  
ATTGCTGGCAGGGATCAAGTTTATACAGTAACTTAAATGAAATGCCAAAACAGAAGTAATACCAAACA  
AGAACTGACATGGCGATCAAGACAACAGATCGAGAAAATGTGCTATGAAAGGCAAGCATAAAGATGA  
ATGCCACAACCTTATCAAAGTATTTGTTCCAAGAACGATGAGATGGTTTTTGTGTTGTGGTACCAATGCA  
TTCAATCCCATGTGTAGATACTACAGGTTGAGTACCTTAGAATATGATGGGAAGAAATTAGTGGCTGG  
CAAGATGCCCATTTGATGCCAGACAAACCAATGTTGCCCTCTTTGCTGATGGGAAGCTGTATTCTGCCAC  
AGTGGCTGACTTCTGGCCAGCGATGCCGTTATTTATCGAAGCATGGGTGATGGATCTGCCCTTCGCACA  
ATAAAATATGATCCAAATGGATAAAAAGAGCCACACTTCTTCATGCCATAGAATATGGAACTATGTCT  
ATTTCTTCTTCGAGAAATCGCTGTGCAACATAAATTTAGGCAAGGCTGTGTATCCCGCGTGGCCCC  
CATATGTA AAAACGACATGGGTGGTCCAGCGGGTCTGGAGAAACACTGGACTTCATTCTAAAGGCT  
CGGCTGAAGTGTCTGTCCCTGGAGATTCGTTTTCTACTTTGATGTTCTGCAGTCTATTACAGACATAA  
TACAAATCAATGGCATCCCCTGTGGTGGGGTGTACCACGAGCTCAATAGCATCCCTGGTTCTGC  
TGCTGTGCATTTAGCATGGATGACATTGAAAAGTATTCAAAGGACGGTTTAAAGAACGAAAACTCCA  
GATTCTGTTTGGACAGCAGTTCCCGAAGACAAAGTGCCAAAGCCAAGGCCTGGCTGTTGTGCAAAACACG  
GCCTTGCCGAAGCTTATAAAACCTCCATCGATTCCCAGGATGAACTCTGTCAATTCATCAATCTCATCC  
CCTGATGGACTCTGCCGTTCCACCCATTGCCGATGAGCCCTGGTTCACAAAGACTCGGGTCAGGTACAGA  
CTGACGGCCATCTCAGTGGACCATTCAGCCGACCCTACCAGAACTACACAGTCACTTTGTTGGCTCTG  
AAGCTGGCATGGTACTTAAAGTTCTGGCAAAGACCAGTCTTTCTCTTTGAACGACAGCGTATTACTGGA  
AGATTGAAGCCTACAACCATGCAAAGTGCAATGCTGAGAATGAGGAAGACAAAAAGGTCATCTCATT  
CAGTTGGATAAAGATCACCACGCTTATATGTTGGCGTTCTAGCTGCATTATCCGCATCCCCCTCAGTC  
GCTGTGAGCGTTATGGATCATGTAAAAGTCTGTATTGCATCTCGTGACCCGATTGTGGCTGGTTAAG



```

CCAGGGATCCTGTGGTAGAGTGACCCAGGGATGCTTGCTGAAGGATATGAACAAGACACAGAATTCGGC
AACACAGCTCATCTAGGGGACTGCCATGAAATTTTGCCTACTTCAACTACACCAGATTACAAAATATTTG
CGGGTCCAACATCTGACATGGAGGTATCTTCATCTTCTGTTACCAATGGCAAGTATCCCGAAATCAC
ACCTAAAGTGATTGATACCTGGAGACCTAAACTGACAAGCTCTCGGAAATTTGTAGTTCAAGATGATCCA
AACACTTCTGATTTTACTGATCCTTTATCGGGTATCCCAAAGGGTGTACGATGGGAAGTCCAGTCTGGAG
AGTCCAACCAGATGGTCCACATGAATGTCTCATCACCTGTGTCTTTGCTGCTTTTGTGTTGGGGGCATT
CATTGCGAGGTGTGCAGTATACTGCTATCGAGACATGTTTGTTCGGAAAAACAGAAAGATCCATAAAGAT
GCAGAGTCCGCCAGTCATGCACAGACTCCAGTGGAAAGTTTGGCAAACCTGAATGGTCTCTTTGACAGCC
CTGTCAAGGAATACCAACAGAATATTGATTCTCCTAAACTGTATAGTAACCTGCTAACAGTCCGAAAGA
GCTACCACCCAATGGAGATACTAAATCCATGGTAAATGGACCATCGAGGGCAACCTCCAGAGTTGGCTGCT
CTTCCCCTCTGAGTCTACACCCGTGCTTACCAGAAGACCCTGCAGGCCATGAAGAGCCACTCAGAAA
AGGCCCATGGCCATGGAGCTTCAAGGAAAGAAACCCCTCAGTTTTTCCGTCTAGTCCGCCACCTCATT
CCCATAAGTCATGGGCATATCCCAGTCCATTGTTCTTCCAAATGCTACCCATGACTACAACACGTCT
TTCTCAAACCTCAATGCTCACAAGCTGAAAAGAAGCTTCAAACATTGATCACCTCTCACAAGTCAT
CCAGTAAGAGAGATCACCGGCTTCTGTTGATTCCAGAAATACCCTCAATGATCTCTGAAGCATCTGAA
TGACCCAAATAGTAACCCCAAAGCCATCATGGGAGACATCCAGATGGCACACCAGAACTTAAATGCTGGAT
CCCATGGGATCGATGCTGAGGTCCCACCTAAAGTCCCTAACCGGGAGGATCGCTATACTCCCCTCCTT
CAACTCTCCCAGAAATAGCCCAACCAAGCGAGTGGATGTCCCCACCACTCCTGGAGTCCCAATGACTTC
TCTGGAAGACAAAGAGGTTATCACAAAATTCCTCCCAGAGGCACTCTATATCTGCTATGCCTAAAAAC
TAAACTACCAAATGGTGTGTTTGTATCCAGACAGCCTAGTATGAACCGTGGAGGATATATGCCACCC
CCACTGGGGCGAAGGTGGACTATATTCAGGGAACACCAGTGAAGTTCATCTGCAGCCTCCCTCTCCAG
ACAGAGCAGCTACACCAGTAATGGCACTTCTTAGGACGGGACTAAAGAGGACCGCTCTTAAACCT
GACGTGCCACAAAGCCTTCTTTGTTCTCAAACCCATCTGTACAGACCACTGAACAAATACACATAC

```

```

ACGCGTACGCGGCCGCTCGAGCAGAAACTCATCTCAGAAGAGGATCTGGCAGCAATGATATCCTGGATT
ACAAGGATGACGACGATAAGGTTTAA

```

**Protein Sequence:**

>RC214235 representing NM\_153618  
 Red=Cloning site Green=Tags(s)

```

MRVFLLCAYILLMLVMSQLRAVSFPEDEPLNTVDYHYSRQYPVFRGRPSGNE SQHRLDFQLMLKIRDLY
IAGRDQVYTVNLEMPKTEVIPNKKLTWRSRQDRENCAMKGGKHKDECHNFIKVFVPRNDEMVFVCGTNA
FNPMCRYRLSTLEYGEEISGLARCPFDARQTNVALFADGKLYSATVADFLASDAVIYRSMGDGSLRRT
IKYDSKWIKEPHFLHAIIEYGNVYFFFREIAVEHNNLKGAVYSRVARICKNDMGGSQRVLEKHWTSFLKA
RLNCSVPGDSFFYFDVLQSIIDIIQINGIPTVVGFTTQLNSIPGSVAVCAFMSDDIEKVFGRFKEQKTP
DSVWTAVPEDKVPKPRPGCCAKHGLAEAYKTSIDFPDETLFSIKSHPLMDSAVPPIADEPWFTRVRYR
LTAISVDHSAGPYQNYTVIFVGSEAGMVLKVLAKTSPFSLNDSVLLLEEIEAYNHAKCNAENEDKKVISL
QLDKDHHALYVAFSSCIIRIPLSRCERYGSCCKSCIASRDPYCGWL SQGSCGRVTPGMLAEGYEQDTEFG
NTAHLGDCHILPTSTTPDYKIFGGPTSDMEVSSSVTMTASIPETPKVIDTWRPKLTSSRFVVDQDP
NTSDFTDPLSGIPKGVREWEVQSGESNQVMHNVLITCVFAAFVLGAFIAGVAVYCYRDMFVRKNRKIHKD
AESAQCTDSSGSFAKLNGLFDSVPVKEYQQNIDSPKLYSNLLTSRKELPPNGDTKSMVMDHRGQPPELAA
LPTPESTPVLHQKTLQAMKSHSEKAHGHASRKETPQFFPSSPPPHSPLSHGHIPSAIVLPNATHDYNTS
FSNSNAHKAIEKQLQNDHPLTKSSSRDHRHSVDSRNTLNDLLKHLNDPNSNPKAIMGDIQMAHQNLMLD
PMGSMSEVPPKVPNREASLYSPPSTLPRNSPTKRVDVPTTPGVPMTSLERQRYHKNSSQRHSISAMPKN
LNSPNGVLLSRQPSMNRGGYMPPTGAKVDYIQGTPVSVHLQPSLSRQSSYTSNGTLPRTLKRTPSLKP
DVPPKPSFVPQTPSVRPLNKYTY

```

```

TRTRPLEQKLI SEEDLAANDILDYKDDDDKV

```

**Chromatograms:**

[https://cdn.origene.com/chromatograms/mg3693\\_b09.zip](https://cdn.origene.com/chromatograms/mg3693_b09.zip)

**Restriction Sites:**

Sgfl-Mlul

**Cloning Scheme:**


**ACCN:** NM\_153618

**ORF Size:** 3219 bp

**OTI Disclaimer:** The molecular sequence of this clone aligns with the gene accession number as a point of reference only. However, individual transcript sequences of the same gene can differ through naturally occurring variations (e.g. polymorphisms), each with its own valid existence. This clone is substantially in agreement with the reference, but a complete review of all prevailing variants is recommended prior to use. [More info](#)

**OTI Annotation:** This clone was engineered to express the complete ORF with an expression tag. Expression varies depending on the nature of the gene.

**Components:** The ORF clone is ion-exchange column purified and shipped in a 2D barcoded Matrix tube containing 10ug of transfection-ready, dried plasmid DNA (reconstitute with 100 ul of water).

**Reconstitution Method:**

1. Centrifuge at 5,000xg for 5min.
2. Carefully open the tube and add 100ul of sterile water to dissolve the DNA.
3. Close the tube and incubate for 10 minutes at room temperature.
4. Briefly vortex the tube and then do a quick spin (less than 5000xg) to concentrate the liquid at the bottom.
5. Store the suspended plasmid at -20°C. The DNA is stable for at least one year from date of shipping when stored at -20°C.

**RefSeq:** [NM\\_153618.1](#), [NP\\_705871.1](#)

**RefSeq Size:** 6109 bp

**RefSeq ORF:** 3222 bp

**Locus ID:** 80031

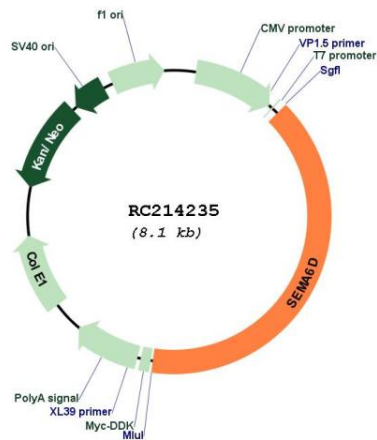
**UniProt ID:** [Q8NFY4](#)

**Cytogenetics:** 15q21.1  
**Protein Families:** Druggable Genome, Transmembrane  
**Protein Pathways:** Axon guidance

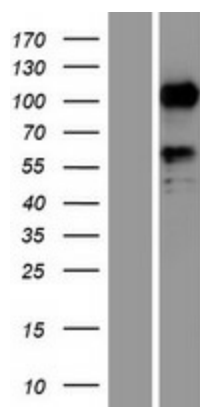
**MW:** 117.4 kDa

**Gene Summary:** Semaphorins are a large family, including both secreted and membrane associated proteins, many of which have been implicated as inhibitors or chemorepellents in axon pathfinding, fasciculation and branching, and target selection. All semaphorins possess a semaphorin (Sema) domain and a PSI domain (found in plexins, semaphorins and integrins) in the N-terminal extracellular portion. Additional sequence motifs C-terminal to the semaphorin domain allow classification into distinct subfamilies. Results demonstrate that transmembrane semaphorins, like the secreted ones, can act as repulsive axon guidance cues. This gene encodes a class 6 vertebrate transmembrane semaphorin that demonstrates alternative splicing. Several transcript variants have been identified and expression of the distinct encoded isoforms is thought to be regulated in a tissue- and development-dependent manner. [provided by RefSeq, Nov 2010]

**Product images:**



Circular map for RC214235



Western blot validation of overexpression lysate (Cat# [LY406989]) using anti-DDK antibody (Cat# [TA50011-100]). Left: Cell lysates from untransfected HEK293T cells; Right: Cell lysates from HEK293T cells transfected with RC214235 using transfection reagent MegaTran 2.0 (Cat# [TT210002]).