

Product datasheet for RC214226

Neurotrophin 3 (NTF3) (NM_002527) Human Tagged ORF Clone

Product data:

Product Type:	Expression Plasmids
Product Name:	Neurotrophin 3 (NTF3) (NM_002527) Human Tagged ORF Clone
Tag:	Myc-DDK
Symbol:	Neurotrophin 3
Synonyms:	HDNF; NGF-2; NGF2; NT-3; NT3
Mammalian Cell Selection:	Neomycin
Vector:	pCMV6-Entry (PS100001)
E. coli Selection:	Kanamycin (25 ug/mL)
ORF Nucleotide Sequence:	>RC214226 ORF sequence Red=Cloning site Blue=ORF Green=Tags(s)

TTTTGTAATACGACTCACTATAGGGCGGCCGGAATTCGTCGACTGGATCCGGTACCGAGGAGATCTGCC
GCC**CGGATCGCC**

ATGTCCATCTTGTGTTTATGTGATATTTCTCGCTTATCTCCGTGGCATCCAAGGTAACAACATGGATCAAA
GGAGTTTGCCAGAAGACTCGCTCAATTCCTCATTATTAAGCTGATCCAGGCAGATATTTTGAAAAACAA
GCTCTCCAAGCAGATGGTGGACGTTAAGGAAAATTACCAGAGCACCTGCCAAAGCTGAGGCTCCCCGA
GAGCCGGAGCGGGGAGGGCCCGCAAGTCAGATTCCAGCCAGTGATTGCAATGGACACCGAACTGCTGC
GACAACAGAGACGCTACAACCTACCGCGGGTCTGCTGAGCGACAGCACCCCTTGGAGCCCCGCCCTT
GTATCTCATGGAGGATTACGTGGGCAGCCCCGTGGTGGCGAACAGAACATCACGGCGGAAACGGTACGCG
GAGCATAAGAGTCACCGAGGGGAGTACTCGGTATGTGACAGTGAGAGTCTGTGGGTGACCGACAAGTCAT
CGGCCATCGACATTCCGGGACACCCAGGTCACGGTCTGGGGGAGATCAAAACGGGCAACTCTCCTGTCAA
ACAATATTTTTATGAAACGCGATGTAAGGAAGCCAGGCCGGTCAAAAACGGTTGCAGGGGTATTGATGAT
AAACACTGGAACCTCTCAGTGCAAAACATCCAAACCTACGTCCGAGCACTGACTTCAGAGAAACAATAAC
TCGTGGGCTGGCGGTGGATACGGATAGACACGTCTGTGTGTGCCTTGTGAGAAAAATCGGAAGAAC
A

ACGCGTACGCGGCCGCTCGAGCAGAAACTCATCTCAGAAGAGGATCTGGCAGCAAATGATATCCTGGATT
ACAAGGATGACGACGATAAGGTTTAA



[View online »](#)

Protein Sequence: >RC214226 protein sequence
 Red=Cloning site Green=Tags(s)

MSILFYVIFLAYLRGIQGNMMDQRSLPEDSLNSLI IKLIQADILKNKLSKQMV DVKENYQSTLPKAEAPR
 EPERGGPAKSAFQPVIAMDELLRQRRYNSPRVLLSDSTPLEPPPLYLMEDYVGSPPVANRTSRRKRYA
 EHKSHRGEYSVCDSESLWVTDKSSAIDIRGHQVTVLGEIKTGNSPVKQYFYETRCKEARPVKNGCRGIDD
 KHWNSQCKTSQTYVRAL TSENKLVGWRWIRIDTSCVCALSRKIGRT

TRTRPLEQKLISEEDLAANDILDYKDDDDKV

Chromatograms: https://cdn.origene.com/chromatograms/mk6448_d10.zip

Restriction Sites: SgfI-MluI

Cloning Scheme:

Cloning sites used for ORF Shuttling:



* The last codon before the Stop codon of the ORF

ACCN: NM_002527

ORF Size: 771 bp

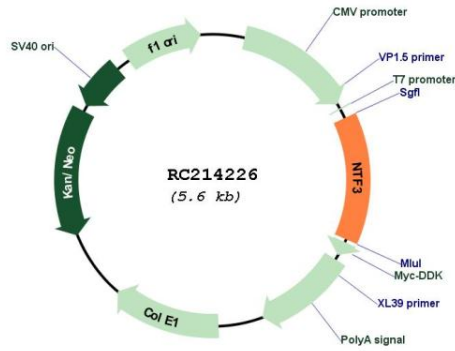
OTI Disclaimer: The molecular sequence of this clone aligns with the gene accession number as a point of reference only. However, individual transcript sequences of the same gene can differ through naturally occurring variations (e.g. polymorphisms), each with its own valid existence. This clone is substantially in agreement with the reference, but a complete review of all prevailing variants is recommended prior to use. [More info](#)

OTI Annotation: This clone was engineered to express the complete ORF with an expression tag. Expression varies depending on the nature of the gene.

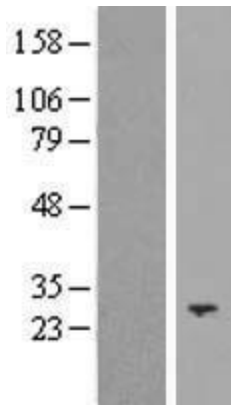
Components: The ORF clone is ion-exchange column purified and shipped in a 2D barcoded Matrix tube containing 10ug of transfection-ready, dried plasmid DNA (reconstitute with 100 ul of water).

Reconstitution Method:	<ol style="list-style-type: none">1. Centrifuge at 5,000xg for 5min.2. Carefully open the tube and add 100ul of sterile water to dissolve the DNA.3. Close the tube and incubate for 10 minutes at room temperature.4. Briefly vortex the tube and then do a quick spin (less than 5000xg) to concentrate the liquid at the bottom.5. Store the suspended plasmid at -20°C. The DNA is stable for at least one year from date of shipping when stored at -20°C.
RefSeq:	NM_002527.4
RefSeq Size:	1182 bp
RefSeq ORF:	774 bp
Locus ID:	4908
UniProt ID:	P20783
Cytogenetics:	12p13.31
Protein Families:	Druggable Genome, Secreted Protein
Protein Pathways:	MAPK signaling pathway, Neurotrophin signaling pathway
MW:	29.4 kDa
Gene Summary:	<p>The protein encoded by this gene is a member of the neurotrophin family, that controls survival and differentiation of mammalian neurons. This protein is closely related to both nerve growth factor and brain-derived neurotrophic factor. It may be involved in the maintenance of the adult nervous system, and may affect development of neurons in the embryo when it is expressed in human placenta. NTF3-deficient mice generated by gene targeting display severe movement defects of the limbs. The mature peptide of this protein is identical in all mammals examined including human, pig, rat and mouse. [provided by RefSeq, Jul 2008]</p>

Product images:



Circular map for RC214226



Western blot validation of overexpression lysate (Cat# [LY419271]) using anti-DDK antibody (Cat# [TA50011-100]). Left: Cell lysates from untransfected HEK293T cells; Right: Cell lysates from HEK293T cells transfected with RC214226 using transfection reagent MegaTran 2.0 (Cat# [TT210002]).