

Product datasheet for **RC214224**

NARG1L (NAA16) (NM_024561) Human Tagged ORF Clone

Product data:

Product Type:	Expression Plasmids
Product Name:	NARG1L (NAA16) (NM_024561) Human Tagged ORF Clone
Tag:	Myc-DDK
Symbol:	NARG1L
Synonyms:	NARG1L
Mammalian Cell Selection:	Neomycin
Vector:	pCMV6-Entry (PS100001)
E. coli Selection:	Kanamycin (25 ug/mL)



[View online »](#)

ORF Nucleotide Sequence:

>RC214224 representing NM_024561
 Red=Cloning site Blue=ORF Green=Tags(s)

TTTTGTAATACGACTCACTATAGGGCGGCCGGGAATTCGTCGACTGGATCCGGTACCGAGGAGATCTGCC
 GCC**CGGATCGCC**

ATGCCGAACGTGCTGCTGCCGCCAAGGAGAGCAACCTCTCAAACGCATCTTGAATGTTATGAACAGA
 AGCAGTACAAAAATGGCCTCAAGTTTTGCAAGATGATTCTGTCGAACCCAAAATTTGCTGAACATGGAGA
 GACTTTGGCTATGAAAGGATTAACACTGAACTGTTTAGGAAAAAAGAAGAGCTTATGAGTTTGTTCGT
 AAAGGACTTCGTAATGATGTCAAGAGTCATGTCTGTTGGCATGTATATGGACTCTGCAGCGTTCTGATA
 AAAAATATGATGAAGCTATAAAATGTTACCGAAATGCCCTCAAATTAGATAAAGATAACCTGCAAATTTT
 GAGGGATCTCTACTGTTGCAGATCCAAATGAGAGACCTTGAAGGTTACCGAGAGACAAGATACCAGCTT
 CTTGAGTTGCGCCACACAGCGTGCCTCCTGGATTGGATATGCTATTGCATACCATTTGCTGAAAGATT
 ATGATATGGCCCTAAAACGTGTTGAAGAATTTAGACAACTCAGCAAGTTCCTCCAAACAAAATAGATTA
 TGAATATAGTGAATTGATATTATACCAGAATCAAGTGATGAGAGAGGCAGATCTGTTGCAGGAATCTTTG
 GAACATATAGAAATGTATGAGAAACAAATATGTGATAAACTTTTGGTGGAAAGAAATTAAGGGGAAATAC
 TGGTGAATTTGGGAAGATTAAGAAGCCAGTGAAGTGTCAAACCTTGAATGATCGAAATGCAGAAAA
 CTGGTGTATTATGAAGGCTTGGAAAAAGCTCTACAAATTAGCACTTTAGAAAGAGAGGCTTCAAATTTAT
 GAAGAAATTAGTAAGCAGCACCCCAAAGCAATTACCCAGAAGATTACCTTTGACTCTTGTCCCAGGTG
 AAAGATTTAGAGAATAATGGATAAGTTCCTGAGGTTAACTTCAGTAAAGGCTGCCACCTTGTTTAC
 TACTTTGAAATCTTTATTTACAATACAGAAAAGGTTTCTATAATCCAGGAATGTTACTAATTATGAA
 GCCTCTCTTAAACGTGTGACTTTTTAGCCCATATGAGAATGGGAGAAGGAACCCCGACAACACTAC
 TCTGGTTTCAGTATTTCTGGCACAGCACTTTGATAAACTTGGACAGTATTCTTTGGCTTTGGATTATAT
 TAATGCTGCAATTGCTAGTACTCCAACCTAATAGAATTATTCTATATGAAAGCAAAAATTTACAAGCAT
 ATAGGTAATCTCAAGAAGCTGCAAAAGTGGATGGATGAAGCACAGTCTTTGGACACAGCTGATAGATTCA
 TCAATTCAAATGTGCAAAATACATGCTTCGAGCAAAATATGATAAAGAAGCAGAGGAAATGTGCTCCAA
 GTTCACAAGGGAAGAACATCTGCCATGGAAAACTAAATGAAATGCAGTGTATGTGGTTTCAGACAGAA
 TGCATTTTCAGCTTATCAGCGTCTGGGAGATACGGGGATGCCTTGAAAAAATGTCATGAAGTAGAAAGGC
 ATTTTTTTGAGATAACTGATGACCAATTCGACTCCATACATACTGCATGAGAAAGATGACCCTTCGTGC
 CTATGTTGACCTTTTGGATTAGAAGATATACTCAGAAGACATGCCTTTTATTTCAGGCTGCTAGATCA
 GCGATTGAAATATACTTGAATTTGATGATAATCCCTTAACCAATGAAAGCAAACAAGAAATAAAT
 CAGAAAATTTGTCAGCCAAAGAATTGAAGAAAATGCTTAGCAAGCAGAGAAGAGCTCAGAAAAAGGCTAA
 ACTAGAAGAAGAAAGAAAGCATGCAAGAAAGAGAAGCTAACAGAAAAATCAAAGAAAAAAGAGATGAA
 GAAGAAGAAGAACAGTGGCCTTAAGGAAGAACTTATACCTGAAAAATTAGAAAGGGTAGAAAAATCCAT
 TAGAGGAAGCCGTTAAGTTCCTTATACCTCTTAAGAACCTTGTGCTGATAACATTGACACTCATCTGTT
 AGCATTGAAATATATTTTAGAAAAGGAAAGTTTCTGTTAATGCTGCAGTCTGTCAAACGAGCTTTTGCC
 ATTAACAGTAATAACCCATGGTTACATGAATGTTAATTAGATTTTCTAAATCTGTGTCTAATCATAGTA
 ATCTTCCAGACATTGTGAGCAAAGTCTATCTCAAGAAATGCAGAAAATATTTGTCAAAGGATTTGGA
 AAGTTTTAATGAGGATTTTCTGAAACGTAACGCTACCTCTTTCAGCATCTACTTCAGGTGCTAAAATG
 ATGATTTTTCTGGACAAGTCAAGCAGGAGAAAGCAATTGCTATAGCCACTAGACTAGATGAAACTATAA
 AAGATAAAGATGTAAAGACATTAATAAAGGTTTCTGAAGCACTGCTTGTGGCAGCTTTGGAACTGTAG
 TTCCCAATATGAAGAATATAGGATGGCCTGTCATAACCTGCTTCTTTTACATCTGCCTTCTGCCTGCT
 GTGAATGAAGTCGACAATCCTAATGTGGCACTGAACCATACAGCTAATTATGATGTCTTGGCAAATGAAA
 TT

ACGCGTACGCGGCCGCTCGAGCAGAACTCATCTCAGAAGAGGATCTGGCAGCAATGATATCTGGATT
 ACAAGGATGACGACGATAAGGTTTAA

Protein Sequence: >RC214224 representing NM_024561
 Red=Cloning site Green=Tags(s)

MPNVLLPPKESNLFKRILKCYEQKQYKNGLKFCMKILSNPKFAEHGETLAMKGLTLNCLGKKEEAYEFVR
 KGLRNDVKSHVCWHVYGLLQRSDDKYDEAIKCYRNALKLDKDNLQILRDLSSLQIQMRDLEGYRETRYQL
 LQLRPTQRASWIGYAIAYHLLKDYDMALKLLEEFRTQVPPNKIDYEYSELILYQNQVMREADLLQESL
 EHIEMYEKQICDKLLVEEIKGEILLKLGRLKEASEVFNKIDRNAENWCYEGLEKALQISTLEERLQIY
 EEISKQHPKAITPRRLPLTLVPGERFRELMDKFLRVNFSKGCPLFTTLKSLYNTKVSIIQELVTNYE
 ASLKTCDFFSYENGEKEPPTLLWVQYFLAQHFQDKLGGQYSLALDYINAAIASTPTLIELFYMKAKIYKH
 IGNLKEAAKWMDEAQSLDADRFINSKCAKYMRLANMIKEAEEMCSKFTREGTSAMENLNEMQCMWFQTE
 CISAYQRLGRYGDALKKCHEVERHFFEITDDQDFHTYCMRKMTLRAYVDLLRLEDILRRHAFYFKAARS
 AIEIYLKLYDNPLTNESKQQEINSENLKAKELKKMLSKQRRQKAKLEEKHAERERQKNQKKRDE
 EEEEASGLKEELIPEKLERVENPLEEAVKFLIPLKNLVADNIDTHLLAFEIYFRKGFLLMLQSVKRAFA
 INSNPWLHECLIRFSKSVSNHNLDPDIVSKVLSQEMQKIFVKKDLSEFNDFLKRNATSLQHLLSGAKM
 MYFLDKSRQEKAIATRLDETIDKDKVTLIKVSEALLDGSFGNCSSQYEEYRMACHNLLPFTSAFLPA
 VNEVDNPNVALNHTANYDVLANEI

TRTRPLEQKLISEEDLAANDILDYKDDDDKV

Chromatograms: https://cdn.origene.com/chromatograms/mg2560_d08.zip

Restriction Sites: SgfI-MluI

Cloning Scheme:

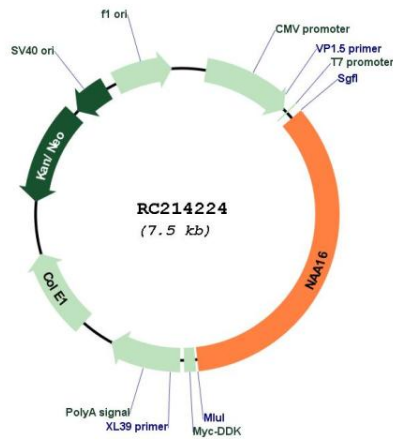
Cloning sites used for ORF Shuttling:



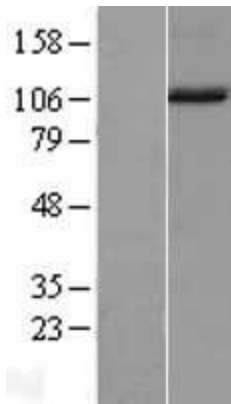
* The last codon before the Stop codon of the ORF

ACCN:	NM_024561
ORF Size:	2592 bp
OTI Disclaimer:	The molecular sequence of this clone aligns with the gene accession number as a point of reference only. However, individual transcript sequences of the same gene can differ through naturally occurring variations (e.g. polymorphisms), each with its own valid existence. This clone is substantially in agreement with the reference, but a complete review of all prevailing variants is recommended prior to use. More info
OTI Annotation:	This clone was engineered to express the complete ORF with an expression tag. Expression varies depending on the nature of the gene.
Components:	The ORF clone is ion-exchange column purified and shipped in a 2D barcoded Matrix tube containing 10ug of transfection-ready, dried plasmid DNA (reconstitute with 100 ul of water).
Reconstitution Method:	<ol style="list-style-type: none">1. Centrifuge at 5,000xg for 5min.2. Carefully open the tube and add 100ul of sterile water to dissolve the DNA.3. Close the tube and incubate for 10 minutes at room temperature.4. Briefly vortex the tube and then do a quick spin (less than 5000xg) to concentrate the liquid at the bottom.5. Store the suspended plasmid at -20°C. The DNA is stable for at least one year from date of shipping when stored at -20°C.
RefSeq:	NM_024561.5
RefSeq Size:	4266 bp
RefSeq ORF:	2595 bp
Locus ID:	79612
UniProt ID:	Q6N069
Cytogenetics:	13q14.11
Protein Families:	Druggable Genome, Transcription Factors
MW:	101.3 kDa
Gene Summary:	Auxillary subunit of the N-terminal acetyltransferase A (NatA) complex which displays alpha (N-terminal) acetyltransferase activity.[UniProtKB/Swiss-Prot Function]

Product images:



Circular map for RC214224



Western blot validation of overexpression lysate (Cat# [LY403001]) using anti-DDK antibody (Cat# [TA50011-100]). Left: Cell lysates from untransfected HEK293T cells; Right: Cell lysates from HEK293T cells transfected with RC214224 using transfection reagent MegaTran 2.0 (Cat# [TT210002]).