

Product datasheet for **RC214223**

5HT3E (HTR3E) (NM_182589) Human Tagged ORF Clone

Product data:

Product Type:	Expression Plasmids
Product Name:	5HT3E (HTR3E) (NM_182589) Human Tagged ORF Clone
Tag:	Myc-DDK
Symbol:	5HT3E
Synonyms:	5-HT3-E; 5-HT3c1; 5-HT3E
Mammalian Cell Selection:	Neomycin
Vector:	pCMV6-Entry (PS100001)
E. coli Selection:	Kanamycin (25 ug/mL)



[View online »](#)

ORF Nucleotide Sequence:

>RC214223 ORF sequence
 Red=Cloning site Blue=ORF Green=Tags(s)

TTTTGTAATACGACTCACTATAGGGCGGCCGGGAATTCGTCGACTGGATCCGGTACCGAGGAGATCTGCC
 GCC**CGCATCGCC**

ATGTTAGCTTTTCATTTTATCACGGGCGACCCACGCCCTGCCTTGGGGCCCTCTCATATAGGGAGCACA
 GGGTTGCTCTCCTTCATCTCACACATTCGATGTCCACTACAGGAAGGGGGTTACTTTACCATCAATTG
 CTCAGGGTTTGGCCAGCACGGGGCGGATCCCACTACTCTGAATTCAGTGTTTAAAGAAAGCCCTCCGT
 CCGGTCACCAACATCAGCGTCCCAACCAAGTCAACATCTCCTTCGCGATGTCTGCCATCTAGATGTGA
 ATGAACAGCTGCACCTCTGTATCATTCTGTGGCTGGAAATGGTTTGGGATAACCCATTTATCAGCTG
 GAACCCAGAGGAATGTGAGGGCATCACGAAGATGAGTATGGCAGCCAAGAACCTGTGGCTCCAGACATT
 TTCATCATTGAACTCATGGATGTGGATAAGACCCAAAAGGCCTCACAGCATATGTAAGTAAATGAAGGTC
 GCATCAGGTATAAGAAACCCATGAAGGTGGACAGTATCTGTAACCTGGACATCTTCTACTCCCCTCGA
 CCAGCAGAAGTGCACACTCACCTTCAGCTCATTCTCTACACAGTGGACAGCATGTTGCTGGACATGGAG
 AAAGAAGTGTGGGAAATAACAGACGCATCCCGGAACATCCTTCAGACCCATGGAGAATGGGAGCTCCTGG
 GCCTCAGCAAGGCCACCGCAAAGTTGTCCAGGGGAGGCAACCTGTATGATCAGATCGTGTCTATGTGGC
 CATCAGGCCGAGGCCAGCCTCTATGTCATAAACCTTCTCGTGCCAGTGGCTTTCTGGTTGCCATCGAT
 GCCCTCAGCTTCTACCTGCCAGTAAAAGTGGGAATCGTGTCCCATCAAGATAACGCTCCTGCTGGGCT
 ACAACGTCTTCTGCTCATGATGAGTGACTTGCTCCCAACAGTGGCACCCCTCATCGGTGTCTACTT
 CGCCCTGTGCCTGTCCCTGATGGTGGGAGCCTGCTGGAGACCATCTTATCACCCACCTGCTGCACGTG
 GCCACCCAGCCCCACCCCTGCCTCGTGGTCCACTCCCTGCTGCTCCACTGCAACAGCCCGGGGA
 GATGCTGTCCACTGCGCCCCAGAAGAAAATAAGGGCCCGGGTCTACCCCAACCCACCTGCCCGGTGT
 GAAGGAGCCAGAGGTATCAGCAGGGCAGATGCCGGGCCCTGCGGAGGCAGAGCTGACAGGGGGCTCAGAA
 TGGACAAGGGCCAGCGGGAACACGAGGCCAGAACAGCACTCAGTGGAGCTGTGGTTGCAAGTTCAGCC
 ACGCGATGGACGCCATGCTCTCCGCTCTACCTGCTCTCATGGCTCCTCTATCATCACCGTCATATG
 CCTCTGGAACACC

ACGCGTACGCGGCCGCTCGAGCAGAAACTCATCTCAGAAGAGGATCTGGCAGCAAATGATATCCTGGATT
 ACAAGGATGACGACGATAAGGTTTAA

Protein Sequence:

>RC214223 protein sequence
 Red=Cloning site Green=Tags(s)

MLAFILSRATPRPALGPLSYREHRVALLHLTHSMSTTGRGVFTTINCSGFGQHGADPTTLNSVFNRPFR
 PVTNISVPTQVNISFAMSAILDVNEQLHLLSSFLLWLEMVWDNPFISWNPEECEGITKMSMAAKNLWLPDI
 FIIELMDVDKTPKGLTAYVSNRIRYKPKMVDVICNLDIFYFPFDQQNCTLTFSSFLYTVDMSLLDME
 KEVWEITDASRNILQTHGEWELLGLSKATAKLSRGGNLYDQIVFYVAIRRRPSLYVINLLVPSGFLVAID
 ALSFYLPVKSGNRVPFKITLLLYNVFLLMMSDLLPTSGTPLIGVYFALCLSLMVGSLELETIFITHLLHV
 ATTQPPPLPRWLHSLLLHCNSPGRCCPTAPQKENKGPGLTPTHLPVKEPEVSAGQMPGPAEAELETGGSE
 WTRAQREHEAQKQHSVELWLQFSHAMDAMLFRLYLLFMASIIITVICLWNT

TRTRPLEQKLISEEDLAANDILDYKDDDDKV

Chromatograms:

https://cdn.origene.com/chromatograms/mk6559_a09.zip

Restriction Sites:

Sgfl-Mlul

Cloning Scheme:

Cloning sites used for ORF Shuttling:


ACCN: NM_182589

ORF Size: 1413 bp

OTI Disclaimer: The molecular sequence of this clone aligns with the gene accession number as a point of reference only. However, individual transcript sequences of the same gene can differ through naturally occurring variations (e.g. polymorphisms), each with its own valid existence. This clone is substantially in agreement with the reference, but a complete review of all prevailing variants is recommended prior to use. [More info](#)

OTI Annotation: This clone was engineered to express the complete ORF with an expression tag. Expression varies depending on the nature of the gene.

Components: The ORF clone is ion-exchange column purified and shipped in a 2D barcoded Matrix tube containing 10ug of transfection-ready, dried plasmid DNA (reconstitute with 100 ul of water).

Reconstitution Method:

1. Centrifuge at 5,000xg for 5min.
2. Carefully open the tube and add 100ul of sterile water to dissolve the DNA.
3. Close the tube and incubate for 10 minutes at room temperature.
4. Briefly vortex the tube and then do a quick spin (less than 5000xg) to concentrate the liquid at the bottom.
5. Store the suspended plasmid at -20°C. The DNA is stable for at least one year from date of shipping when stored at -20°C.

RefSeq: [NM_182589.2](#), [NP_872395.2](#)
RefSeq Size: 1927 bp

RefSeq ORF: 1416 bp

Locus ID: 285242

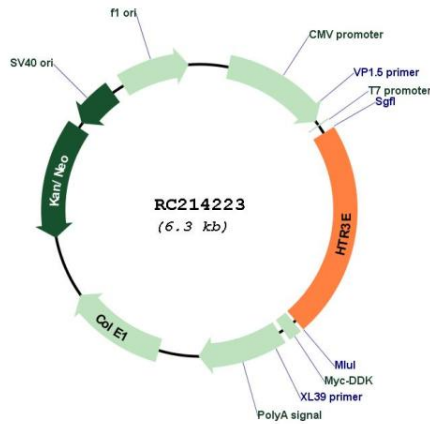
UniProt ID: [A5X5Y0](#)
Cytogenetics: 3q27.1

Protein Families: Druggable Genome, Ion Channels: Cys-loop Receptors, Transmembrane

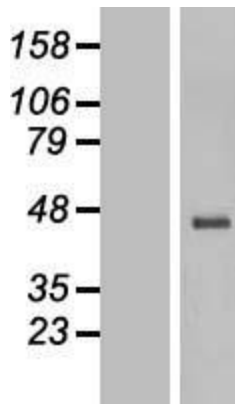
MW: 52.8 kDa

Gene Summary: This locus encodes a 5-hydroxytryptamine (serotonin) receptor subunit. The encoded protein, subunit E, may play a role in neurotransmission in myenteric neurons. Genes encoding subunits C, D and E form a cluster on chromosome 3. Alternatively spliced transcript variants encoding distinct isoforms have been described. [provided by RefSeq, Feb 2012]

Product images:



Circular map for RC214223



Western blot validation of overexpression lysate (Cat# [LY405472]) using anti-DDK antibody (Cat# [TA50011-100]). Left: Cell lysates from untransfected HEK293T cells; Right: Cell lysates from HEK293T cells transfected with RC214223 using transfection reagent MegaTran 2.0 (Cat# [TT210002]).