

Product datasheet for **RC214216**

BIN1 (NM_139343) Human Tagged ORF Clone

Product data:

Product Type:	Expression Plasmids
Product Name:	BIN1 (NM_139343) Human Tagged ORF Clone
Tag:	Myc-DDK
Symbol:	BIN1
Synonyms:	AMPH2; AMPHL; CNM2; SH3P9
Mammalian Cell Selection:	Neomycin
Vector:	pCMV6-Entry (PS100001)
E. coli Selection:	Kanamycin (25 ug/mL)



[View online »](#)

ORF Nucleotide Sequence:

>RC214216 representing NM_139343
 Red=Cloning site Blue=ORF Green=Tags(s)

TTTTGTAATACGACTCACTATAGGGCGGCCGGGAATTCGTCGACTGGATCCGGTACCGAGGAGATCTGCC
 GCC**CGCATCGCC**

ATGGCAGAGATGGGCAGTAAAGGGGTGACGGCGGAAAGATCGCCAGCAACGTGCAGAAGAAGCTCACCC
 GCGCGCAGGAGAAGTTCTCCAGAAGCTGGGGAAGGCAGATGAGACCAAGGATGAGCAGTTTGAGCAGTG
 CGTCCAGAATTTCAACAAGCAGCTGACGGAGGGCACCCGGCTGCAGAAGGATCTCCGGACCTACCTGGCC
 TCCGTCAAAGCCATGCACGAGGCTTCCAAGAAGCTGAATGAGTGTCTGCAGGAGGTGATGAGCCCGATT
 GGCCCGCAGGGATGAGGCAAACAAGATCGCAGAGAACAACGACCTGCTGTGGATGGATTACCACCAGAA
 GCTGGTGGACCAGGCGTGTGACCATGGACACGTACCTGGGCCAGTTCCCGACATCAAGTCACGCATT
 GCCAAGCGGGGGCGAAGCTGGTGGACTACGACAGTCCCGGCACCACTACGAGTCCCTTCAAACCGCCA
 AAAAGAAGGATGAAGCCAAAATTGCCAAGCCTGTCTCGTGTGTTGAGAAAGCCGCCCCCAGTGGTGCCA
 AGGCAAATGCAGGCTCATCTCGTAGCTCAAATAACCTGCTCCGAAATCAGGCCGAGGAGGAGCTCATC
 AAAGCCCAGAAGGTGTTTGAGGAGATGAATGTGGATCTGCAGGAGGAGCTGCCGTCCCTGTGGAACAGCC
 GCGTAGGTTTCTACGTCAACACGTTCCAGAGCATCGCGGGCCTGGAGGAAAACCTCCACAAGGAGATGAG
 CAAGCTCAACCAGAACCTCAATGATGTGCTGGTCCGGCCTGGAGAAGCAACACGGGAGCAACACCTTCAAG
 GTCAAGGCCAGCCAGTGAACAACGCGCTGCAAAAGGGAACAAGAGCCCTTCGCTCCAGATGGCTCCC
 CTGCCGCCACCCCGAGATCAGAGTCAACCACGAGCCAGAGCCGGCTGGCGGGCCACGCCCCGGGGCCAC
 CCTCCCAAGTCCCATCTCAGCTCCGGAAGGCCACCAAGTCCCTCCGCTCCCAAACACACCCCGTCC
 AAGGAAGTCAAGCAGGAGCAGATCCTCAGCCTGTTTGAGGACACGTTTGTCCCTGAGATCAGCGTGACCA
 CCCCCTCCAGTTTGAGGCCCGGGGCCCTTCTCGGAGCAGGCCAGTCTGCTGGACCTGGACTTTGACCC
 CTTCCCGCCCGTACGAGCCCTGTGAAGCACCCACGCCCTCTGGTCAGTCAATTCTTGGGACCTCTGG
 GAGCCACAGAGAGTCCAGCCGGCAGCCTGCCTTCCGGGAGCCAGCGCTGCCGAGGGCACCTTTGCTG
 TGTCTGGCCAGCCAGACGCGCCAGCCGGGGCCTGCCAACCAGCAGAGGCTCGGAGGTGGCGGGTGG
 GACCAACCTGCGGCTGGAGCCAGGAGCCAGGGGAGACGGCGGCAAGTGAAGCAGCCTCCAGCTCTCTT
 CCTGCTGTGTTGGTGGAGACCTCCAGCAACTGTGAATGGCACCGTGGAGGGCGGCAAGTGGGGCCGGC
 GCTTGGACCTGCCCCAGGTTTCATGTTCAAGGTACAGGCCAGCAGCTACACGGCCACTGACACAGA
 CGAGCTGCAGCTCAAGGCTGGTGTGTTGCTGGTGTATCCCCTCCAGAACCCTGAAGAGCAGGATGAA
 GGCTGGCTCATGGCGTGAAGGAGAGCGACTGGAACCAGCACAAAGGAGCTGGAGAAGTCCGTGGCGTCT
 TCCCCGAGAACTCACTGAGAGGTTCCCA

ACGCGTACGCGGCCGCTCGAGCAGAAACTCATCTCAGAAGAGGATCTGGCAGCAAATGATATCCTGGATT
 ACAAGGATGACGACGATAAGGTTTAA

Protein Sequence:

>RC214216 representing NM_139343
 Red=Cloning site Green=Tags(s)

MAEMSGKGVTAGKIASNVQKKLTRAQEKVLQKLGKADETKDEQFEQCVQNFNKQLTEGTRLQKDLRTYLA
 SVKAMHEASKKLENECLQEVYEPDWPGRDEANKIAENNDLLWMDYHQKLVQDQALLTMDTYLGQFPDIKSRI
 AKRGRKLVYDSARHHYESLQTAKKKDEAKIAKPVSLLEKAAPQWCQKLAHLVAQTNLLRNQAEELI
 KAQKVFEEMNVDLQEELPSLWNSRVGFYVNTFQSIAGLEENFHKEMSKLNQNLNDVLVGLEKQHGSNFTT
 VKAQPSDNAPAKGNKSPSPDGSAAATPEIRVNHEPEPAGGATPGATLPKSPSQLRKGPVPPPPKHTPS
 KEVKQEILSLFEDTFVPEISVTTSPSQFEAPGPFSEQASLLDLDFDPLPPVTPSPVKAPTPSGQSIIPWDLW
 EPTESPAGSLPSGEPAAEGTFVSWPQTAEPGPAQPAEASEVAGGTQPAAGAQPGETAASEAASSSL
 PAVVVETFPATVNGTVEGGSGAGRLDLPFGFMFKVQAQHDYATDDELQLKAGDVVLVIFPQNPEEQDE
 GWLMGVKESDWNQKHELEKCRGVFPENF TERVP

TRTRPLEQKLISEEDLAANDILDYKDDDDKV

Chromatograms:

https://cdn.origene.com/chromatograms/mk6811_f11.zip

Restriction Sites: SgfI-MluI

Cloning Scheme:



ACCN: NM_139343

ORF Size: 1779 bp

OTI Disclaimer: Due to the inherent nature of this plasmid, standard methods to replicate additional amounts of DNA in E. coli are highly likely to result in mutations and/or rearrangements. Therefore, OriGene does not guarantee the capability to replicate this plasmid DNA. Additional amounts of DNA can be purchased from OriGene with batch-specific, full-sequence verification at a reduced cost. Please contact our customer care team at custsupport@origene.com or by calling 301.340.3188 option 3 for pricing and delivery.

The molecular sequence of this clone aligns with the gene accession number as a point of reference only. However, individual transcript sequences of the same gene can differ through naturally occurring variations (e.g. polymorphisms), each with its own valid existence. This clone is substantially in agreement with the reference, but a complete review of all prevailing variants is recommended prior to use. [More info](#)

OTI Annotation: This clone was engineered to express the complete ORF with an expression tag. Expression varies depending on the nature of the gene.

Components: The ORF clone is ion-exchange column purified and shipped in a 2D barcoded Matrix tube containing 10ug of transfection-ready, dried plasmid DNA (reconstitute with 100 ul of water).

Reconstitution Method:

1. Centrifuge at 5,000xg for 5min.
2. Carefully open the tube and add 100ul of sterile water to dissolve the DNA.
3. Close the tube and incubate for 10 minutes at room temperature.
4. Briefly vortex the tube and then do a quick spin (less than 5000xg) to concentrate the liquid at the bottom.
5. Store the suspended plasmid at -20°C. The DNA is stable for at least one year from date of shipping when stored at -20°C.

Note: Plasmids are not sterile. For experiments where strict sterility is required, filtration with 0.22um filter is required.

RefSeq: [NM_139343.3](#)

RefSeq Size: 2637 bp

RefSeq ORF: 1782 bp

Locus ID: 274

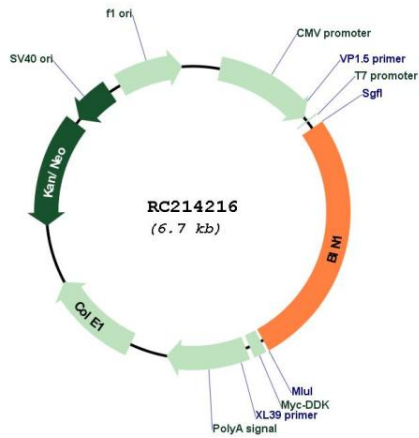
UniProt ID: [O00499](#)

Cytogenetics: 2q14.3

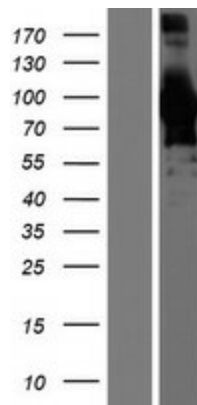
MW: 64.5 kDa

Gene Summary: This gene encodes several isoforms of a nucleocytoplasmic adaptor protein, one of which was initially identified as a MYC-interacting protein with features of a tumor suppressor. Isoforms that are expressed in the central nervous system may be involved in synaptic vesicle endocytosis and may interact with dynamin, synaptojanin, endophilin, and clathrin. Isoforms that are expressed in muscle and ubiquitously expressed isoforms localize to the cytoplasm and nucleus and activate a caspase-independent apoptotic process. Studies in mouse suggest that this gene plays an important role in cardiac muscle development. Alternate splicing of the gene results in several transcript variants encoding different isoforms. Aberrant splice variants expressed in tumor cell lines have also been described. [provided by RefSeq, Mar 2016]

Product images:



Circular map for RC214216



Western blot validation of overexpression lysate (Cat# [LY408302]) using anti-DDK antibody (Cat# [TA50011-100]). Left: Cell lysates from untransfected HEK293T cells; Right: Cell lysates from HEK293T cells transfected with RC214216 using transfection reagent MegaTran 2.0 (Cat# [TT210002]).