

Product datasheet for RC214211

EVX1 (NM_001989) Human Tagged ORF Clone

Product data:

Product Type: Expression Plasmids
 Product Name: EVX1 (NM_001989) Human Tagged ORF Clone
 Tag: Myc-DDK
 Symbol: EVX1
 Synonyms: EVX-1
 Mammalian Cell Selection: Neomycin
 Vector: pCMV6-Entry (PS100001)
 E. coli Selection: Kanamycin (25 ug/mL)
 ORF Nucleotide Sequence: >RC214211 representing NM_001989
 Red=Cloning site Blue=ORF Green=Tags(s)

TTTTGTAATACGACTCACTATAGGGCGGCCGGAATTCGTCGACTGGATCCGGTACCGAGGAGATCTGCC
 GCC**CGGATCGCC**

ATGGAGAGCCGAAAGGACATGGTTGTGTTTCTGGATGGGGTCCAGCTTGGCACTCTGGTTGGCAAGAGAG
 TCTCAAATTTGTCCGAAGCCGTGGGCAGCCCGTCCGGAGCCGCCCAGAAAATGGTCCCCGTGGTTG
 CCTGAGCCCTCGGGCCGTCCCTCCGGCCACCCGGGAGCGCGGGGGAGGCCCGGAGGAGGAGCCGGTA
 GATGGACTCGCAGGCAGCGCGGGCCGGCCGAGCCAGGTAGCTGGGGCGCCATGCTCGGCC
 CAGGACCCCGGCCCCCTCAGTCGACAGCCTCTCCGGACAGGGGCAACCCAGTAGCTCGGACCCGAGTC
 GGATTTCTATGAAGAAATCGAGGTGAGCTGCACCCCGGACTGCGCCACCGGGAACCCGAGTACCAGCAC
 AGCAAAGGGTCCGGCTCCGAGGCCTGGTCCGAGTCCGAACGGAGGGAGCGAGACCCCAAGAGCAACG
 GCGGCAGTGGTGGGGCGGCTCGCAAGGCACCCTGGCGTGCAGCGCCAGTGACCAGATGCGTTCGTTACCG
 CACCGCCTTACCCGAGAGCAGATTGCGCGGCTGGAGAAGGAATTCTACCGGGAGAAGTACGTATCCAGG
 CCGCGGAGATGTGAGCTGGCGGCCGCCCTAAACCTGCCGAAACCACCATCAAGGTGTGGTTCCAGAACC
 GGCGCATGAAGGACAAGCGGCAGCGCCTGGCCATGACGTGGCCGACCCGGCGGACCCCGCCTTCTACAC
 TTACATGATGAGCCATGCGGCGGCCGCGGGCGGCTGCCCTACCCCTTCCATCGCACCTGCCCTGCC
 TACTACTCGCCGGTGGCCTGGCGCCGATCCGCCCTCCGCCCGCCTGCCCTTACGCGGCTCG
 TCGCCCCGCTCGACACGTTCCGGTGTGTGCGAGCCCTACCCGCGGCCGAACTGCTGTGCGCCTTCCG
 CCACCCGCGCTTACCCCGGGCCCGCGCACGGACTGGGCGCCTTGCACGCGCCCTGCTCCTGCCTC
 GCCTGTACAGCGGCCCGGCCAACGGGCTGGCGCCCGGGCTGCCCGCCTCGGACTTACCTGTGCCT
 CCACCTCCGCTCGGACTCCTTCTCACCTTCCGCGCCCTCGGTGCTCAGCAAGGCCTCCTCGTCGCGCT
 GGACCAGAGGGAGGAGGTGCCCTCACTAGA

ACGCGTACGCGGCCGCTCGAGCAGAACTCATCTCAGAAGAGGATCTGGCAGCAAATGATATCCTGGATT
 ACAAGGATGACGACGATAAGGTTTAA



Reconstitution Method:

1. Centrifuge at 5,000xg for 5min.
2. Carefully open the tube and add 100ul of sterile water to dissolve the DNA.
3. Close the tube and incubate for 10 minutes at room temperature.
4. Briefly vortex the tube and then do a quick spin (less than 5000xg) to concentrate the liquid at the bottom.
5. Store the suspended plasmid at -20°C. The DNA is stable for at least one year from date of shipping when stored at -20°C.

RefSeq: [NM_001989.5](#)

RefSeq Size: 1858 bp

RefSeq ORF: 1224 bp

Locus ID: 2128

UniProt ID: [P49640](#)

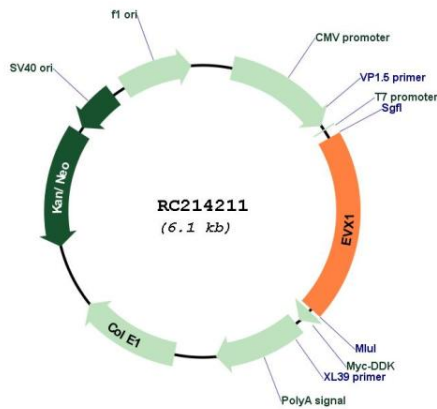
Cytogenetics: 7p15.2

Protein Families: ES Cell Differentiation/IPS

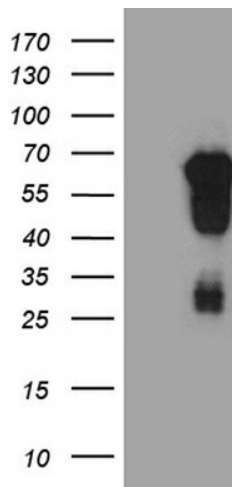
MW: 42.3 kDa

Gene Summary: This gene encodes a member of the even-skipped homeobox family characterized by the presence of a homeodomain closely related to the *Drosophila* even-skipped (*eve*) segmentation gene of the pair-rule class. The encoded protein may play an important role as a transcriptional repressor during embryogenesis. [provided by RefSeq, Jul 2008]

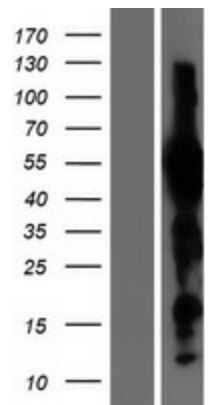
Product images:



Circular map for RC214211



HEK293T cells were transfected with the pCMV6-ENTRY control (Cat# [PS100001], Left lane) or pCMV6-ENTRY EVX1 (Cat# RC214211, Right lane) cDNA for 48 hrs and lysed. Equivalent amounts of cell lysates (5 ug per lane) were separated by SDS-PAGE and immunoblotted with anti-EVX1 (Cat# [TA811379])(1:2000). Positive lysates [LY400729] (100ug) and [LC400729] (20ug) can be purchased separately from OriGene.



Western blot validation of overexpression lysate (Cat# [LY400729]) using anti-DDK antibody (Cat# [TA50011-100]). Left: Cell lysates from untransfected HEK293T cells; Right: Cell lysates from HEK293T cells transfected with RC214211 using transfection reagent MegaTran 2.0 (Cat# [TT210002]).