

Product datasheet for RC214210

XAGE3 (NM_133179) Human Tagged ORF Clone

Product data:

Product Type: Expression Plasmids
Product Name: XAGE3 (NM_133179) Human Tagged ORF Clone
Tag: Myc-DDK
Symbol: XAGE3
Synonyms: CT12.3a; CT12.3b; GAGED4; PLAC6; pp9012; XAGE-3
Mammalian Cell Selection: Neomycin
Vector: pCMV6-Entry (PS100001)
E. coli Selection: Kanamycin (25 ug/mL)
ORF Nucleotide Sequence: >RC214210 ORF sequence
 Red=Cloning site Blue=ORF Green=Tags(s)

TTTTGTAATACGACTCACTATAGGGCGGCCGGAATTCGTCGACTGGATCCGGTACCGAGGAGATCTGCC
GCC**CGATCGCC**

ATGATTTGGCGAGGAAGATCAACATATAGGCCTAGGCCGAGGAGAAGTGTACCACCTCCTGAGCTGATTG
GGCCTATGCTGGAGCCCGGTGATGAGGAGCCTCAGCAAGAGGAACCACTGAAAGTCGGGATCCTGC
ACCTGGTCAGGAGAGAGAAGAAGATCAGGGTGCAGCTGAGACTCAAGTGCCTGACCTGGAAGCTGATCTC
CAGGAGCTGTCTCAGTCAAAGACTGGGGTGAATGTGAAATGGTCTGATGACCAGGGGAAGATTCTGC
CAAATCAGAACAATTTAAAATGCCAGAAGGAGGTGACAGGCAACCACAGTT

ACGCGTACGCGGCCGCTCGAGCAGAACTCATCTCAGAAGAGGATCTGGCAGCAAATGATATCCTGGATT
ACAAGGATGACGACGATAAGGTTTAA

Protein Sequence: >RC214210 protein sequence
 Red=Cloning site Green=Tags(s)
 MIWRGRSTYRPRRRSVPPPELIGPMLPEGDEEPQQEPPTESRDPAPGQEREEDQGAETQVPDLEADL
 QELSQSKTGGECEGNGPDDQGKILPKSEQFKMPEGGDRQPQV

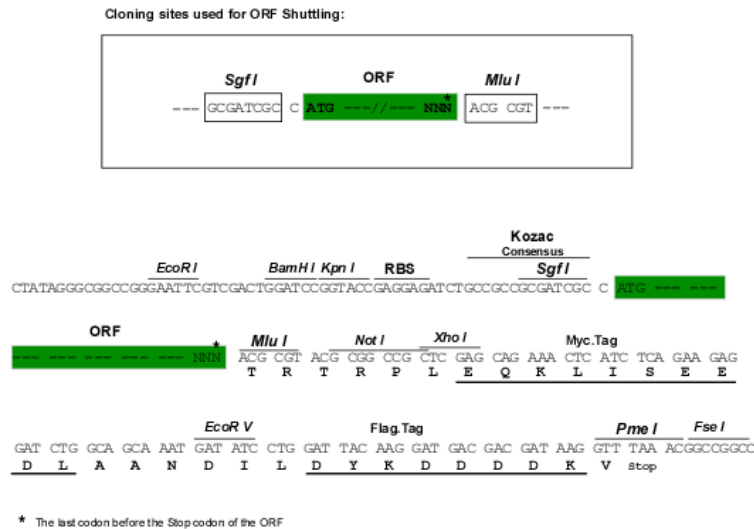
TRTRPLEQKLISEEDLAANDILDYKDDDDKV

Chromatograms: https://cdn.origene.com/chromatograms/mk6548_e06.zip

Restriction Sites: SgfI-MluI



[View online »](#)

Cloning Scheme:


ACCN: NM_133179

ORF Size: 333 bp

OTI Disclaimer: The molecular sequence of this clone aligns with the gene accession number as a point of reference only. However, individual transcript sequences of the same gene can differ through naturally occurring variations (e.g. polymorphisms), each with its own valid existence. This clone is substantially in agreement with the reference, but a complete review of all prevailing variants is recommended prior to use. [More info](#)

OTI Annotation: This clone was engineered to express the complete ORF with an expression tag. Expression varies depending on the nature of the gene.

Components: The ORF clone is ion-exchange column purified and shipped in a 2D barcoded Matrix tube containing 10ug of transfection-ready, dried plasmid DNA (reconstitute with 100 ul of water).

Reconstitution Method:

1. Centrifuge at 5,000xg for 5min.
2. Carefully open the tube and add 100ul of sterile water to dissolve the DNA.
3. Close the tube and incubate for 10 minutes at room temperature.
4. Briefly vortex the tube and then do a quick spin (less than 5000xg) to concentrate the liquid at the bottom.
5. Store the suspended plasmid at -20°C. The DNA is stable for at least one year from date of shipping when stored at -20°C.

RefSeq: [NM_133179.3](#)

RefSeq Size: 543 bp

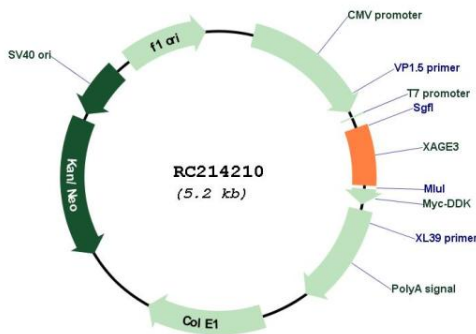
RefSeq ORF: 336 bp

Locus ID: 170626

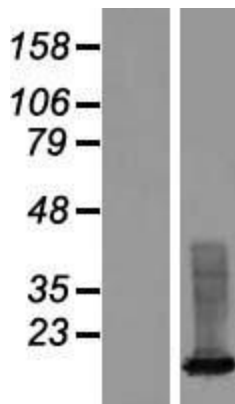
UniProt ID: [Q8WTP9](#)
 Cytogenetics: Xp11.22
 MW: 12.3 kDa

Gene Summary: This gene is a member of the XAGE subfamily, which belongs to the GAGE family. The GAGE genes are expressed in a variety of tumors and in some fetal and reproductive tissues. This gene is expressed in placenta and fetal liver/spleen, and may function in inhibiting cancer cell growth. The protein encoded by this gene shares a sequence similarity with other GAGE/PAGE proteins. Because of the expression pattern and the sequence similarity, this protein also belongs to a family of CT (cancer-testis) antigens. Alternative splicing of this gene generates 2 transcript variants differing in the 5' UTR. [provided by RefSeq, Jul 2008]

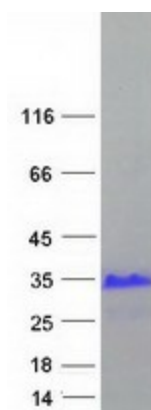
Product images:



Circular map for RC214210



Western blot validation of overexpression lysate (Cat# [LY408847]) using anti-DDK antibody (Cat# [TA50011-100]). Left: Cell lysates from untransfected HEK293T cells; Right: Cell lysates from HEK293T cells transfected with RC214210 using transfection reagent MegaTran 2.0 (Cat# [TT210002]).



Coomassie blue staining of purified XAGE3 protein (Cat# [TP314210]). The protein was produced from HEK293T cells transfected with XAGE3 cDNA clone (Cat# RC214210) using MegaTran 2.0 (Cat# [TT210002]).