

Product datasheet for RC214199

COPA (NM_001098398) Human Tagged ORF Clone

Product data:

| | |
|---------------------------|--|
| Product Type: | Expression Plasmids |
| Product Name: | COPA (NM_001098398) Human Tagged ORF Clone |
| Tag: | Myc-DDK |
| Symbol: | COPA |
| Synonyms: | AIJJK; alpha-COP; HEP-COP |
| Mammalian Cell Selection: | Neomycin |
| Vector: | pCMV6-Entry (PS100001) |
| E. coli Selection: | Kanamycin (25 ug/mL) |
| ORF Nucleotide Sequence: | >RC214199 representing NM_001098398 Red=Cloning site Blue=ORF Green=Tags(s) |

TTTTGTAATACGACTCACTATAGGGCGGCCGGAATTCGTCGACTGGATCCGGTACCGAGGAGATCTGCC
GCC**CGATCGCC**

ATGTTAACCAAATTCGAGACCAAGAGCGCGGGTCAAAGGGCTCAGCTTTCACCCAAAAGACCTTGGA
TCCTGACTAGTTTACATAATGGGGTCATCCAGTTATGGGACTATCGGATGTGCACCTCATTGACAAAGT
TGATGAACATGATGGTCCAGTGCAGGCATTGACTTCCATAAGCAGCAGCCACTGTCGCTCTGGAGGA
GATGACTATAAGATTAAGGTTTGAATTACAAGCTTCGGCGCTGTCTTTTACATTGCTTGGCCTTAG
ATTATATTCGCACCACGTTTTTTCATCATGAATATCCCTGGATTCTGAGTGCCTCCGATGATCAGACCAT
CCGAGTGTGGAATTGGCAATCTAGAACCTGTGTTGTGTGTTAACAGGGCACAACCATATGTGATGTGT
GCTCAGTTCACCCACAGAAGACTTGGTAGTATCAGCCAGCCTGGACCAGACTGTGCGGTTTTGGGATA
TTTCTGGTCTGAGGAAAAAACCTGTCCCTGGTGCAGTGAATCGGATGTGAGAGGAATAACTGGGGT
TGATCTATTTGGAACACAGATGCAGTGGTGAAGCATGTACTAGAGGGTCACGATCGTGGAGTAACTGG
GCTGCCTTCCACCCACTATGCCCTTATTGTATCTGGGGCAGATGATCGTCAAGTGAAGATCTGGCGCA
TGAATGAATCAAAGGCATGGGAGGTTGATACCTGCCGGGCCATTACAACAATGTATCTTGTGCCGCTT
CCACCCTCGCCAAGAGTTGATCCTCAGCAATTCTGAGGACAAGAGTATTCGAGTCTGGGATATGTCTAAG
CGGACTGGGTTTCAGACTTCCGACAGACCATGATCGTTTCTGGGCTAGCTGCTCACCTAACCTTA
ACCTCTTTGCAGCAGCCATGATGGTGGTATGATTGTGTTTAAAGCTGGAACGGGAACGGCCAGCCTATGC
TGTTTCATGGCAATATGCTACACTATGTCAAGGACCGATTCTTACGACAGCTGGATTTCAACAGCTCCAAA
GATGTAGCTGTGATGCAGTTGCGGAGTGGTTCCAAGTTTCCAGTATTCAATATGTCATACAATCCAGCAG
AAAATGCAGTCTGCTTTGTACAAGAGCTAGCAATCTAGAGAATAGTACCTATGACCTGTACACCATCCC
TAAAGATGCTGACTCCAGAATCCTGATGCGCCTGAAGGGAAACGATCCTCAGGCCTGACAGCCGTTTGG
GTCGCTCGAAATCGGTTTGTCTGCTAGATCGGATGCATTGCTTCTGATCAAGAATCTGAAGAATGAGA
TCACCAAAAAGGTACAGGTGCCAACTGTGATGAGATCTTCTATGCTGGCACAGGCAATCTCCTGCTTCG
AGATGCGGACTCTATCACACTTTTGACGTACAGCAGAAGCGGACTCTGGCATCTGTGAAGATTTCTAAA



[View online »](#)

GTGAAATACGTTATCTGGTCAGCAGACATGTCACATGTAGCACTACTAGCCAAACACGAACACTCATGCC
 CTTTGCCTCTTACAGCCATTGTGATCTGTAACCGCAAACCTGGATGCTTTATGTAACATTCATGAGAACAT
 TCGTGTCAAGAGTGGGGCCTGGGATGAGAGTGGGGTATTTATCTATACCACAAGCAACCACATCAAATAT
 GCTGTCACCACTGGGGACCACGGGATCATTGAACTCTGGATTTACCCATCTATGTCACACGGGTGAAGG
 GCAACAATGTATACTGCCTAGACAGGGAGTGTGTCGCCGGGACTCACCATTGATCCCAGTGGTTCAA
 ATTTCAAGCTGGCCCTGATCAACAGAAAAATGATGAGGTACTGCACATGGTGAGGAATGCCAAACTAGTT
 GGCCAGTCTATTATTGCTTATCTCCAGAAGAAGGGCTATCCTGAAGTGGCACTGCATTTTGTCAAGGATG
 AGAAAACTCGCTTAGTCTGGCACTGGAGTGTGGAACATTGAGATTGCTCTGGAAGCAGCCAAAGCACT
 GGATGACAAGAAGCTGCTGGGAAAAGCTGGGAGAAGTGGCCCTGCTGCAGGGGAACCACCAGATTGTGGAA
 ATGTGCTATCAGCGTACCAAAAACCTTTGACAAAACCTTTCCTTCTGTATCTTACTGGCAACTTAGAAA
 AACTTCGCAAGATGATGAAGATTGCTGAGATCAGAAAGGACATGAGTGGCCACTATCAGAATGCCCTATA
 CCTGGGTGATGTGTCAGAGCGTGTGCGGATCCTGAAGAACTGTGGACAGAAGTCCCTGGCCTATCTCACA
 GCTGCTACCCATGGCTTAGATGAAGAAGCTGAGAGCCTAAAGGAGACATTTGACCCAGAGAAGGAGACAA
 TCCAGACATTGACCCTAATGCCAAGCTGCTCCAGCCACCTGCACCTATCATGCCATTGGATACCAATTG
 GCCTTTATTGACTGTATCCAAAGGATTTTTTGAAGGCACCATTGCCAGCAAAGGGGAGGGAGGACTG
 GCTGCTGACATTGACATTGACACTGTTGGTACAGAGGGCTGGGGAGAGGATGCAGAGCTGCAGTTGGATG
 AAGATGGGTTTGTGGAGGCTACAGAAGGTTTGGGGATGATGCTCTTGGCAAGGGACAGGAAGAAGGAGG
 TGGCTGGGATGTAGAAGAAGATCTGGAGCTCCCTCCTGAGCTGGATATATCCCCTGGGGCAGCTGGTGGG
 GCTGAAGATGGTTTCTTTGTGCCCCCAACCAAGGGAACAAGTCCAACCTCAGATCTGGTGAATAACTCTC
 AGCTTCCAGTTGATCACATCCTGGCAGGCTCTTTCGAAACAGCCATGCGGCTCCTCATGACCAAGTAGG
 GGTAATCCAGTTTGGCCCTACAAGCAACTGTTCTACAGACATACGCCCGAGGCCGCACAACCTATCAG
 GCTCTGCCCTGCCTACCCTCCATGTATGGCTATCCTAATCGCAACTGGAAGGATGCAGGGCTGAAGAATG
 GTGTACCAGCTGTGGCCTGAAGCTTAATGACCTCATCCAACGGTTGCAGCTGTGCTACCAGCTCACCAC
 AGTTGGCAAATTTGAGGAGGCTGTGAAAAAATTCGGTTCCATCCTTCTCAGTGTGCCACTTCTTGTGTG
 GACAATAAACAAGAGATTGCAGAGGCCAGCAGCTCATACCATTTGCCGTGAGTACATTGTGGTTTGT
 CCGTGGAGACAGAAAGGAAGAGCTGCCAAAGAGACTTAGAACAGCAGAAGCGCATCTGTGAGATGGC
 AGCCTATTTACCCACTCAAACCTGCAGCCTGTGCACATGATCCTGGTGTGCGTACAGCCCTCAATCTG
 TTCTTCAAGCTCAAGAATTCAAGACAGCTGCCACCTTTGCTCGGCGCCTACTAGAACTCGGGCCCAAGC
 CTGAGGTGGCCCAACAGACCCGAAAAATCCTGTCTGCCTGTGAGAAGAATCCACAGATGCCTACCAGCT
 CAATTATGACATGCACAACCCCTTTGACATTTGTGCTGCATCATATCGGCCATCTACCGTGAAAGCCA
 GTAGAAAAGTGTCCACTCAGTGGGGCTGCTATCCCCTGAGTTCAAAGGTCAAATCTGCAGGGTCACCA
 CAGTGACAGAGATTGGCAAAGATGTGATTGGTTTAAGGATCAGTCCTCTGCAGTTTCGC

ACGCGTACGCGGCGGCTCGAGCAGAACTCATCTCAGAAGAGGATCTGGCAGCAAATGATATCCTGGATT
 ACAAGGATGACGACGATAAGGTTTAA

Protein Sequence: >RC214199 representing NM_001098398
 Red=Cloning site Green=Tags(s)

```
MLTKFETKSARVKGLSFHPKRPWILTSLHNGVIQLWDYRMCTLIDKFDEHDGPVRGIDFHKQQPLFVSSG
DDYKIKVWNYKLRRCLFTLLGHLDYIRTTFFHHEYWPILSASDDQTIIRVWNWQSRCTVCVLTGHNHYVMC
AQFHPTEDLVVSASLDQTVRVWDISGLRKKNLSPGAVESDVRGITGVDLFGTTDAVVKHVLGHRGVNW
AAFHPTMPLIVSGADDRQVKIWRMNEKAWVEDTCRGHYNNVSCAVFHPRQELILSNSEDKSIRVWDMSSK
RTGVQTFRRDHDRFVFLAAHPNLNLFAAGHDGGMIVFKLERERPAYAVHGNMLHYVKDRFLRQLDFNSSK
DVAVMQLRSGSKFPVFNMSYNPAENAVLLCTRASNLENSTYDLYTIPKADSQNPDAPEGKRSSGLTAVW
VARNRFAVLDRMHSLLIKNLKNEITKKVQVPCDEIFYAGTGNLLLRDADSITLFDVQQRKTLASVKISK
VKYVIWSADMSHVALLAKHEHSCPLPLTAIVICNRKLDALCNIHENIRVKSAGWDESGVFIYTTSNHIKY
AVTTGDHGIIRTLDLPIYVTRVKGNVYCLDRECRPRVLTIDPTEFKFKLALINRKYDEVLMHVRNAKLV
GQSI IAYLQKKGYPEVALHFVKDEKTRFSLALECGNIEIALEAAKALDDKNCWEKLEGEVALLQGNHQIVE
MCYQRTKNFDKLSFLYLITGNLEKLRKMMKIAEIRKDMSGHYQNALYLDVSEVRVILKNCGQKSLAYLT
AATHGLDEEAESLKETFDPKETIPDIDPNAKLLQPPAPIMPLDTNWPLLTVSKGFFEGTIASKGKGGAL
AADIDIDITVGTGEGWEDAELQLDEDGFVEATEGLGDDALGKGQEEGGWVDEEDLELPELDI SPGAAGG
AEDGFFVPPTKGTSPQIWCNNSQLPVDHILAGSFETAMRLLHDQVGVIFQGPYKQLFLQTYARGRTTYQ
ALPCLPSMYGYPNRNWKDALKNGVPAVGLKLNLDLIQRLQLCYQLTTVGKFEEAVEKFRSILLVPLLVV
DNKQEIIEAQQLLITICREYIVGLSVETERKKLPKETLEQQKRICEMAAFYTHSNLQPVHMILVLRALNL
FFKLKNFKTAATFARRLLELGPKEVAQQTRKILSACEKNPTDAYQLNYDMHNPFDICAAASYRPIYRGKP
VEKCLSGACYSPEFKGQICRVTTVTEIGKDVIGLRISPLQFR
```

TRTRPLEQKLISEEDLAANDILDYKDDDDKV

Chromatograms: https://cdn.origene.com/chromatograms/mg4120_d05.zip

Restriction Sites: SgfI-MluI

Cloning Scheme:



ACCN: NM_001098398

ORF Size: 3699 bp

OTI Disclaimer: Due to the inherent nature of this plasmid, standard methods to replicate additional amounts of DNA in E. coli are highly likely to result in mutations and/or rearrangements. Therefore, OriGene does not guarantee the capability to replicate this plasmid DNA. Additional amounts of DNA can be purchased from OriGene with batch-specific, full-sequence verification at a reduced cost. Please contact our customer care team at custsupport@origene.com or by calling 301.340.3188 option 3 for pricing and delivery.

The molecular sequence of this clone aligns with the gene accession number as a point of reference only. However, individual transcript sequences of the same gene can differ through naturally occurring variations (e.g. polymorphisms), each with its own valid existence. This clone is substantially in agreement with the reference, but a complete review of all prevailing variants is recommended prior to use. [More info](#)

OTI Annotation: This clone was engineered to express the complete ORF with an expression tag. Expression varies depending on the nature of the gene.

Components: The ORF clone is ion-exchange column purified and shipped in a 2D barcoded Matrix tube containing 10ug of transfection-ready, dried plasmid DNA (reconstitute with 100 ul of water).

Reconstitution Method:

1. Centrifuge at 5,000xg for 5min.
2. Carefully open the tube and add 100ul of sterile water to dissolve the DNA.
3. Close the tube and incubate for 10 minutes at room temperature.
4. Briefly vortex the tube and then do a quick spin (less than 5000xg) to concentrate the liquid at the bottom.
5. Store the suspended plasmid at -20°C. The DNA is stable for at least one year from date of shipping when stored at -20°C.

Note: Plasmids are not sterile. For experiments where strict sterility is required, filtration with 0.22um filter is required.

RefSeq: [NM_001098398.1](#), [NP_001091868.1](#)

RefSeq Size: 5666 bp

RefSeq ORF: 3702 bp

Locus ID: 1314

UniProt ID: [P53621](#)

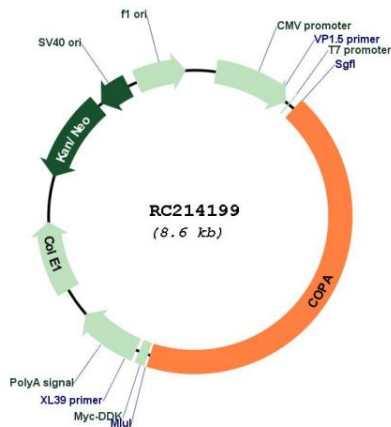
Cytogenetics: 1q23.2

MW: 139.1 kDa

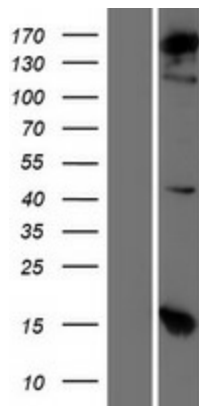
Gene Summary:

In eukaryotic cells, protein transport between the endoplasmic reticulum and Golgi compartments is mediated in part by non-clathrin-coated vesicular coat proteins (COPs). Seven coat proteins have been identified, and they represent subunits of a complex known as coatomer. The subunits are designated alpha-COP, beta-COP, beta-prime-COP, gamma-COP, delta-COP, epsilon-COP, and zeta-COP. The alpha-COP, encoded by COPA, shares high sequence similarity with RET1P, the alpha subunit of the coatomer complex in yeast. Also, the N-terminal 25 amino acids of alpha-COP encode the bioactive peptide, xenin, which stimulates exocrine pancreatic secretion and may act as a gastrointestinal hormone. Alternative splicing results in multiple splice forms encoding distinct isoforms. [provided by RefSeq, Jul 2008]

Product images:



Circular map for RC214199



Western blot validation of overexpression lysate (Cat# [LY420566]) using anti-DDK antibody (Cat# [TA50011-100]). Left: Cell lysates from untransfected HEK293T cells; Right: Cell lysates from HEK293T cells transfected with RC214199 using transfection reagent MegaTran 2.0 (Cat# [TT210002]).